



Complete College OCCCC

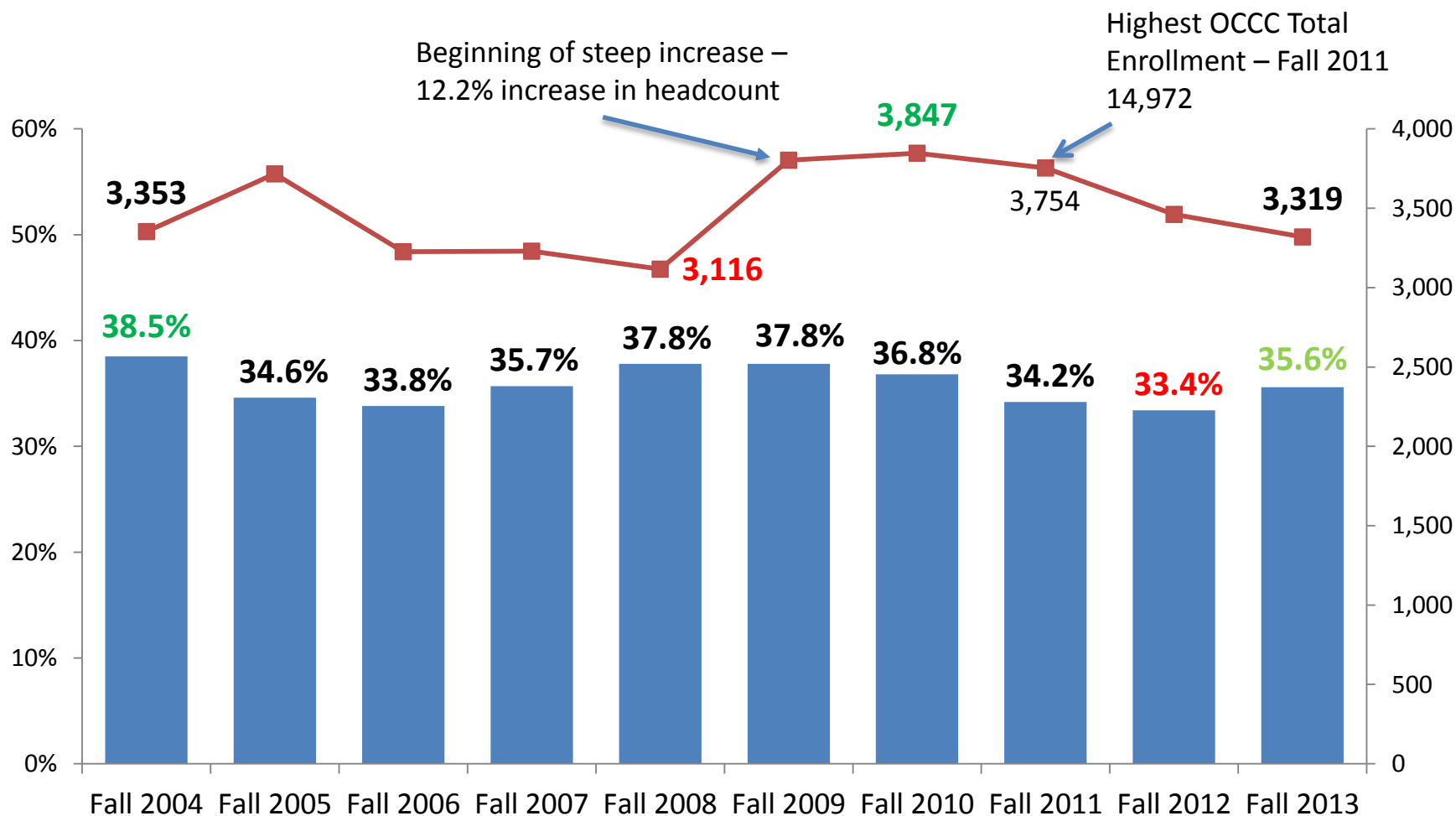
Fall 2013 AtD Cohort Retention

September 23, 2014

DEFINITION OF AtD COHORT AND RETENTION

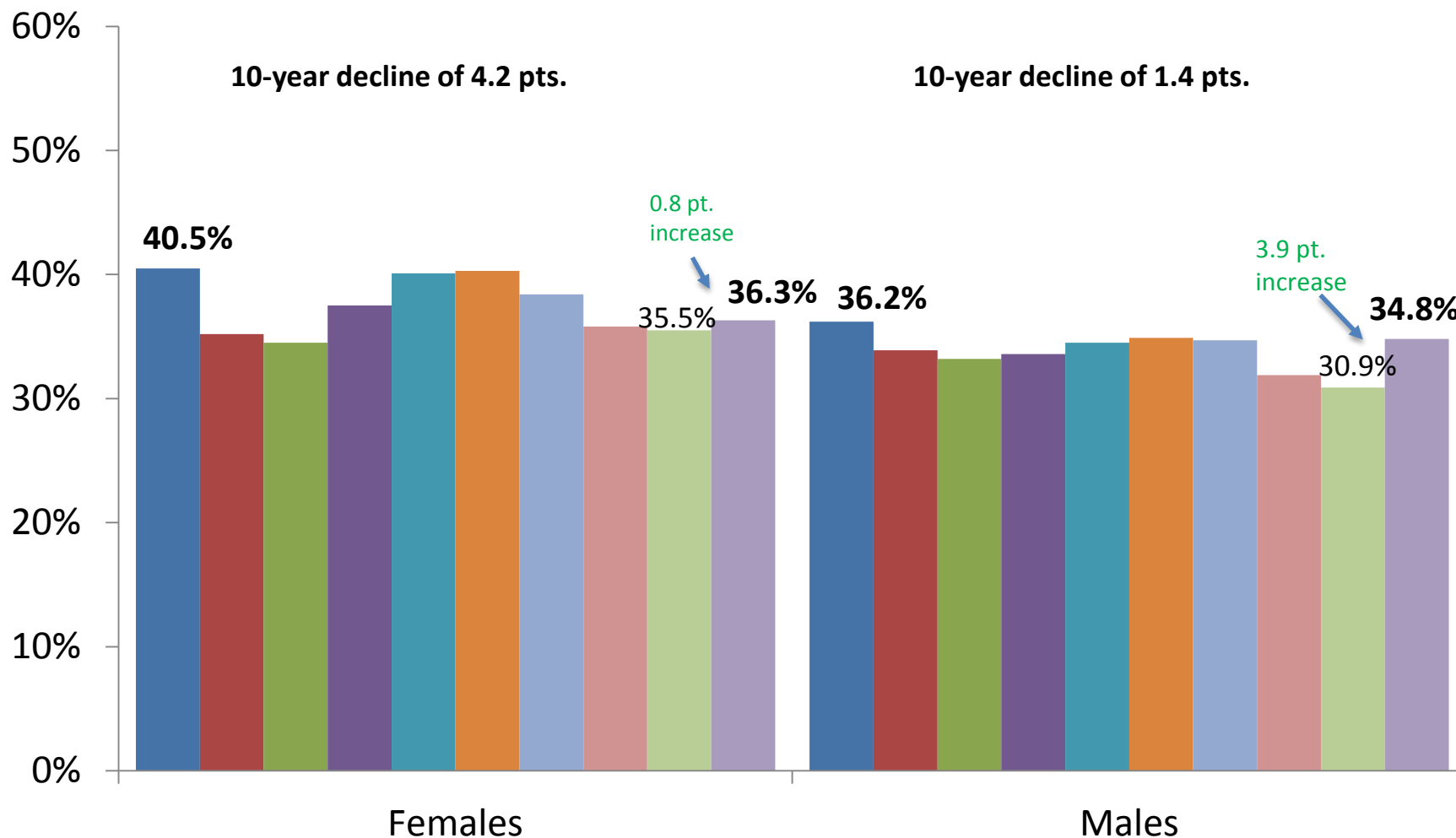
- AtD Cohort consists of students who are new to OCCC in the fall semester.
 - New to higher education (OCCC first college attended)
 - New Transfer (transferring credit hours from one or more other higher education institutions to OCCC for the first time)
- Retention – student from AtD Cohort enrolls in following fall semester

HEADCOUNT and RETENTION of AtD COHORTS



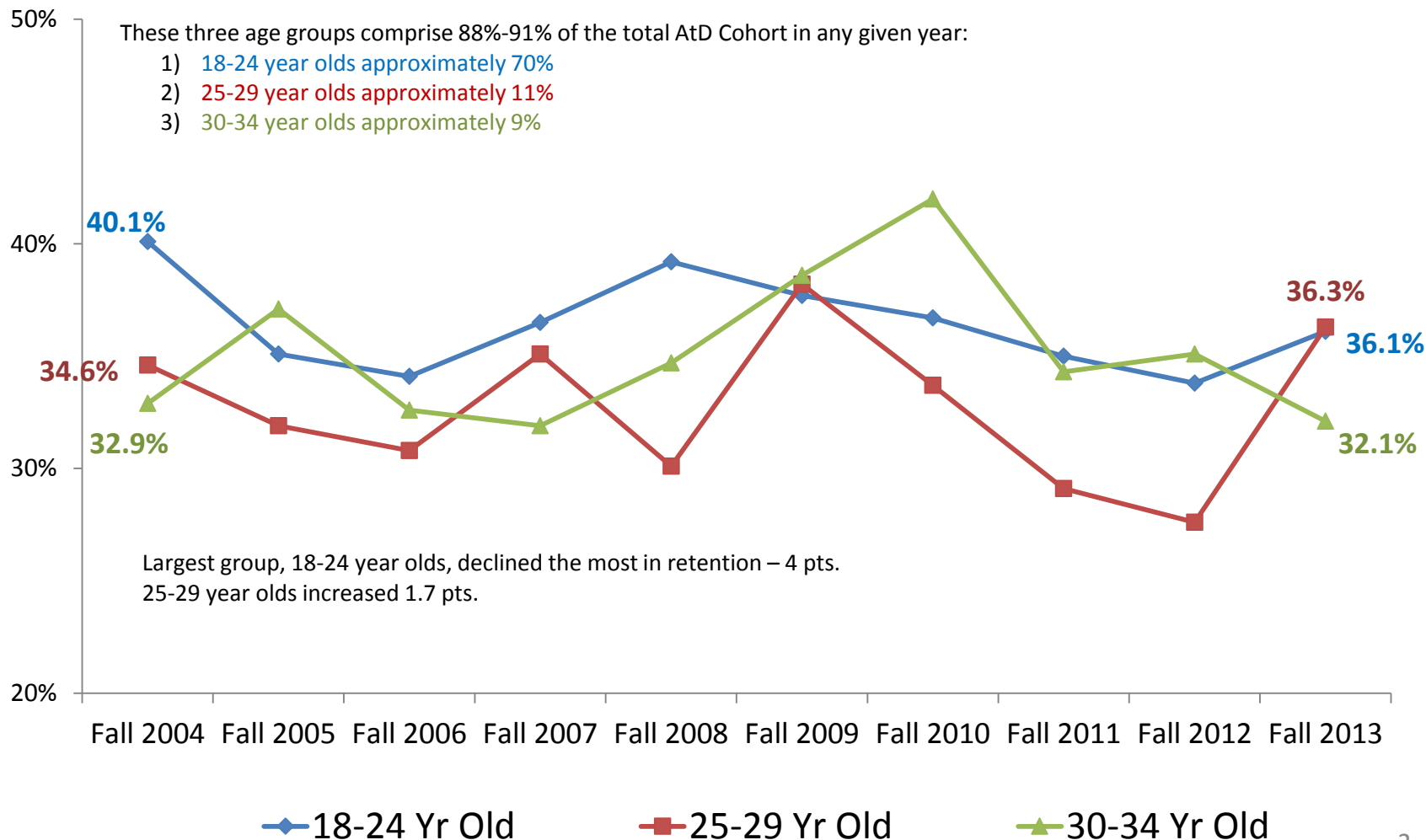
Retention of AtD COHORTS

Ten Year Look - GENDER



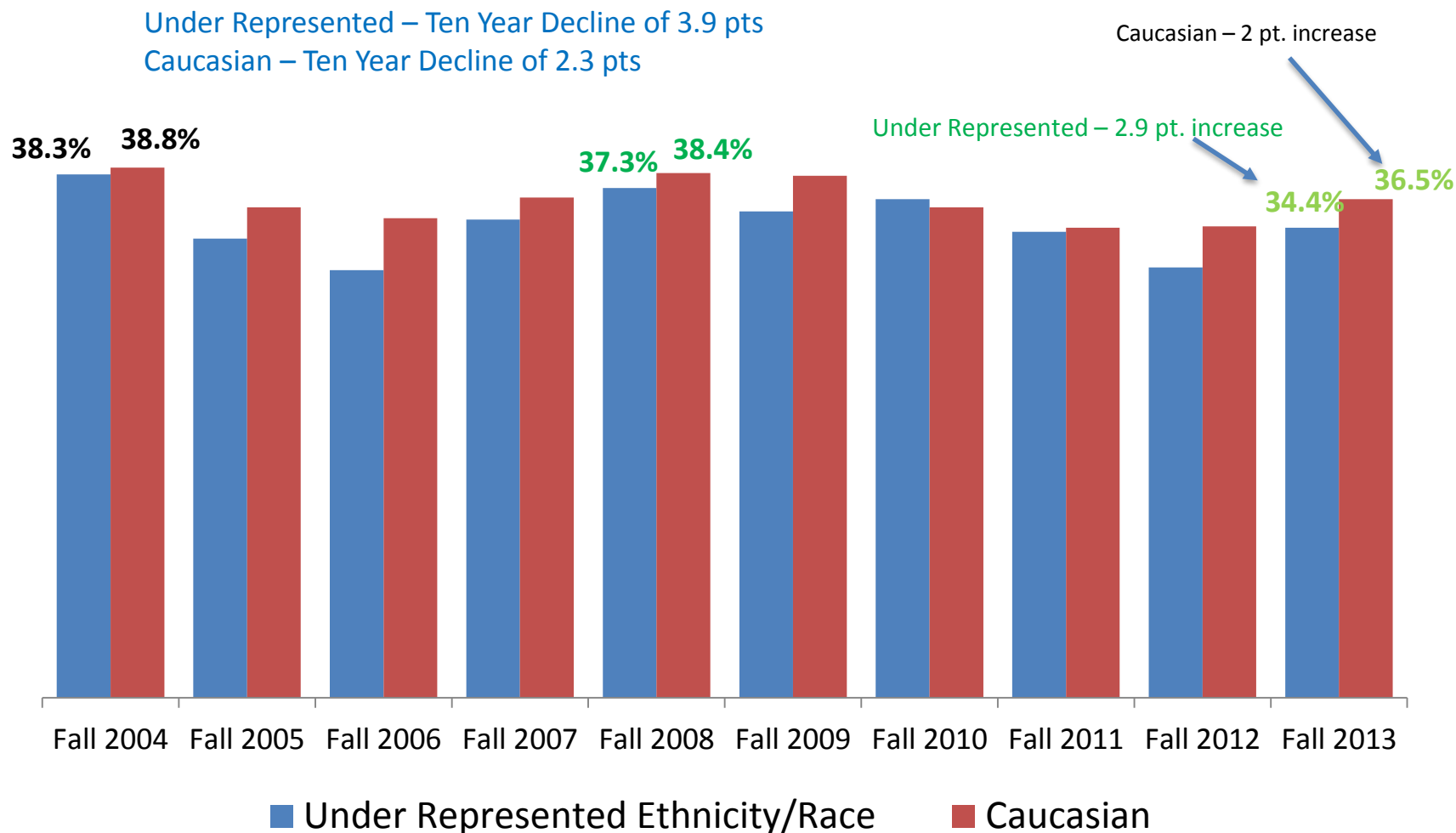
Retention of AtD COHORTS

Ten Year Look – AGE GROUP



Retention of AtD COHORTS

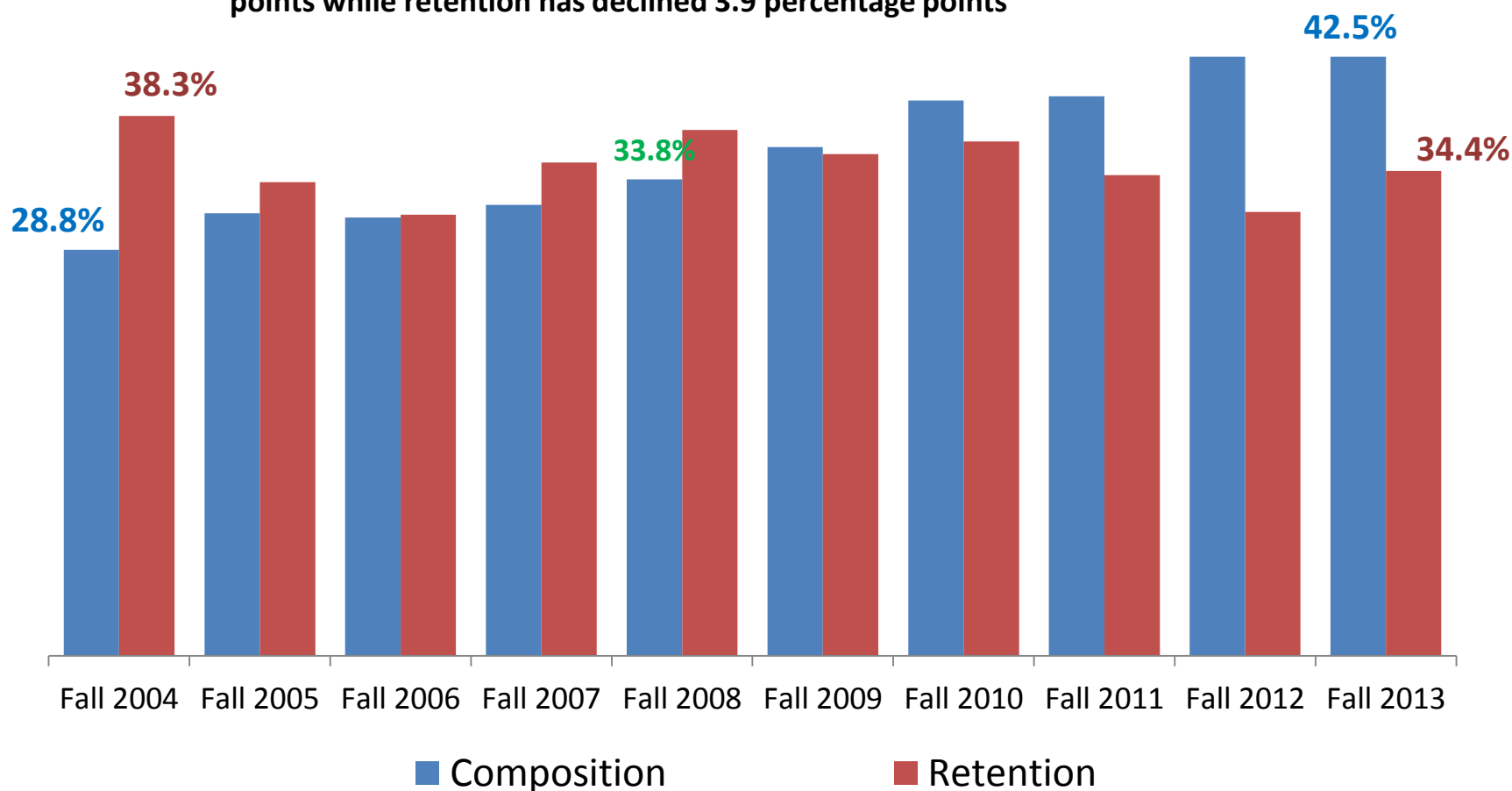
Ten Year Look – ETHNICITY/RACE



Composition & Retention of AtD COHORTS

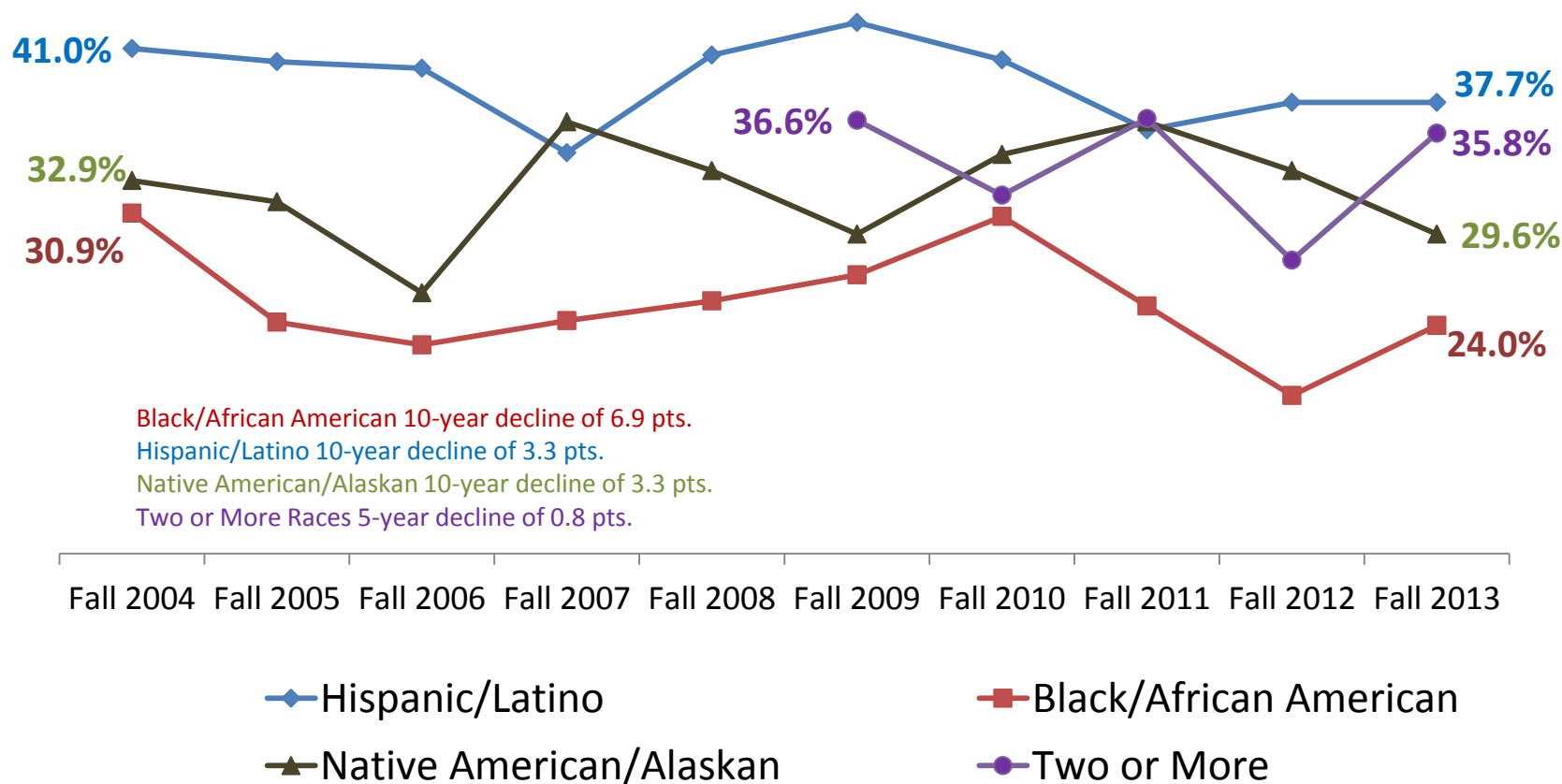
Ten Year Look – UNDER REPRESENTED ETHNICITY/RACE

Under represented percent of total Cohort has increased 13.7 percentage points while retention has declined 3.9 percentage points



Retention of AtD COHORTS

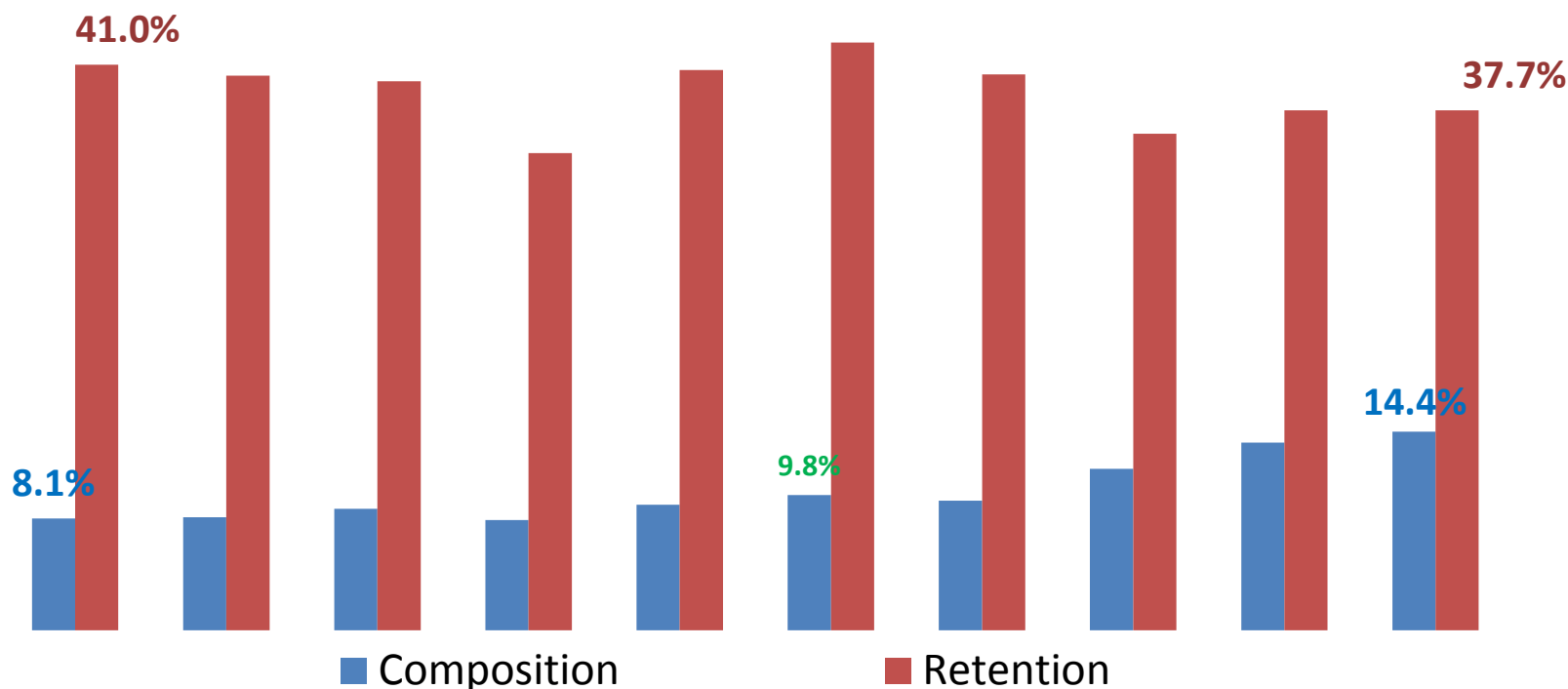
Ten Year Look – UNDER REPRESENTED ETHNICITY/RACE



Composition & Retention of AtD COHORTS

Ten Year Look – HISPANIC/LATINO

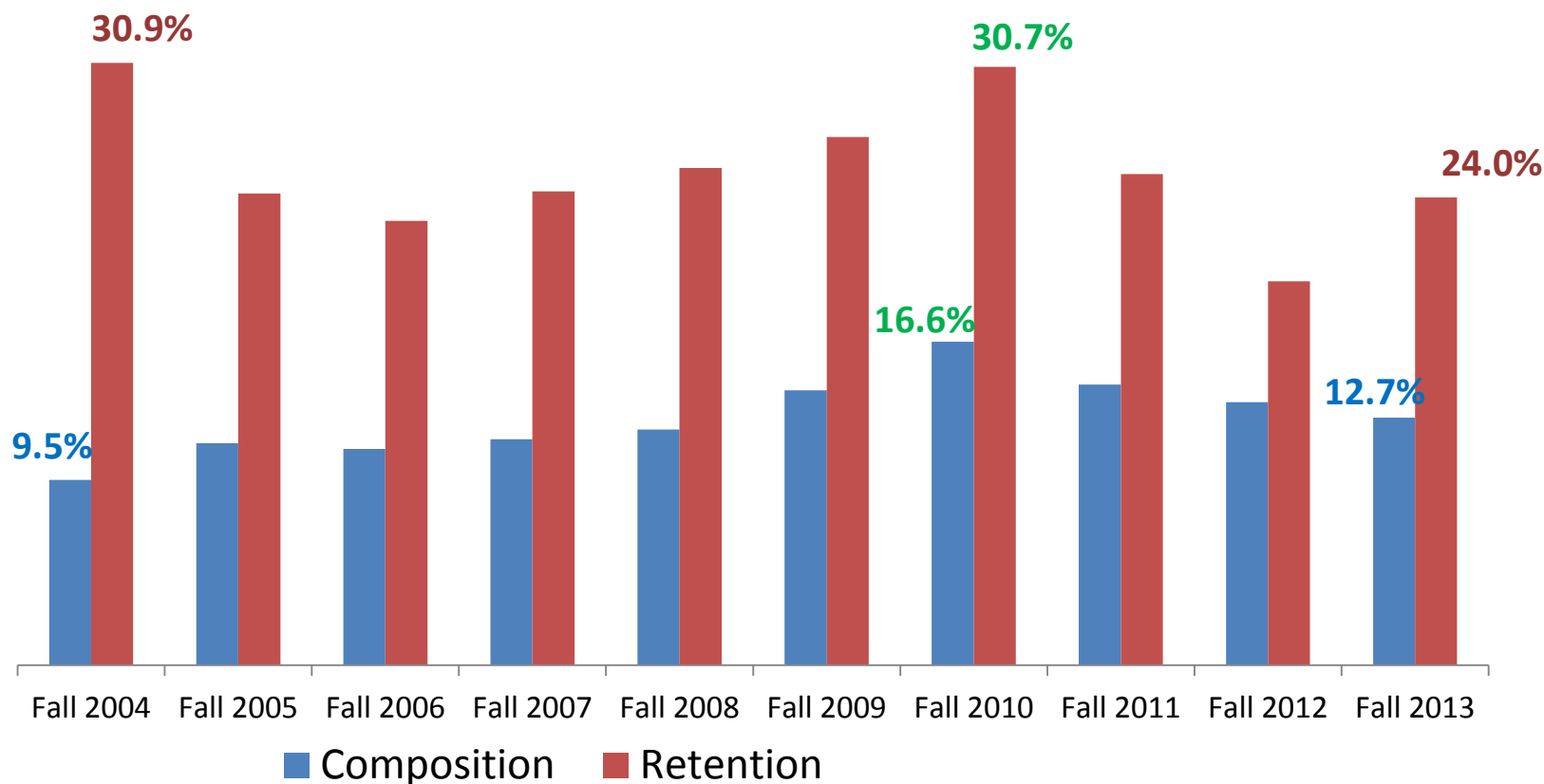
Percent of total Cohort has increased over 6 percentage points while retention has declined 3.3 percentage points.



Composition & Retention of AtD COHORTS

Ten Year Look – BLACK/AFRICAN AMERICAN

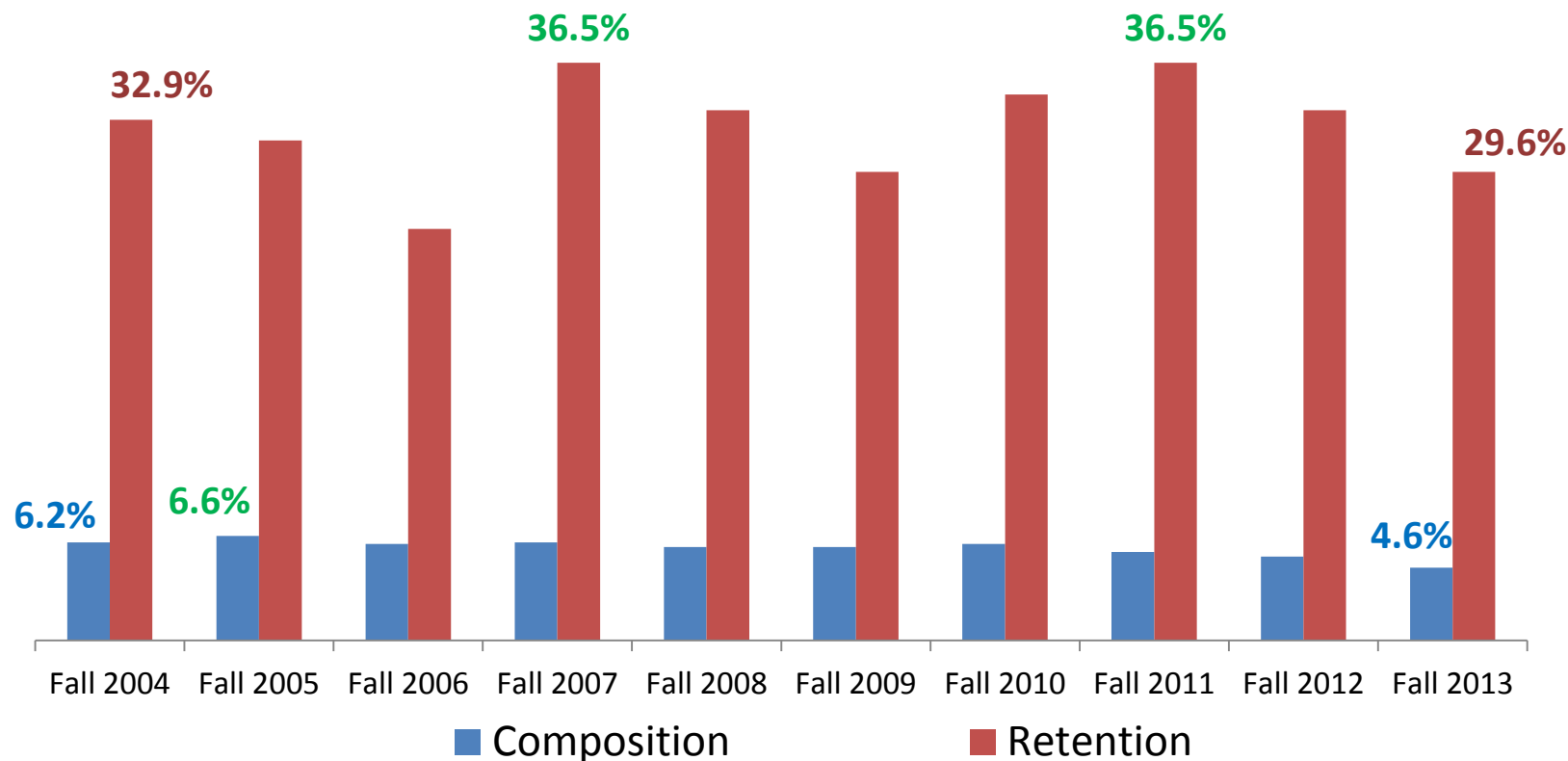
Percent of total Cohort has increased over 3 percentage points; however, this population has been in decline for 3 years. Retention has declined 6.9 percentage



Composition & Retention of AtD COHORTS

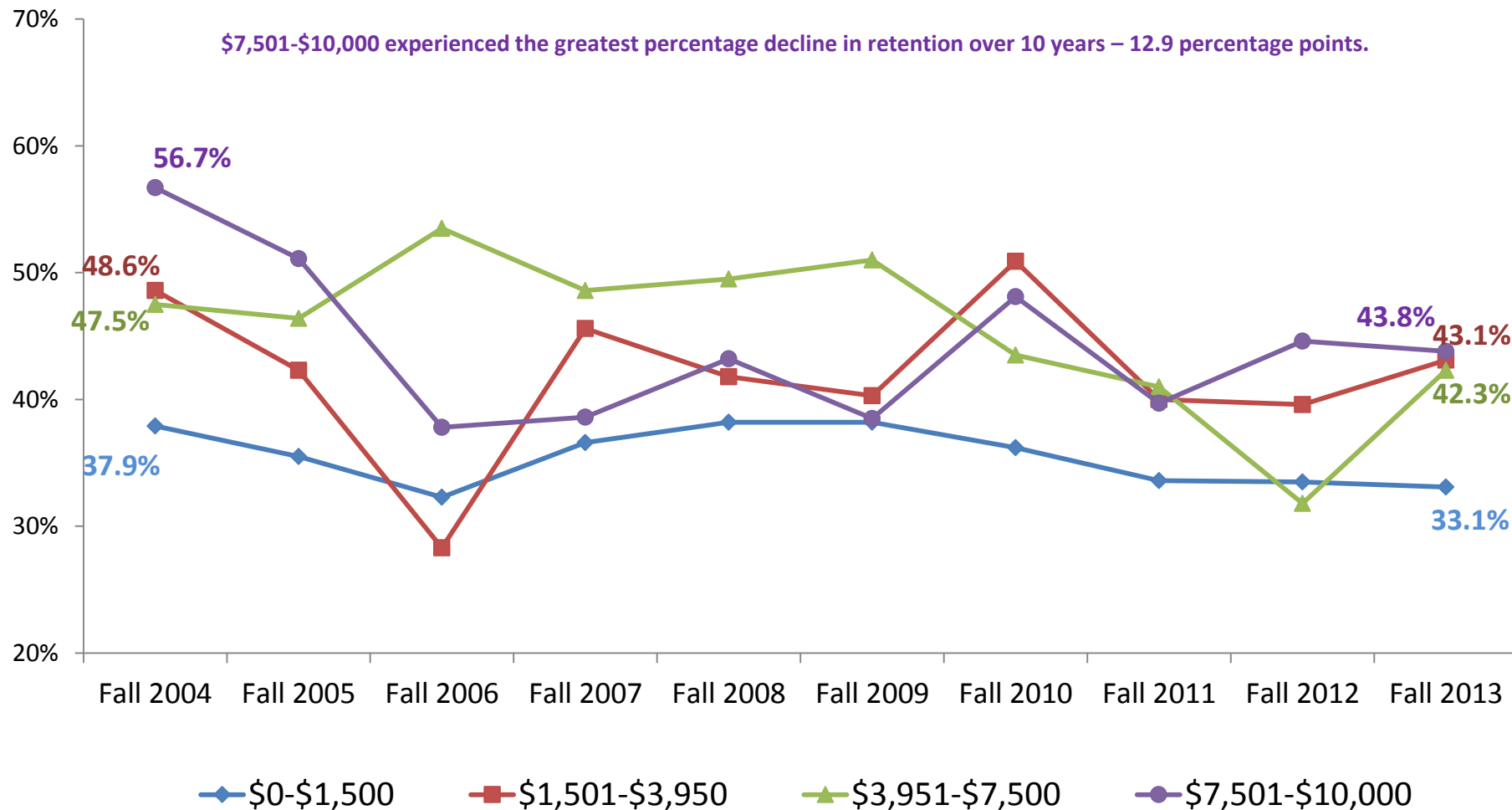
Ten Year Look – Native American/Alaskan

Percent of total Cohort has decreased 1.6 percentage points while retention has also declined 3.3 percentage points.



Retention of AtD COHORTS

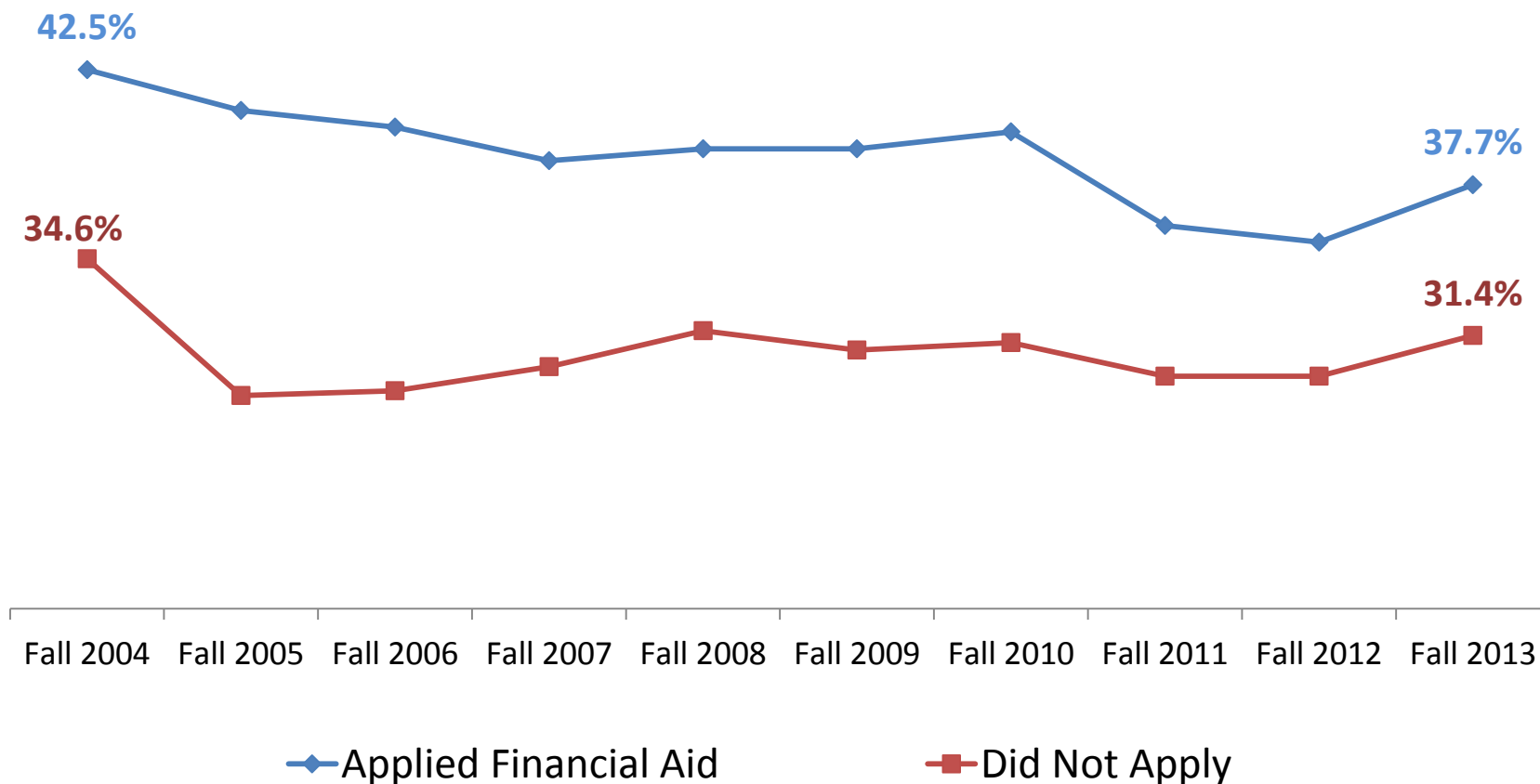
Ten Year Look – EFC GROUPS



Retention of AtD COHORTS

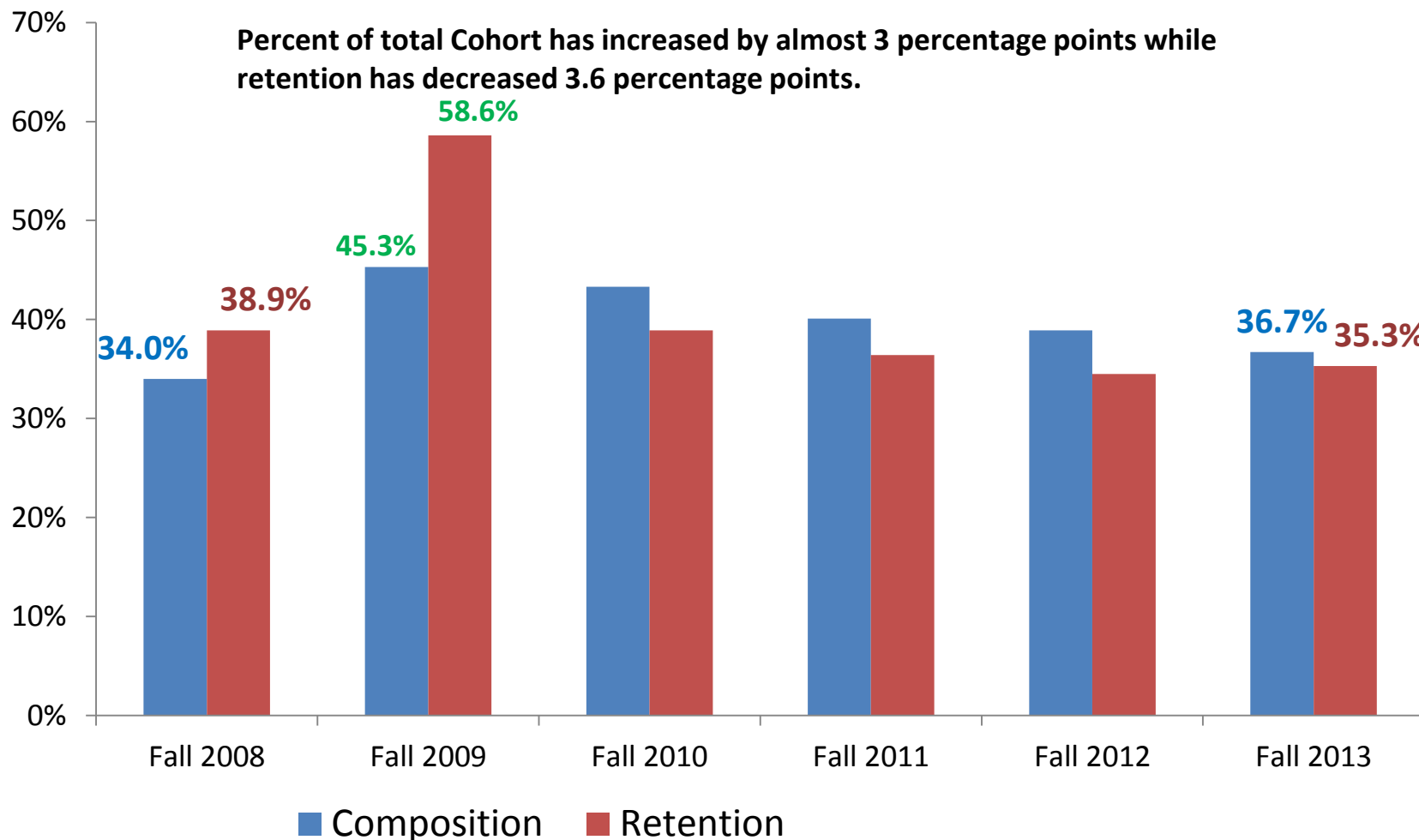
Ten Year Look – Applied FinAid vs. Not Applied

Higher percentage point decline in those who did apply for Financial Aid – 4.8 vs. 3.2 pts.



Composition & Retention of AtD COHORTS

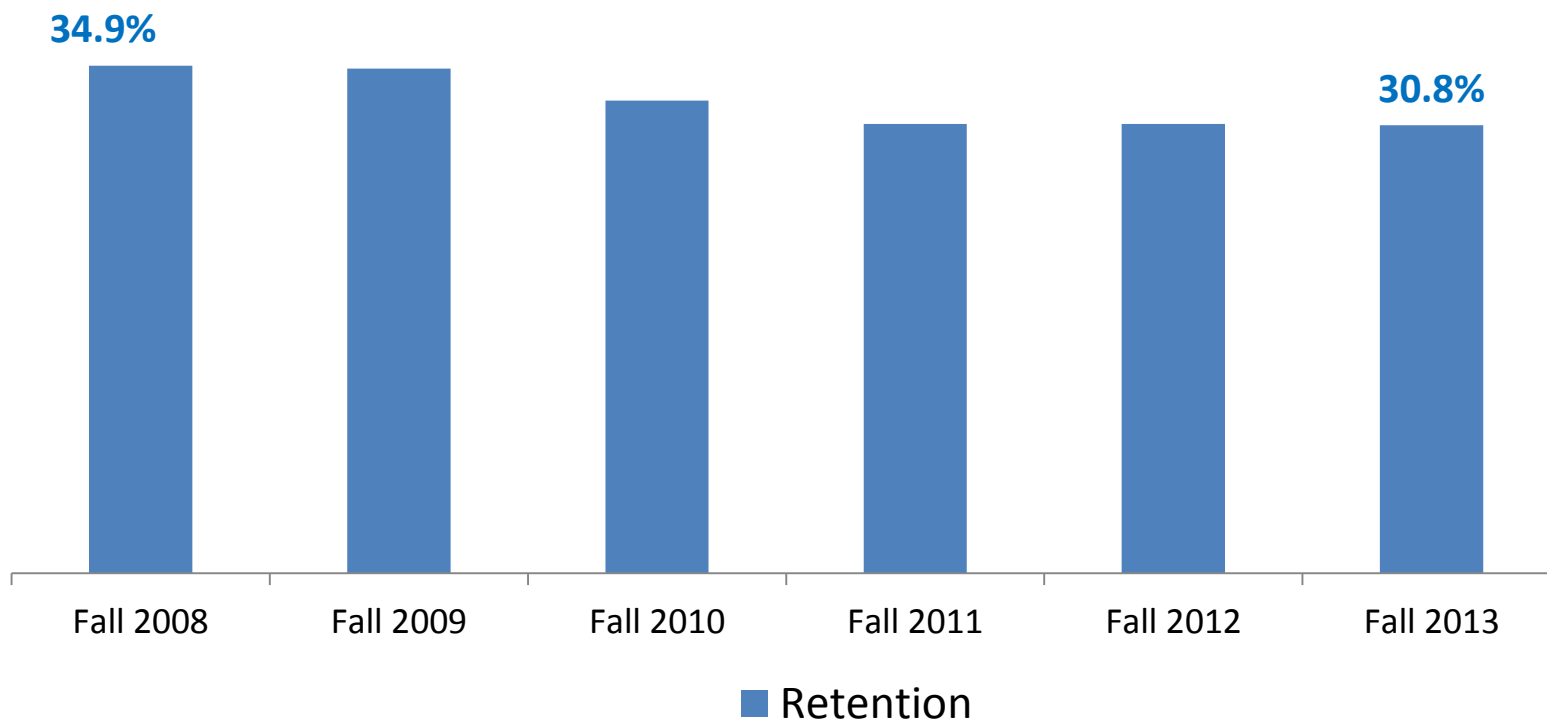
Six Year Look – ENROLLED 0-LEVEL MATH



Retention of AtD COHORTS

Six Year Look – ENROLLED 0-LEVEL ENGLISH*

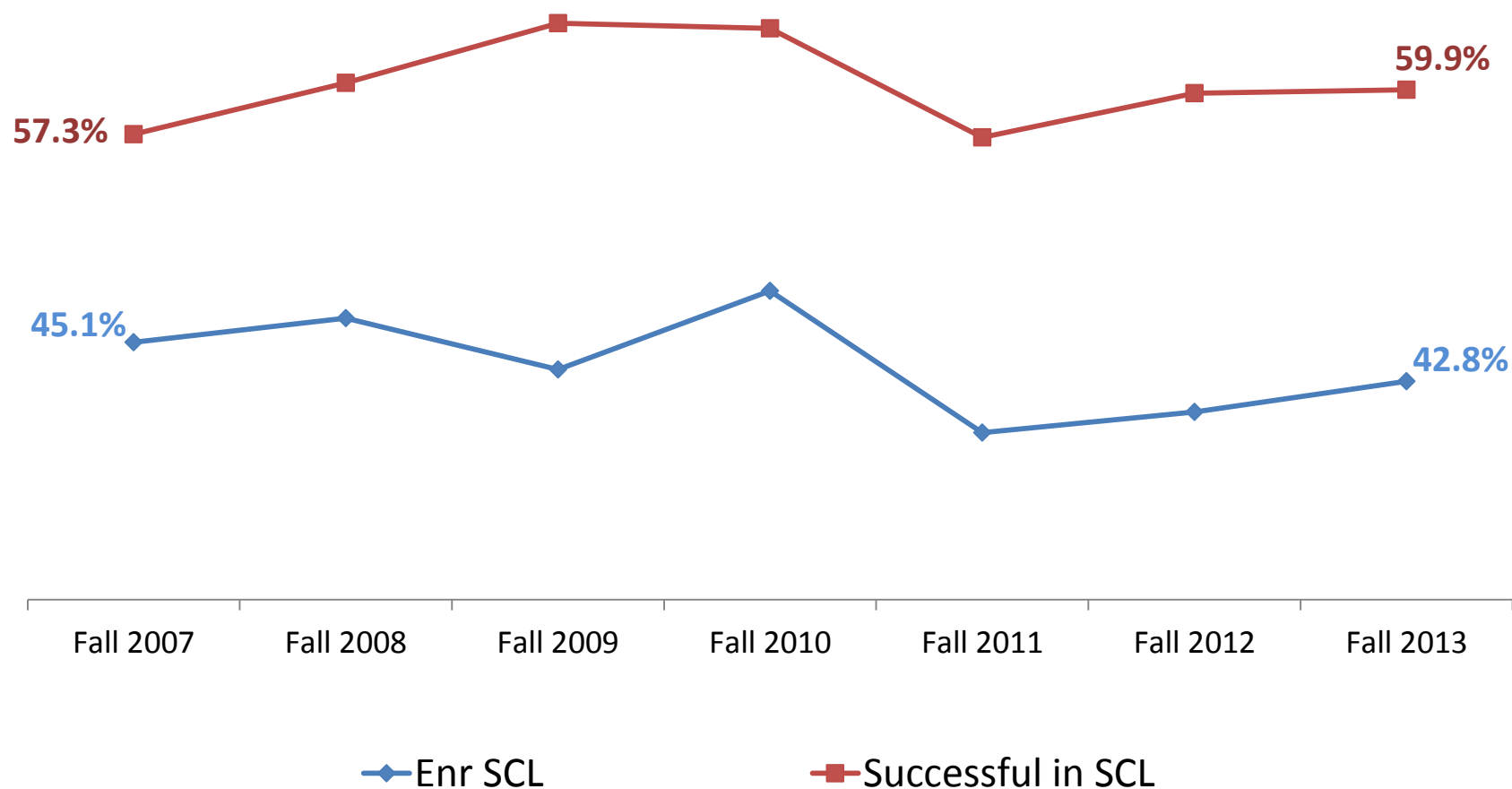
Percent of total Cohort has remained basically flat and retention has



* 0-Level Reading & Writing were combined for Falls 2008 to 2012 and then compared with 0-Level English in Fall 2013

Retention of AtD COHORTS

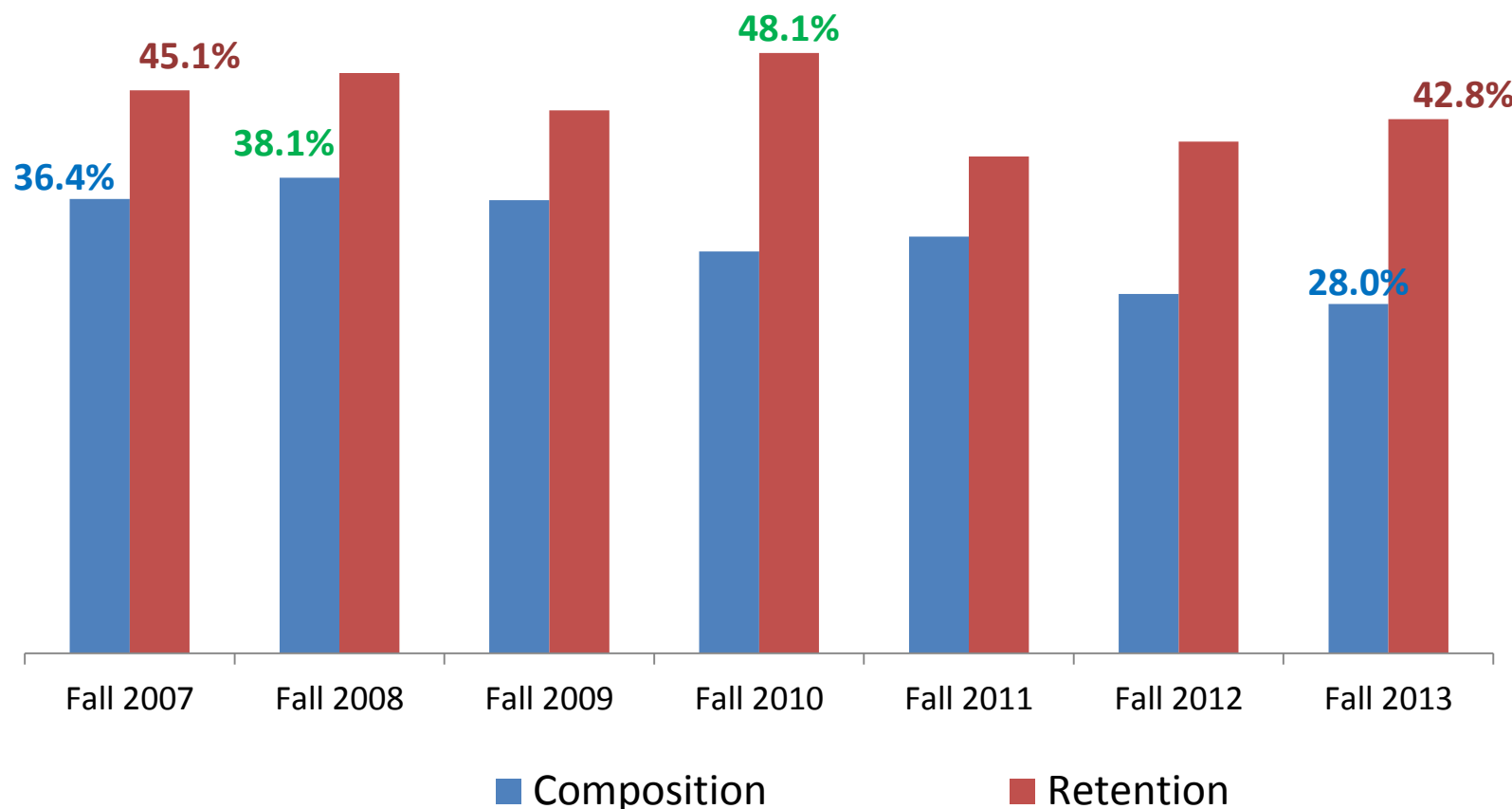
Seven Year Look – Enrolled in SCL & Successful



Composition & Retention of AtD COHORTS

Seven Year Look – ENROLLED SCL

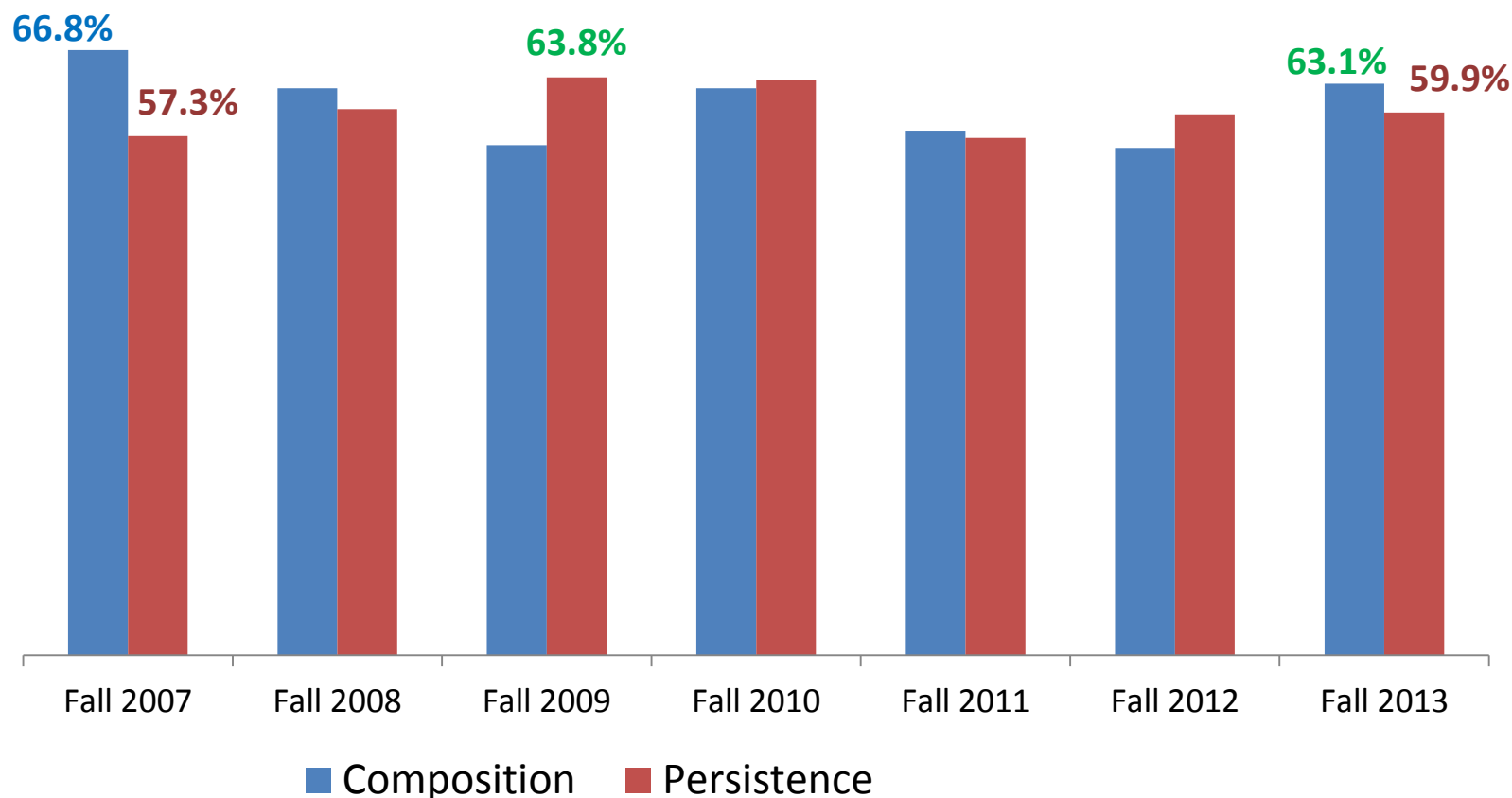
Percent of total Cohort has declined over 8 percentage points and retention has declined 2.3 percentage points.



Composition & Persistence of AtD COHORTS

Seven Year Look – SUCCESSFUL IN SCL

Percent of Cohort enrolled in SCL who were successful has decreased 3.7 percentage points while retention has increased 2.6 percentage points.



Retention of Fall 2013 AtD Cohort

Fall 2013 Retention Rates that increased more than 1 percentage point
From the Overall Retention Rate of 35.6%

17 Year Old & Under – 51.3%	Academic Standing on Notice– 41.7% *
45-49 Year Old – 36.7%	High School Diploma – 36.7%
50-54 Year Old – 42.4% *	Did Not Graduate High School – 37.5%
Asian – 51.3%	Successful in SCL in Fall or Spring – 62.7% *
Hispanic/Latino – 37.7%	Enrolled any of the 5 gateway courses – 39.1% to 51.0%
Full Time – 45.7%	Successful any of the 5 gateway courses – 53.0% to 68.1%
Applied for Financial Aid – 37.7%	Enrolled in 3 or More Zero-Level Course – 48.1%
All EFC Groups Except \$0-\$1,500 – 42.3% to 50.4% *	OKC-Go! – 44.8% *
Academic Standing Good – 36.6%*	New Students – 40.1% *

Green text indicates 3 or more percentage point increase from Overall retention

* Indicates an increase for 2 or more consecutive years

Retention of Fall 2013 AtD Cohort

Fall 2013 persistence rates that declined more than 1 percentage point from the overall retention rate of 35.6%

30-34 Year Old – 32.1%	Did Not Apply for Financial Aid – 31.4%
35-39 Year Old – 32.6%	GED – 27.7%
40-44 Year Old – 25.0%	No High School Credential – 29.5%
Black/African American – 24.0%	Academic Standing Probation – 31.7%
Native American/Alaskan – 29.6% *	Academic Standing Suspension – 23.1%
Part-time – 27.9%	Enrolled in two 0-Level Courses – 31.1% *
New Transfer – 28.5%	Enrolled in 0-Level English – 30.8%

Red text indicates 3 or more percentage point decrease from Overall retention

* Indicates a decline for 2 or more consecutive years

Look What We Did!

NOW IS
POWER

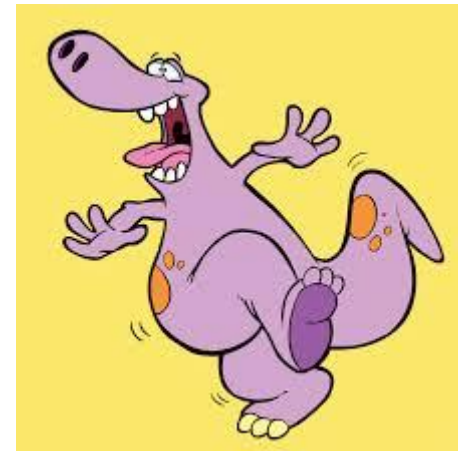
WE DID IT!!! WE DID IT!!! WE DID IT!!!



Just
sitting here
on the
corner of
AweSome
and
Bombdiggity



Persistence increased 1.1 percentage points!
Retention is up 2.2 percentage points!



We turned a 3 year
trend into the
beginning of an
trend!!

★ ★ LEADER COLLEGE ★ ★

