

Complete College OCCC AtD Cohort Overview

Meeting One

September 19th, 2012

Office of Institutional Effectiveness

Email: joyce.e.morgan-dees@occc.edu



NOW IS 
POWER

What We'll Cover

❑ Composition of Fall 2012 AtD Cohort

AtD Cohort includes all students who enter OCCC for the first-time in the fall semester. (New to higher education and new transfer to OCCC)

❑ Retention of Fall 2011 AtD Cohort

Retention is defined as a student in Fall AtD Cohort attending one or more classes in the following Fall. (Fall 2011 to Fall 2012)



NOW IS  POWER

Fall 2012 AtD Cohort Composition

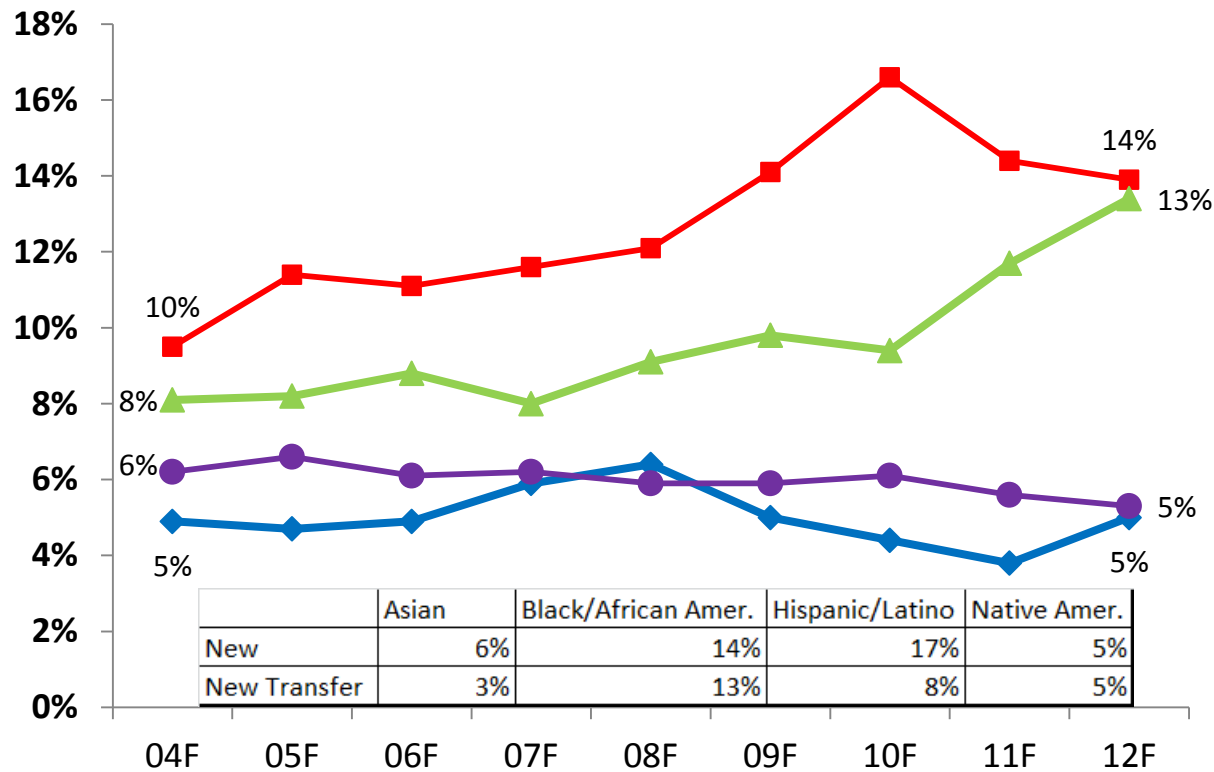
Gender



NOW IS
POWER

Fall 2012 AtD Cohort Composition

Ethnicity/Race



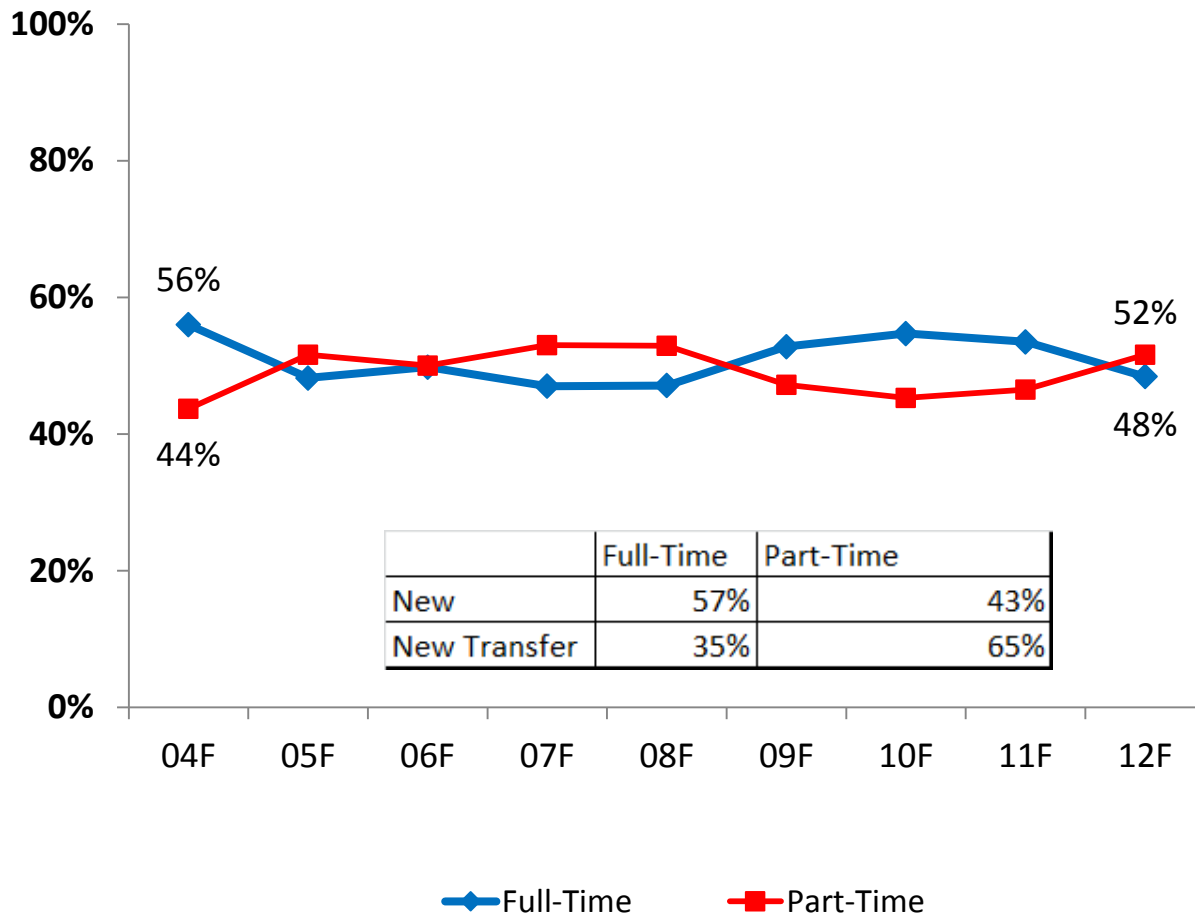
◆ Asian
 ■ Black/African American
 ▲ Hispanic/Latino
 ● Native American/Alaskan



**NOW IS
POWER**

Fall 2012 AtD Cohort Composition

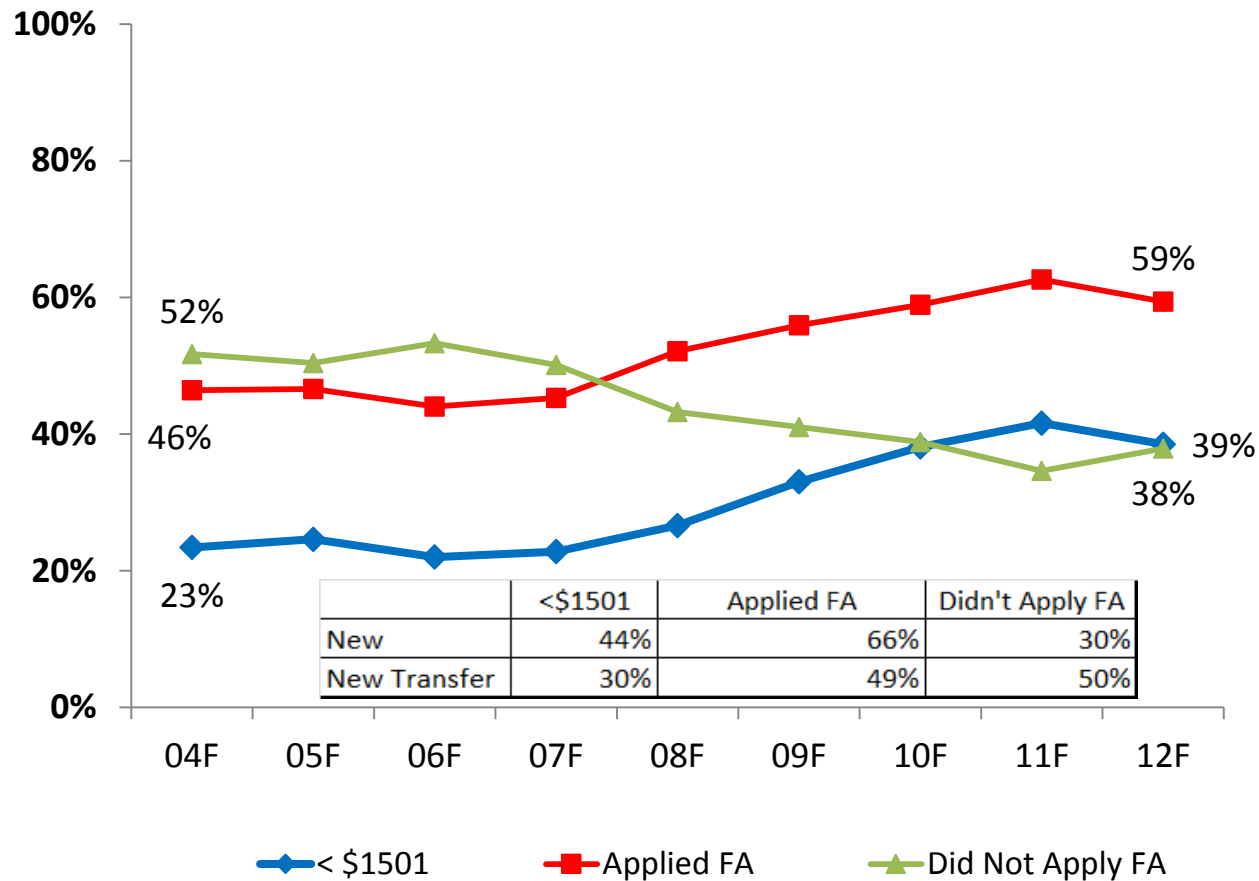
Course Load



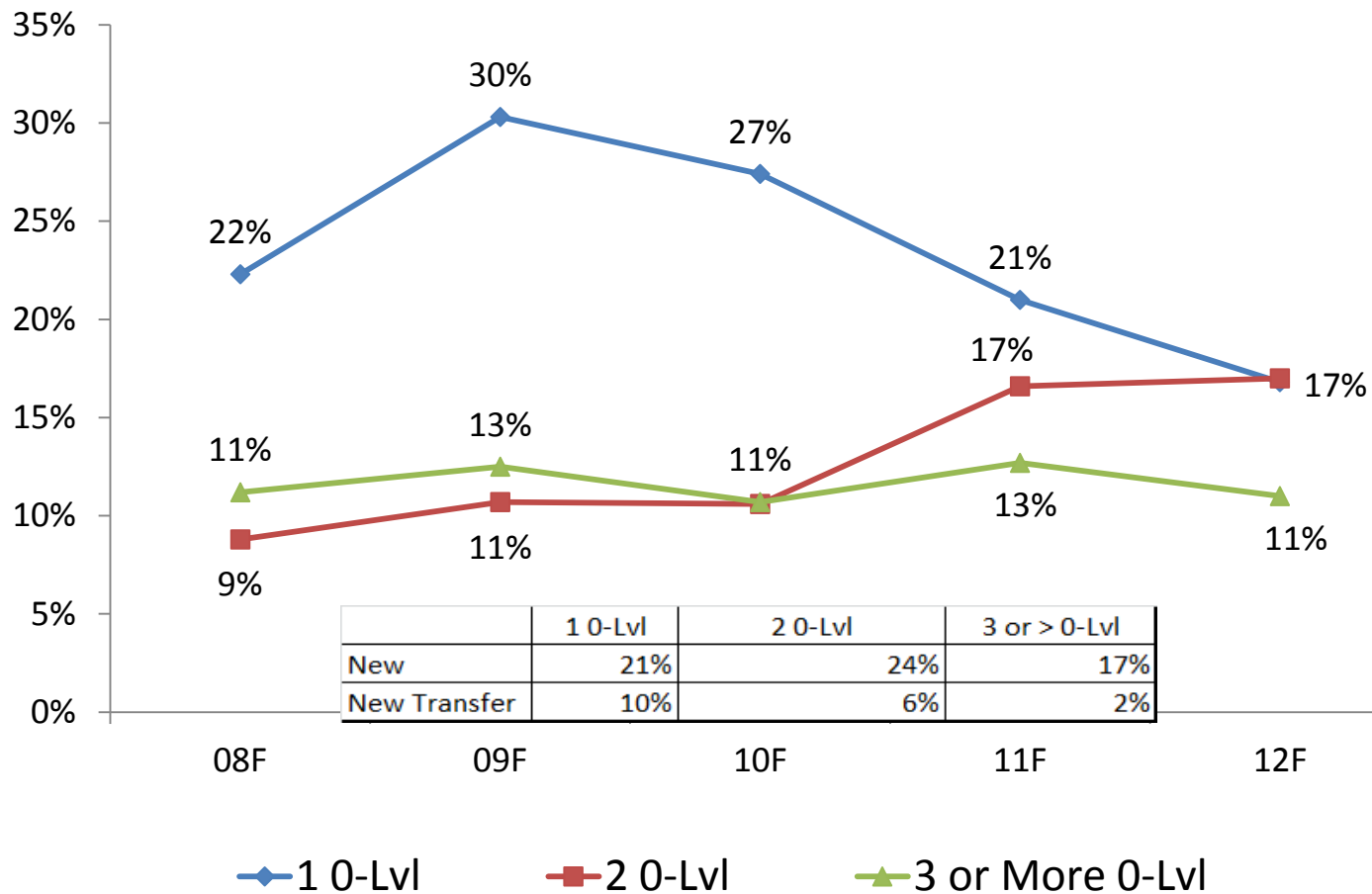
NOW IS  POWER

Fall 2012 AtD Cohort Composition

Financial Aid (EFC)

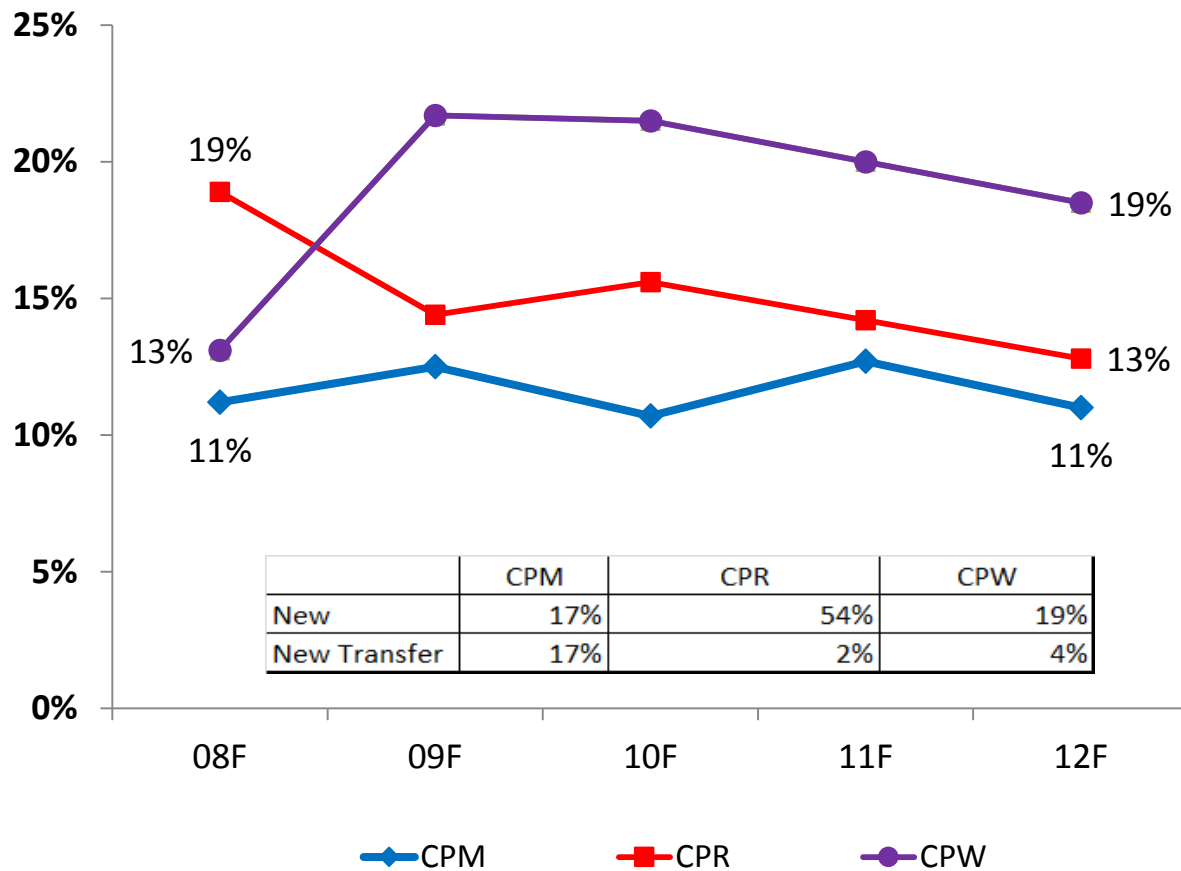


Fall 2012 AtD Cohort Composition Enrolled in 0-Level Courses



NOW IS
POWER

Fall 2012 AtD Cohort Composition Enrolled in College Prep Courses

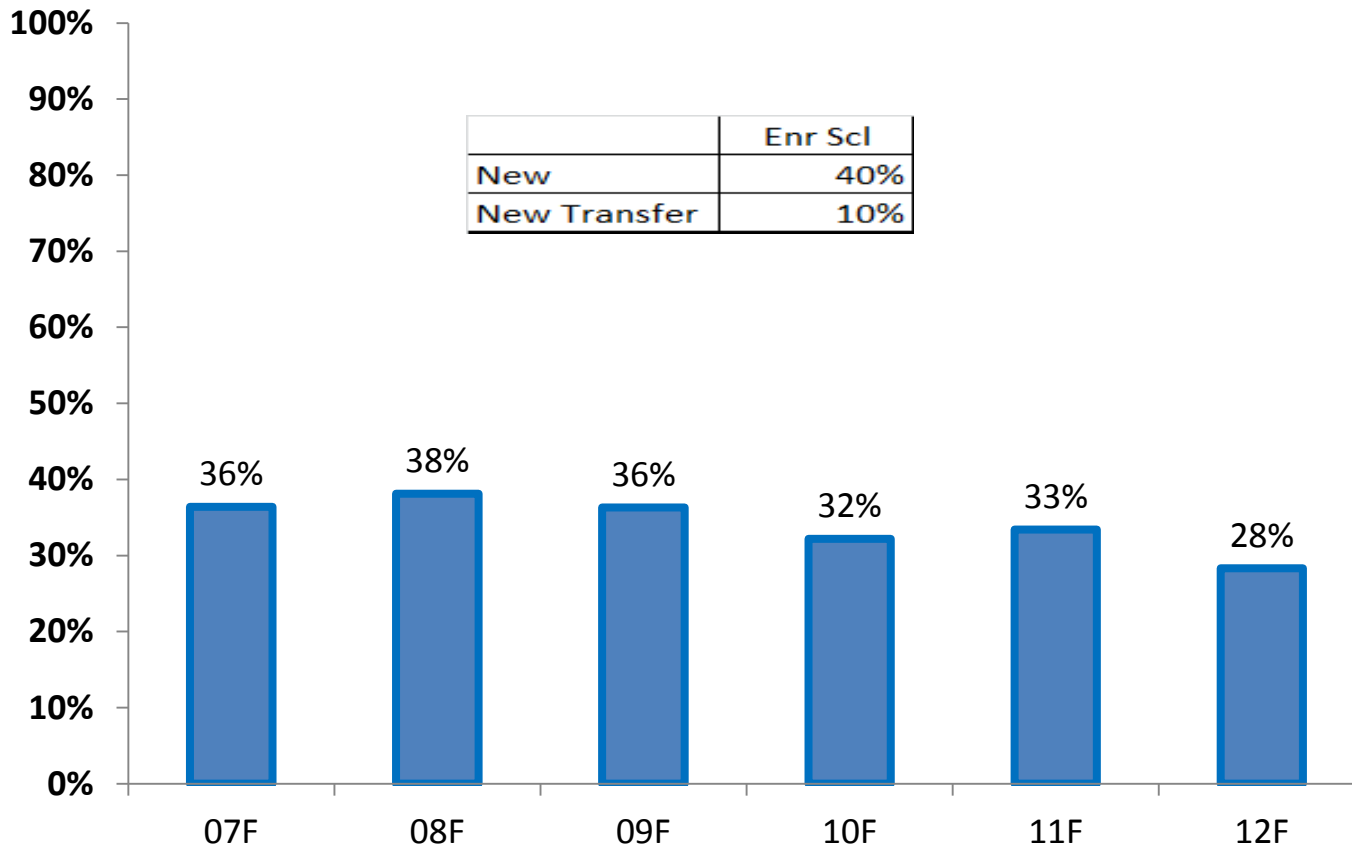


	CPM	CPR	CPW
New	17%	54%	19%
New Transfer	17%	2%	4%



**NOW IS
POWER**

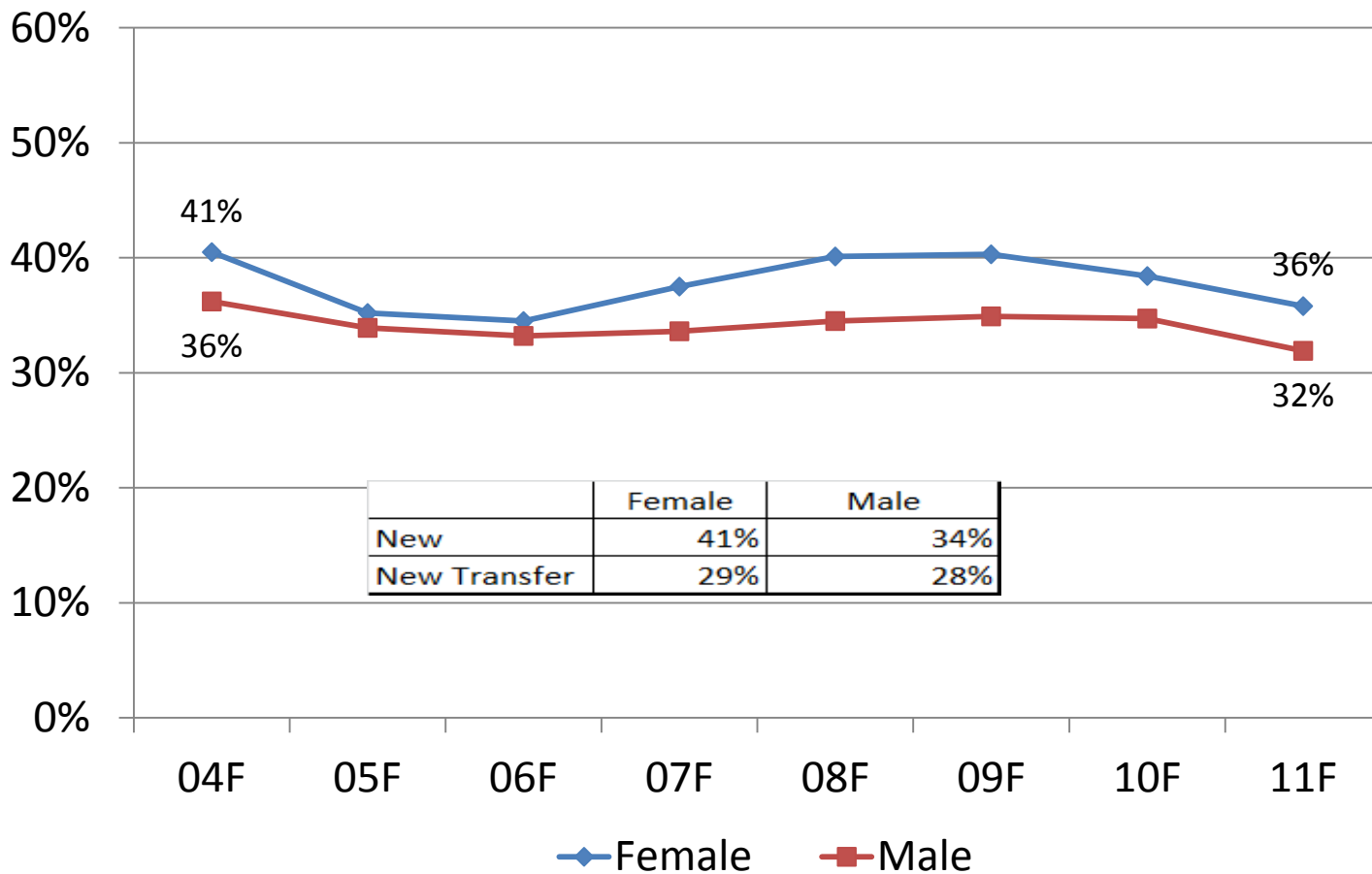
Fall 2012 AtD Cohort Composition Enrolled in SCL



NOW IS  POWER

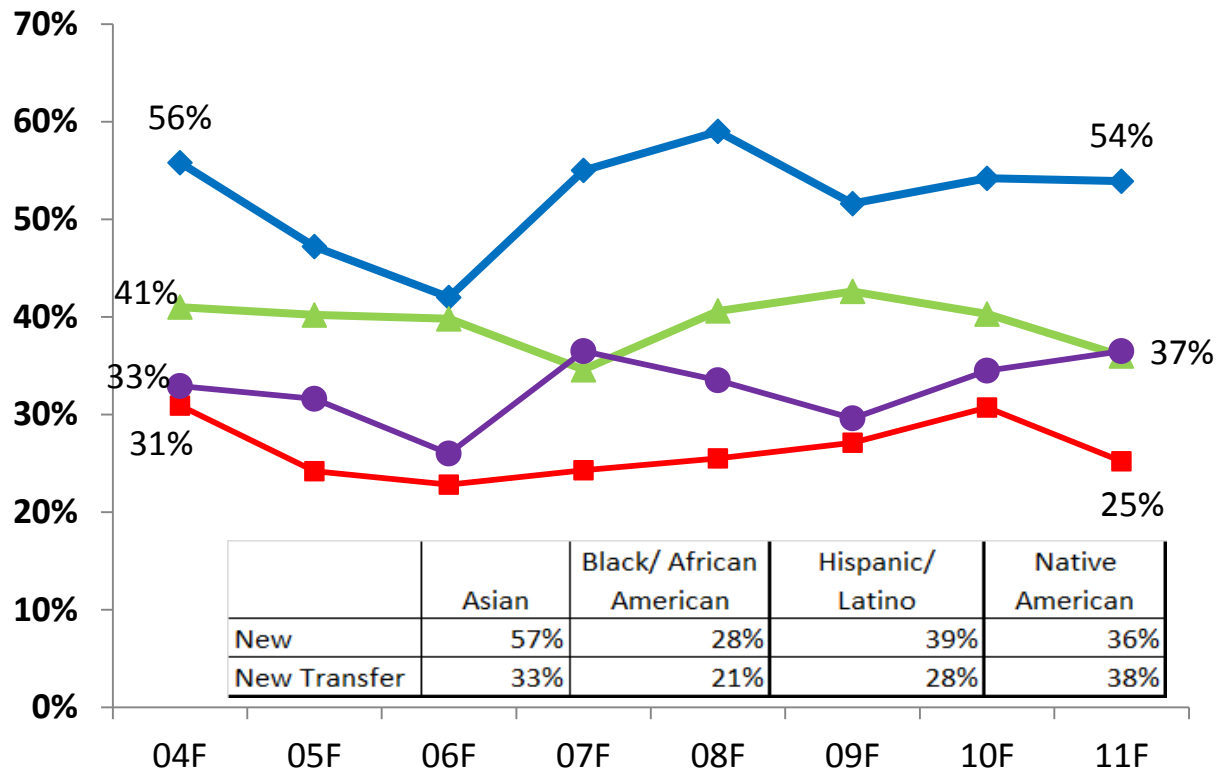
Fall 2012 AtD Cohort Retention

Gender



NOW IS
POWER

Fall 2012 AtD Cohort Retention Ethnicity/Race

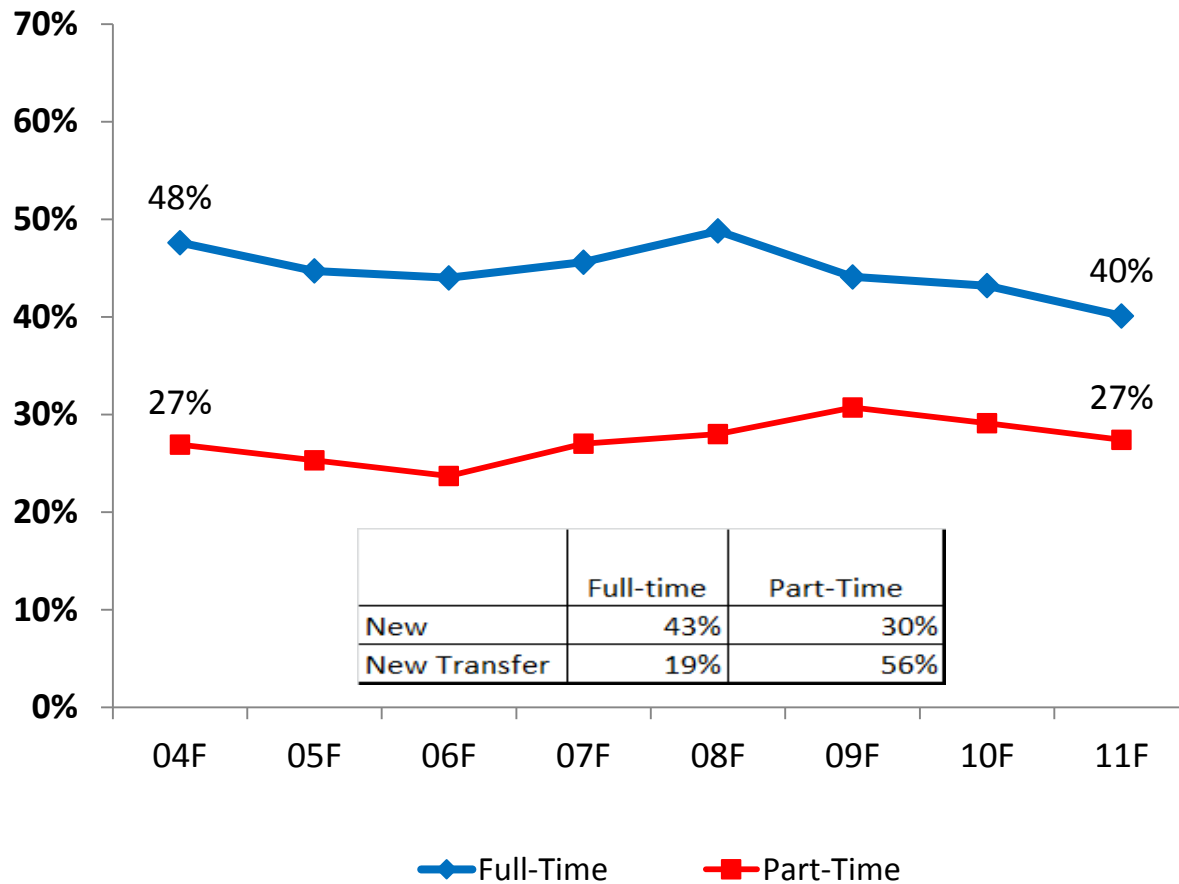


◆ Asian
 ■ Black/African American
 ▲ Hispanic/Latino
 ● Native American/Alaskan



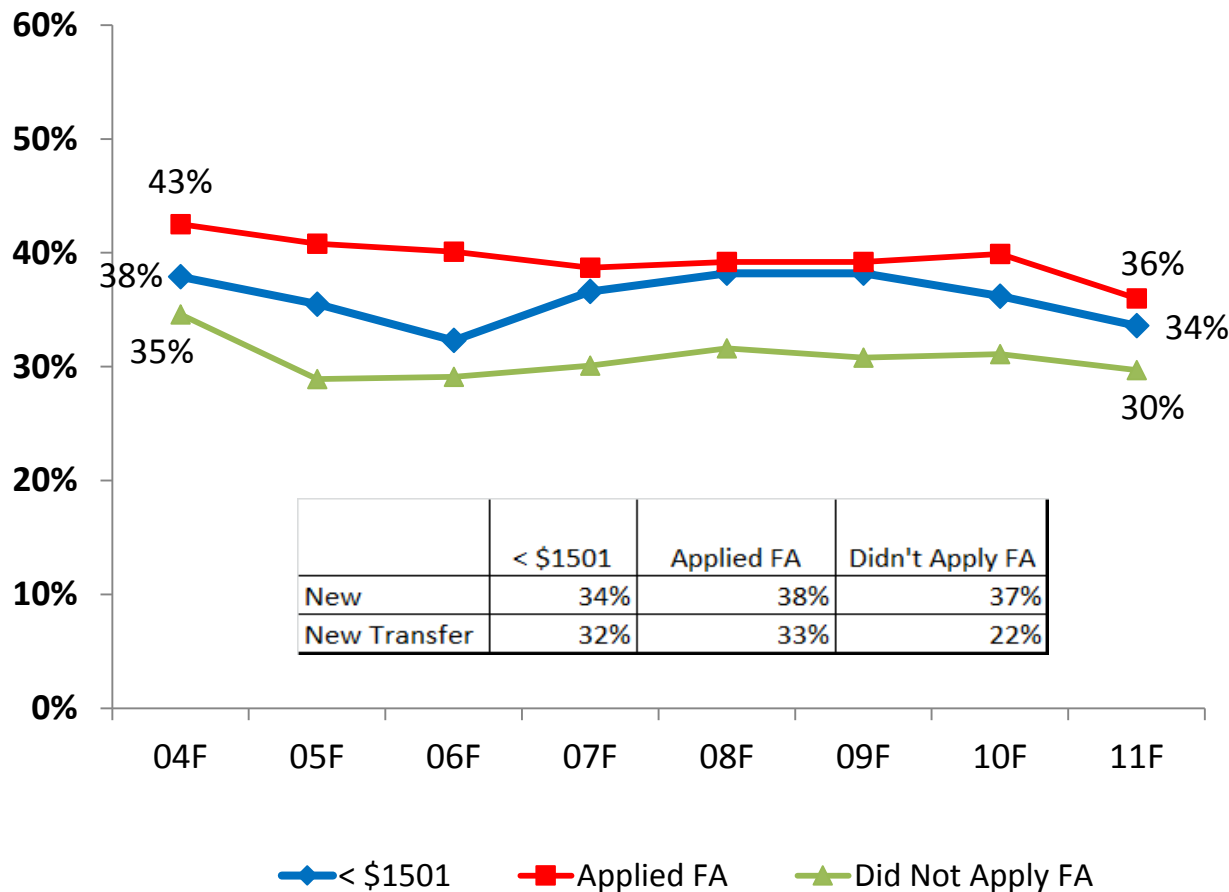
**NOW IS
POWER**

Fall 2012 AtD Cohort Retention Course Load



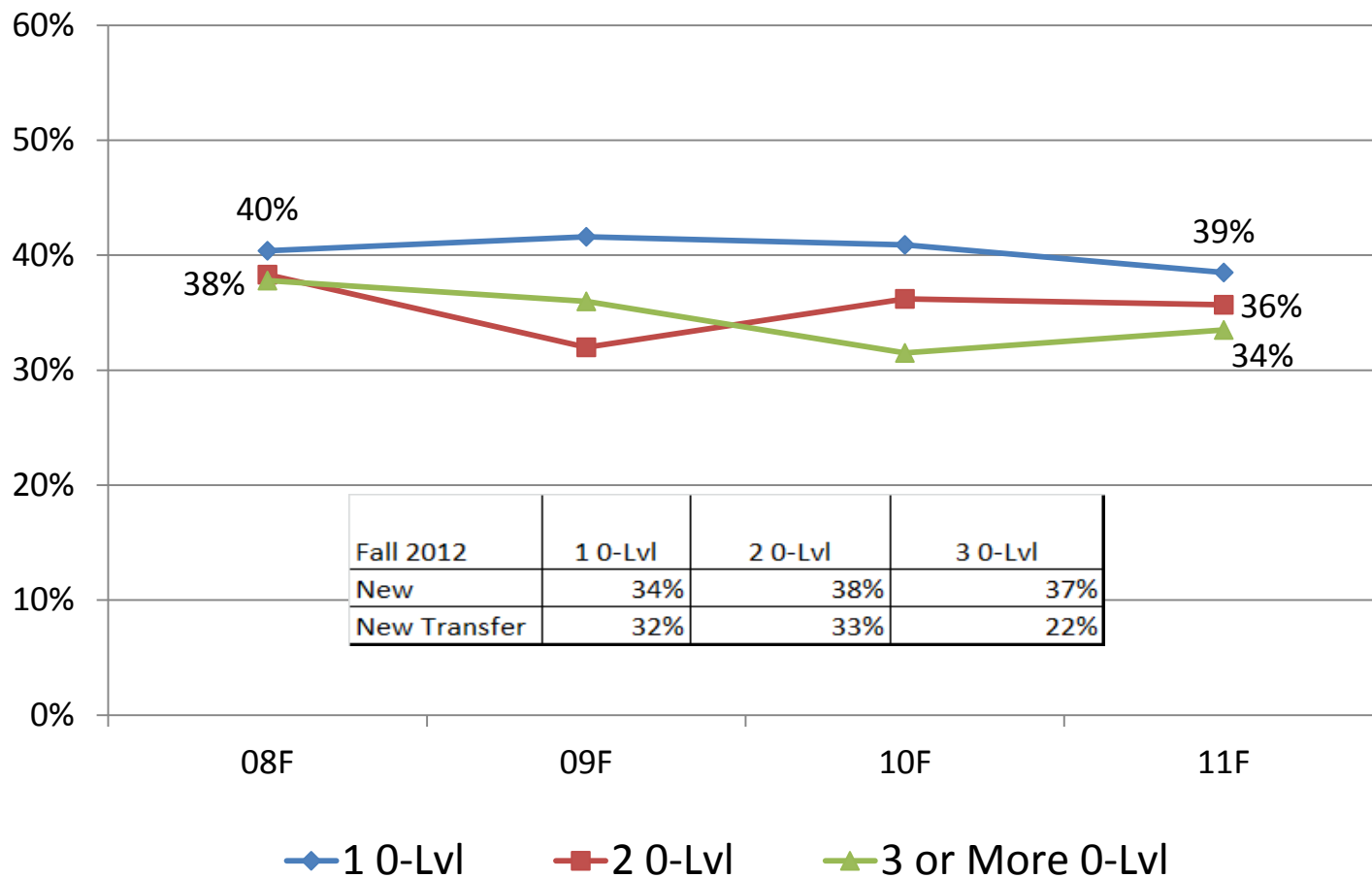
NOW IS
POWER

Fall 2012 AtD Cohort Retention Financial Aid (EFC)



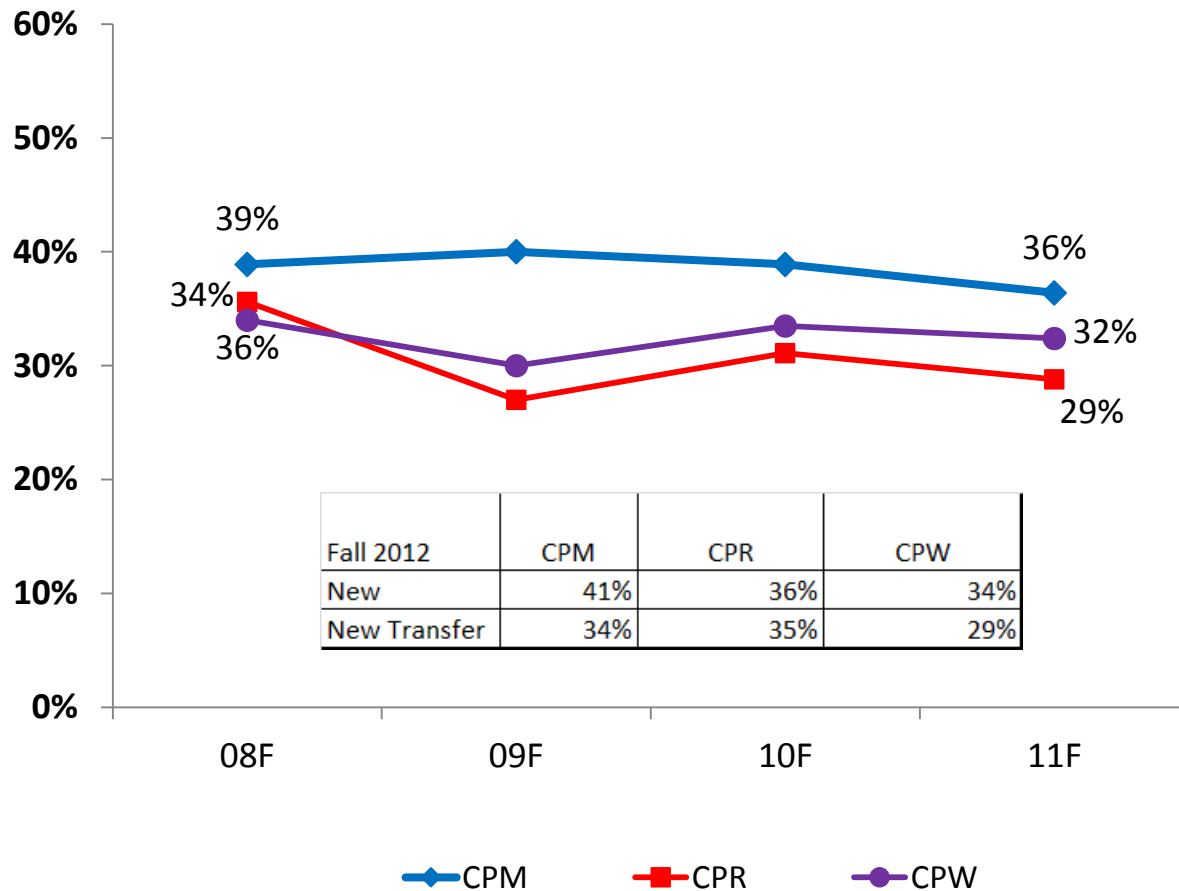
**NOW IS
POWER**

Fall 2012 AtD Cohort Retention Enrolled in 0-Level Courses



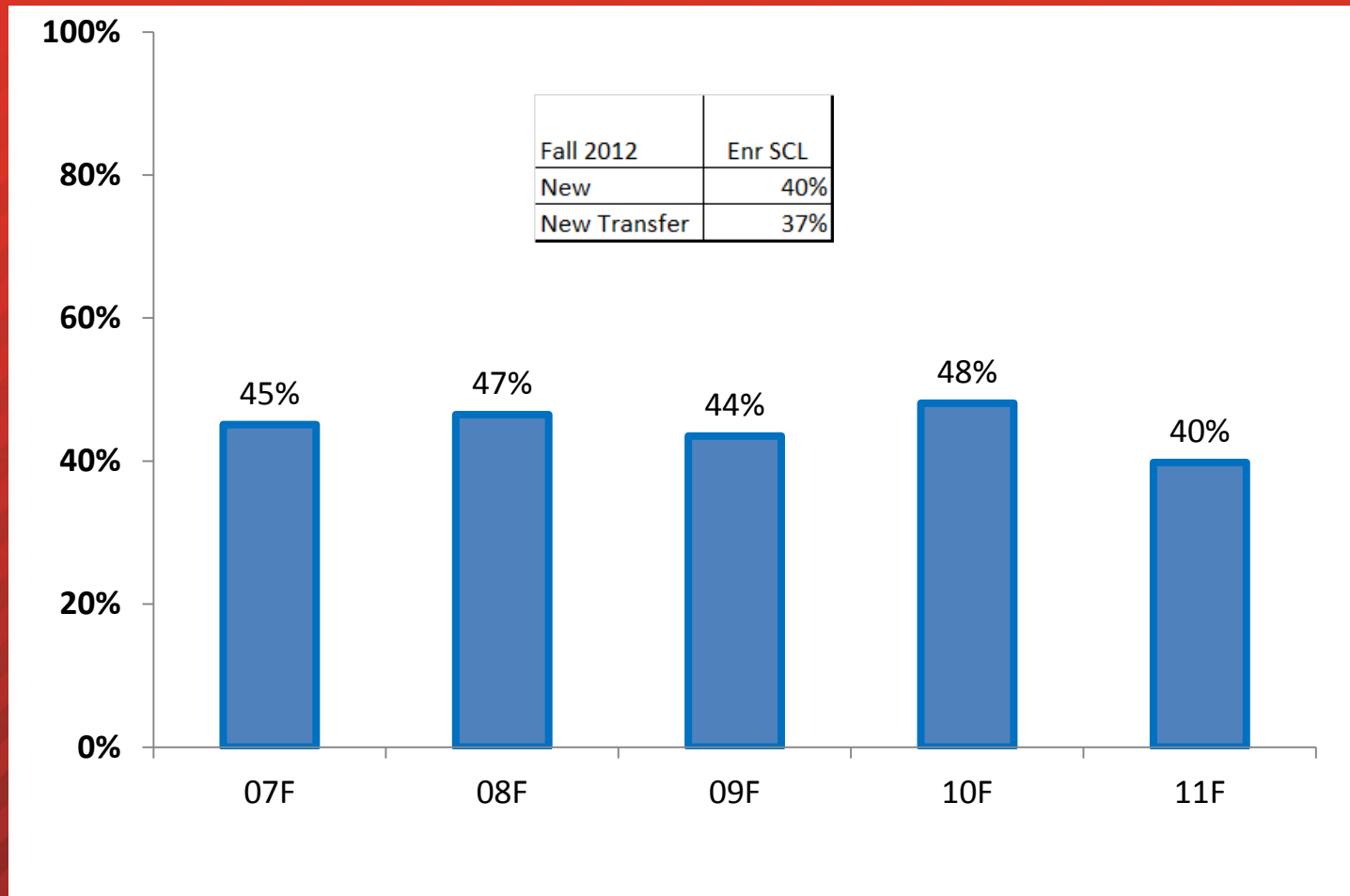
NOW IS
POWER

Fall 2012 AtD Cohort Retention Enrolled in College Prep Courses



NOW IS
POWER

Fall 2012 AtD Cohort Retention Enrolled in SCL



NOW IS 
POWER

Fall 2012 AtD Cohort Retention

Fall 2012 Retention Rates that declined more than the Overall Retention Rate of 34.2%

Males – 31.9%	GED – 28.6% *
25-29 year olds – 29.1% *	No Credential – 13.5%
Black/African Americans – 25.2%	Developmental Reading – 28.8%
Part-time – 27.4%	Developmental Writing – 32.4%
Did Not Apply for Financial Aid – 29.7%	New Transfer – 28.5%

Red Text indicates 3 or more percentage points decrease from Overall

* Indicates a decline of 2 or more consecutive years



Fall 2012 AtD Cohort Retention

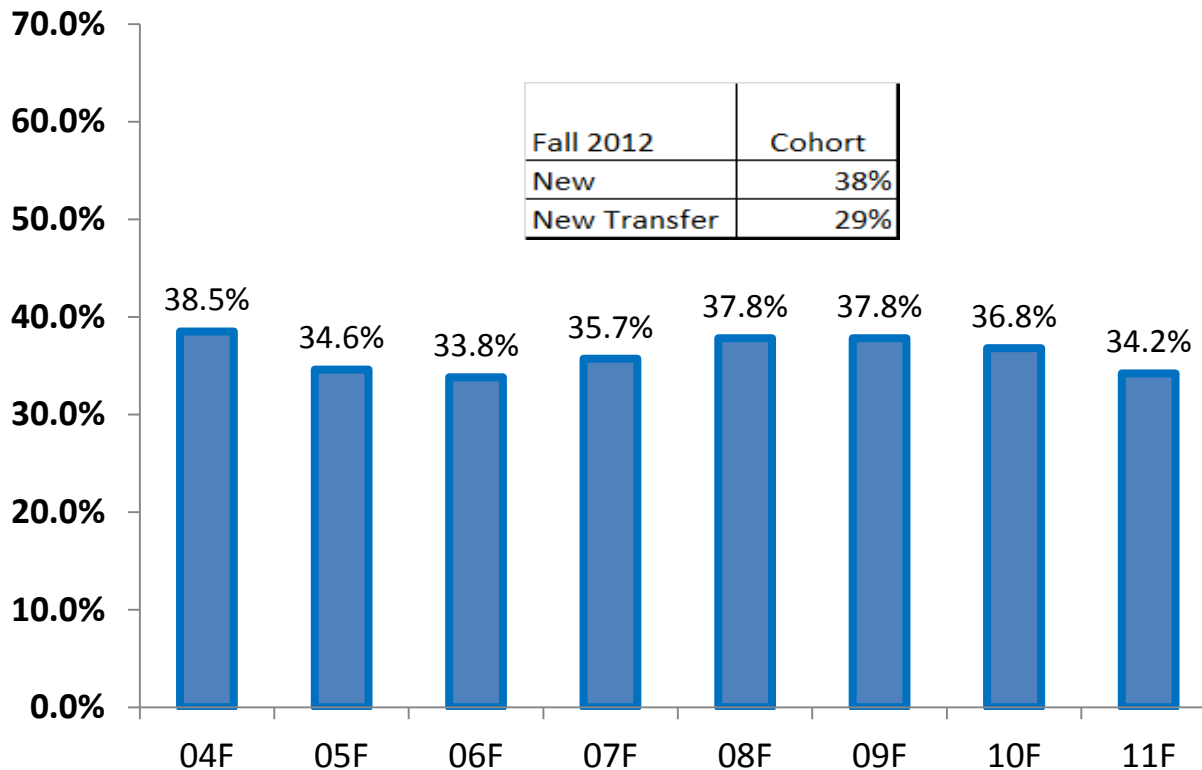
Fall 2012 Retention Rates that increased more than the Overall Retention Rate of 34.2%

Females – 35.8%	Full-time – 40.1%
18-24 year olds – 35.0%	\$1501-> \$20,000
Asian – 53.9%	SCL Fall or Spring – 42.5%
Hispanic/Latino – 36.0%	Successful SCL Fall or Spring – 59.7%
Native American/Alaskan – 36.5%	One or Two Zero-Level Course
New Student – 38.0%	OKC-Go – 38.5%

Green Text indicates 3 or more percentage points increase from Overall



Fall 2012 AtD Cohort Retention



NOW IS 
POWER