



Complete College OCCC

Overview of Concurrent at OCCC

April 8, 2015

WHO ARE CONCURRENT STUDENTS?

- Concurrent students are juniors (11th grade) or seniors (12th grade) currently attending an accredited high school AND enrolled in one or more college courses.
- Must meet specific ACT, SAT, or GPA guidelines and have letters from high school principal and counselor, as well as written parental permission

WHO ARE CONCURRENT STUDENTS?

- May enroll in a combined number of high school and college courses per semester not to exceed a full-time college workload of 19 semester credit hours
- Continued enrollment as concurrent student is based on a cumulative college GPA of 2.00 or higher

WHO ARE CONCURRENT STUDENTS?

- State law mandates that concurrent high school seniors are entitled to receive a tuition waiver for a maximum of six credit hours per semester
- OCCC, as well as several other colleges and universities, also provide tuition waivers for concurrent high school juniors for a maximum of six credit hours per semester

WHO ARE CONCURRENT STUDENTS?

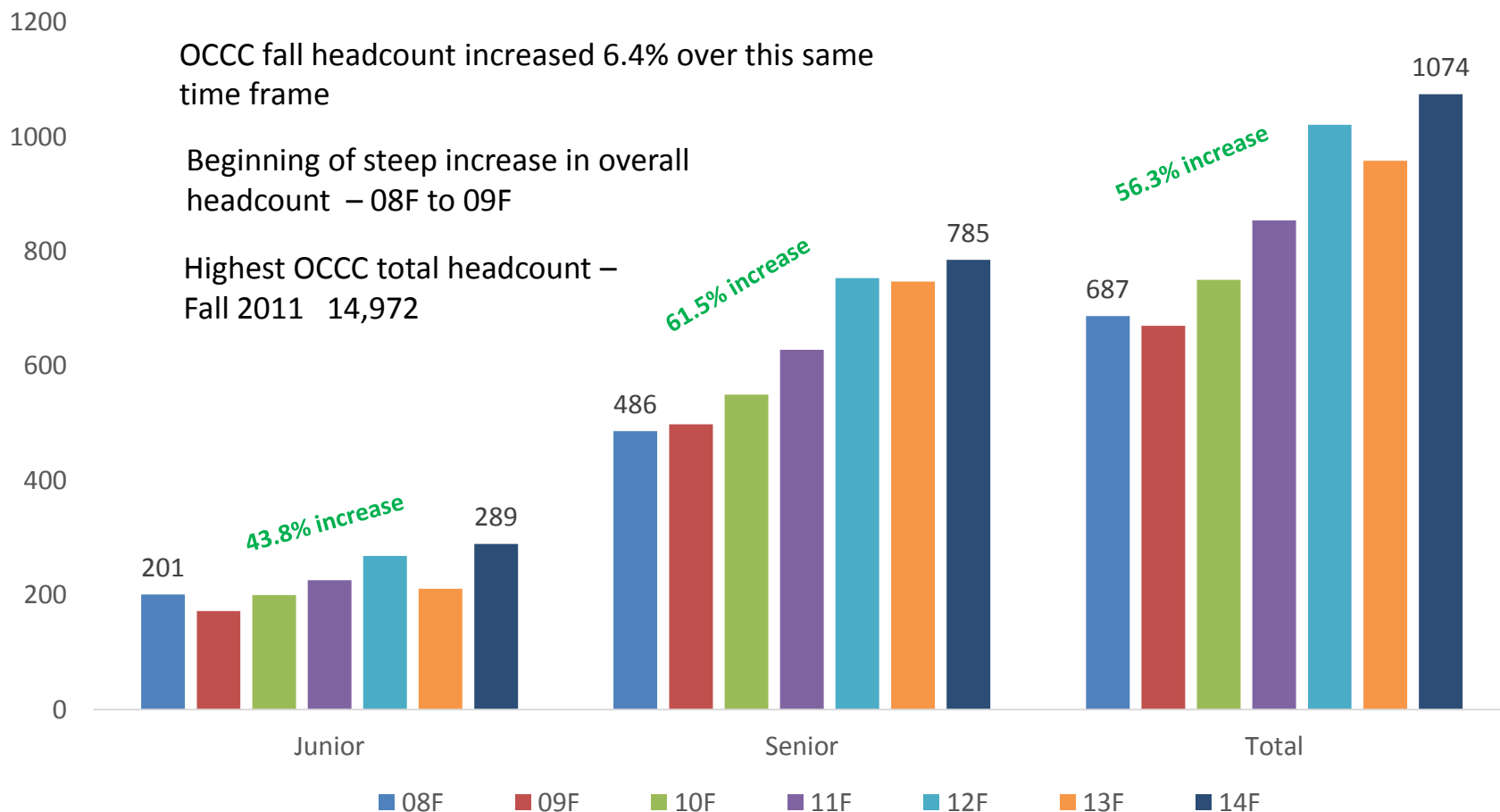
- School districts are required to provide academic credit for any concurrently enrolled higher education courses that are correlated with the academic credit awarded by the institution of higher education.
- Academic credit will only be transcribed as elective credit if there is no correlation between the concurrent enrollment higher education course and a course provided by the school district

WHO ARE CONCURRENT STUDENTS?

- Oklahoma State Regents brochure on Concurrent Enrollment can be found at following link

<http://ok.gov/sde/sites/ok.gov.sde/files/Concurrent%20Enrollment%20Brochure.pdf>

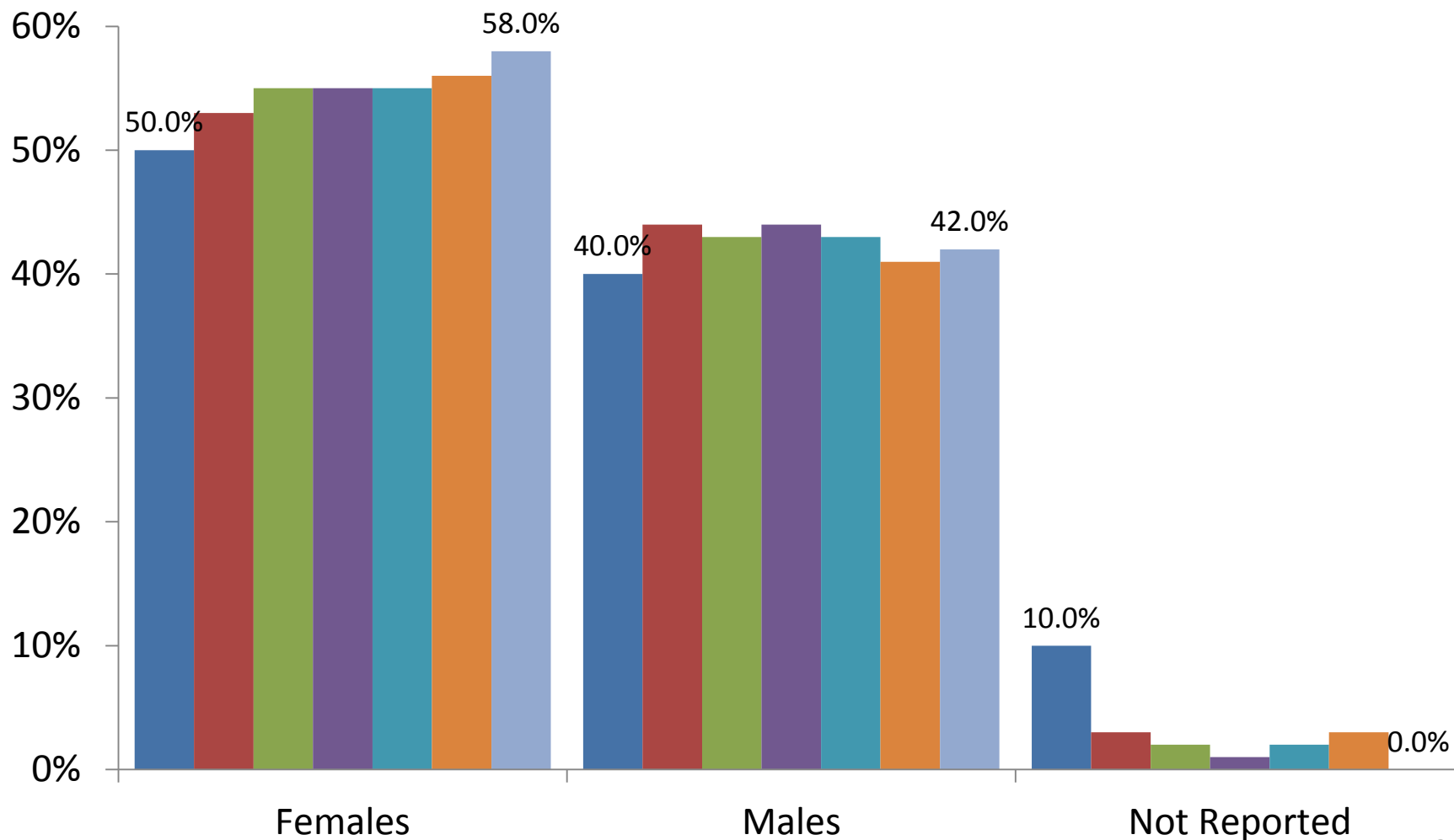
Concurrent Students



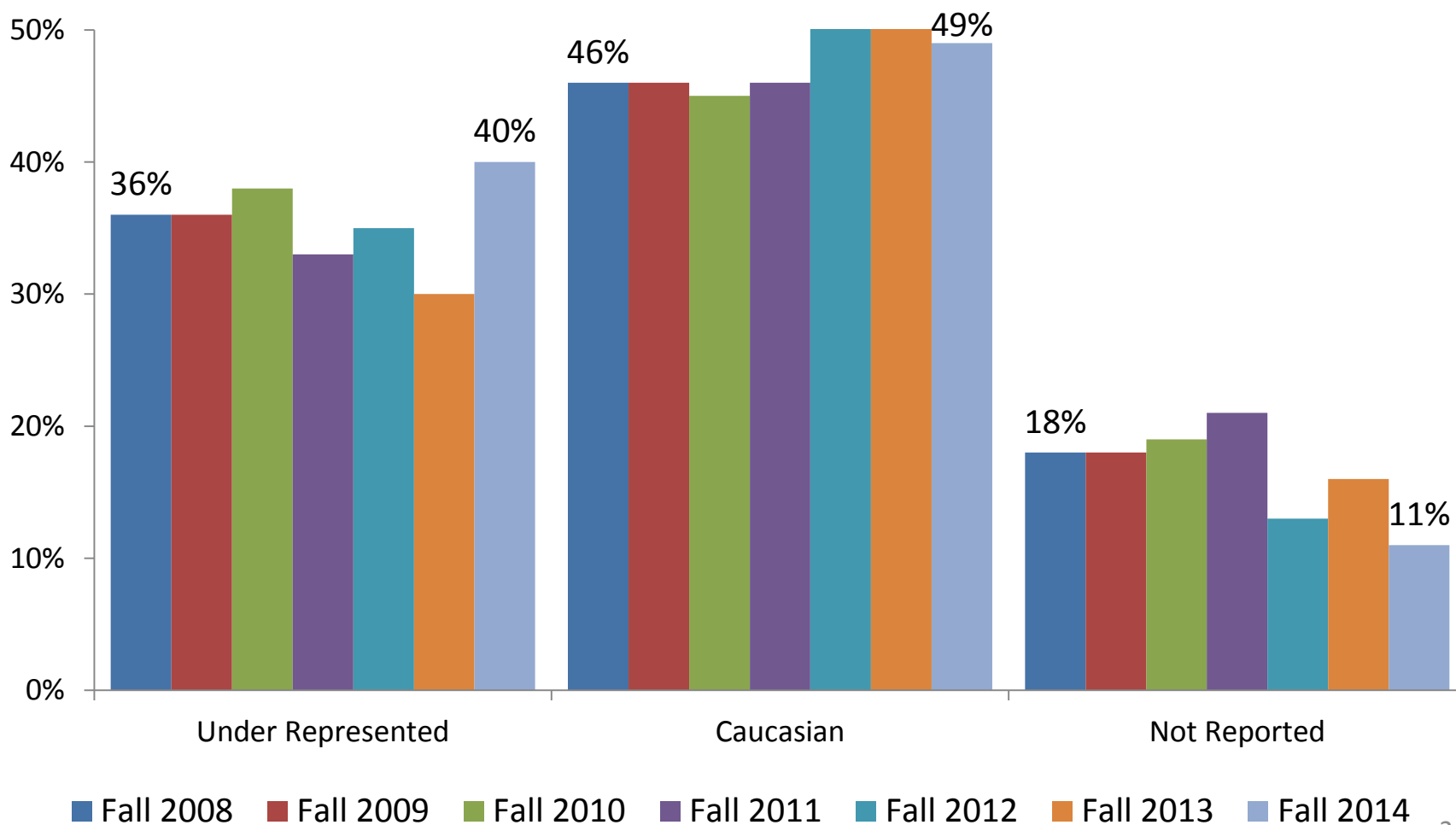
Concurrent Senior Students



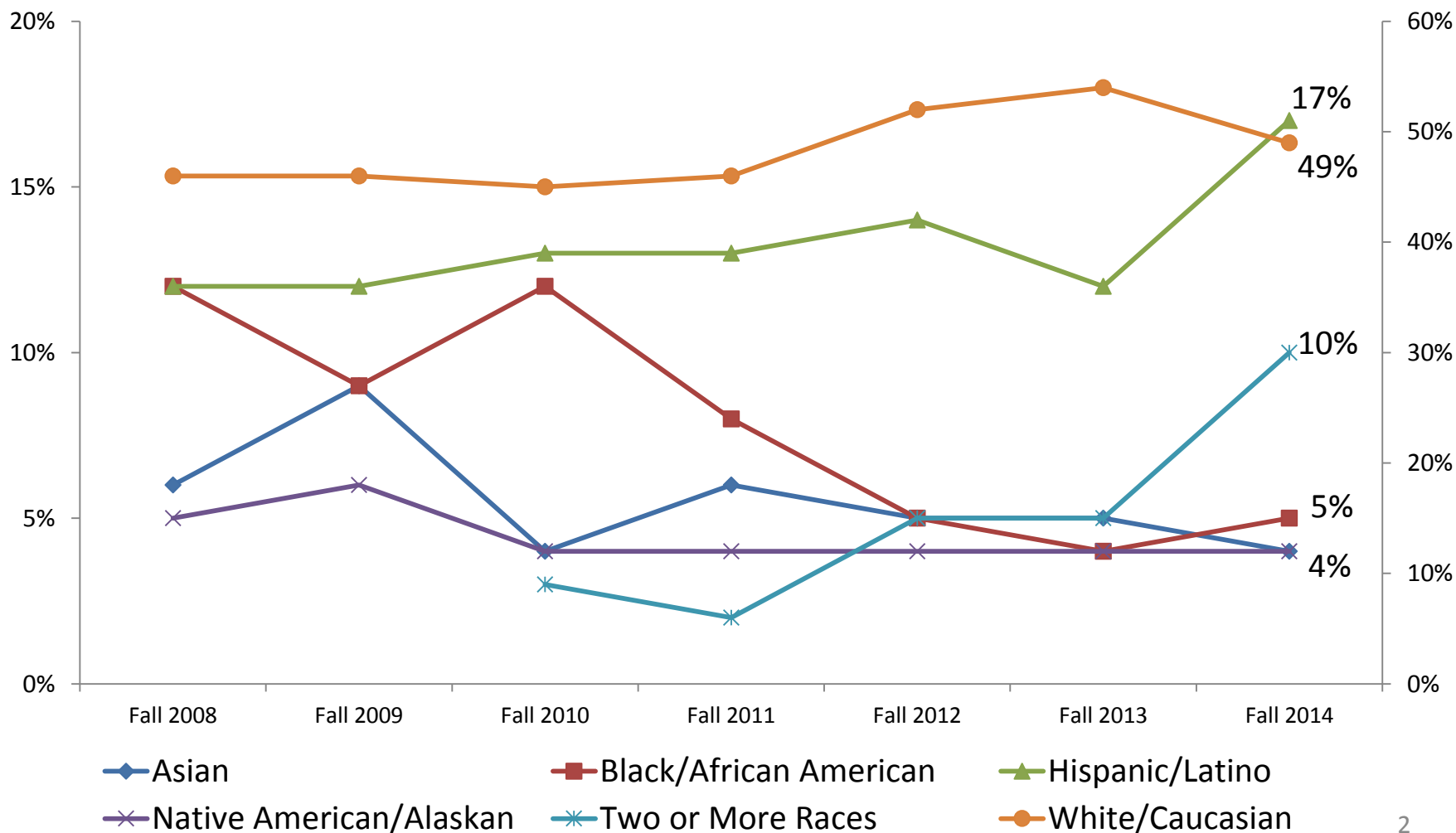
Concurrent Student Gender



CONCURRENT STUDENT ETHNICITY/RACE



CONCURRENT STUDENT ETHNICITY/RACE



Concurrent ACT

ACT Scores	Fall 2008		Fall 2009		Fall 2010		Fall 2011		Fall 2012		Fall 2013		Fall 2014	
	N	%	N	%	N	%	N	%	N	%	N	%	N	%
Number/ Percent with Score	472	69%	485	72%	551	73%	595	70%	759	74%	726	76%	777	72%
Mean	15.4		16.1		16.1		15.3		16.9		17.3		16.4	
Median	22		22		23		22		22		22		22	
Mode	22		21 & 22		20		22		22		21		21 & 22	
Range	13 to 34		12 to 35		12 to 35		10 to 36		12 to 36		13 to 35		13 to 35	

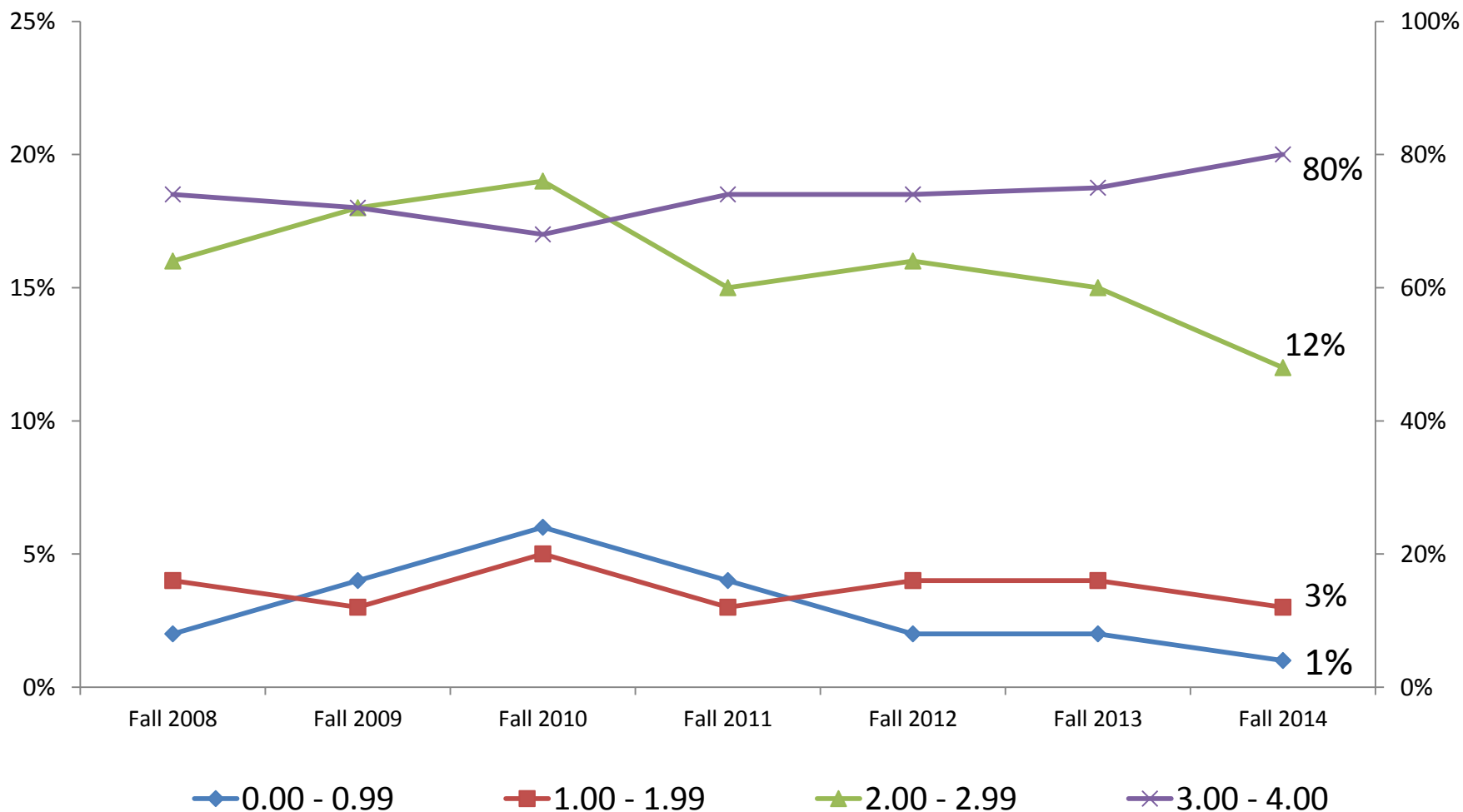
Top 10 High Schools with Most Concurrents

High School Name	Fall 2008		Fall 2009		Fall 2010		Fall 2011		Fall 2012		Fall 2013		Fall 2014	
	N	%	N	%	N	%	N	%	N	%	N	%	N	%
BRIDGE CREEK HIGH SCHOOL	8	1%	8	1%	17	2%	15	2%	19	2%	27	3%	33	3%
CLASSEN SCHOOL ADVANCED STDS	2	0%	5	1%	2	0%	25	3%	36	4%	26	3%	44	4%
DEER CREEK HIGH SCHOOL	21	3%	6	1%	4	1%	6	1%	12	1%	5	1%	2	0%
DOUGLASS HIGH SCHOOL	6	1%	20	3%	43	6%	34	4%	18	2%	5	1%	2%	1%
DOVE SCIENCE ACADEMY	25	4%	1	0%			1	0%			1	0%		
HOMESCHOOL	36	5%	26	4%	16	2%	37	4%	54	5%	37	4%	58	5%
MOORE HIGH SCHOOL	59	9%	33	5%	70	9%	92	11%	99	10%	106	11%	85	8%
MUSTANG HIGH SCHOOL	5	1%	7	1%	18	2%	24	3%	38	4%	27	3%	28	3%
NEWCASTLE HIGH SCHOOL	10	1%	10	1%	22	3%	26	3%	37	4%	64	7%	57	5%
NORMAN HIGH SCHOOL	14	2%	27	4%	23	3%	29	3%	32	3%	21	2%	15	1%
NORMAN HIGH SCHOOL NORTH	25	4%	42	6%	31	4%	51	6%	59	6%	50	5%	86	8%
NORTHEAST ACADEMY	69	10%	37	6%	30	4%	25	3%	19	2%	14	1%	11	1%
NORTHWEST CLASSEN HIGH SCHOOL	21	3%	20	3%	23	3%	3	0%	1	0%	8	1%	8	1%
PUTNAM CITY HIGH SCHOOL	16	2%	24	4%	15	2%	24	3%	18	2%	16	2%	11	1%
PUTNAM CITY NORTH HIGH SCHOOL	13	2%	20	3%	23	3%	14	2%	17	2%	18	2%	23	2%
SANTA FE SOUTH HIGH	12	2%	21	3%	26	3%	29	3%	23	2%	36	4%	32	3%
SOUTHEAST HIGH SCHOOL	23	3%	12	2%	22	3%	42	5%	53	5%	28	3%	39	4%
SOUTHMOORE HIGH SCHOOL	14	2%	36	5%	63	8%	89	10%	98	10%	100	10%	104	10%
ULYSSES S GRANT HIGH SCHOOL	35	5%	25	4%	19	3%	7	1%	20	2%	5	1%	12	1%
WESTERN HEIGHTS HIGH SCHOOL	14	2%	11	2%	27	4%	23	3%	30	3%	23	2%	22	2%
WESTMOORE HIGH SCHOOL	123	18%	110	16%	82	11%	104	12%	115	11%	125	13%	142	13%

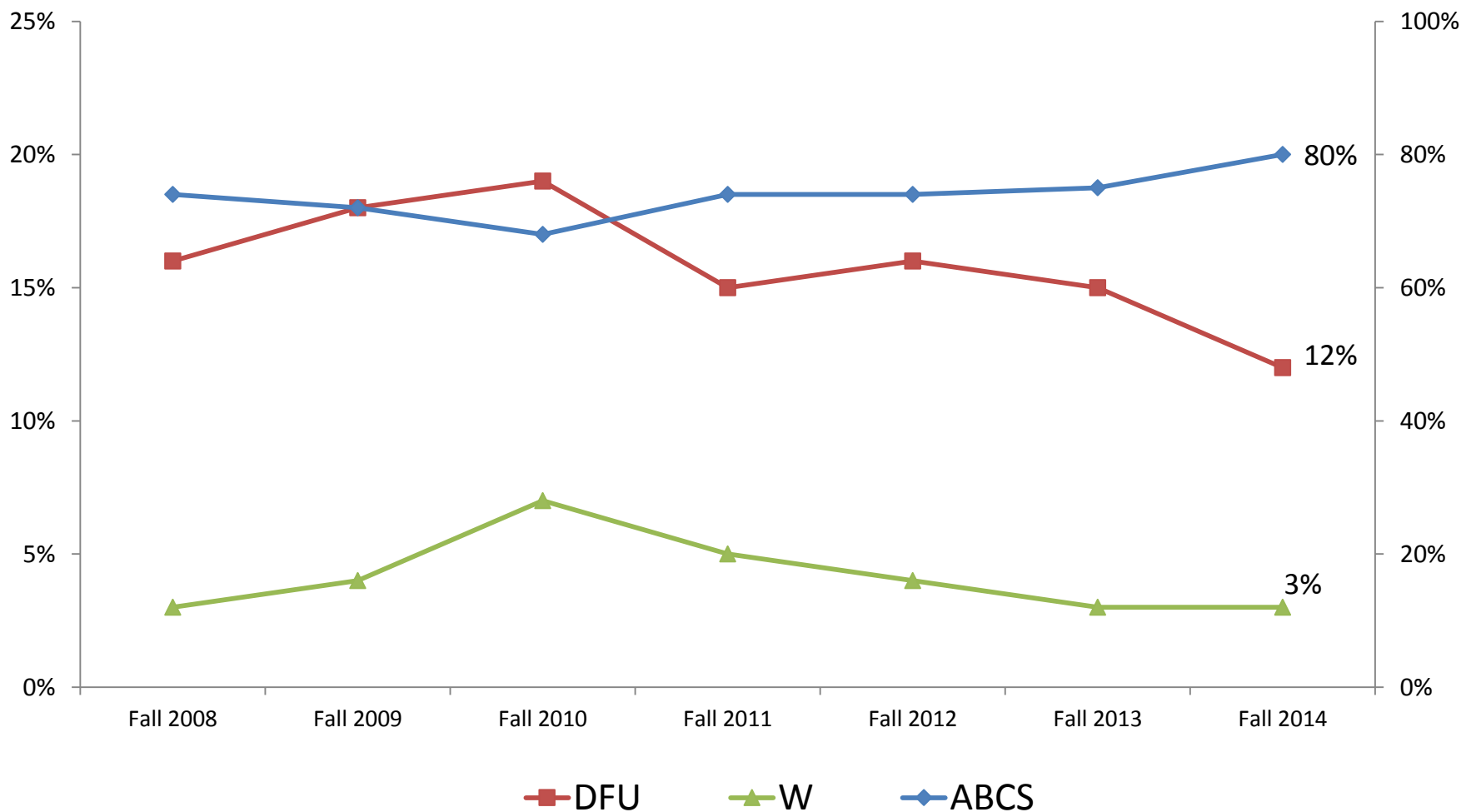
High Schools with 10 or More Concurrent Students Enrolled Fall 2014

High School Name	N	%		High School Name	N	%
WESTMOORE HIGH SCHOOL	142	13%		PATHWAYS HIGH SCHOOL	16	1%
SOUTHMOORE HIGH SCHOOL	104	10%		NORMAN HIGH SCHOOL	15	1%
NORMAN HIGH SCHOOL NORTH	86	8%		CAPITOL HILL HIGH SCHOOL	14	0.0
MOORE HIGH SCHOOL	85	8%		WASHINGTON HIGH SCHOOL	14	1%
HOMESCHOOL	58	0.1		WAYNE HIGH SCHOOL	14	1%
NEWCASTLE HIGH SCHOOL	57	5%		NOBLE HIGH SCHOOL	13	1%
CLASSEN SCHOOL ADVANCED STDS	44	0.0		PURCELL HIGH SCHOOL	13	1%
SOUTHEAST HIGH SCHOOL	39	4%		TUTTLE HIGH SCHOOL	12	1%
BRIDGE CREEK HIGH SCHOOL	33	0.0		ULYSSES S GRANT HIGH SCHOOL	12	1%
SANTA FE SOUTH HIGH	32	3%		LEXINGTON HIGH SCHOOL	11	0.0
MUSTANG HIGH SCHOOL	28	3%		NORTHEAST ACADEMY	11	1%
BLANCHARD HIGH SCHOOL	24	0.0		PUTNAM CITY HIGH SCHOOL	11	1%
PUTNAM CITY NORTH HIGH SCHOOL	23	2%		EDMOND NORTH HIGH SCHOOL	10	0.0
WESTERN HEIGHTS HIGH SCHOOL	22	2%				

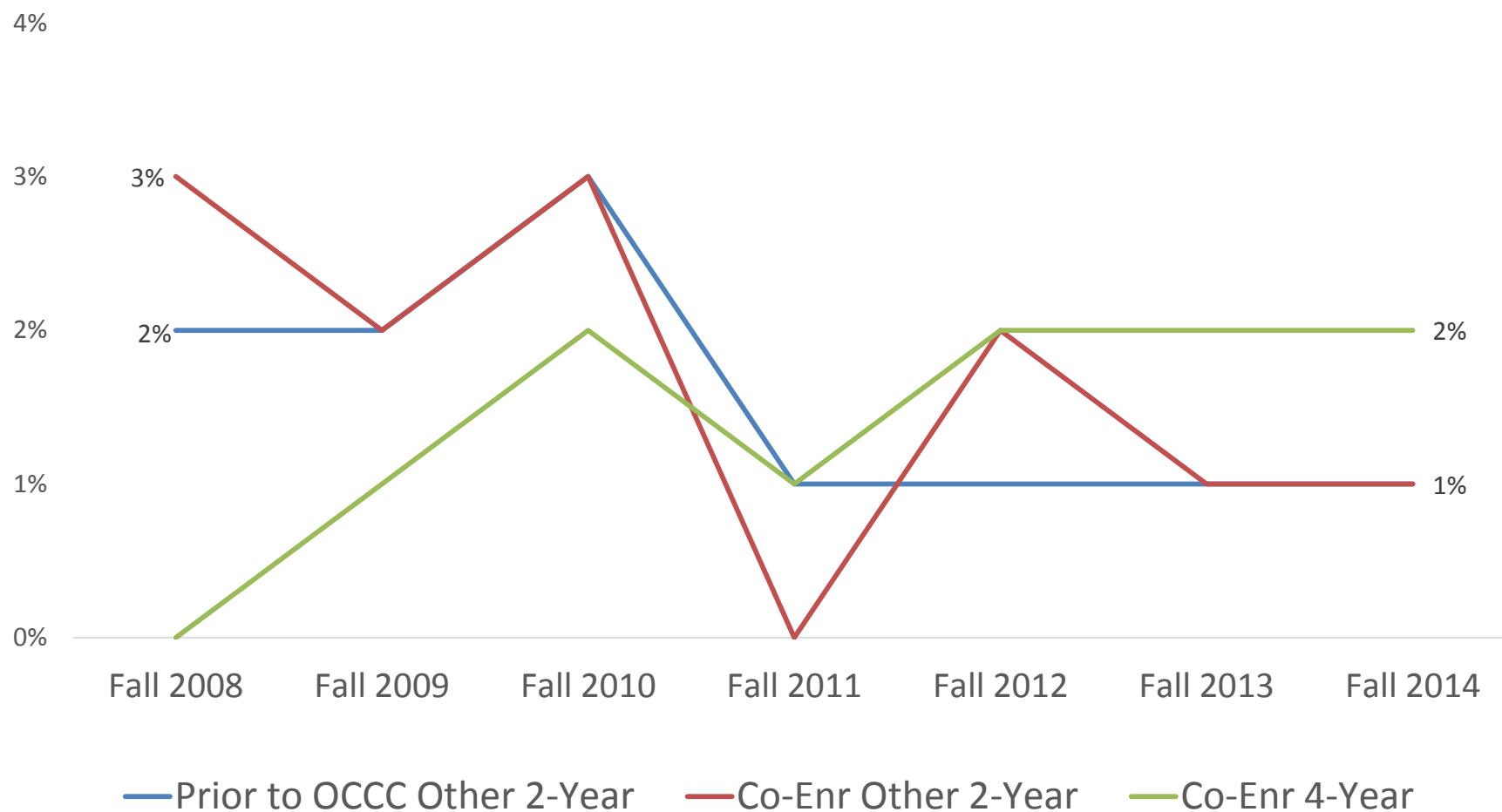
CONCURRENT STUDENT FALL SEMESTER GPA



CONCURRENT STUDENT FALL SEMESTER CREDIT HOUR SUCCESS RATE



Attended Elsewhere Prior to OCCC or Co-Enrolled



CONCURRENT ATTENDING OTHER COLLEGES/UNIVERSITIES

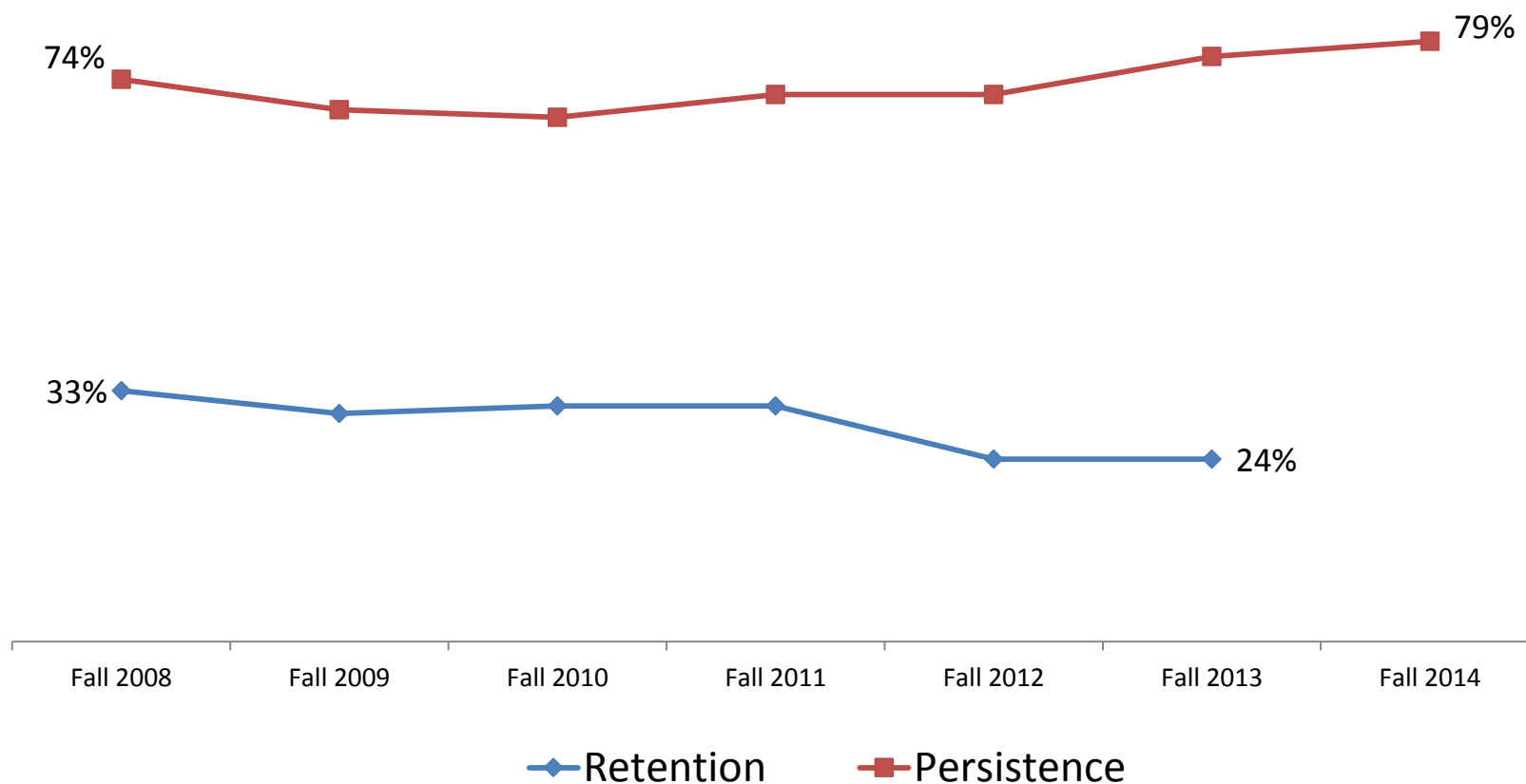
Schools Attended Prior to OCCC

- Rose State College
- OSU – OKC
- OSU – Institute of Tech
- Redlands
- OU
- UCO

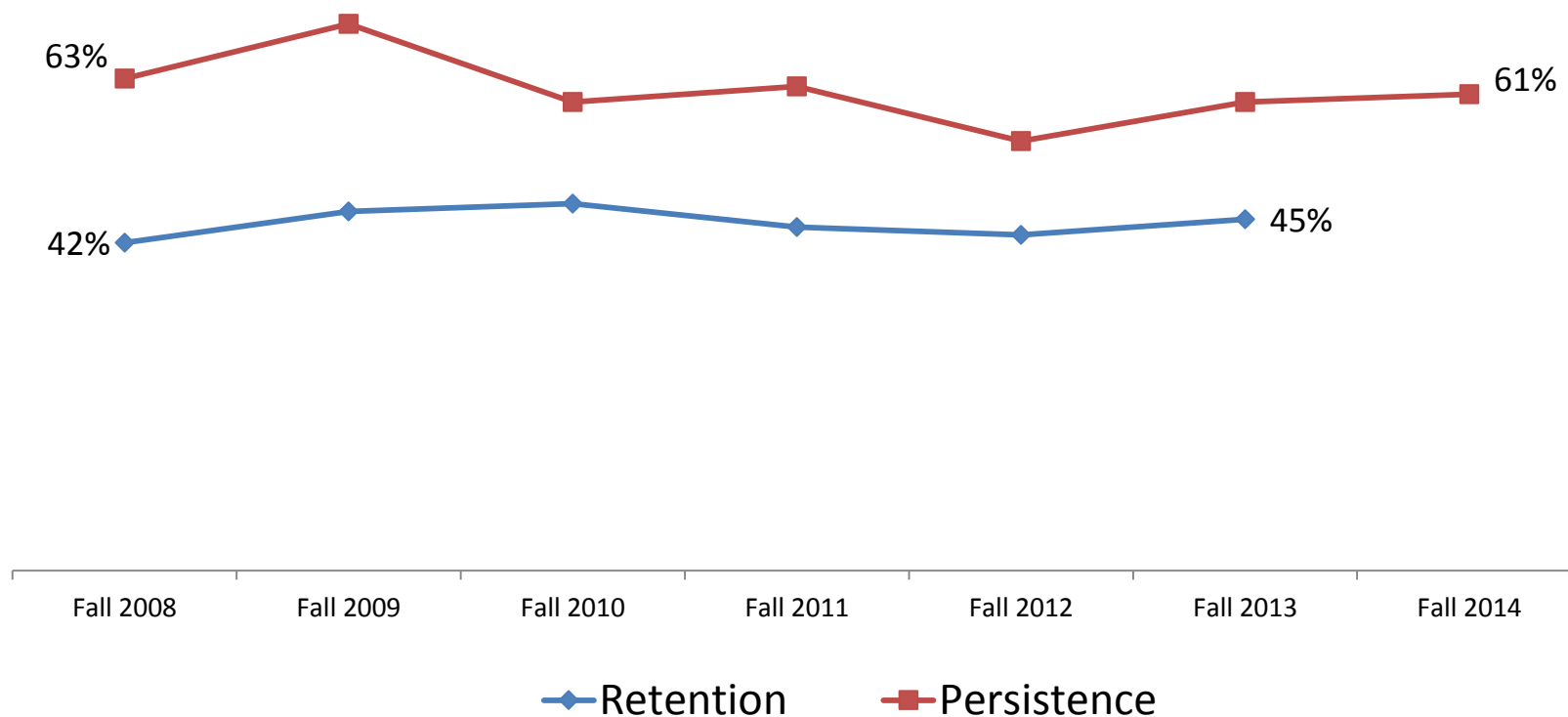
Co-Enrolled with OCCC

- Rose State College
- OSU – OKC
- Redlands
- UCO
- OU
- Seminole State College
- Mid-America

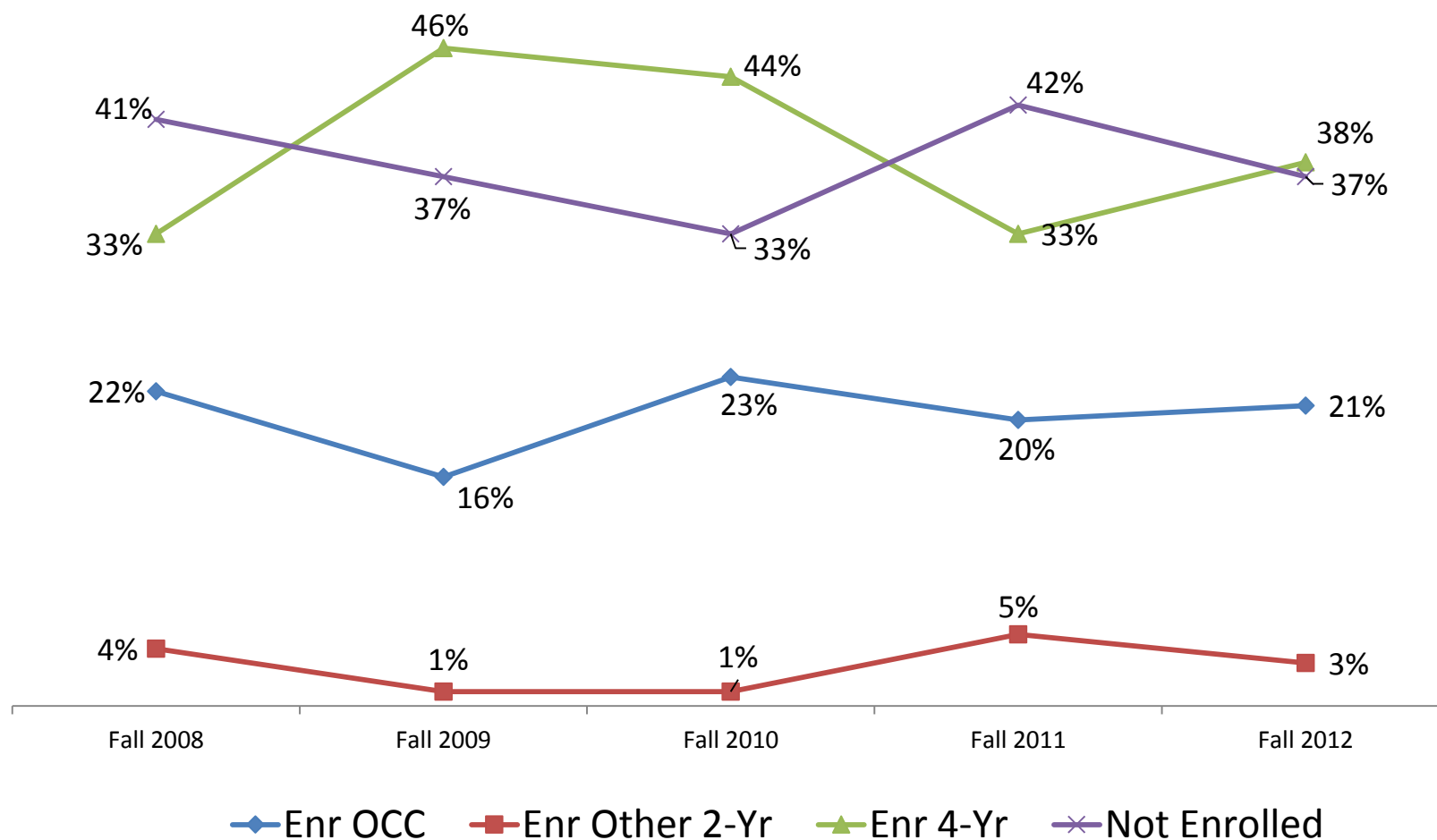
NEW SENIOR CONCURRENT STUDENT PERSISTENCE & RETENTION



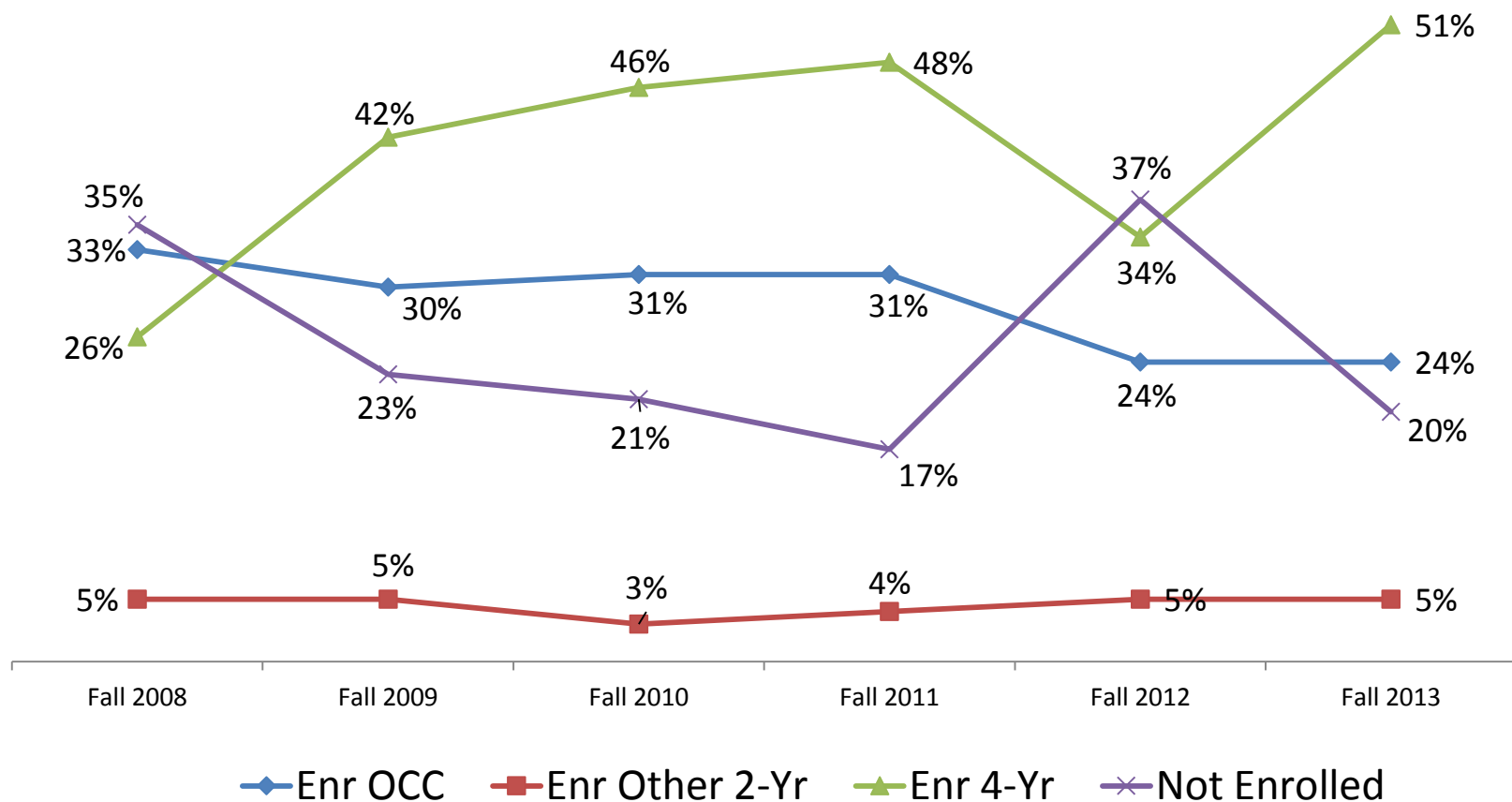
JUNIOR CONCURRENT STUDENT PERSISTENCE & RETENTION



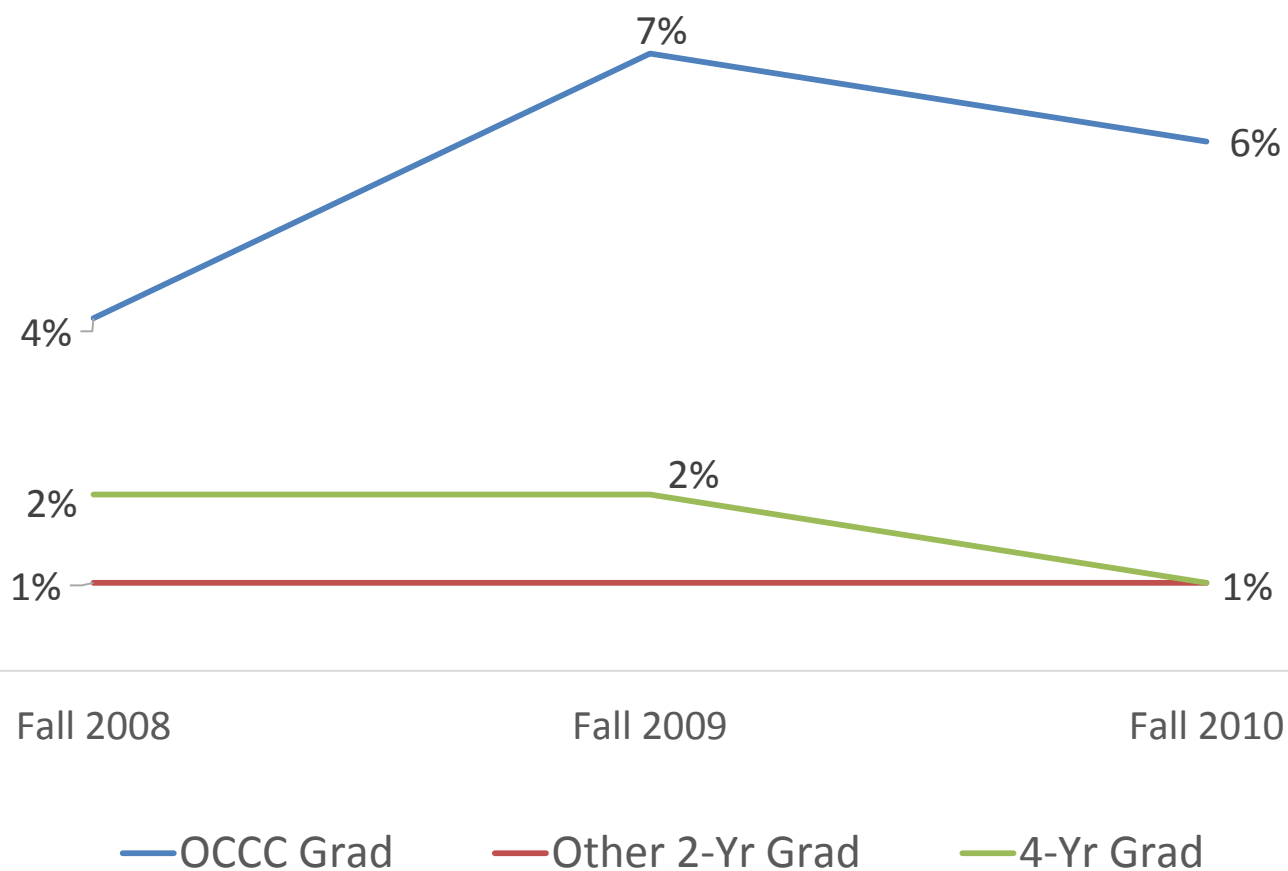
JUNIOR CONCURRENT ENROLLMENT AFTER HIGH SCHOOL YEAR END DATE



NEW SENIOR CONCURRENT ENROLLMENT AFTER HIGH SCHOOL YEAR END DATE



GRADUATE WITHIN 3 YEARS OF HIGH SCHOOL LAST YEAR



CONCURRENT GRADUATING WITHIN 3 YEARS FROM OTHER COLLEGE

- Mid-America
- Northeastern
- Northern OK College
- Oklahoma City Univ
- OSU – OKC
- OSU – Univ Inst of Tech
- OU
- Rose State College
- Redlands
- Seminole State College
- Southern Nazarene Univ
- Southwestern Christian
- Tulsa Community College
- UCO
- Univ of Science & Arts

Concurrent Students

Other questions to explore?