



# Complete College OCCC

Composition, Persistence  
& Retention  
of First-time OKC-Go!  
Students and  
Comparison Cohort

*April 25, 2013*

## DEFINITION OF TERMS

**What is OKC-GO:** The OKC-GO program is designed to remove some of the financial barriers that might limit a student's ability to succeed in college. The program is exclusive to OCCC and services graduates from Oklahoma City and Western Heights public high schools. Eligible students can attend OCCC tuition free for up to 3 years or 61 college credit hours.

## DEFINITION OF TERMS

### Who can Participate:

- ASTEC
- Capitol Hill
- Centennial
- Classen SAS
- Dove Science Academy
- Douglass
- Emerson
- Harding Charter
- John Marshall
- John Wesley
- Northeast Academy
- Northwest Classen
- Pathways
- Renew
- Santa Fe South
- S.A.V.E Academy
- Seeworth
- Southeast
- Star Spencer
- U.S. Grant
- Western Heights

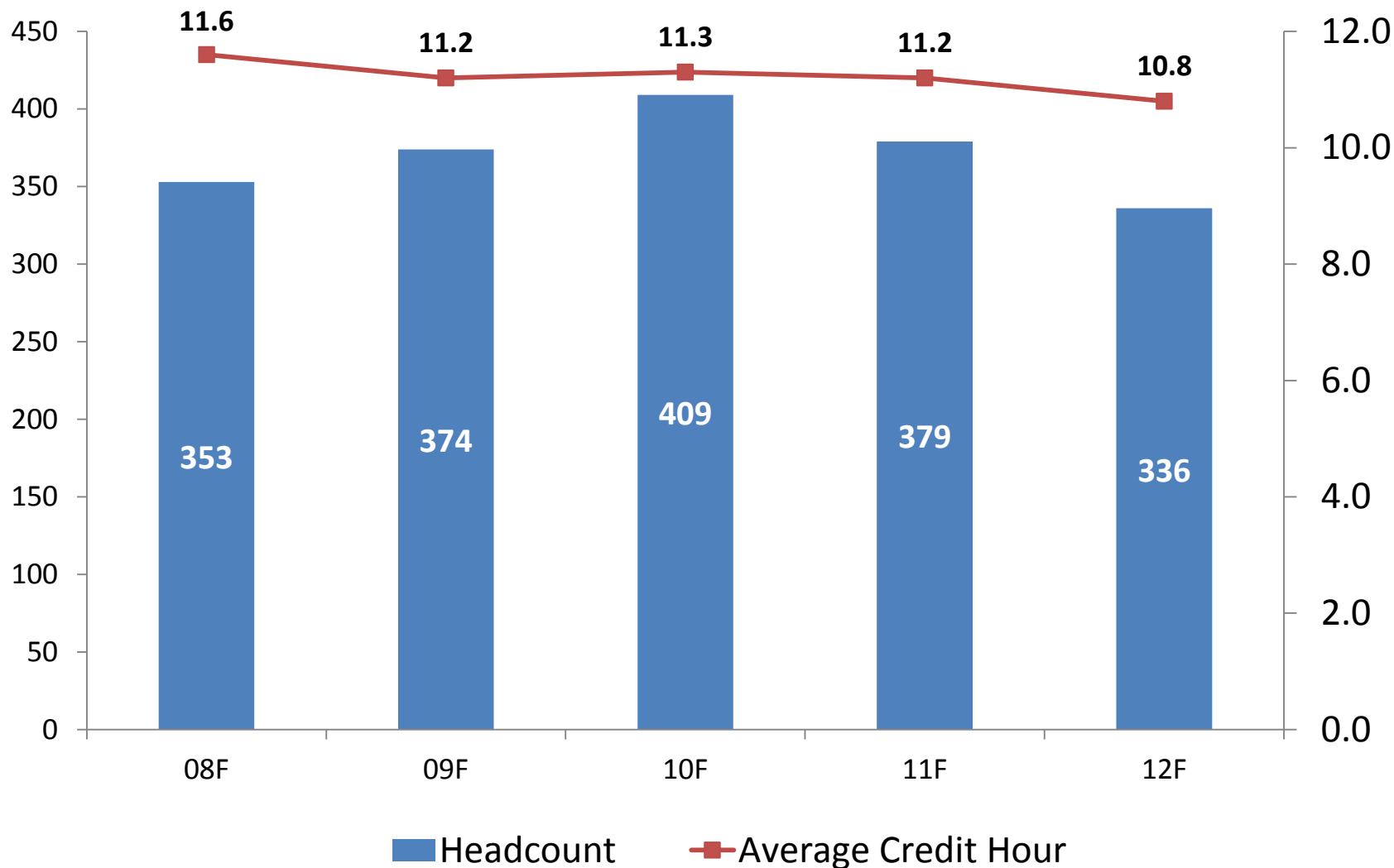
## DEFINITION OF TERMS

**First Time OKC-Go Cohort:** Includes students that graduated from a participating OKC-GO high school in a given spring semester, accepted an OKC-Go tuition scholarship, and began classes at OCCC the subsequent summer and/or fall semester.

**Comparison Cohort:** Includes all spring high school graduates from non-participating OKC-GO schools in a given spring semester that began classes at OCCC the subsequent summer and/or fall semester.

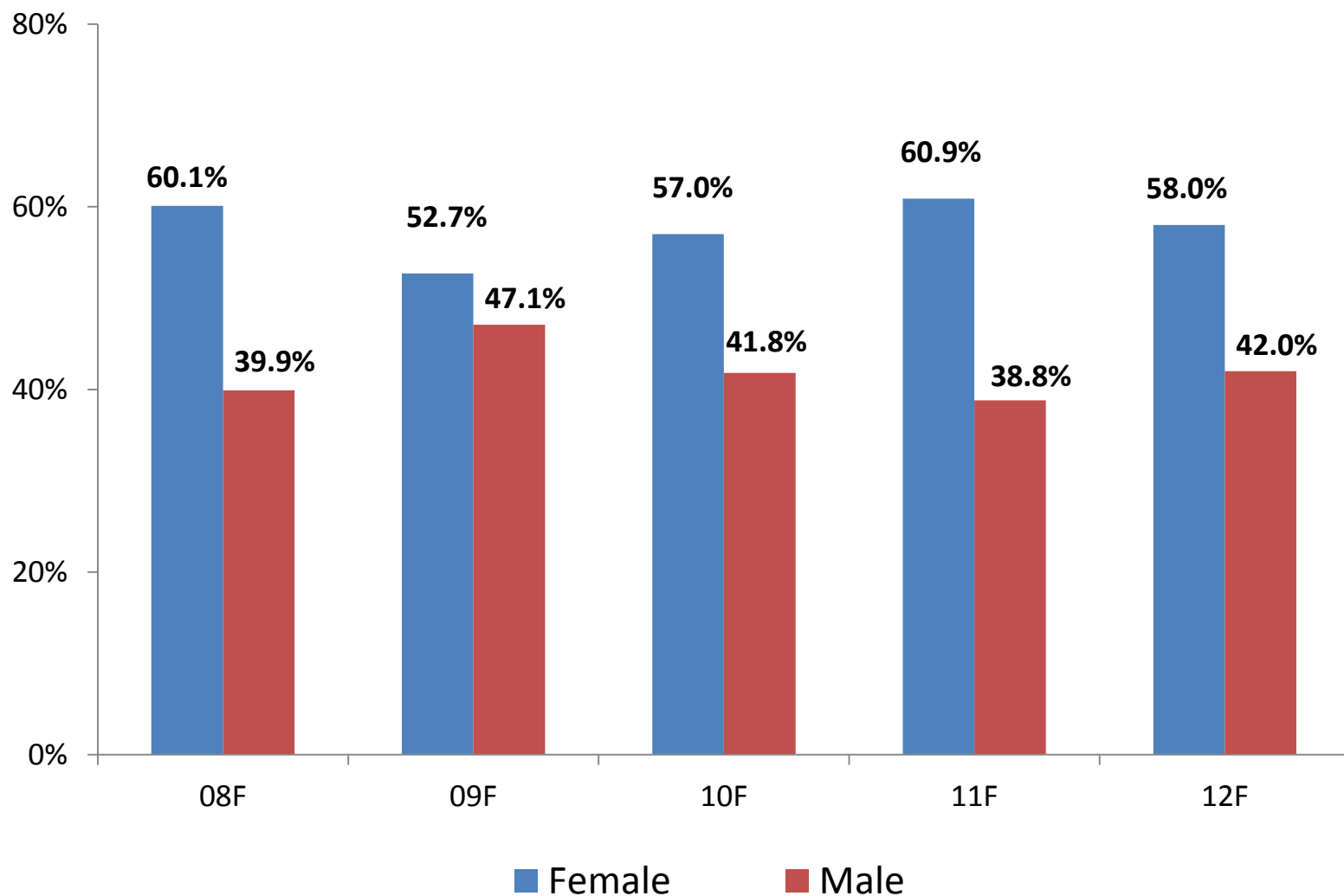
COMPOSITION

# Composition of OKC-Go! Headcount and Average Credit Hour

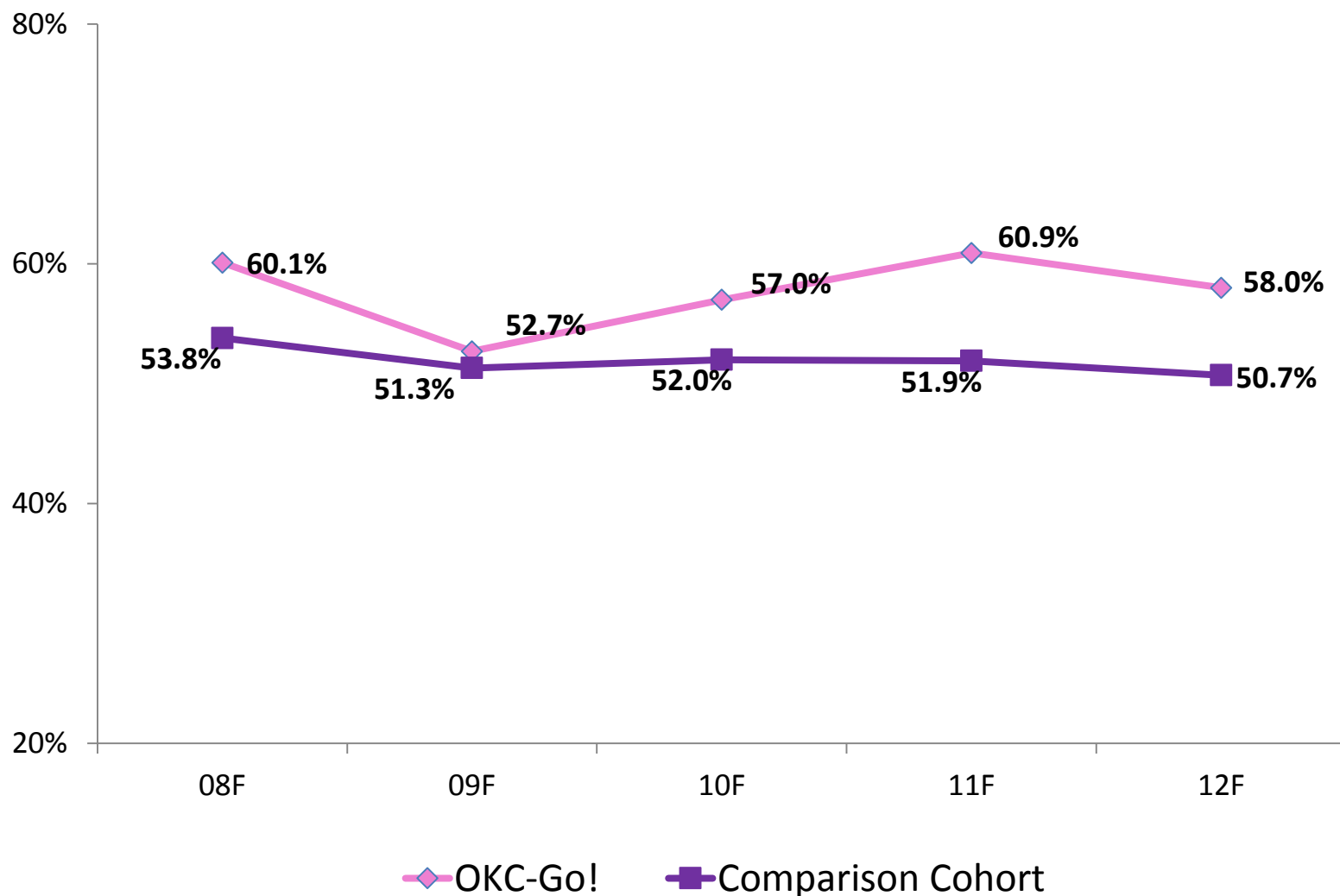


# Composition of OKC-Go!

## Gender

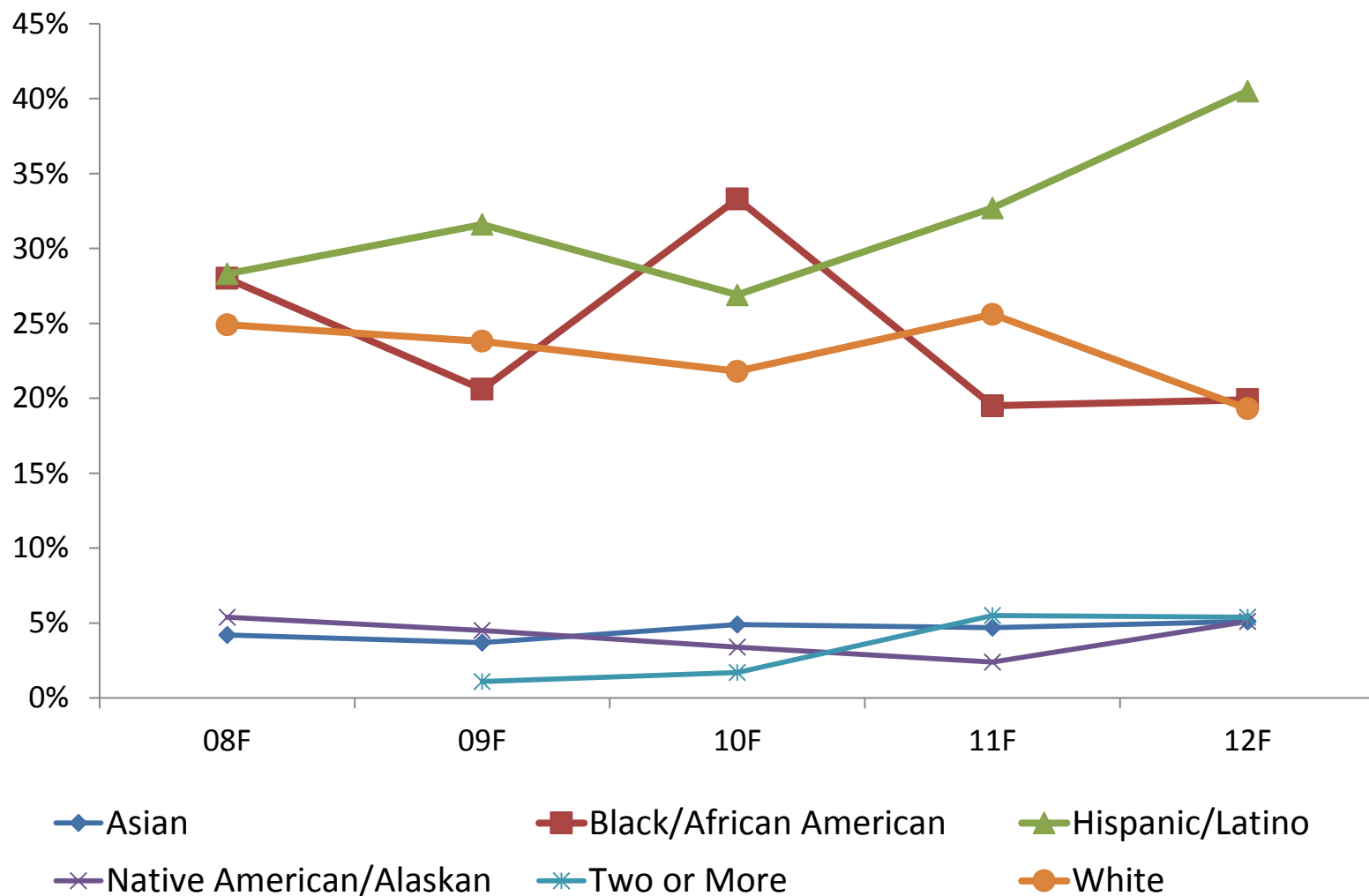


# Composition of OKC-Go! & Comparative Cohort Gender – Female



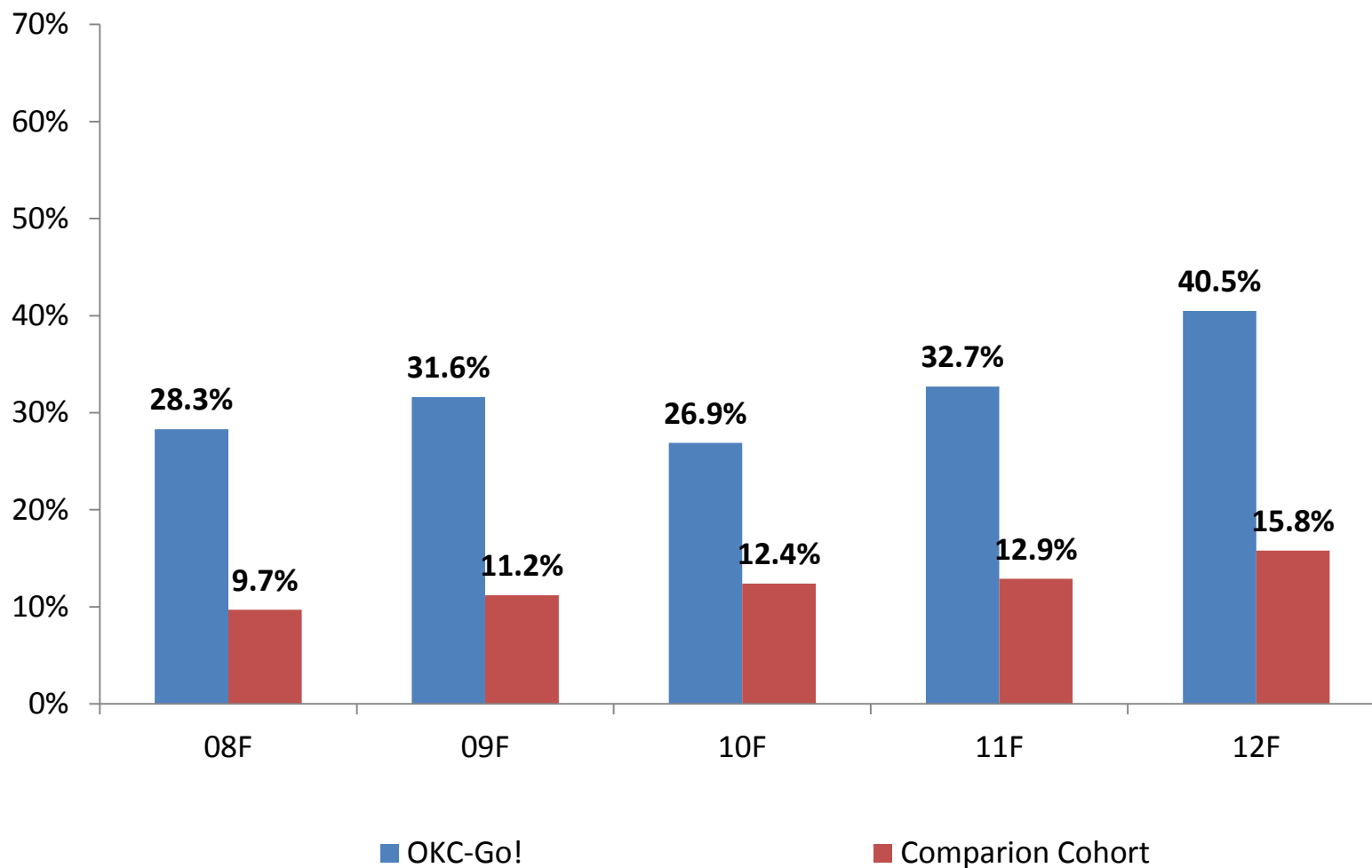


# Composition of OKC-Go! Ethnicity/Race



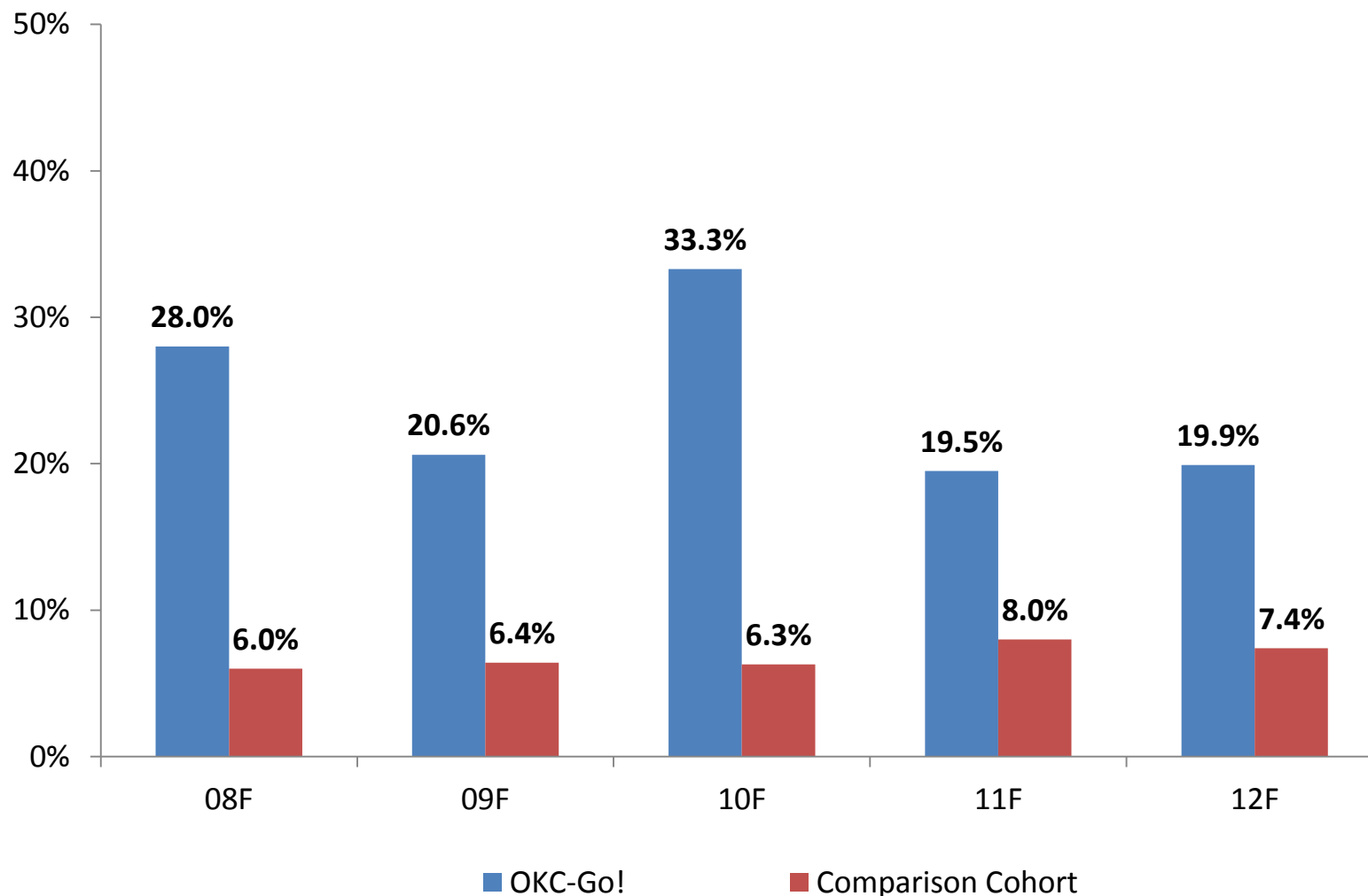
# Composition of OKC-Go! & Comparison Cohort

## Ethnicity/Race – Hispanic/Latino



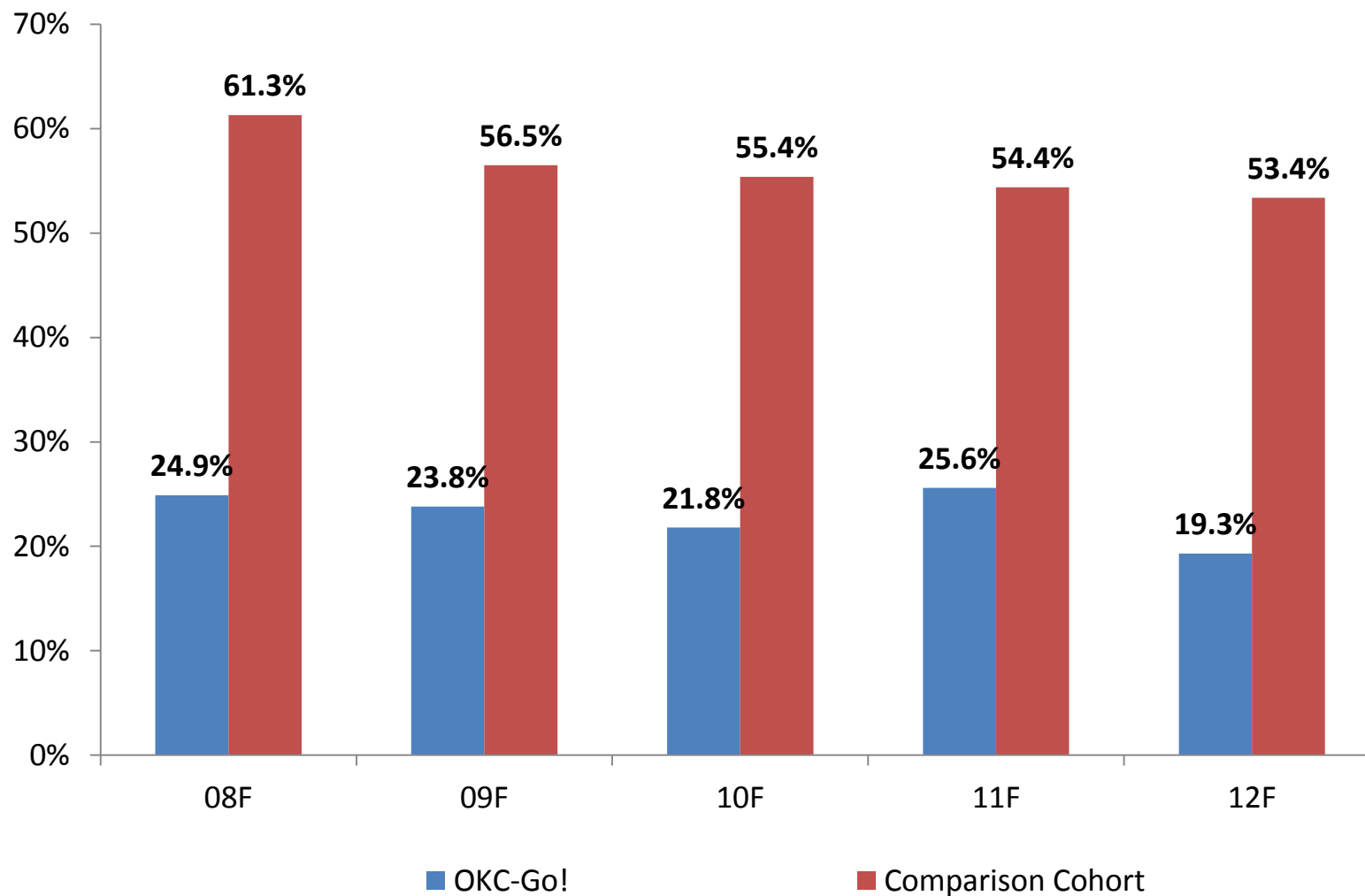
# Composition of OKC-Go! & Comparison Cohort

## Ethnicity/Race – Black/African American

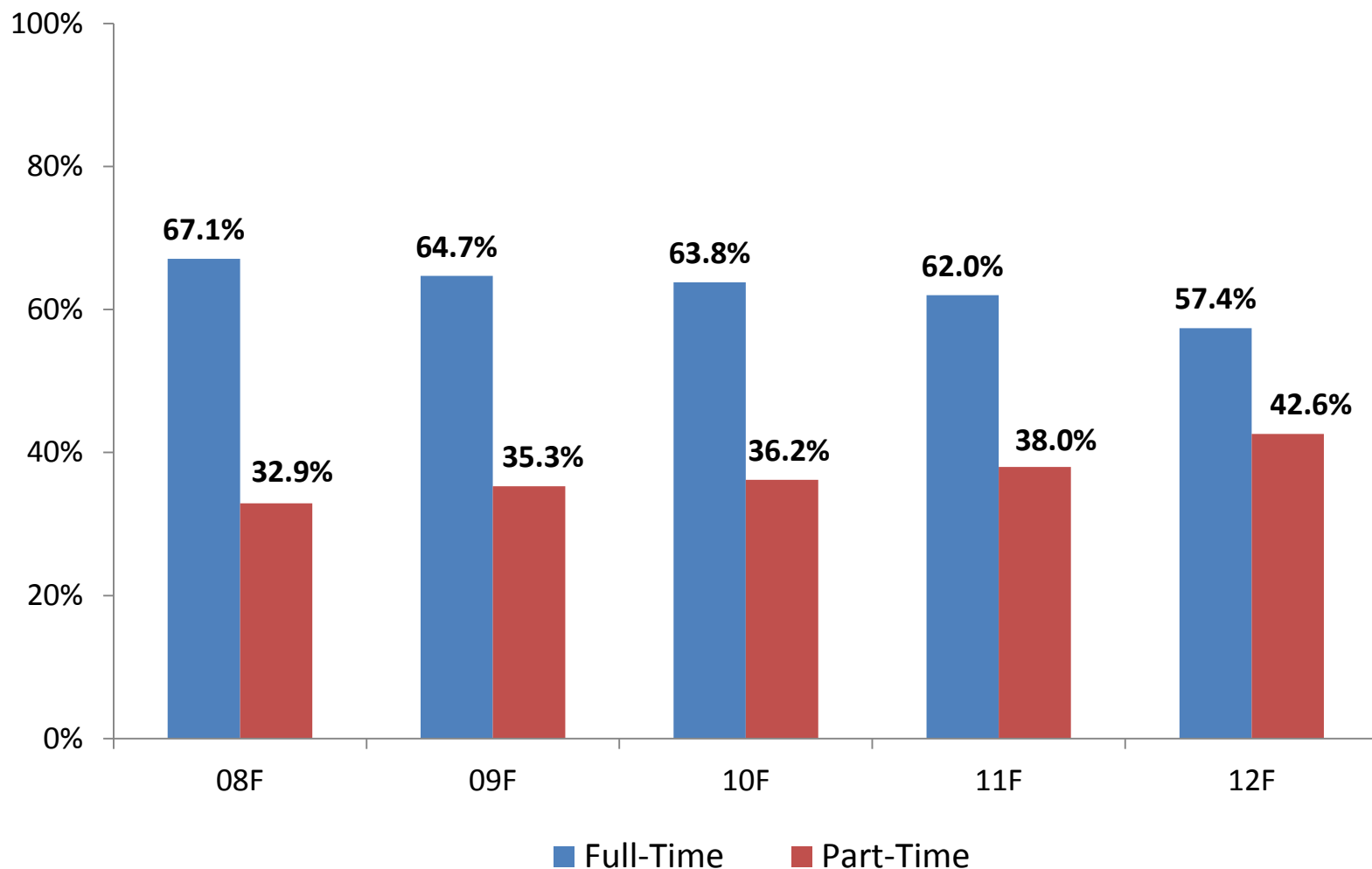


# Composition of OKC-Go! & Comparison Cohort

## Ethnicity/Race – White

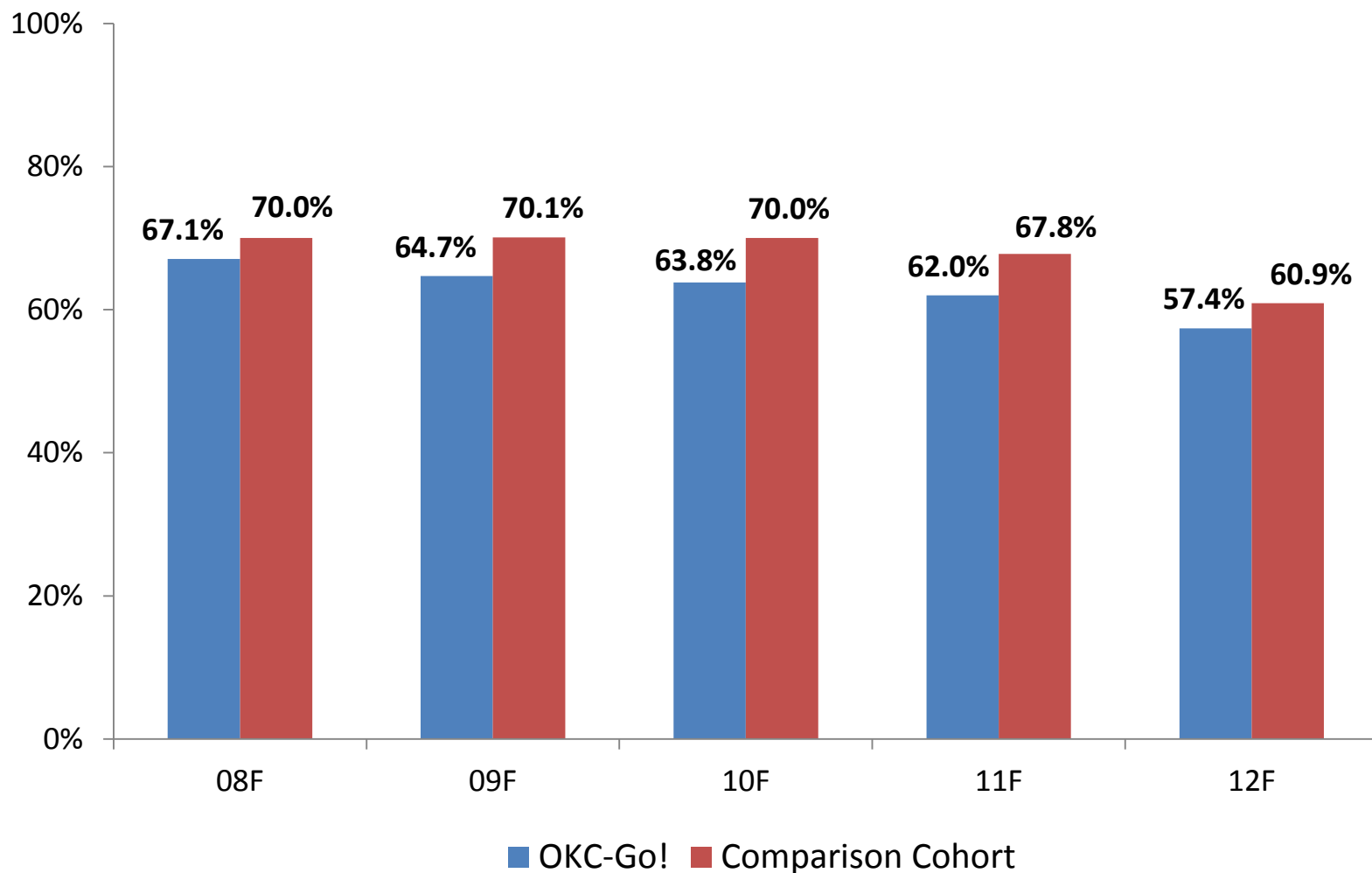


# Composition of OKC-Go! Course Load

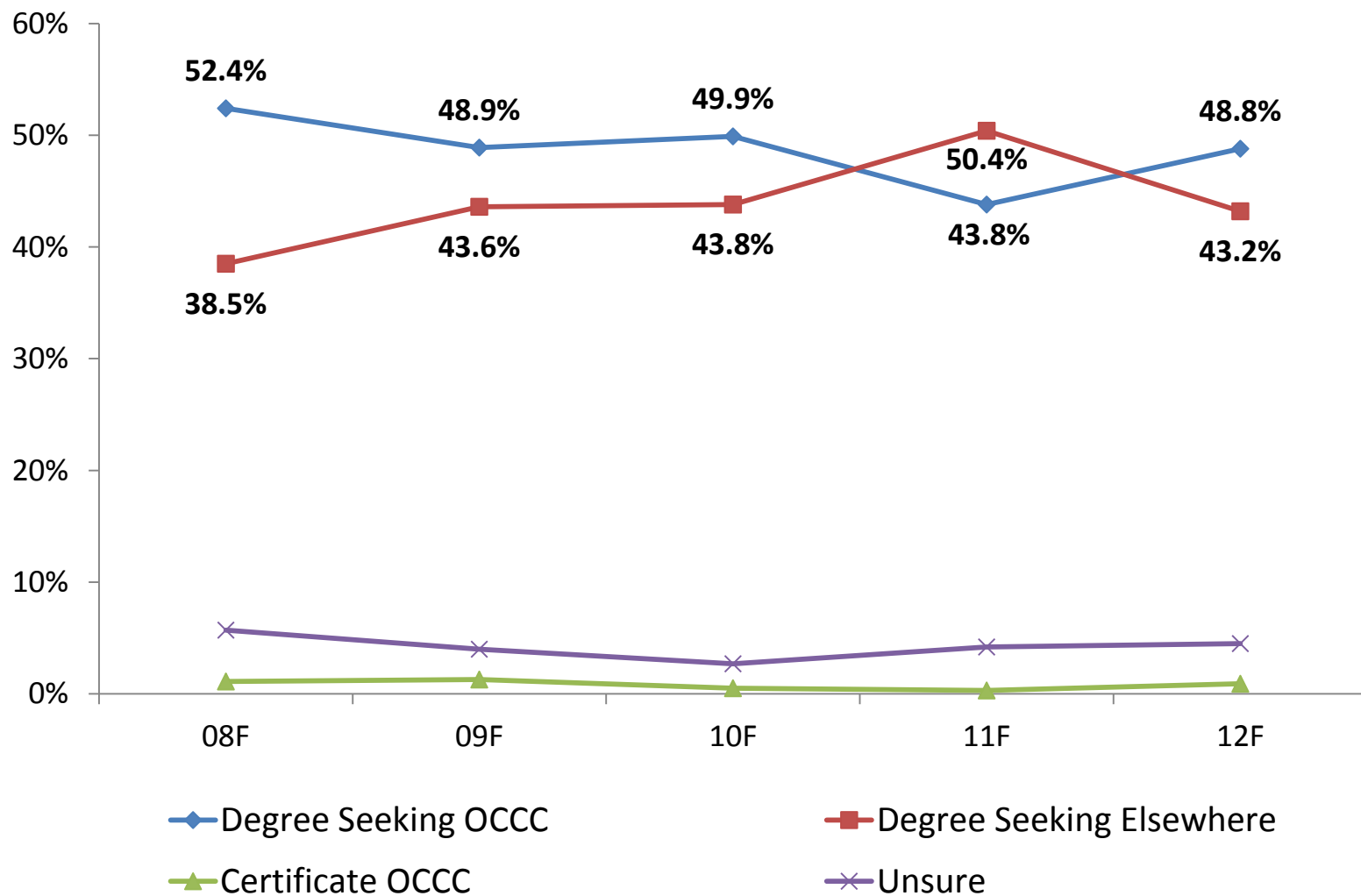


# Composition of OKC-Go! & Comparison Cohort

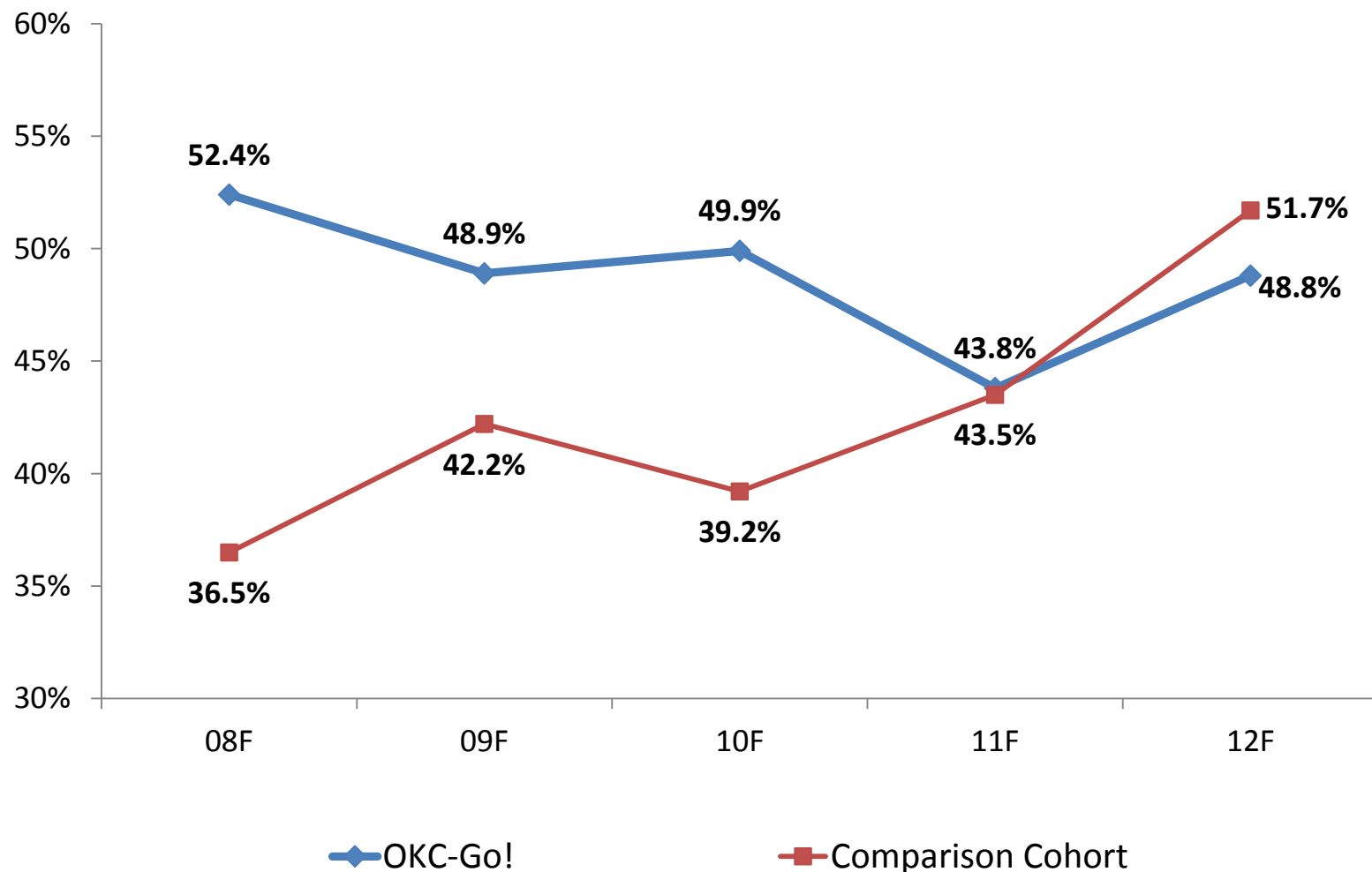
## Course Load – Full-Time



# Composition of OKC-Go! Educational Goal

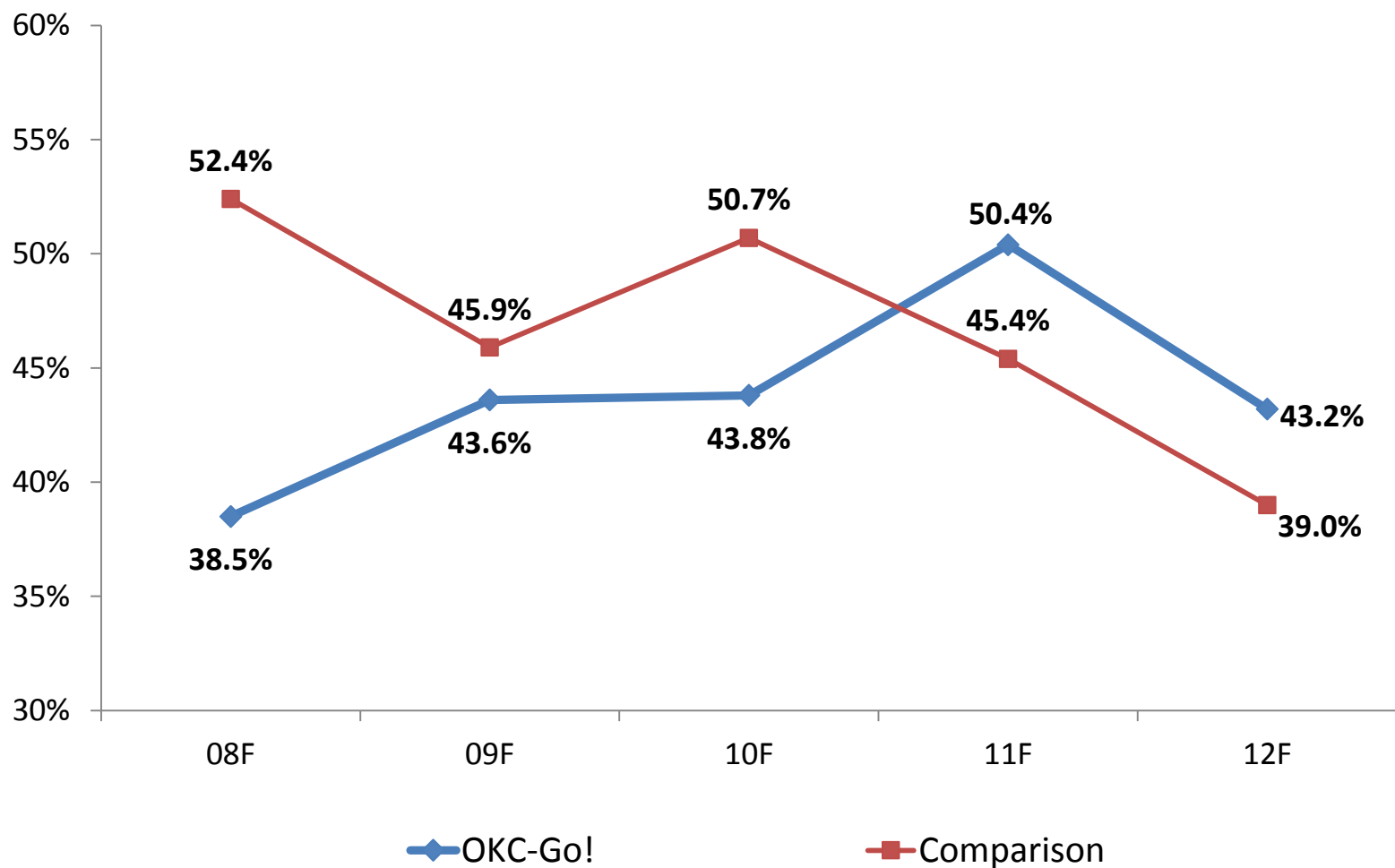


# Composition of OKC-Go! & Comparative Cohort Educational Goal – Degree Seeking at OCCC

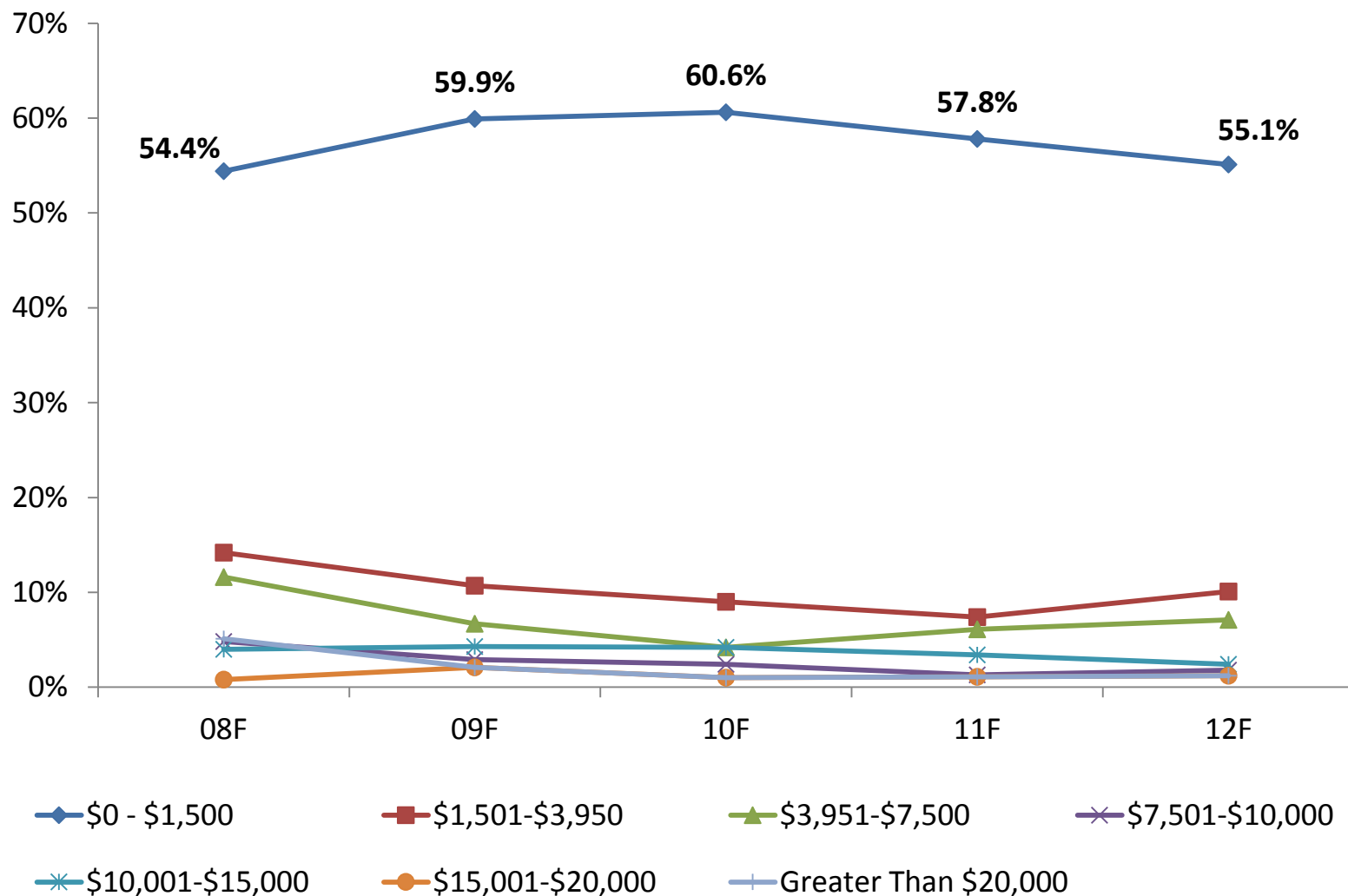




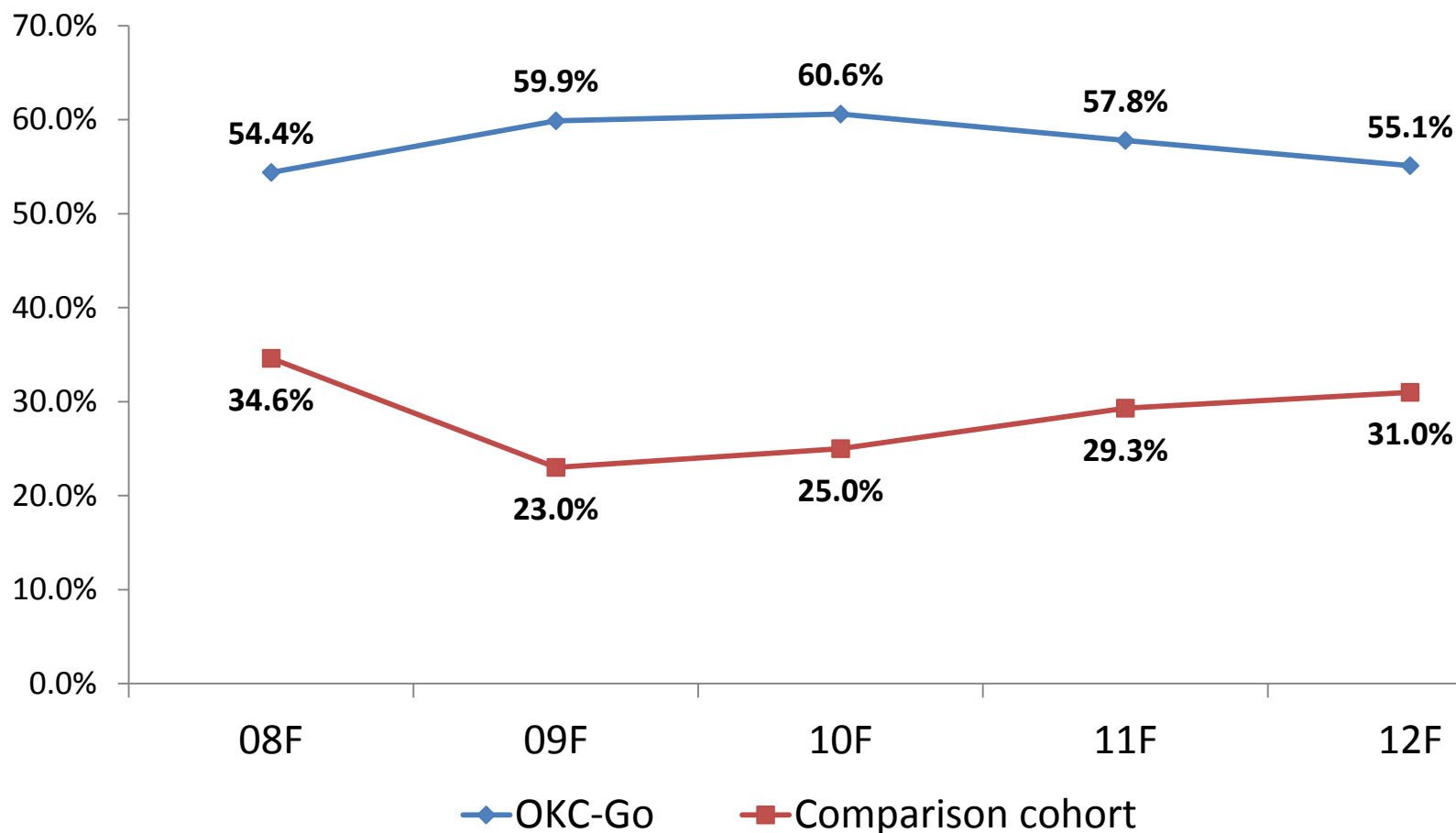
# Composition of OKC-Go! & Comparative Cohort Educational Goal – Degree Seeking Elsewhere



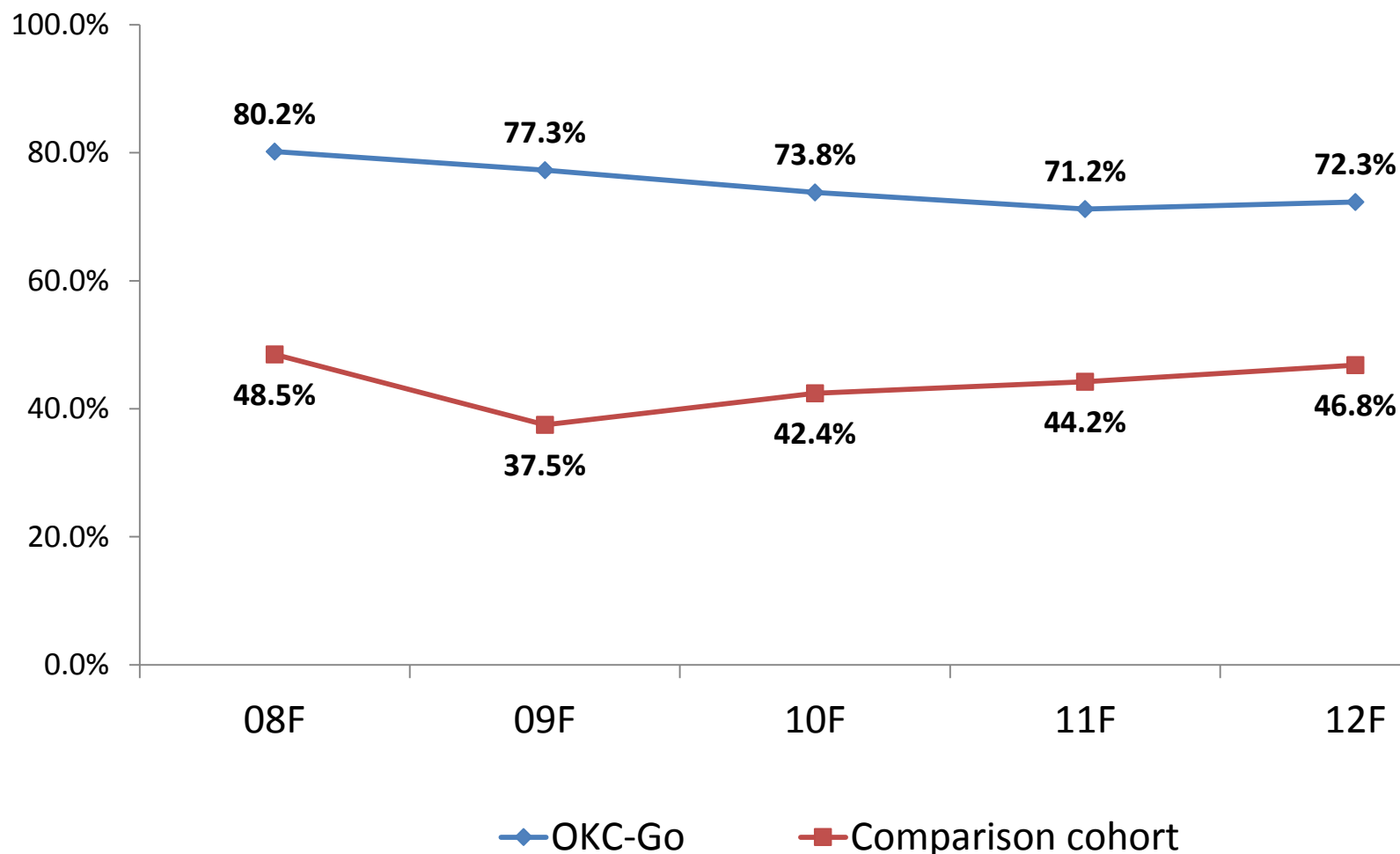
# Composition of OKC-Go! Expected Family Contribution



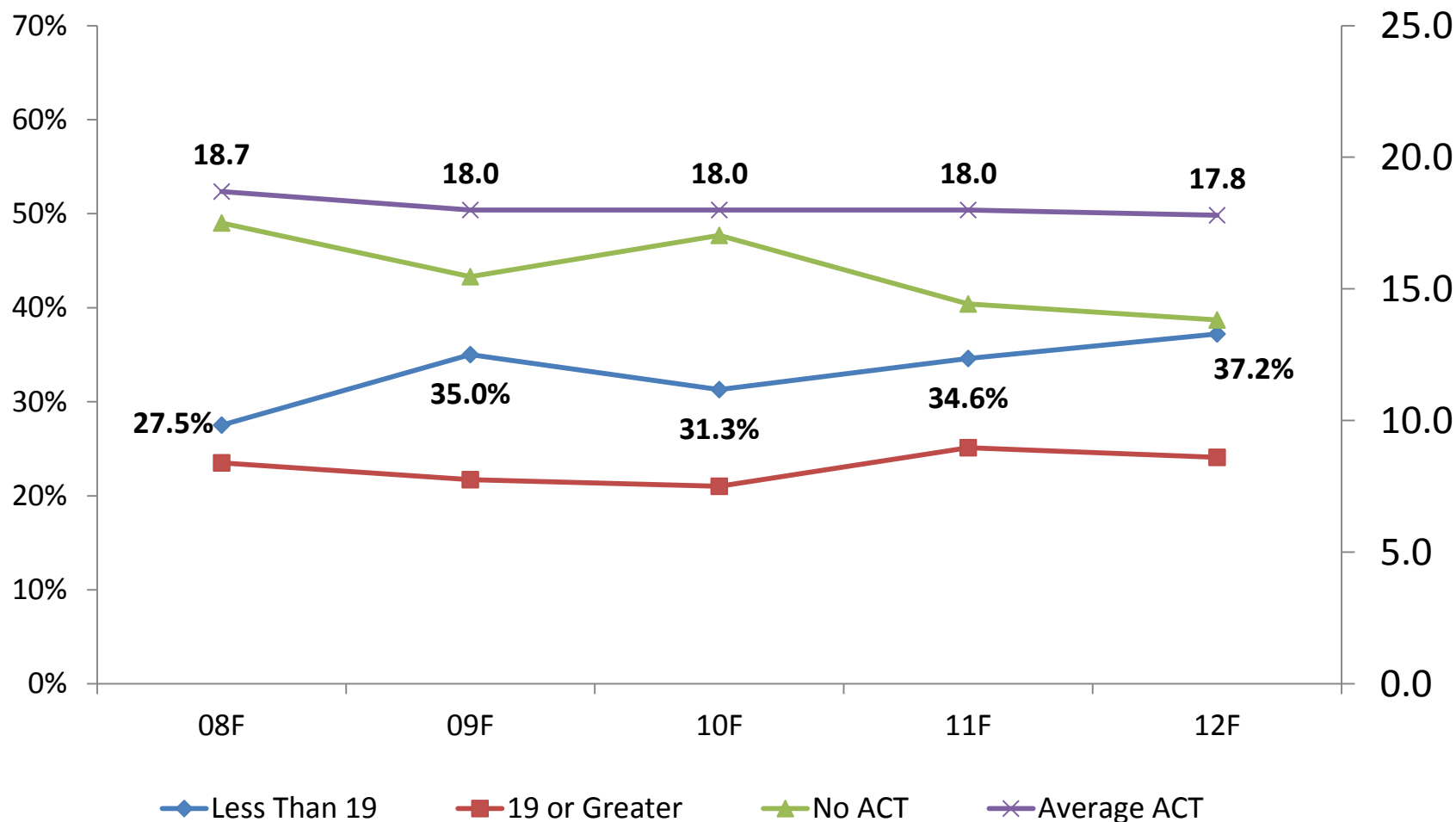
# Composition of OKC-Go! & Comparison Cohort Expected Family Contribution – \$0 to \$1,500



# Composition of OKC-Go! & Comparison Cohort Expected Family Contribution – Below \$7,500

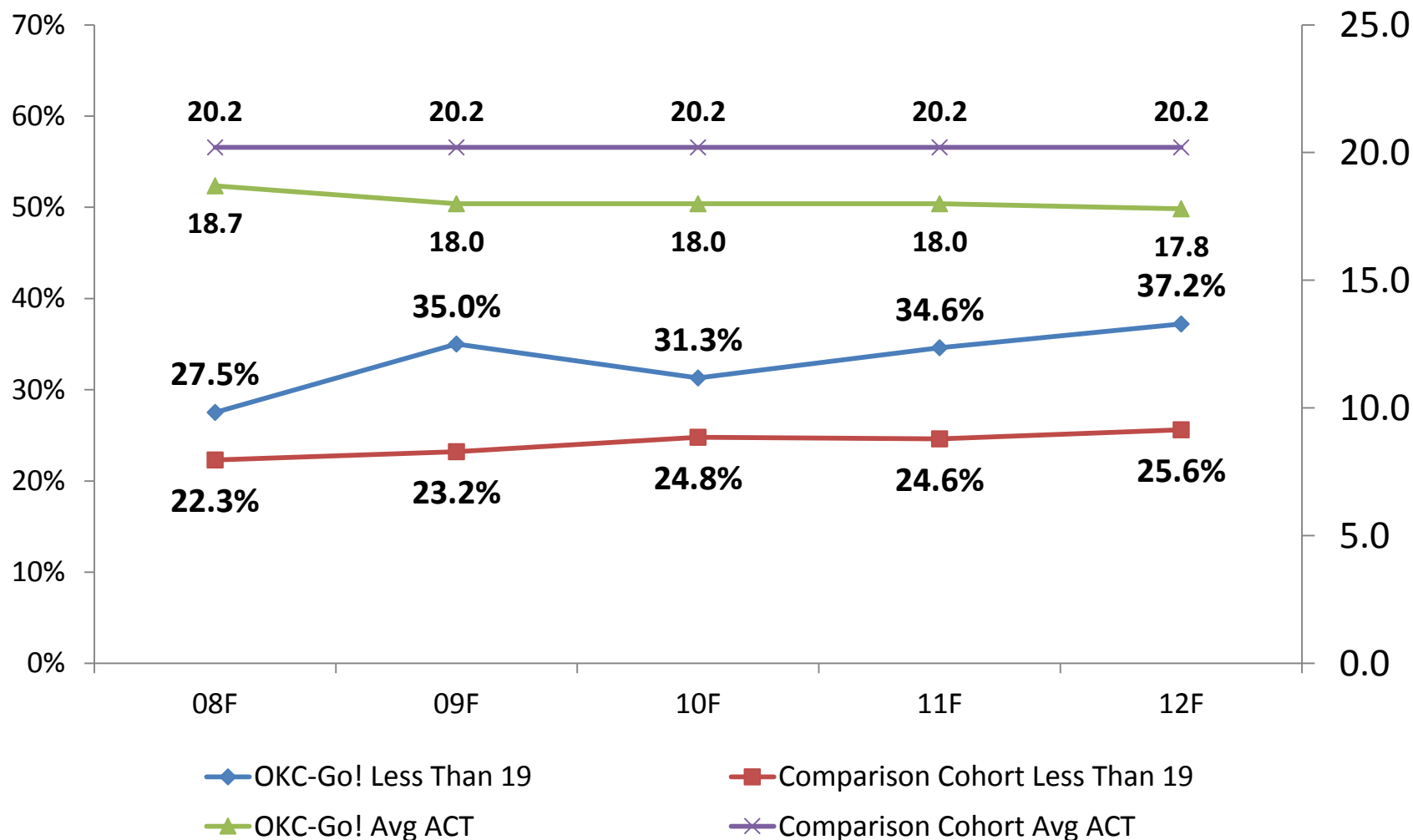


# Composition of OKC-Go! Composite ACT Score

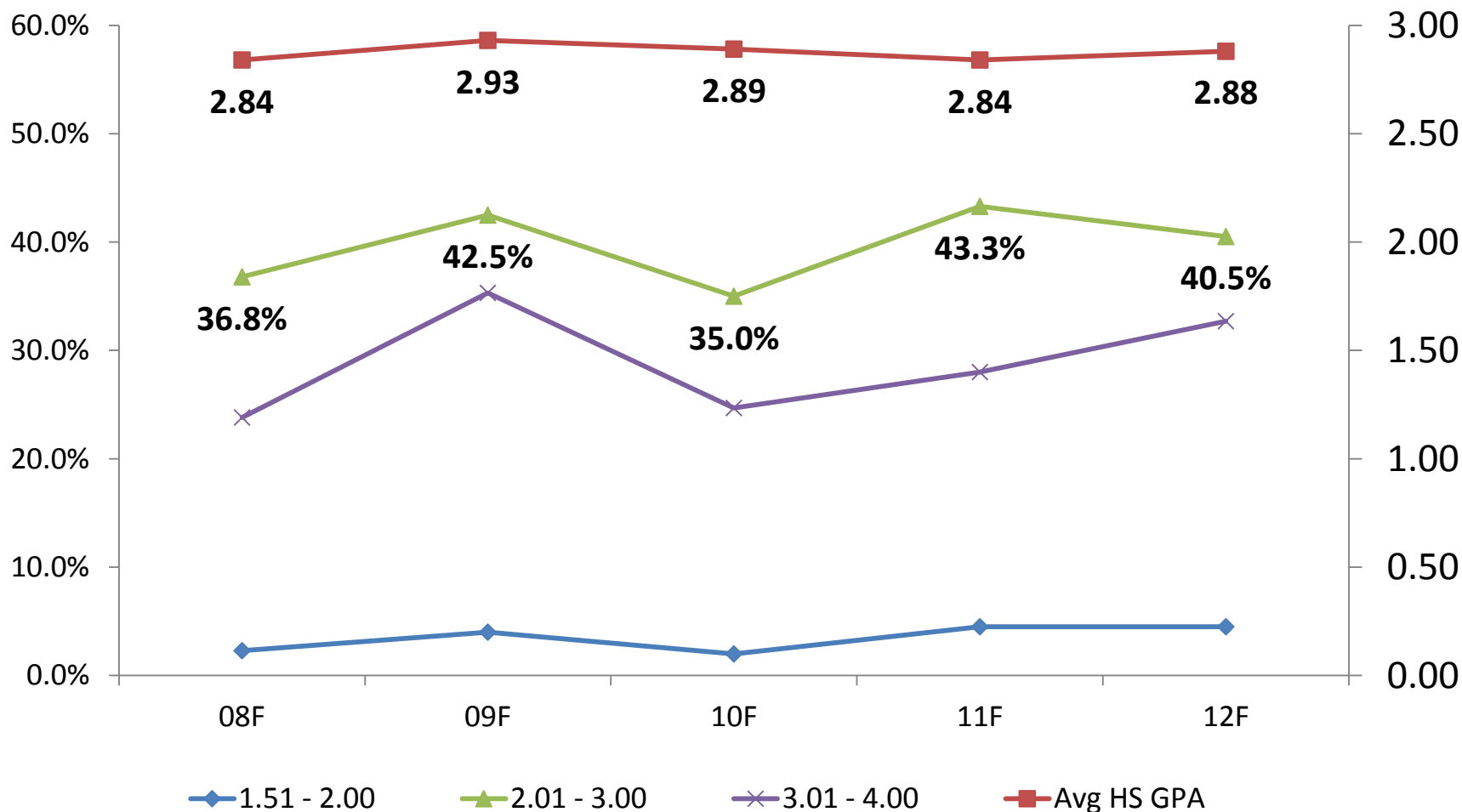


# Composition of OKC-Go! & Comparison Cohort

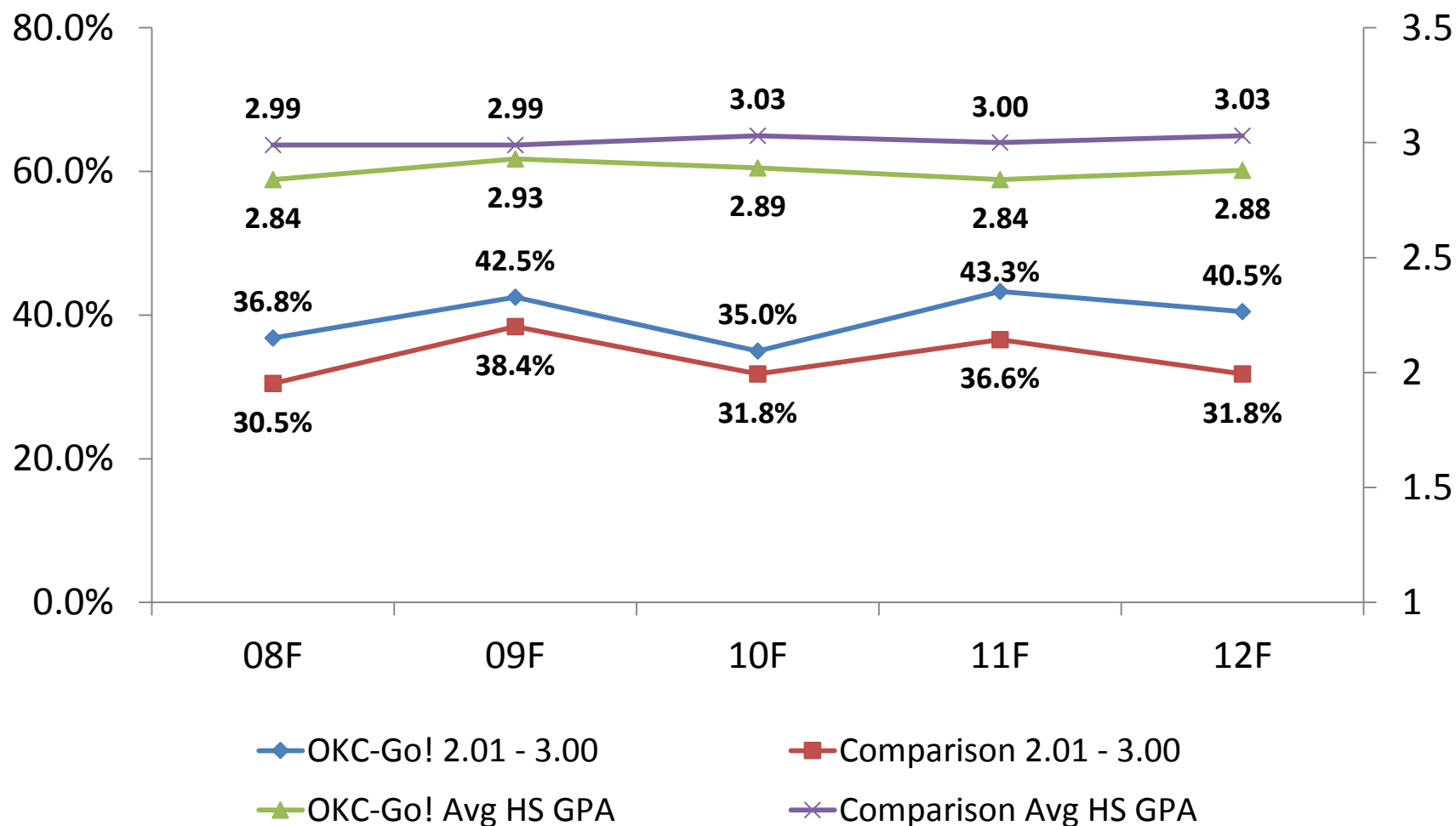
## Composite ACT Score of Less Than 19 & Average ACT



# Composition of OKC-Go! High School Grade Point



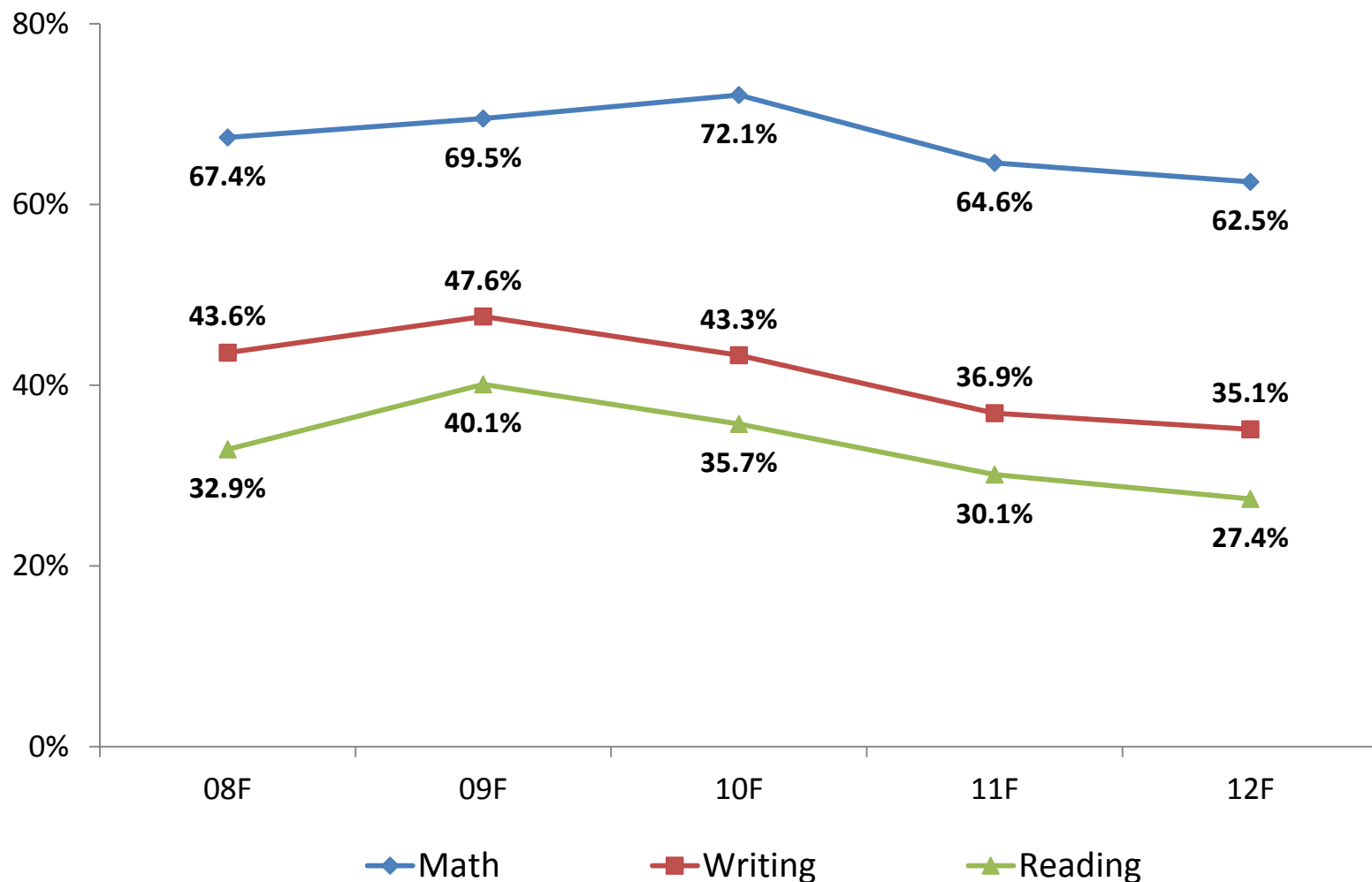
# Composition of OKC-Go! & Comparison Cohort High School Grade Point Average



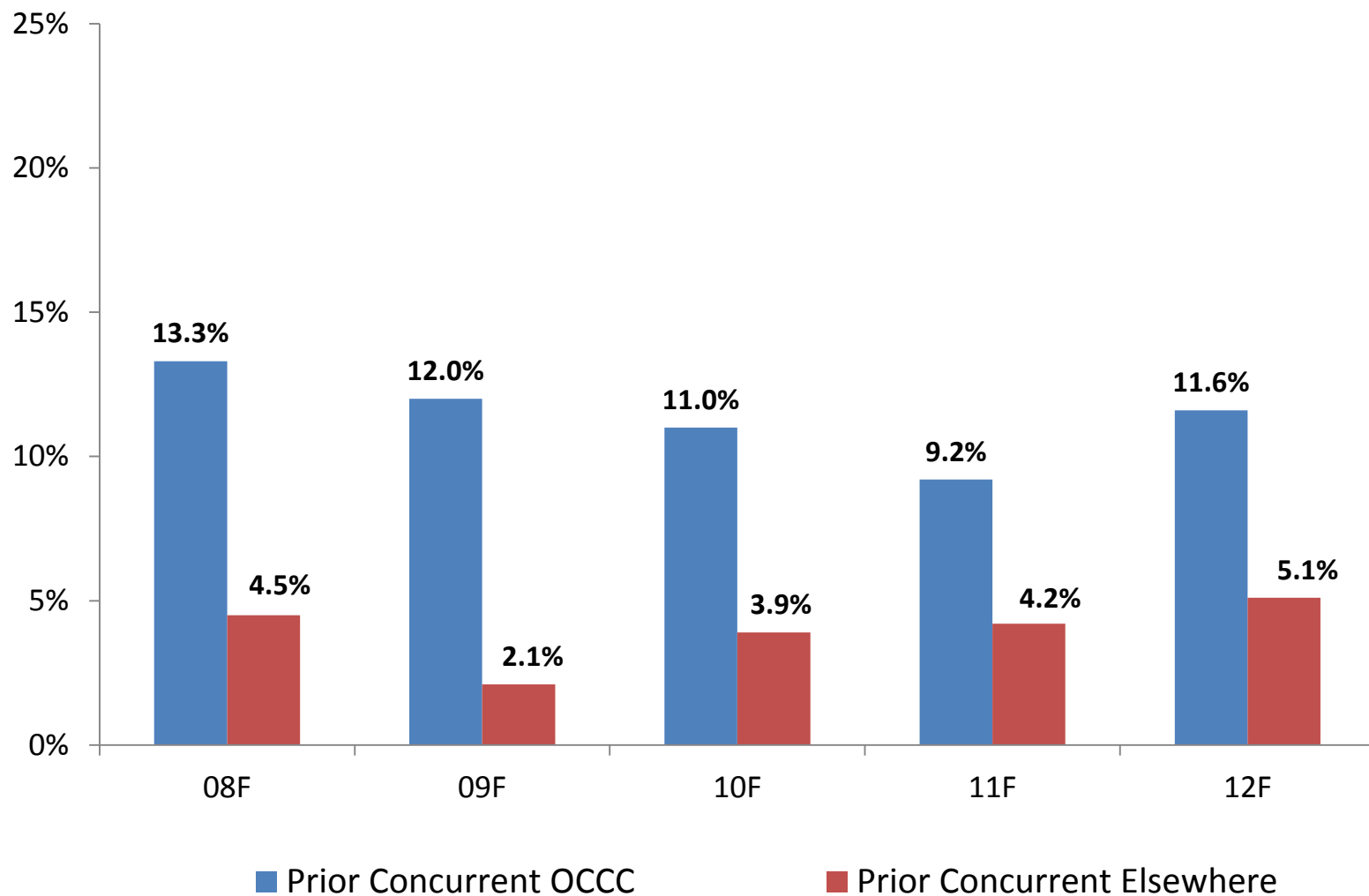


# Composition of OKC-Go!

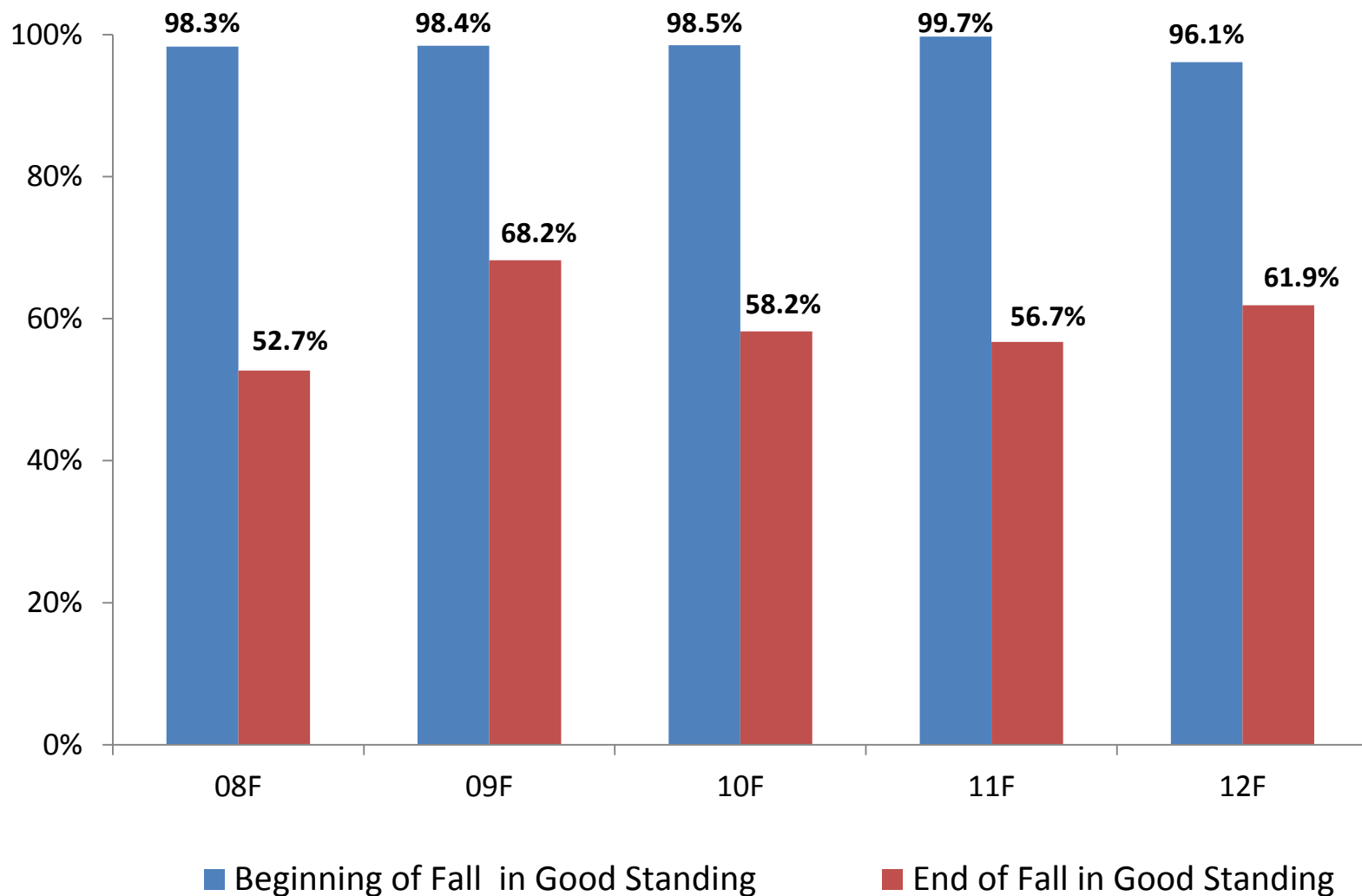
## Enrolled in Zero-Level Course by Subject Area



# Composition of OKC-Go! Prior Concurrent Status



# Composition of OKC-Go! Beginning Fall vs. Ending Fall Academic Status of Good Standing



## Composition of OKC-Go! & Comparison Cohort

	OKC-GO! COHORT	COMPARISON COHORT
GENDER	12F – 58.0%	12F – 50.7%
ETHNICITY/RACE	Higher percentage of Hispanic/ Latino and Black/ African American	Higher percentage of white
COURSE LOAD	12F – 57.4%; Continuous decline	12F – 60.9%; Decline seen in last 2 cohorts
EDUCATIONAL GOAL	12F – 48.8% degree-seeking at OCCC; 43.2% degree –seeking Elsewhere	12F – 51.7% degree-seeking at OCCC; 39.0% degree-seeking Elsewhere
Expected Family Contribution	12F – 55.1% in lowest EFC and 72.3% in EFC less than \$7,500	12F – 31.0% in lowest EFC and 46.8% in EFC less than \$7,500
Composite ACT	12F – 17.8 average and 37.2% with ACT less than 19	12F – 20.2 average and 25.6% with ACT less than 19

# Composition of OKC-Go! & Comparison Cohort

	OKC-GO! COHORT	COMPARISON COHORT
HIGH SCHOOL GPA	12F – 2.88 average and 40.5% have GPA between 2.01 and 3.00	12F – 3.03 average and 31.8% have GPA between 2.01 and 3.00
Enrolled in at least 1 Zero-Level Course	12F – 70.2% in at least 1 zero-level courses	12F – 43.0% in at least 1 zero-level courses
Enrolled in Zero-Level Math	12F – 62.5%;	12F – 38.6%;
Enrolled in Zero-Level Reading	12F – 27.4%	12F – 10.9%
Enrolled in Zero-Level Writing	12F – 35.1%	12F – 17.4%
Enrolled in Success in College & Life	12F – 47.0%; 56.3% successful	12F – 40.5%; 68.8% successful

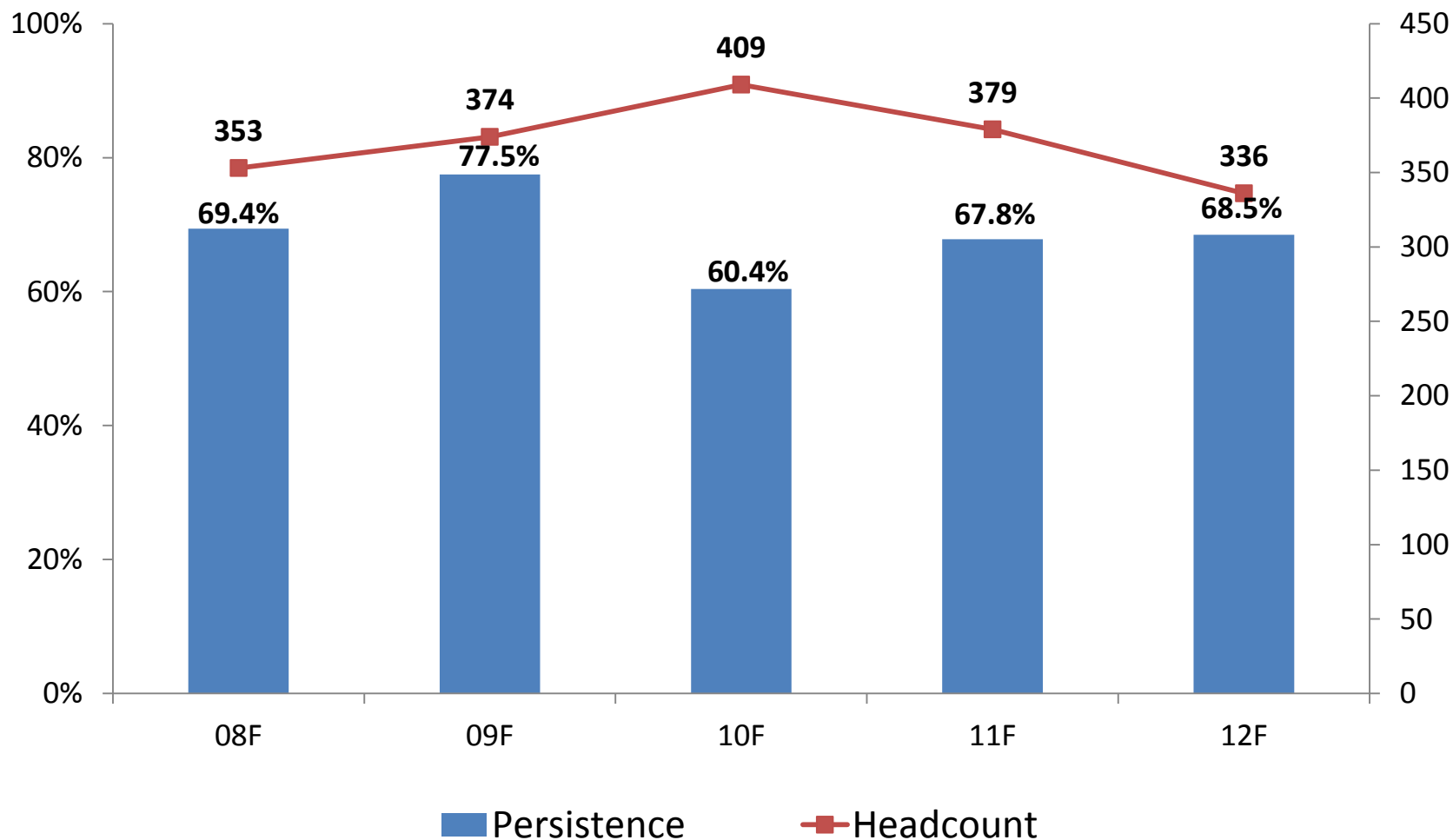
## Composition of OKC-Go! & Comparison Cohort

CATEGORY	OKC-GO! COHORT	COMPARISON COHORT
Prior Concurrent at OCCC	12F – 11.6%	12F – 21.9%
Prior Concurrent Elsewhere	12F – 5.1%	12F – 5.1%

# PERSISTENCE

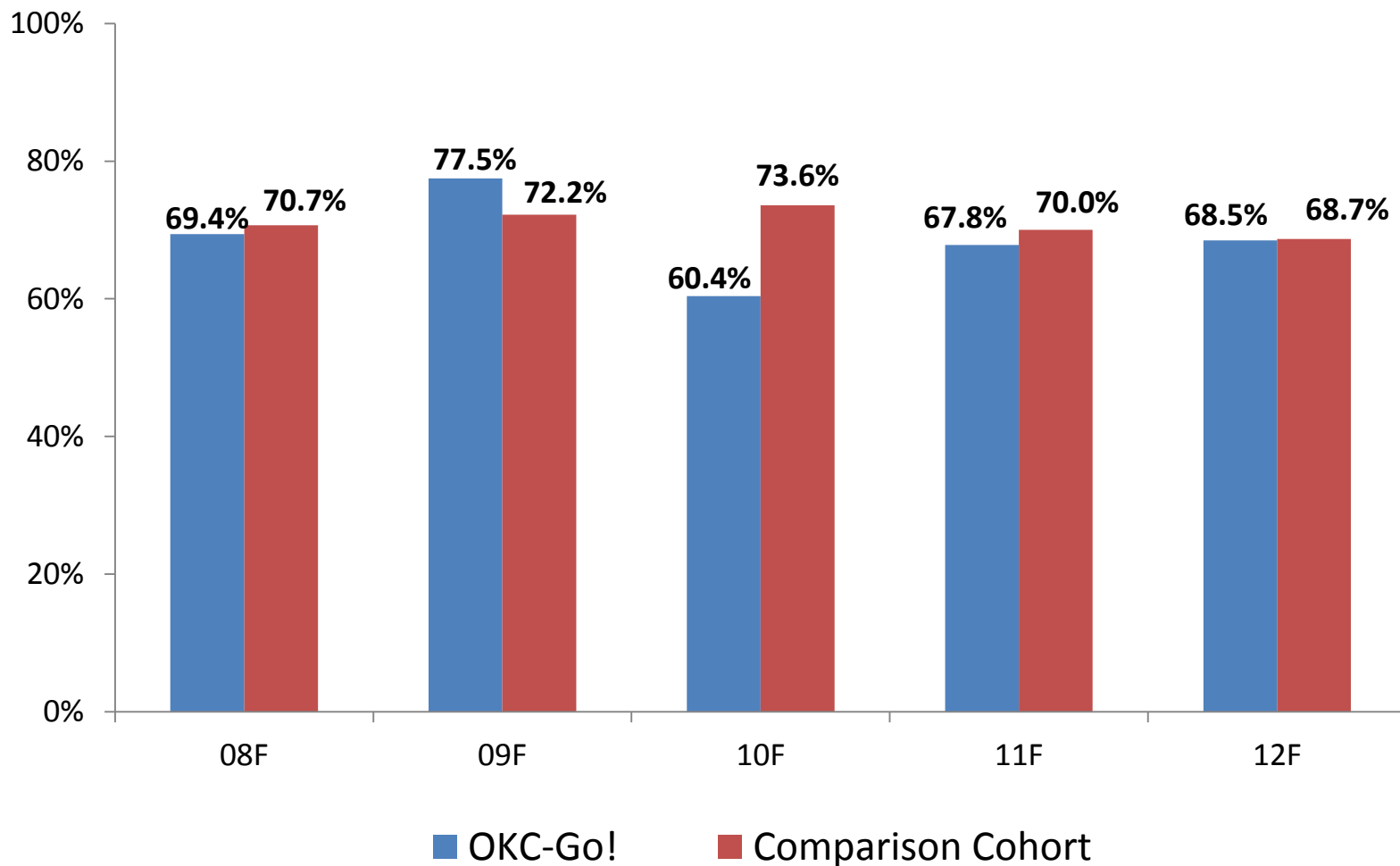
(FALL TO SPRING)

# Headcount of OKC-GO! Cohorts and Persistence to Subsequent Spring

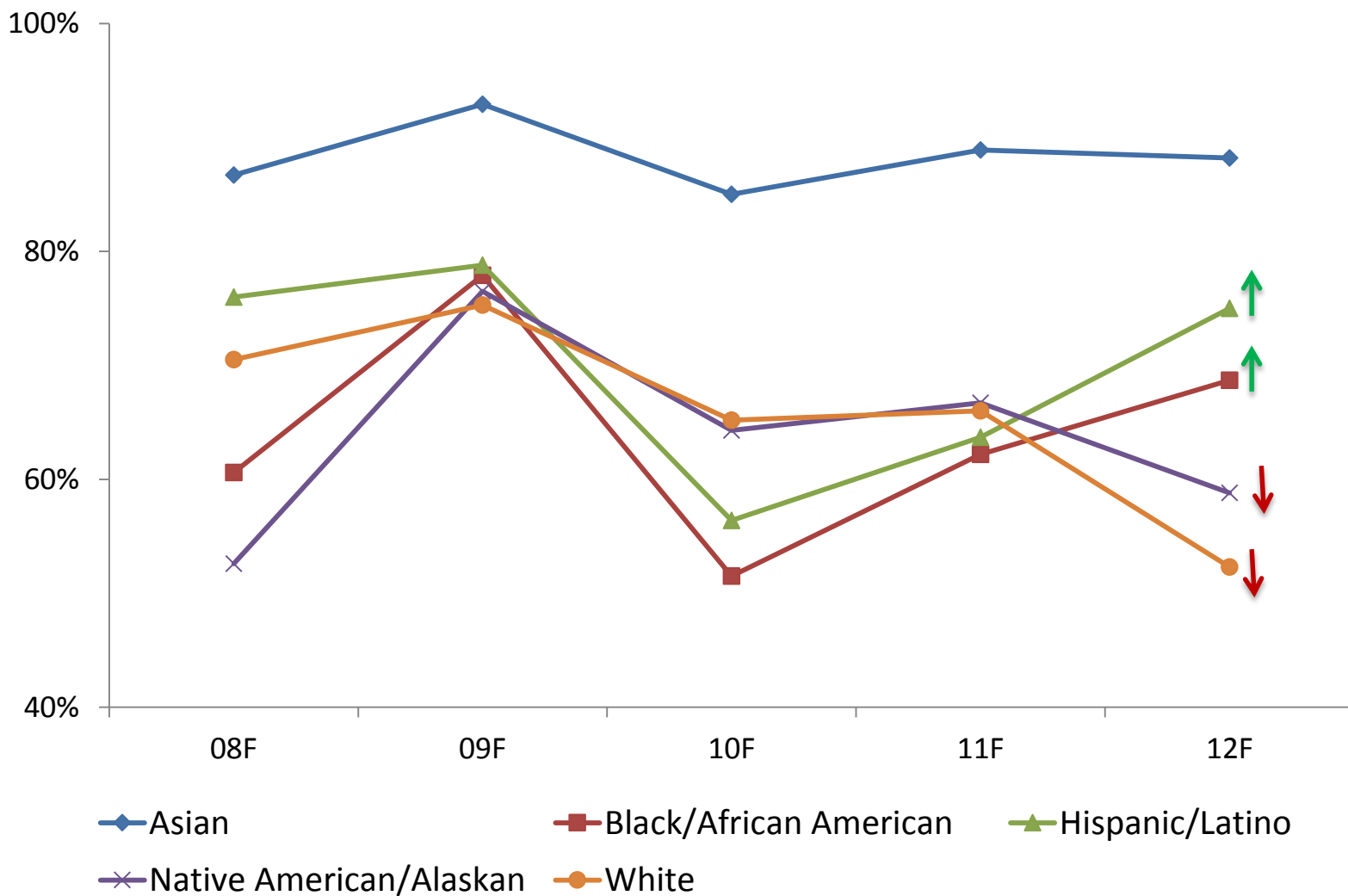




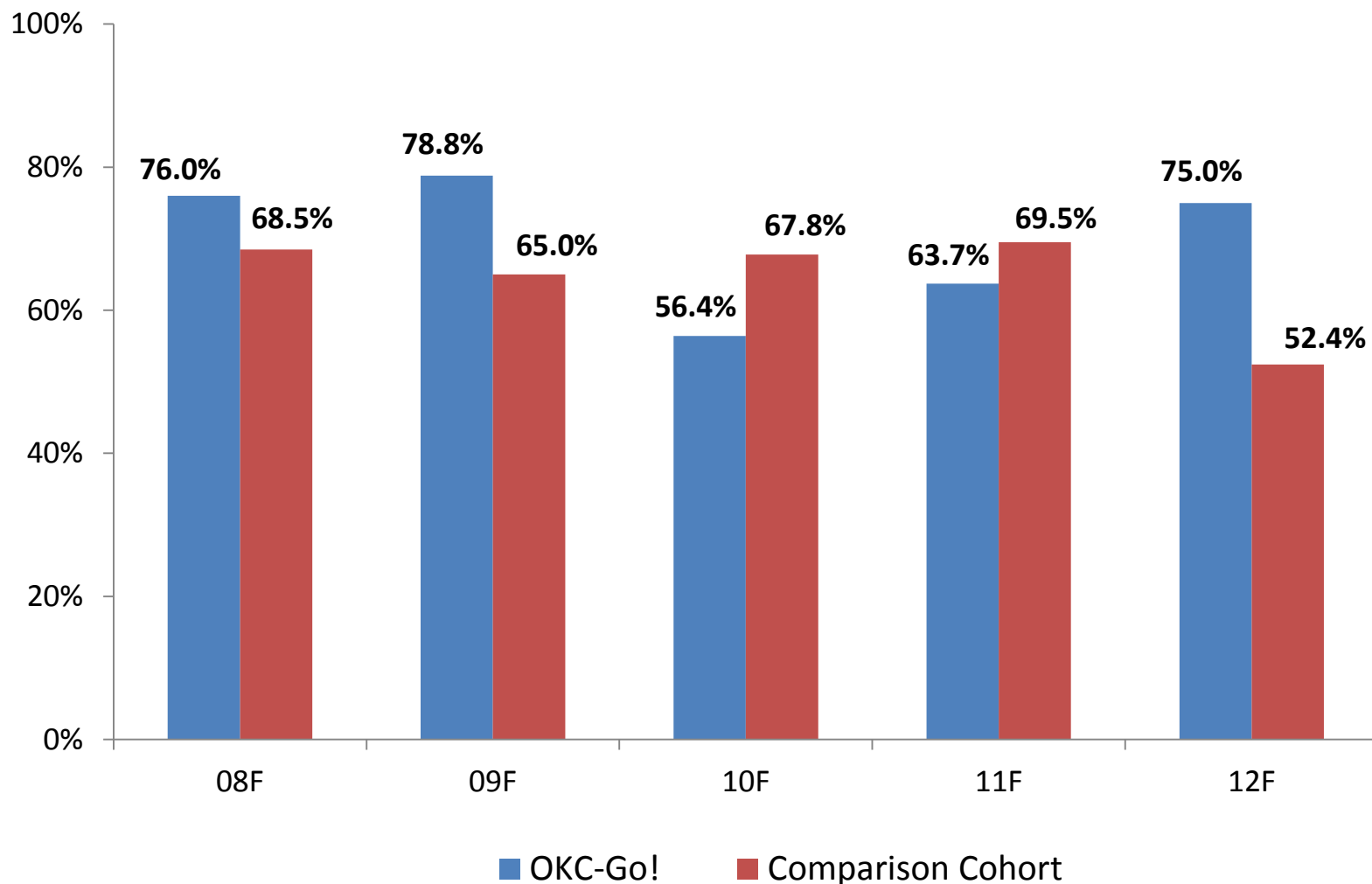
# OKC-Go! & Comparison Cohorts Persistence to Subsequent Spring



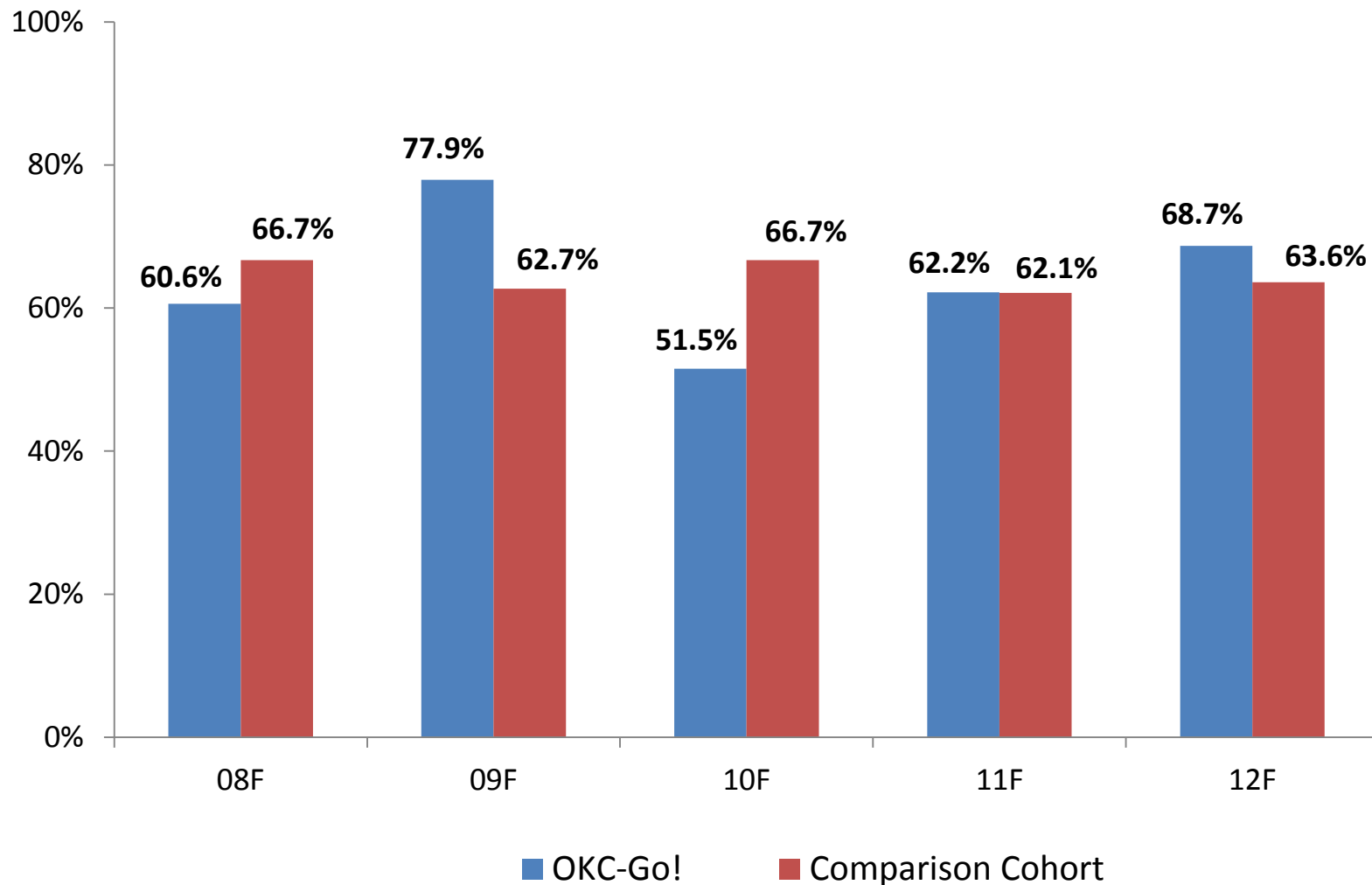
# Persistence of OKC-Go! Ethnicity/Race



# Persistence of OKC-Go! & Comparison Cohort Ethnicity/Race – Hispanic/Latino

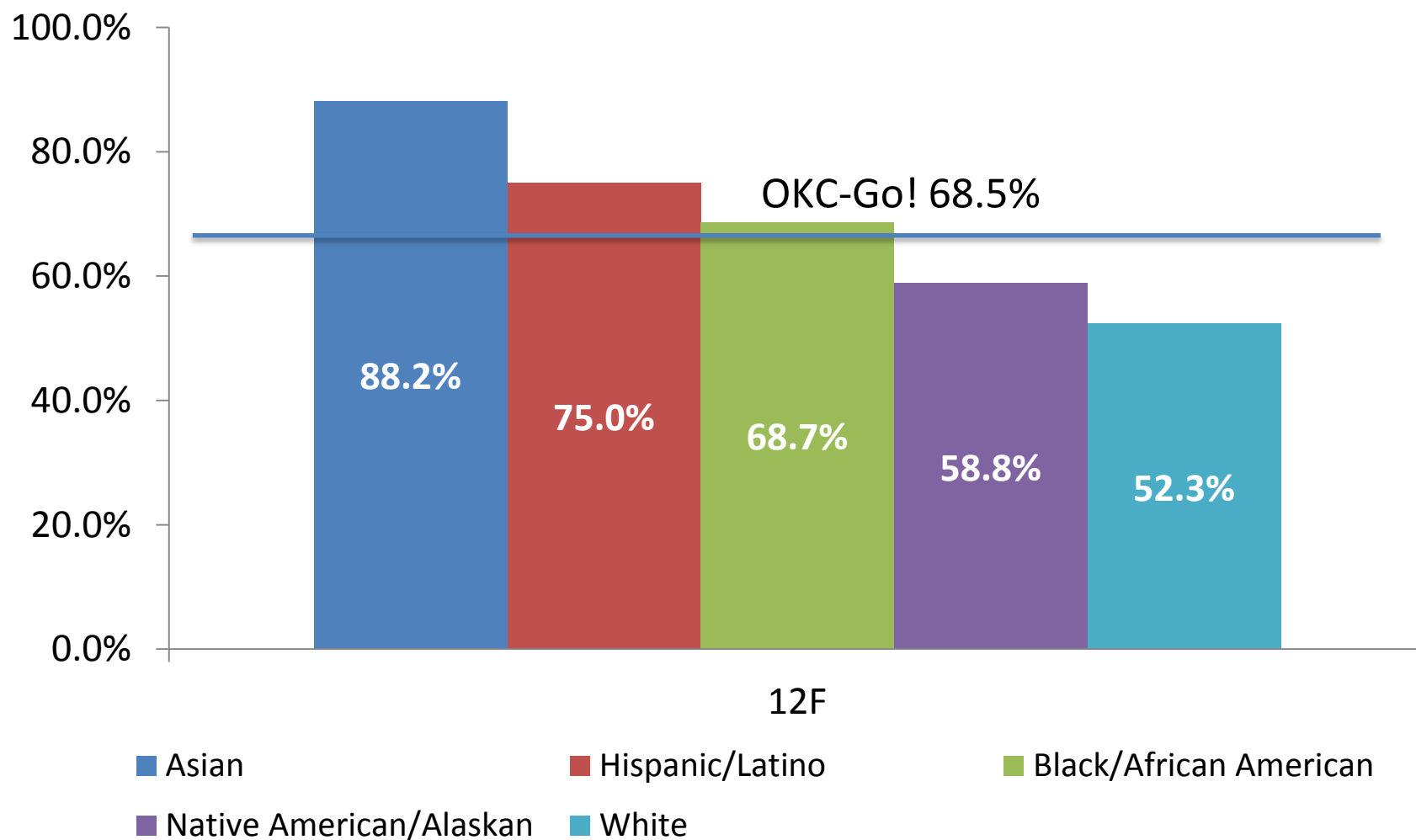


# Persistence of OKC-Go! & Comparison Cohort Ethnicity/Race – Black/African American

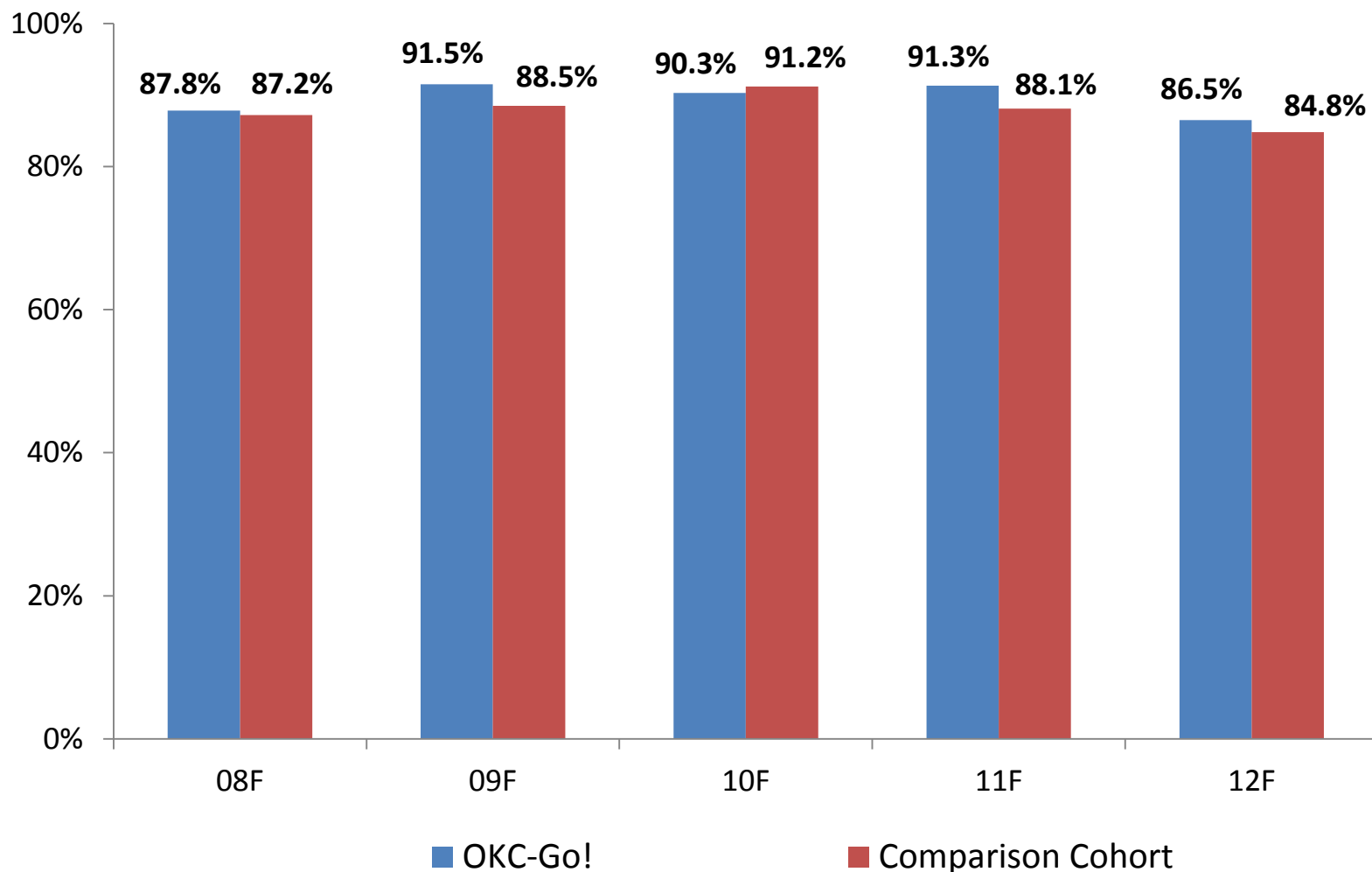


# Persistence of OKC-Go! Fall 2012

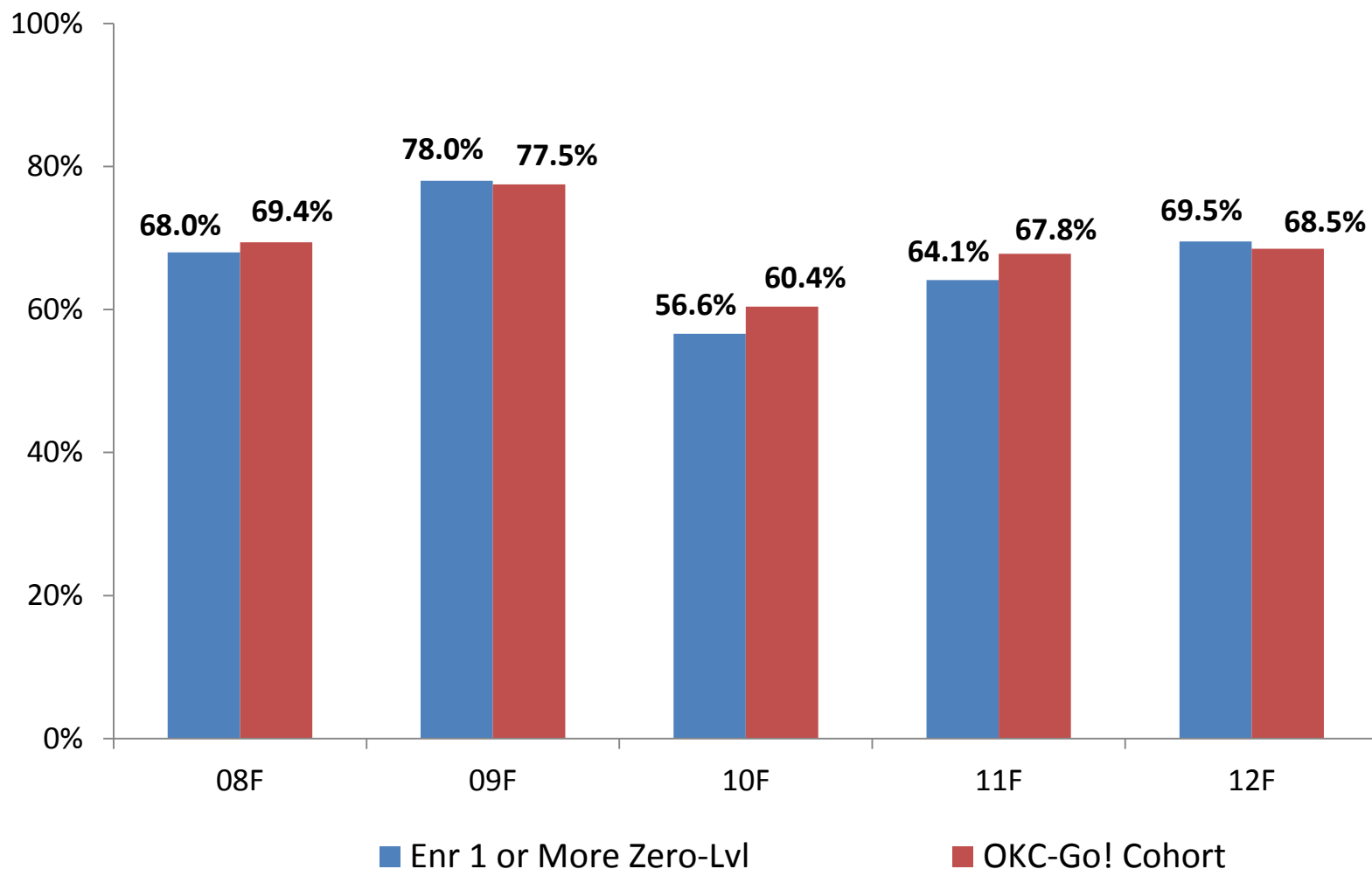
## Ethnicity/Race



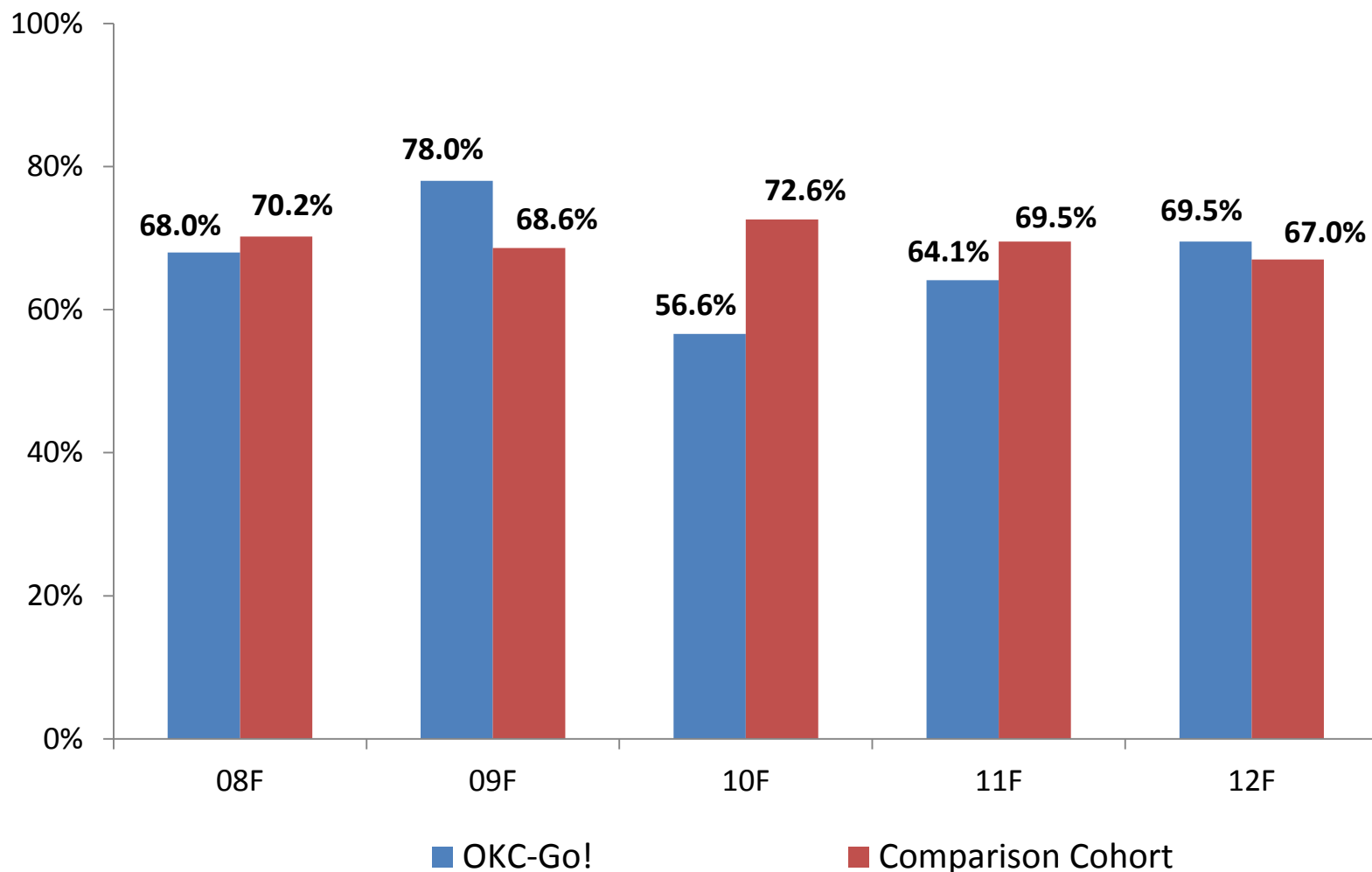
# Persistence of OKC-Go! & Comparison Cohort Successful in Success in College & Life – Fall Semester



# Persistence of OKC-Go! Enrolled in One or More Zero-Level Courses

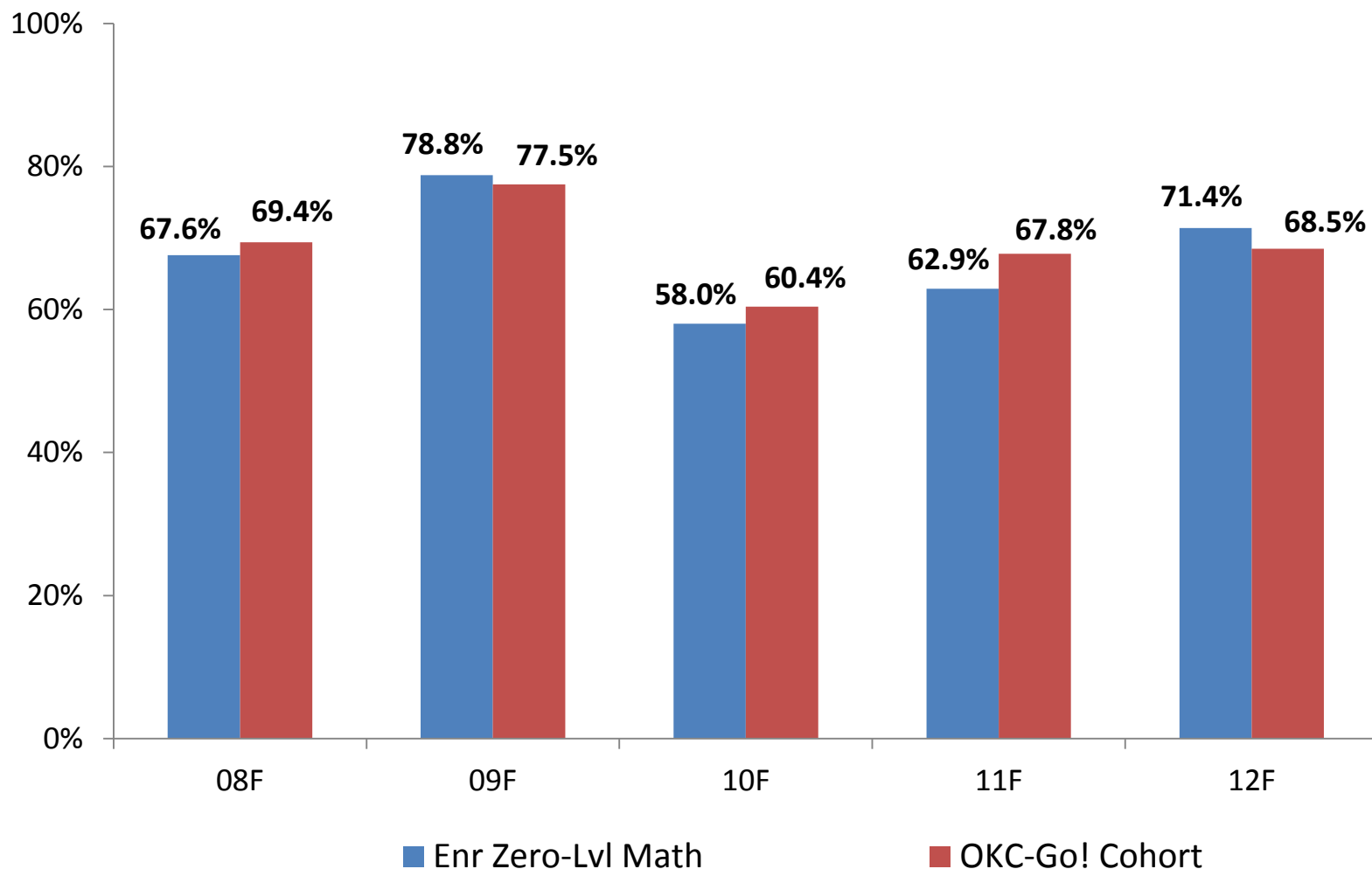


# Persistence of OKC-Go! & Comparison Cohort Enrolled in One or More Zero-Level Courses

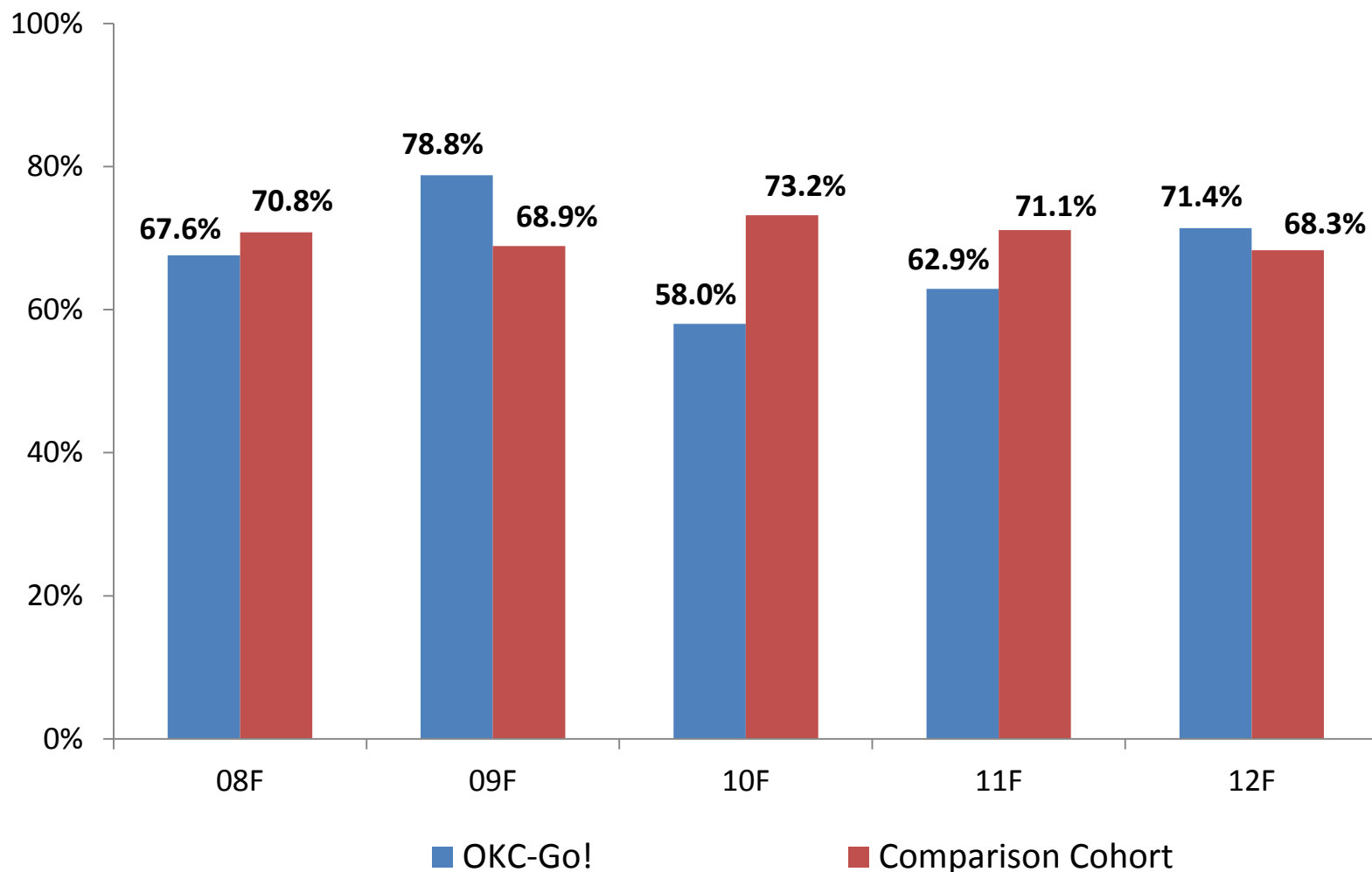




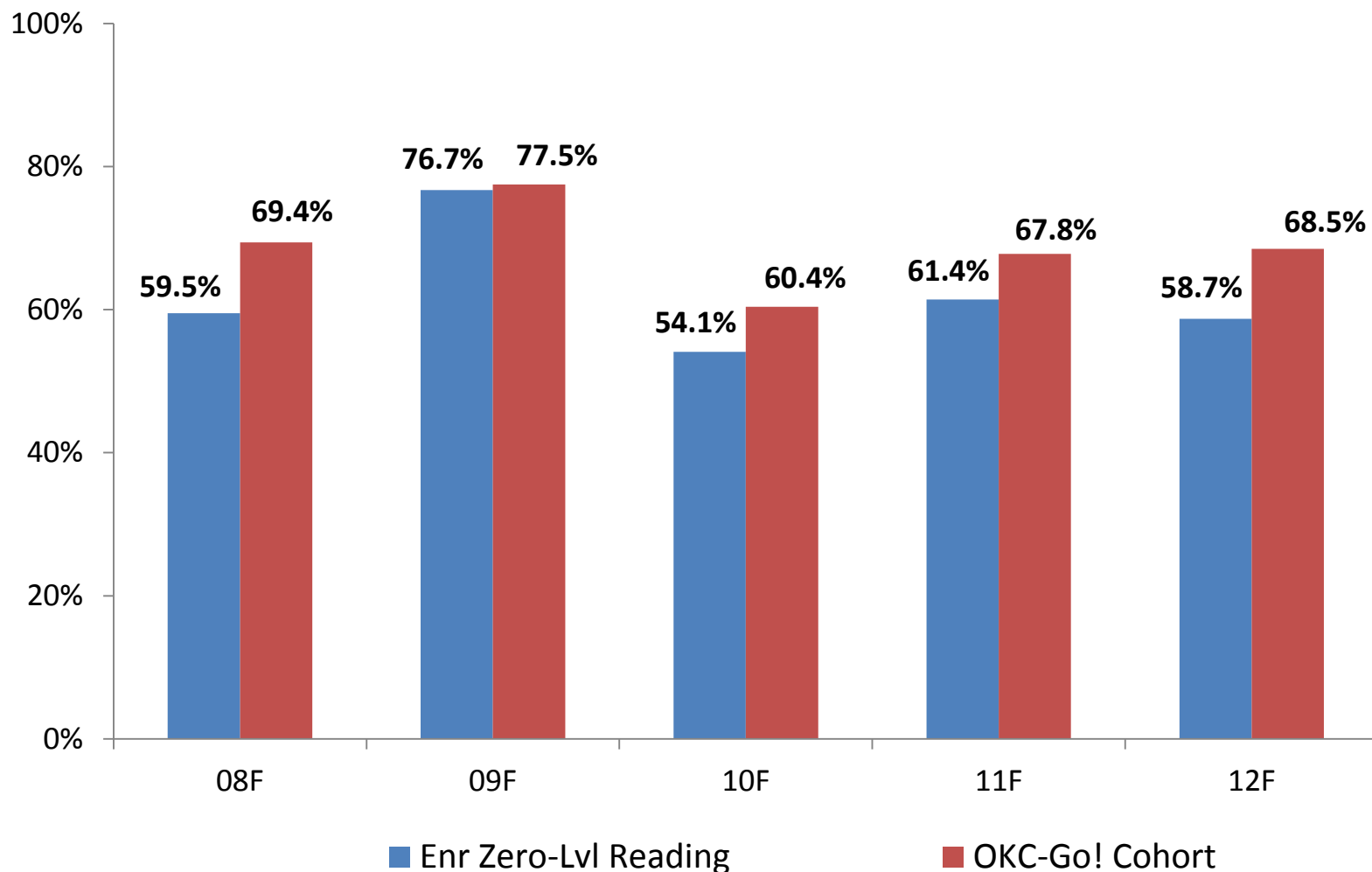
## Persistence of OKC-Go! Enrolled in Zero-Level Math Course



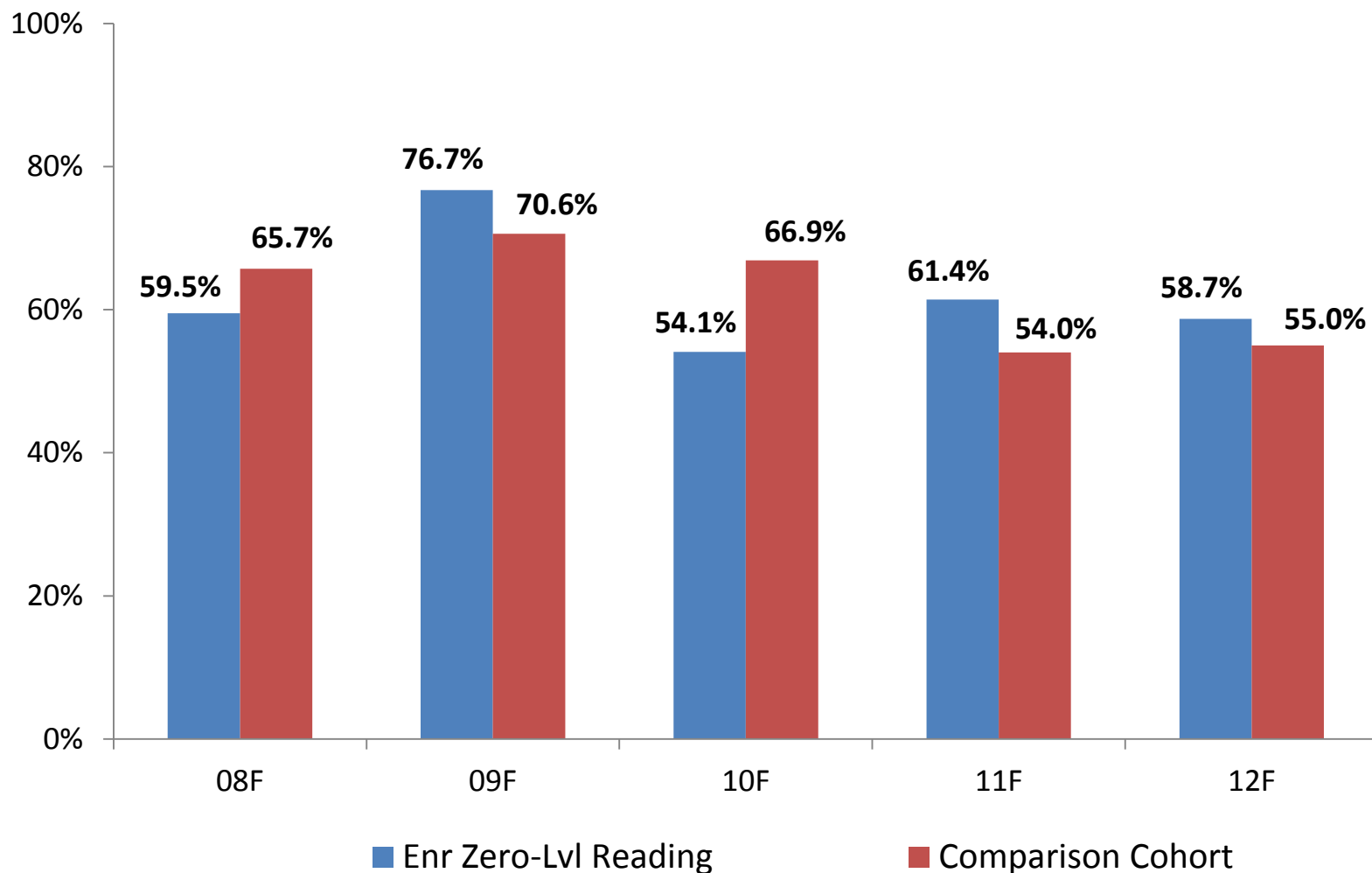
# Persistence of OKC-Go! & Comparison Cohort Enrolled in Zero-Level Math Course



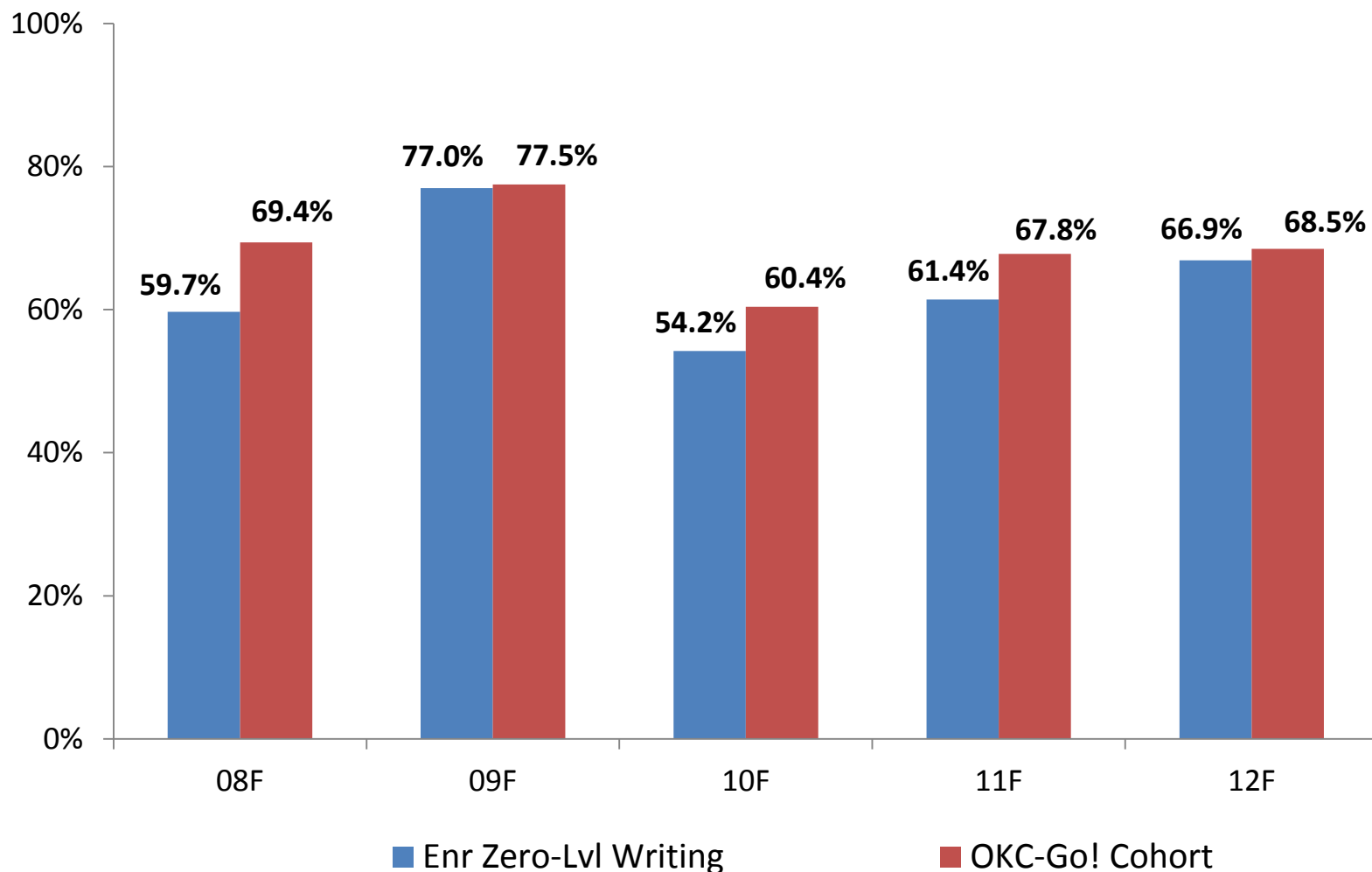
# Persistence of OKC-Go! Enrolled in Zero-Level Reading Course



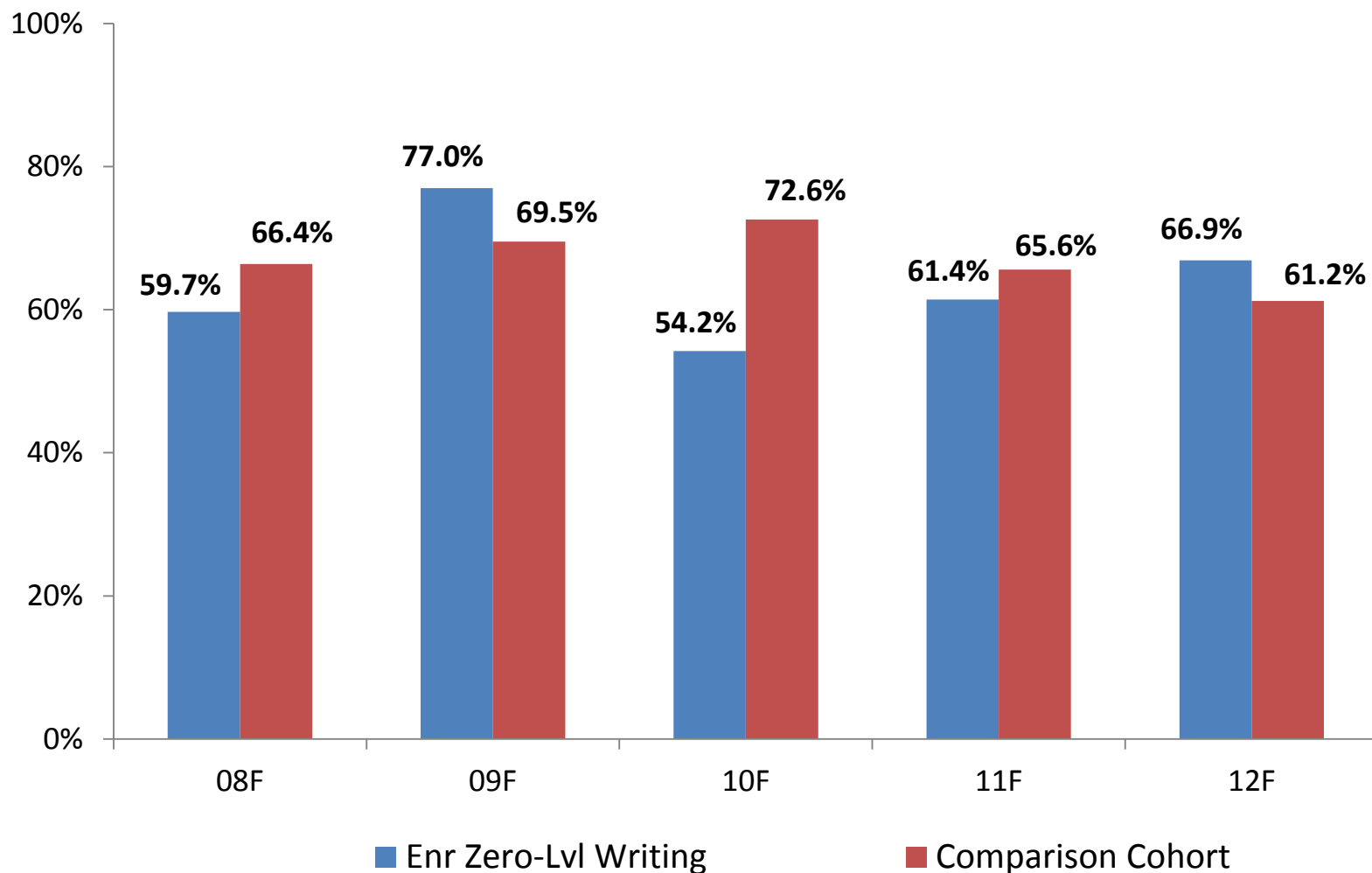
# Persistence of OKC-Go! & Comparison Cohort Enrolled in Zero-Level Reading Course



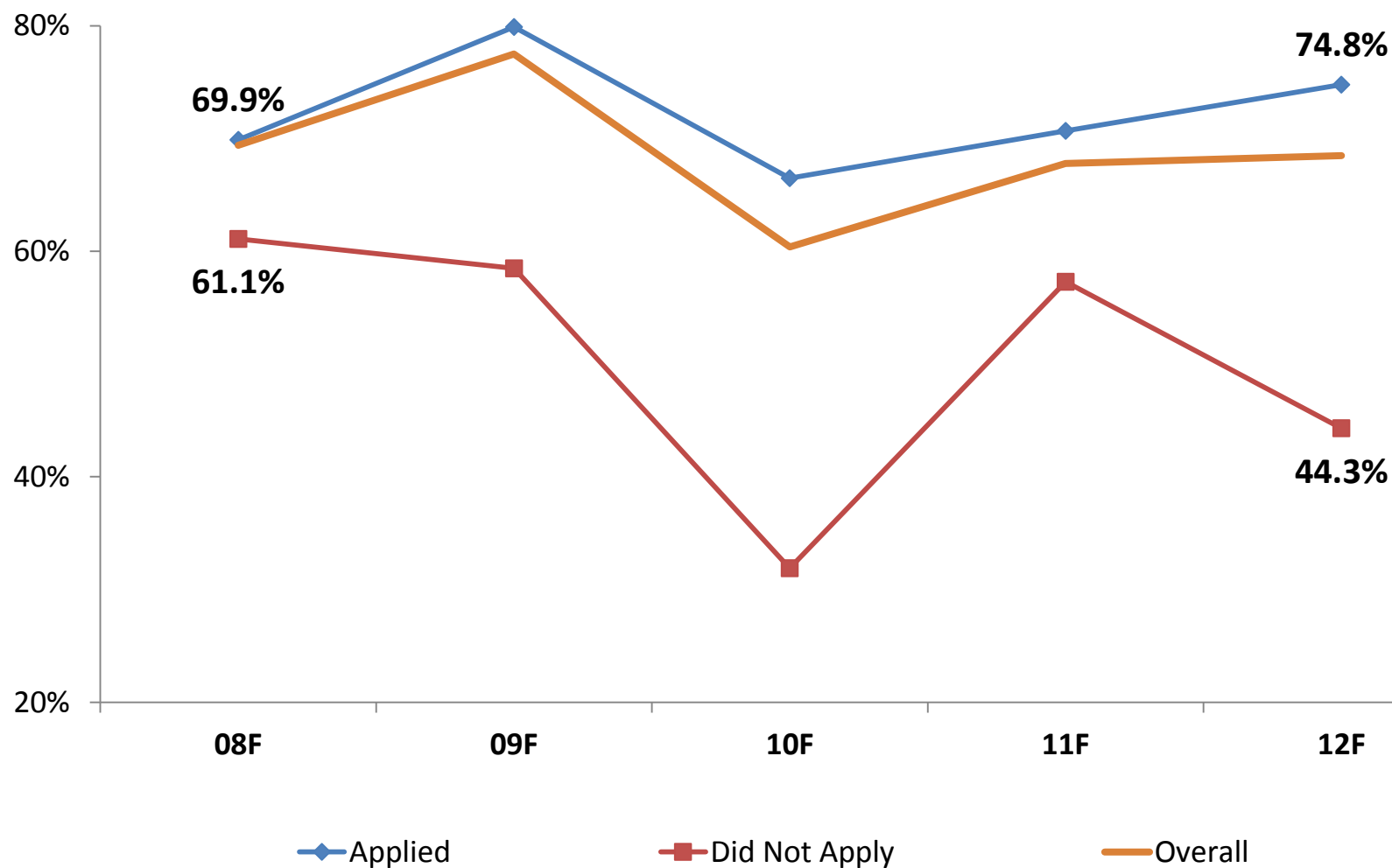
# Persistence of OKC-Go! Enrolled in Zero-Level Writing Course



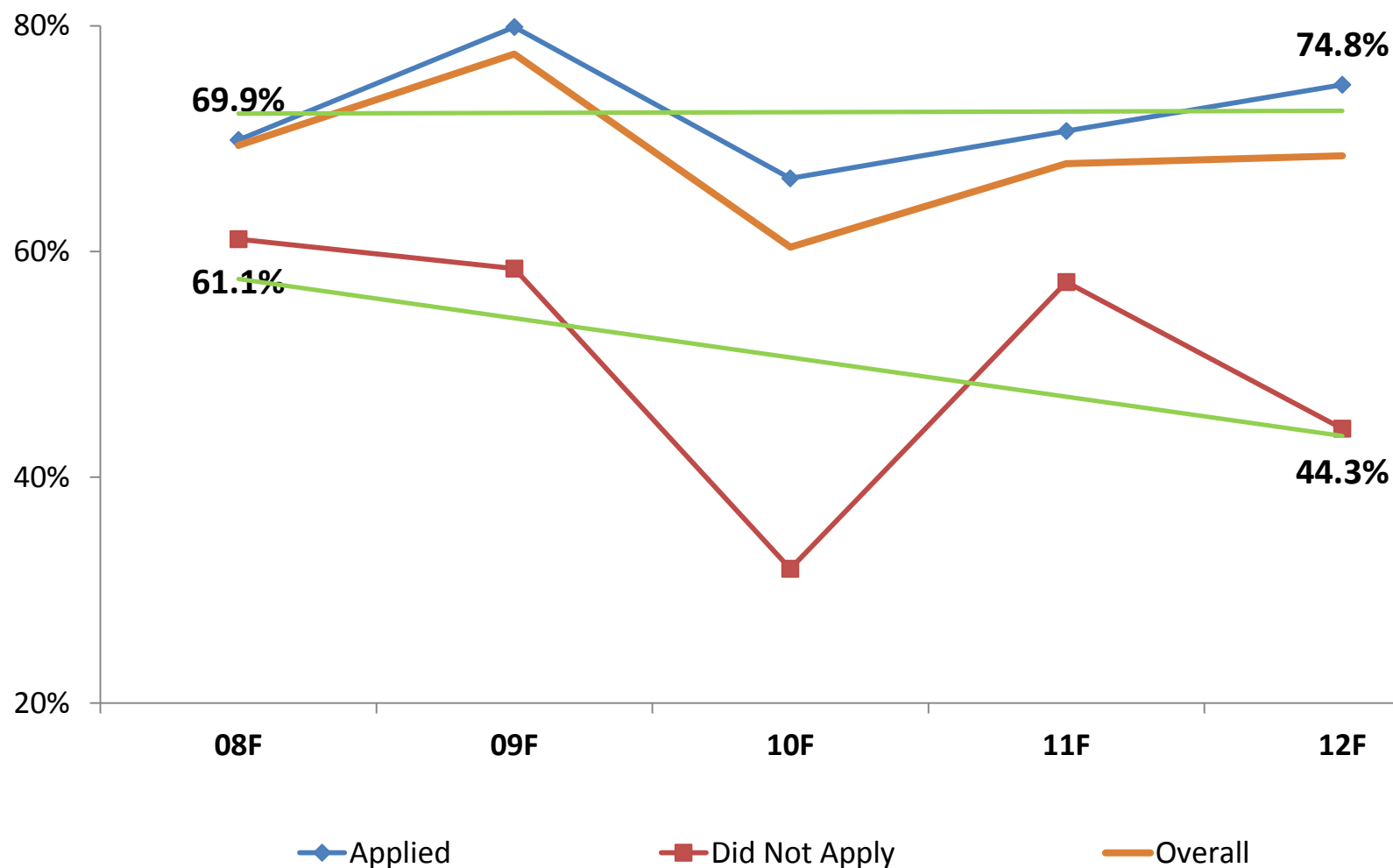
# Persistence of OKC-Go! & Comparison Cohort Enrolled in Zero-Level Writing Course



## Persistence of OKC-Go! Cohorts Financial Aid



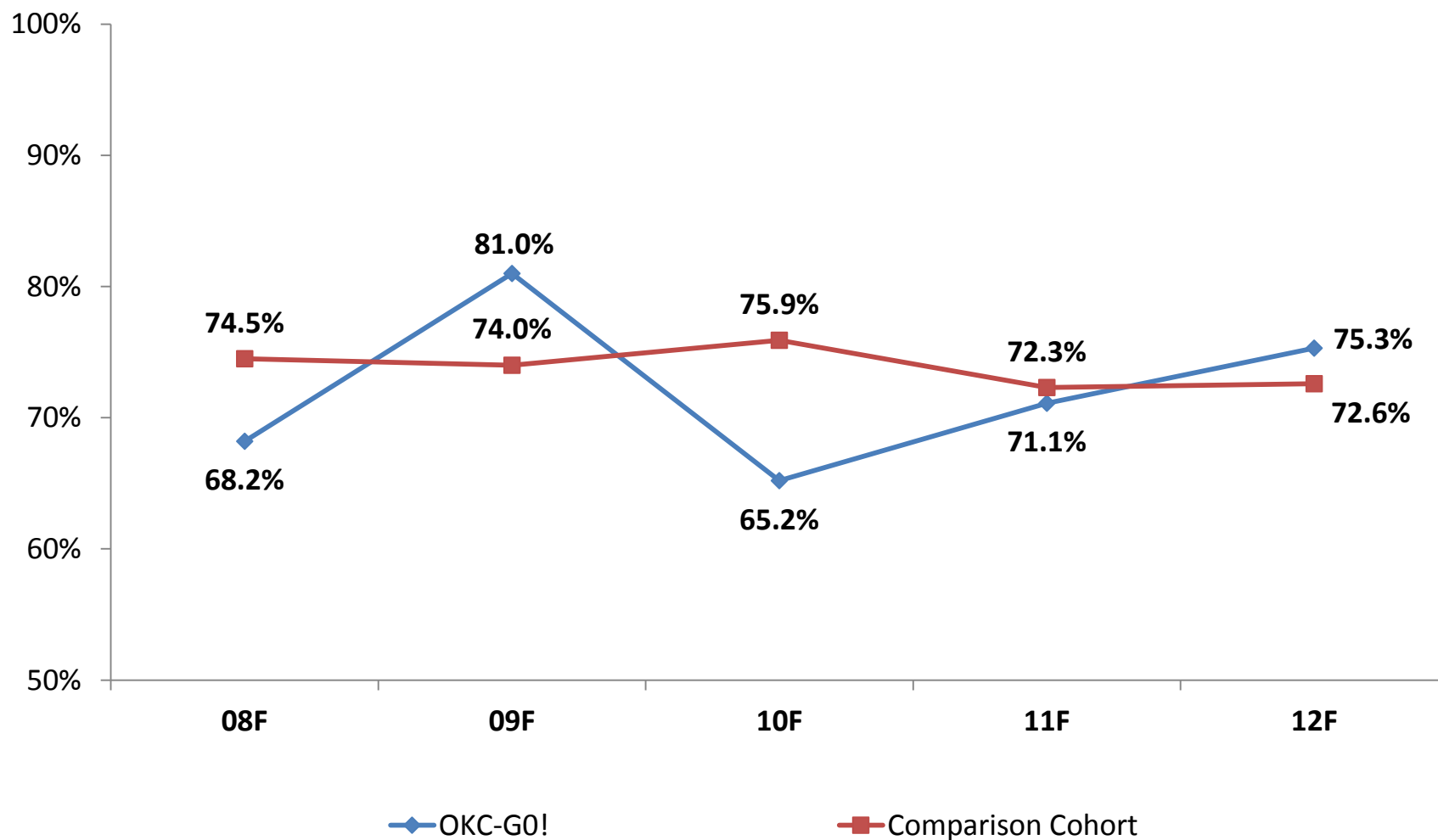
# Persistence of OKC-Go! Cohorts Financial Aid





# Persistence of OKC-Go! & Comparison Cohorts

## Financial Aid – EFC Less Than \$7,500



## Persistence of OKC-Go! & Comparison Cohorts

CATEGORY	OKC-GO! COHORT	COMPARISON COHORT
COHORT PERSISTENCE RATE	12F – 68.5%;	12F – 68.7%
ETHNICITY/RACE	12F – Hispanic/Latino (75.0%) and Black/African American (68.7%) rates substantially higher than Comparison Cohort with increasing trend	12F – Hispanic/Latino (52.4%) and Black/African American ((63.6%)
ETHNICITY/RACE	12F – Native American/Alaskan (58.8%) and White (52.3%) with declining trend	12F – Native American/Alaskan (71.9%) and White (71.9%) rates substantially higher than OKC-Go!
Prior Concurrent at OCCC	12F – 76.9%	12F – 71.9%
Prior Concurrent Elsewhere	12F – 64.7%	12F – 72.1

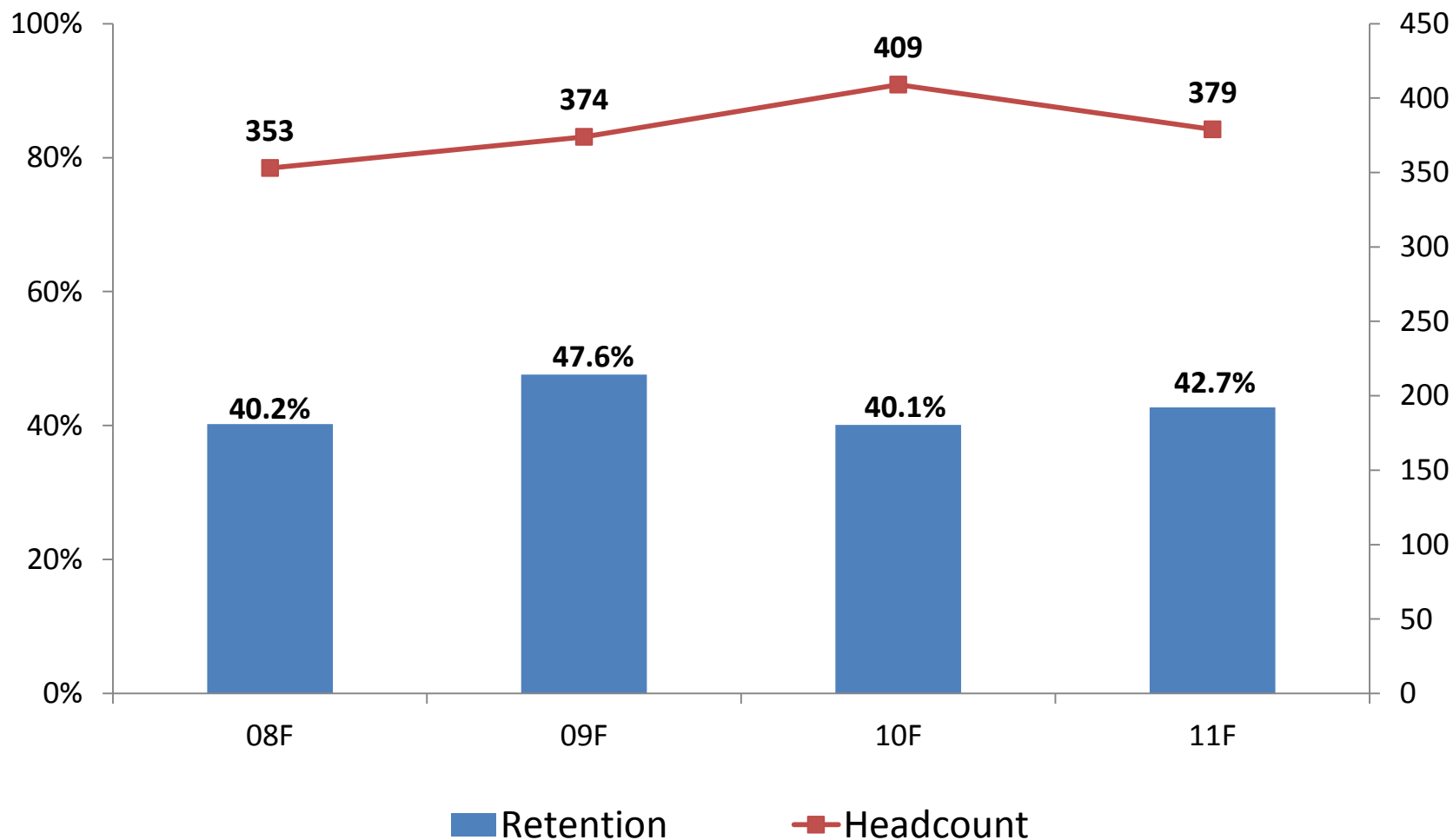
## Persistence of OKC-Go! & Comparison Cohorts

CATEGORY	OKC-GO! COHORT	COMPARISON COHORT
Enrolled in at least 1 Zero-Level Course	12F – 69.5%	12F – 67.0%
Enrolled in Zero-Level Math	12F – 71.4%	12F – 68.3%
Enrolled in Zero-Level Reading	12F – 58.7%	12F – 55.0%
Enrolled in Zero-Level Writing	12F – 66.9%	12F – 61.2%
Successful in Success in College & Life	12F – 86.5%	12F – 84.8%;
Expected Family Contribution	12F – 73.5% in lowest EFC and 75.3% in EFC less than \$7,500	12F – 72.2% in lowest EFC and 72.6% in EFC less than \$7,500

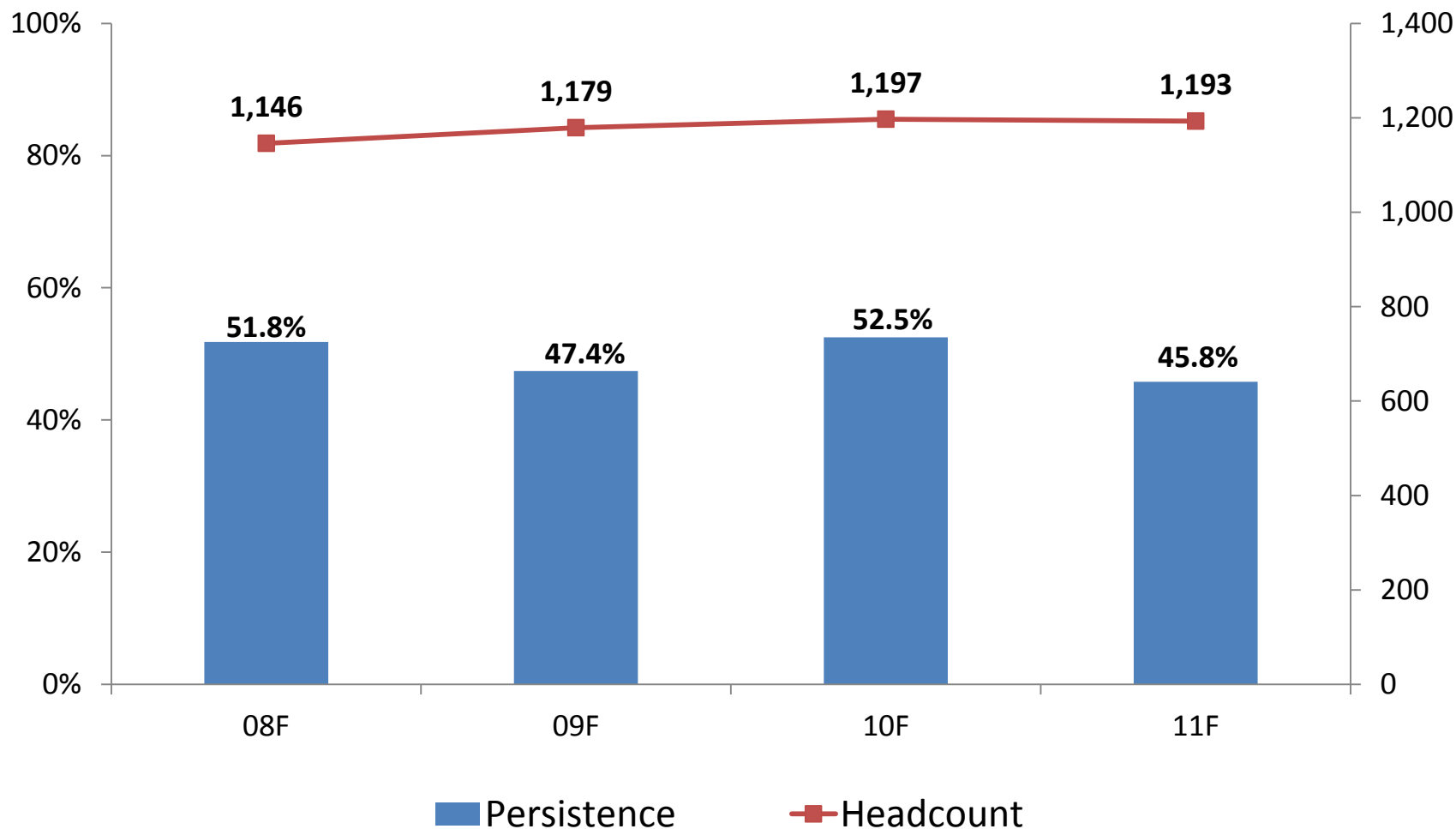
# RETENTION

(FALL TO FALL)

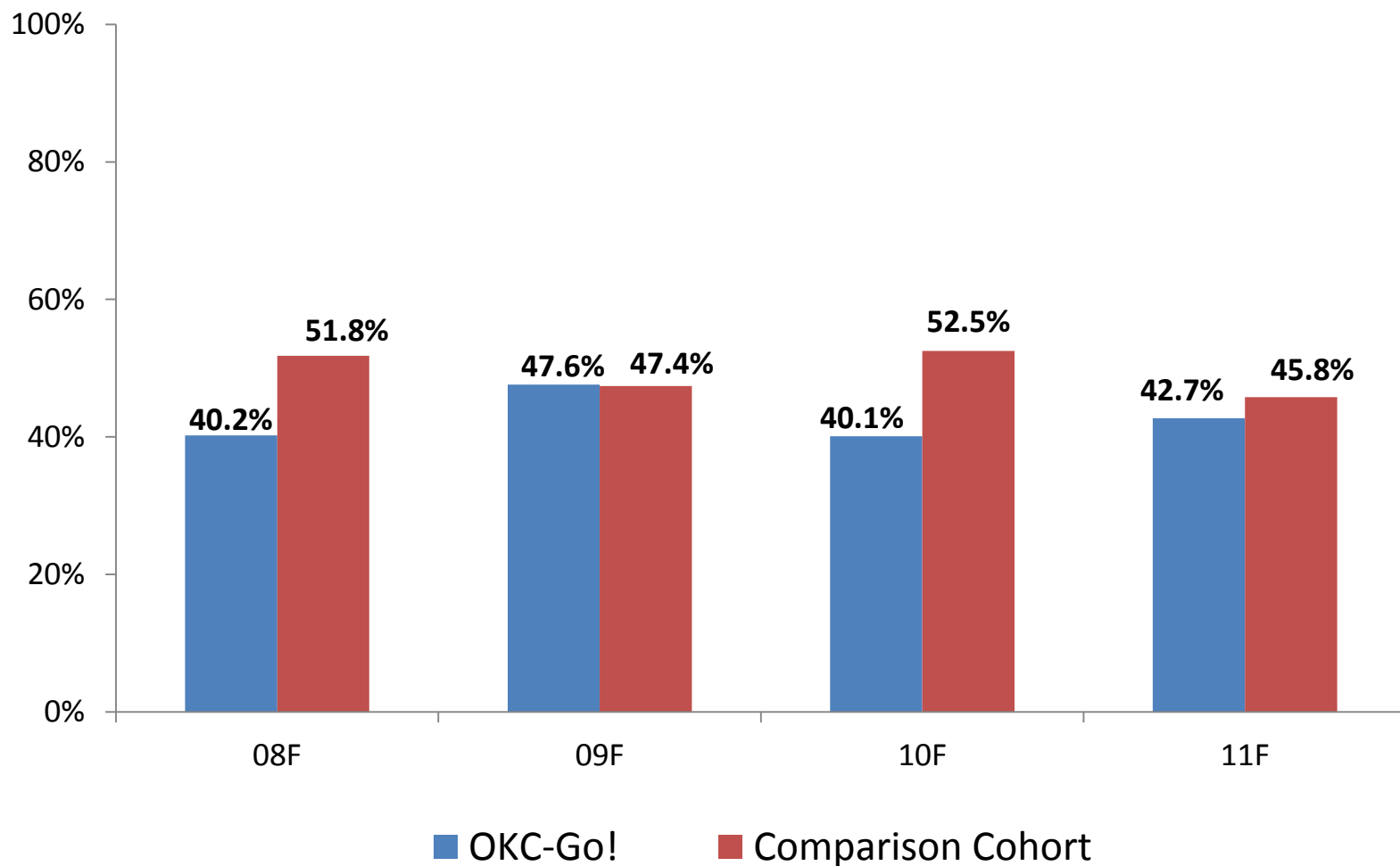
## Headcount of OKC-GO! Cohorts and Retention to Following Fall



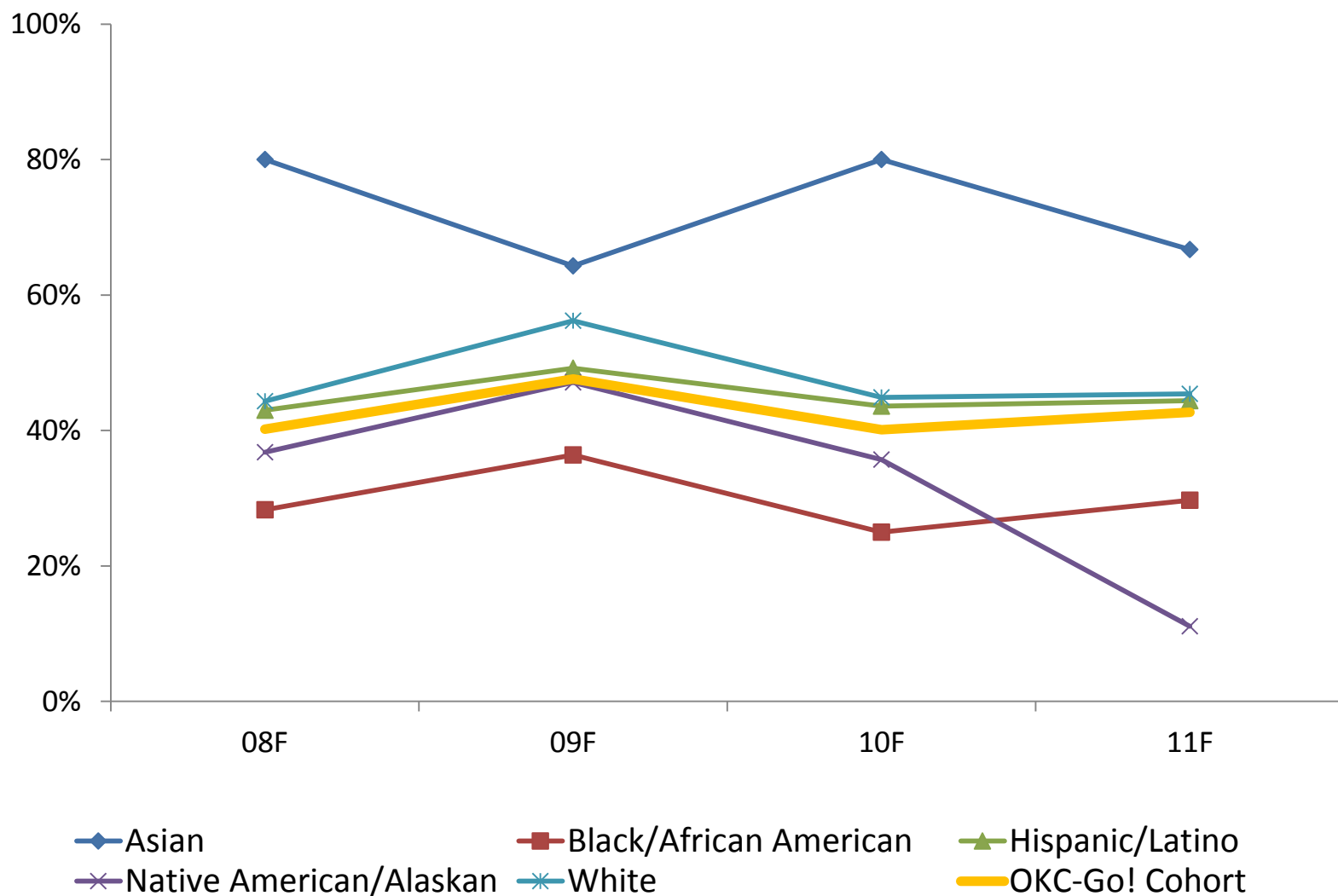
## Headcount of Comparison Cohort and Retention to Following Fall



## OKC-Go! & Comparison Cohort Retention to Following Fall



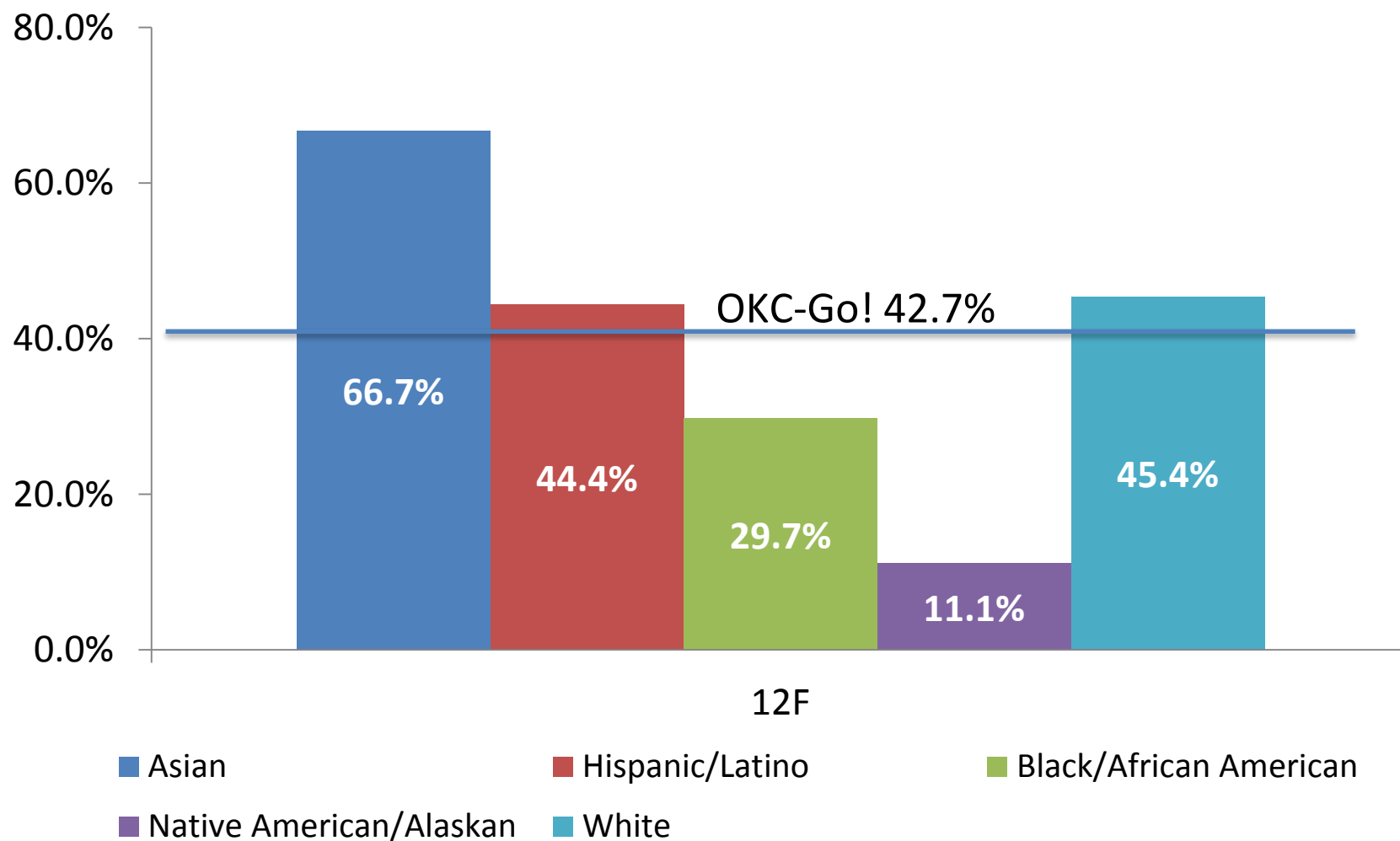
# Retention of OKC-Go! to Following Fall Ethnicity/Race





# Retention of OKC-Go! Fall 2011

## Ethnicity/Race



## Retention of OKC-Go! & Comparison Cohorts

CATEGORY	OKC-GO! COHORT	COMPARISON COHORT
COHORT RETENTION RATE	11F – 42.7%	11F – 45.8%
ETHNICITY/RACE	12F – Hispanic/Latino (44.4%) and Black/African American (29.7%) rates lower than Comparison Cohort	12F – Hispanic/Latino (45.5%) and Black/African American (32.6%)
ETHNICITY/RACE	12F – Native American/Alaskan (58.8%) and White (52.3%) with declining trend	12F – Native American/Alaskan (32.9%) and White (47.6%) rates substantially higher than OKC-Go!
Prior Concurrent at OCCC	12F – 71.4%	12F – 53.1%
Prior Concurrent Elsewhere	12F – 62.5%	12F – 27.6%

## Retention of OKC-Go! & Comparison Cohorts

CATEGORY	OKC-GO! COHORT	COMPARISON COHORT
Enrolled in at least 1 Zero-Level Course	11F – 36.2%	11F – 42.9%
Enrolled in Zero-Level Math	11F – 35.9%	11F – 44.2%
Enrolled in Zero-Level Reading	11F – 29.8%	11F – 31.7%
Enrolled in Zero-Level Writing	11F – 31.4%	11F – 41.7%
Successful in Success in College & Life	11F – 66.1%	11F – 59.5%;
Expected Family Contribution	11F – 38.4% in lowest EFC and 42.6% in EFC less than \$7,500	11F – 41.8% in lowest EFC and 42.3% in EFC less than \$7,500

## Retention of OKC-Go! & Comparison Cohorts

CATEGORY	OKC-GO! COHORT	COMPARISON COHORT
Enrolled in at least 1 Zero-Level Course	11F – 36.2%	11F – 42.9%
Enrolled in Zero-Level Math	11F – 35.9%	11F – 44.2%
Enrolled in Zero-Level Reading	11F – 29.8%	11F – 31.7%
Enrolled in Zero-Level Writing	11F – 31.4%	11F – 41.7%
Successful in Success in College & Life	11F – 66.1%	11F – 59.5%;
Expected Family Contribution	11F – 38.4% in lowest EFC and 42.6% in EFC less than \$7,500	11F – 41.8% in lowest EFC and 42.3% in EFC less than \$7,500