



# Complete College OCCC

## Fall 2013 AtD Cohort Composition & Persistence

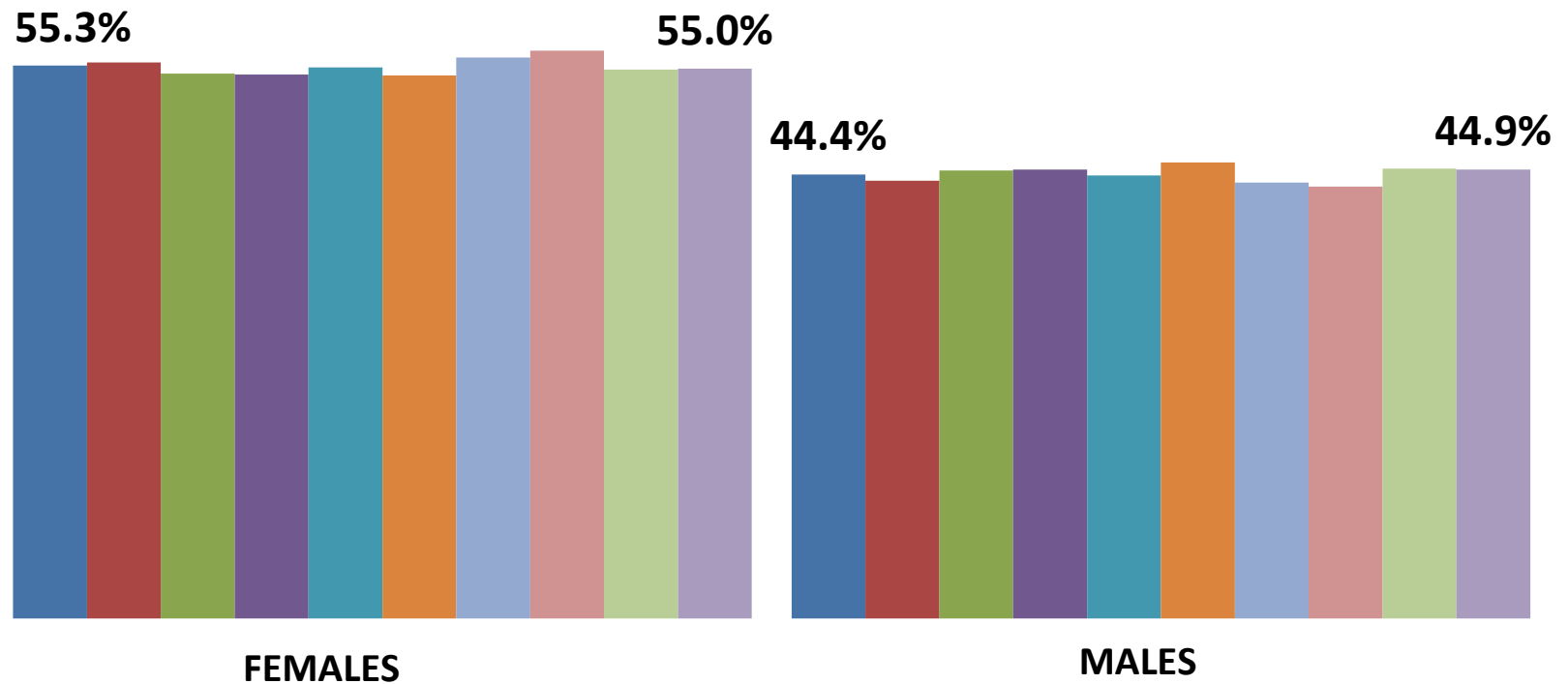
*February 12, 2014*

## DEFINITION OF AtD COHORT AND PERSISTENCE

- AtD Cohort consists of students who are new to OCCC in the fall semester.
  - New to higher education (OCCC first college attended)
  - New Transfer (transferring credit hours from one or more other higher education institutions to OCCC for the first time)
- Persistence – student from AtD Cohort enrolls in following spring semester

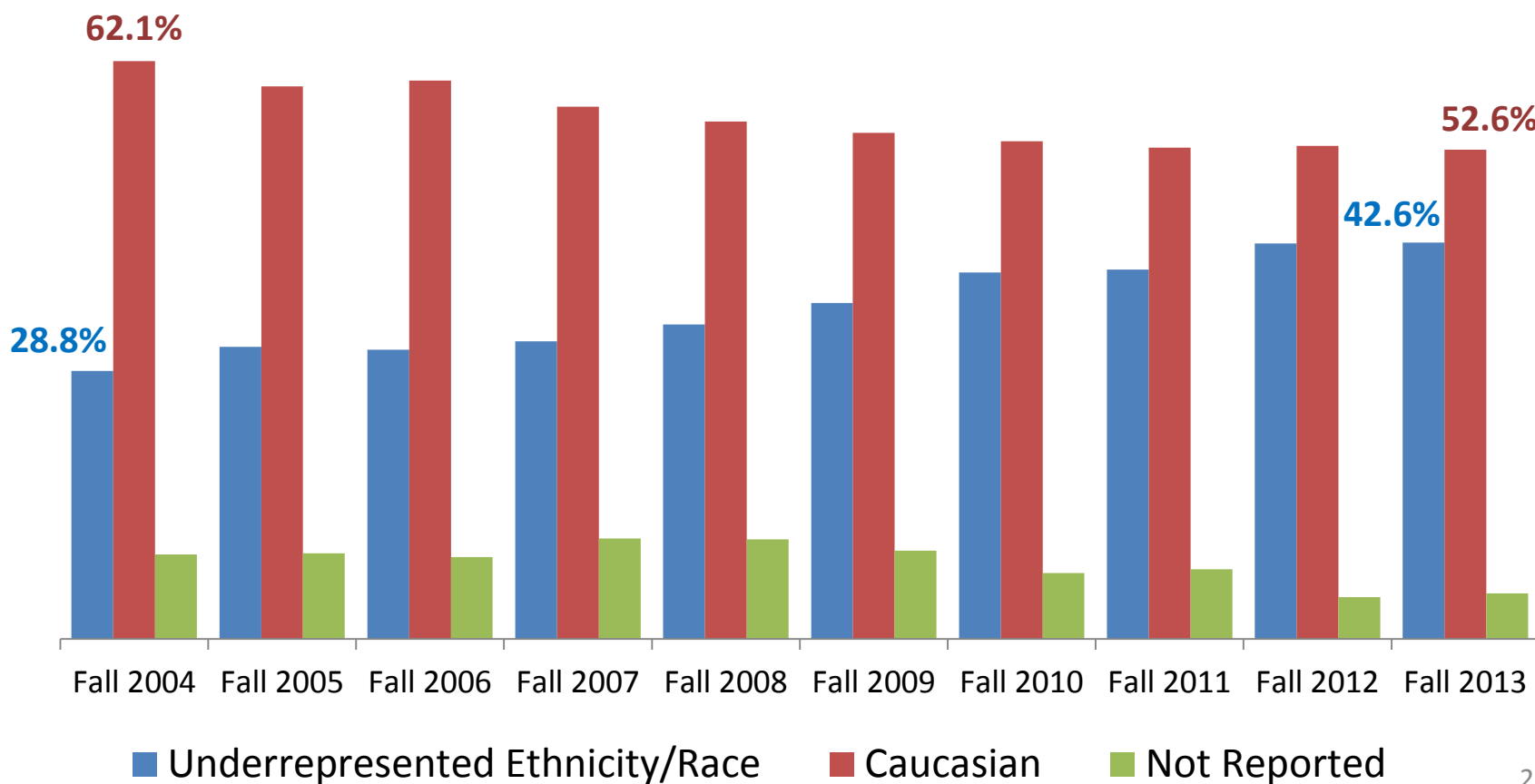
# Composition of AtD COHORTS

## Ten Year Look - GENDER



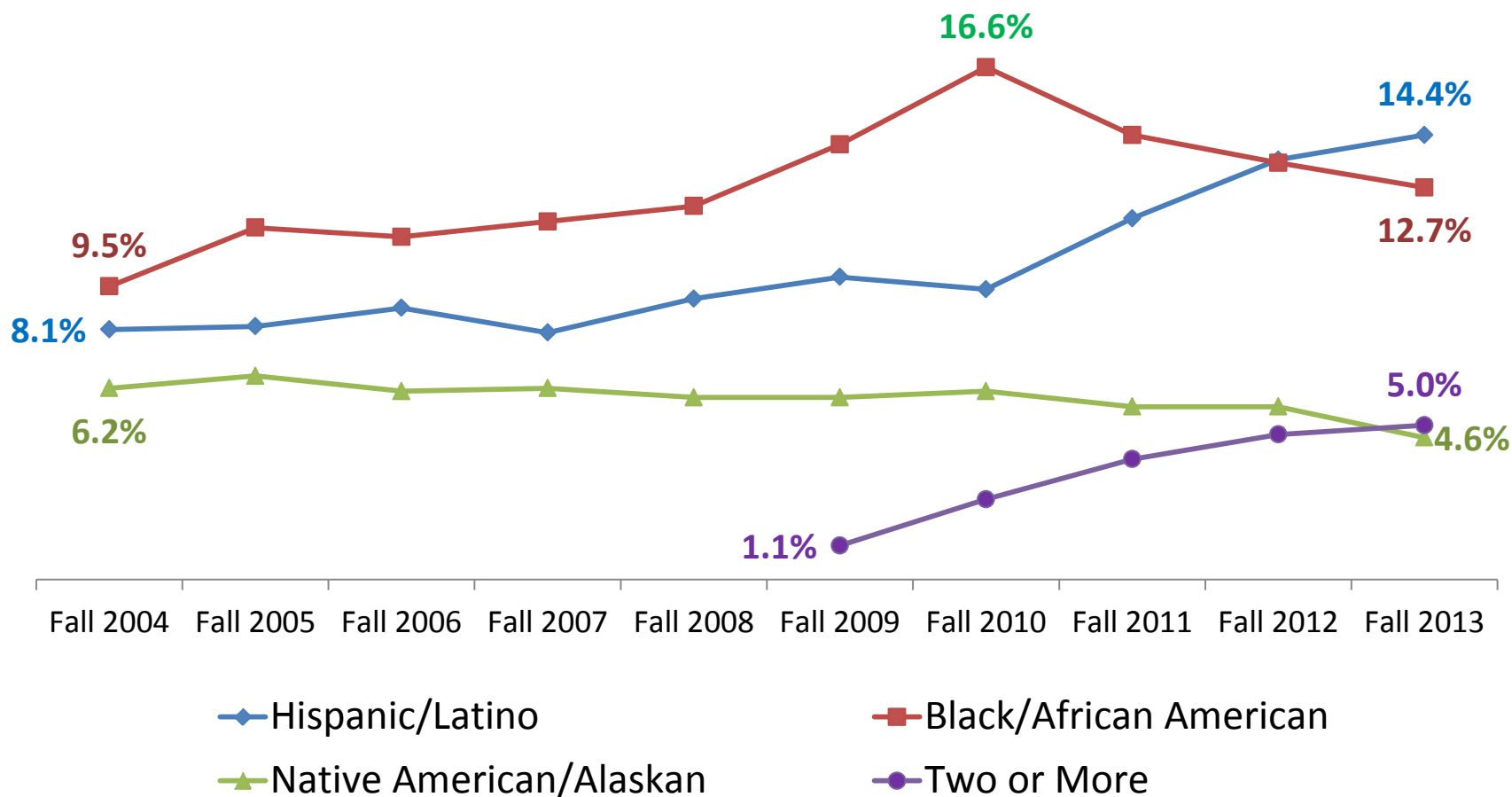
# Composition of AtD COHORTS

## Ten Year Look – ETHNICITY/RACE



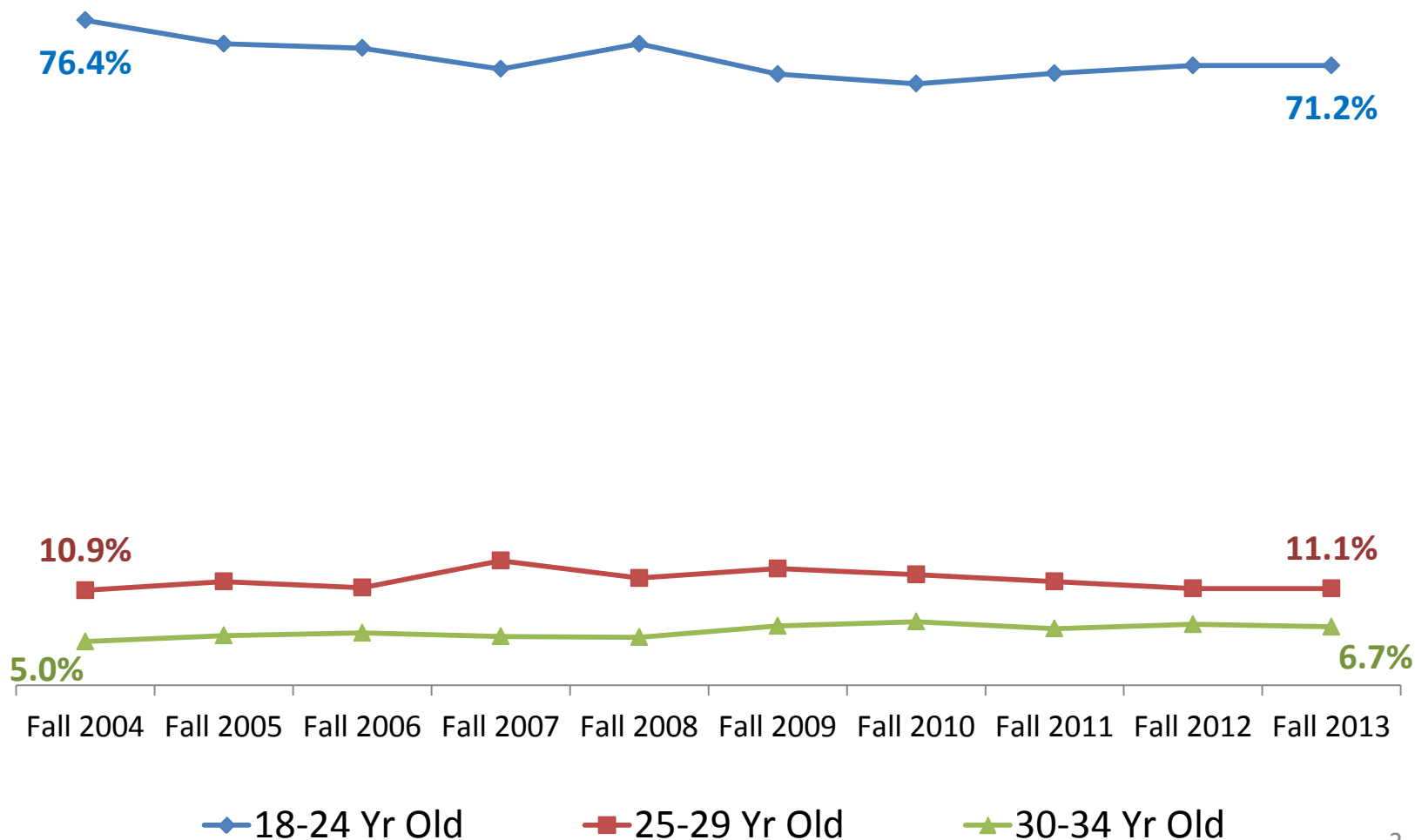
# Composition of AtD COHORTS

## Ten Year Look – UNDER REPRESENTED ETHNICITY/RACE

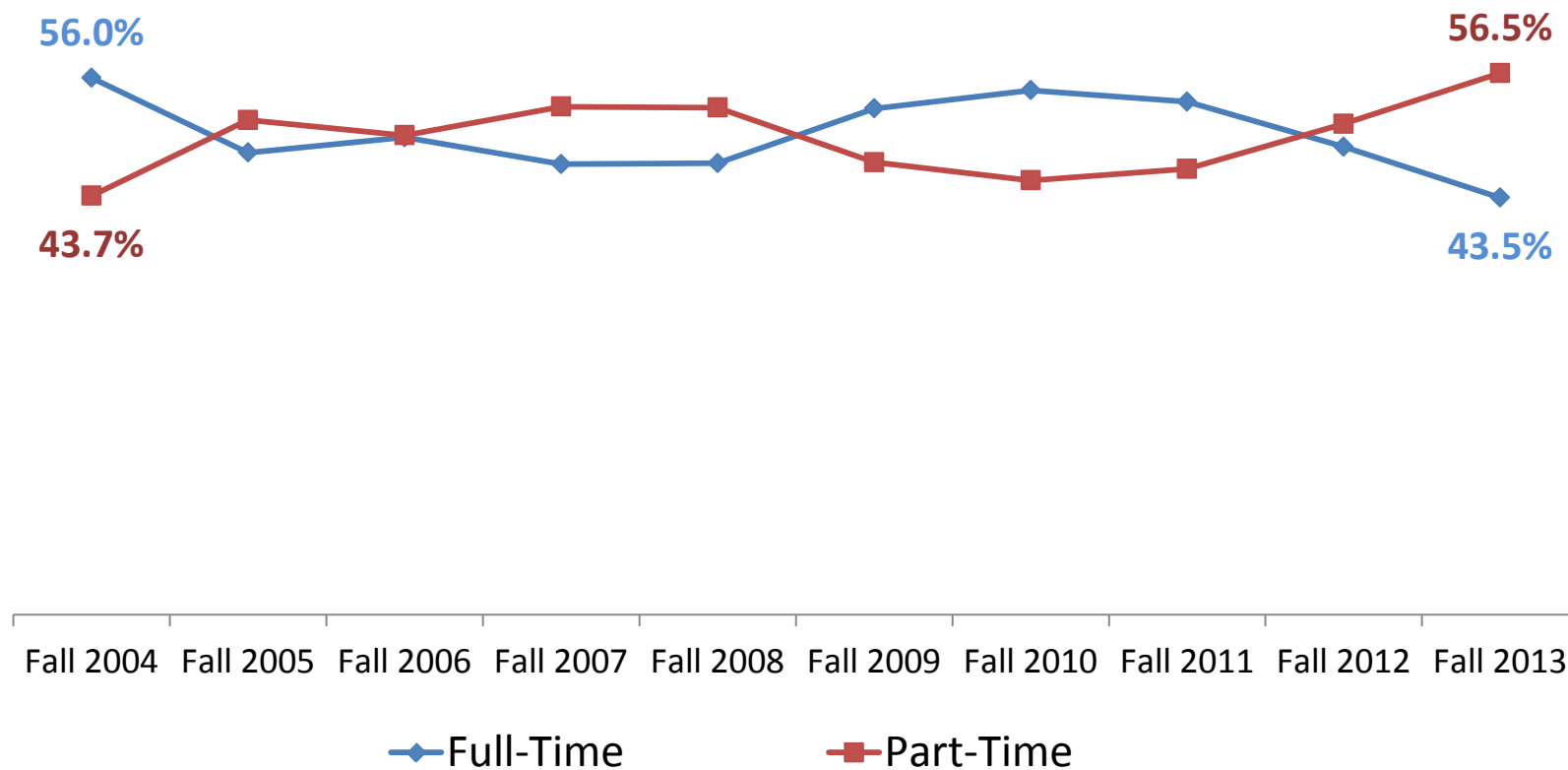


# Composition of AtD COHORTS

## Ten Year Look – AGE GROUPS

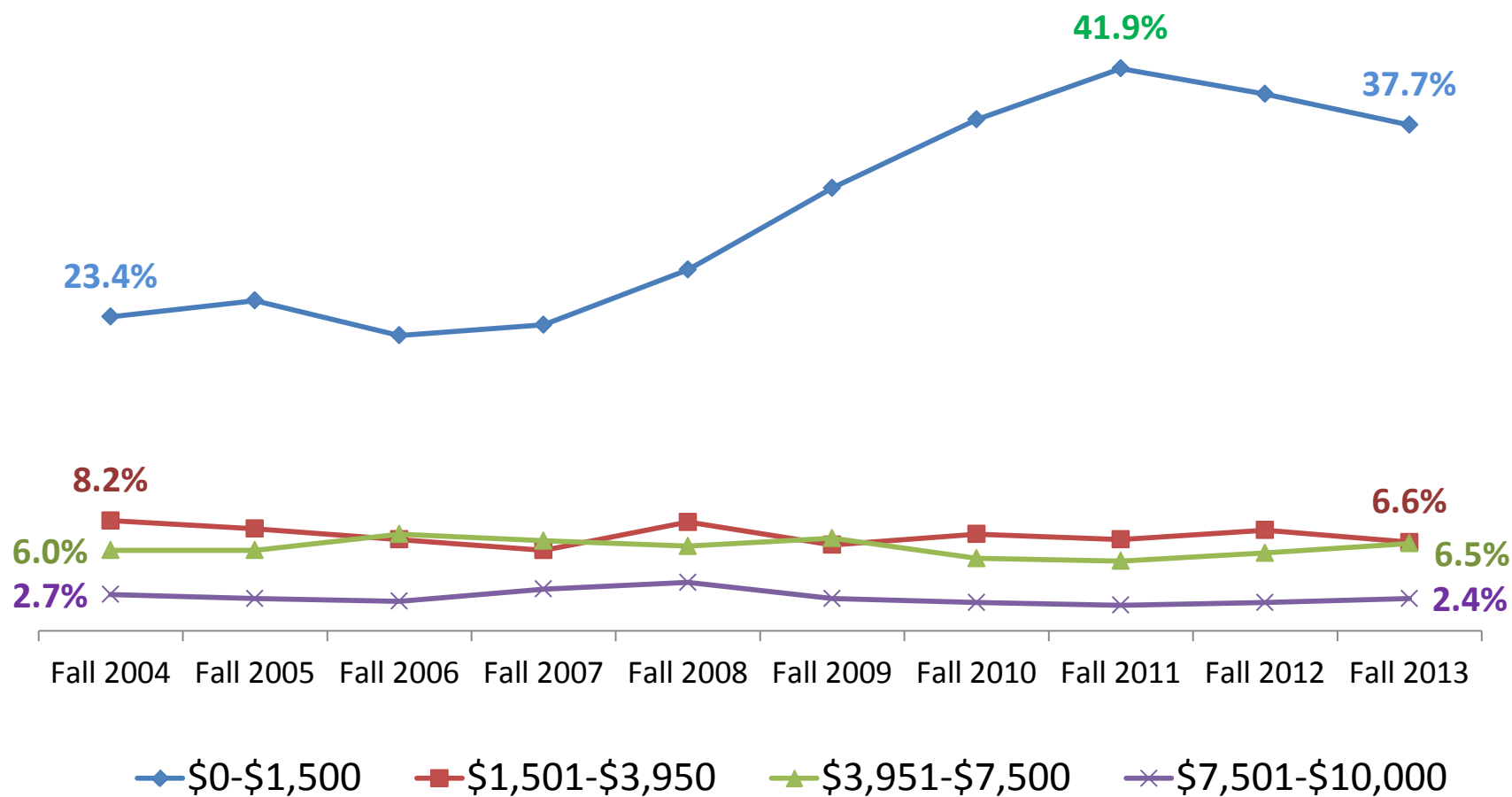


# Composition of AtD COHORTS Ten Year Look – COURSE LOAD



# Composition of AtD COHORTS

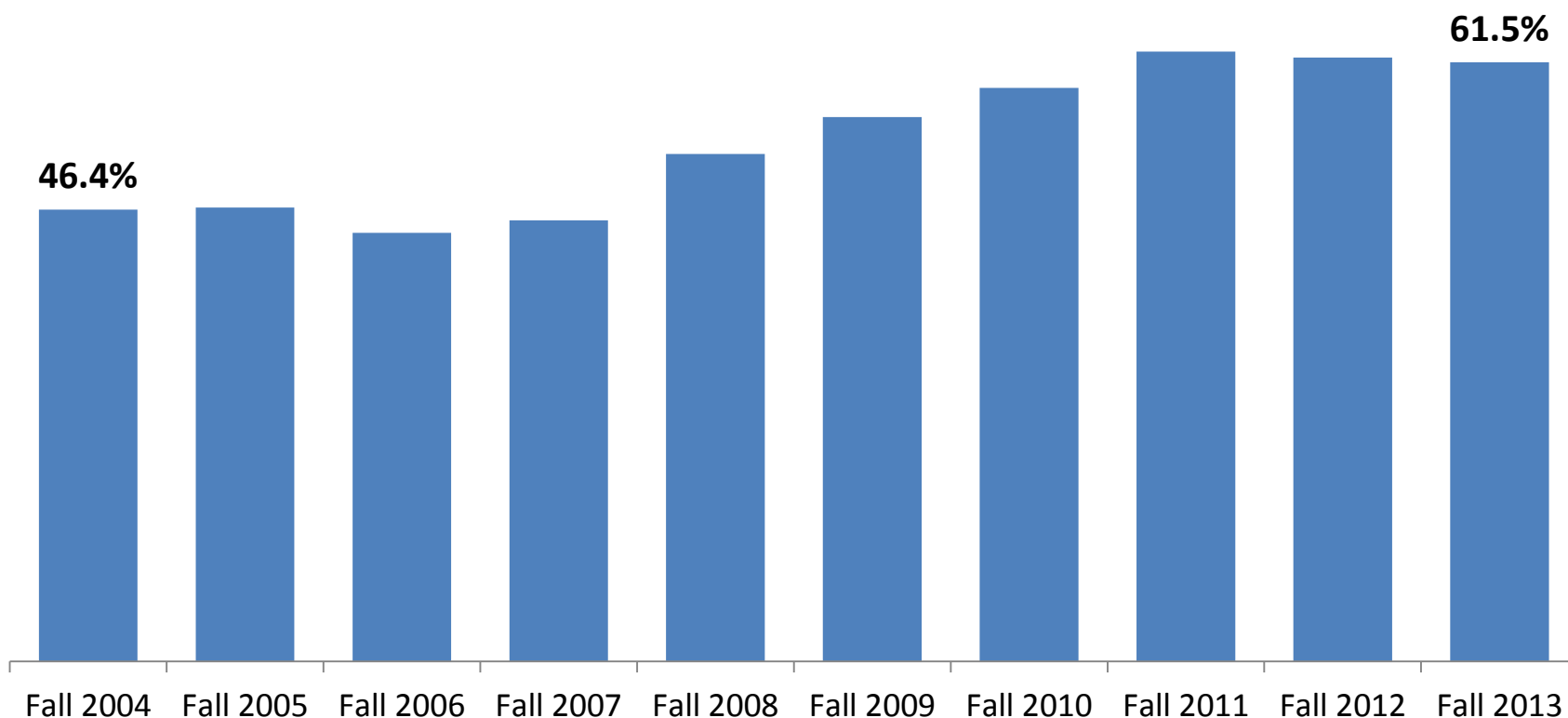
## Ten Year Look – EFC GROUPS





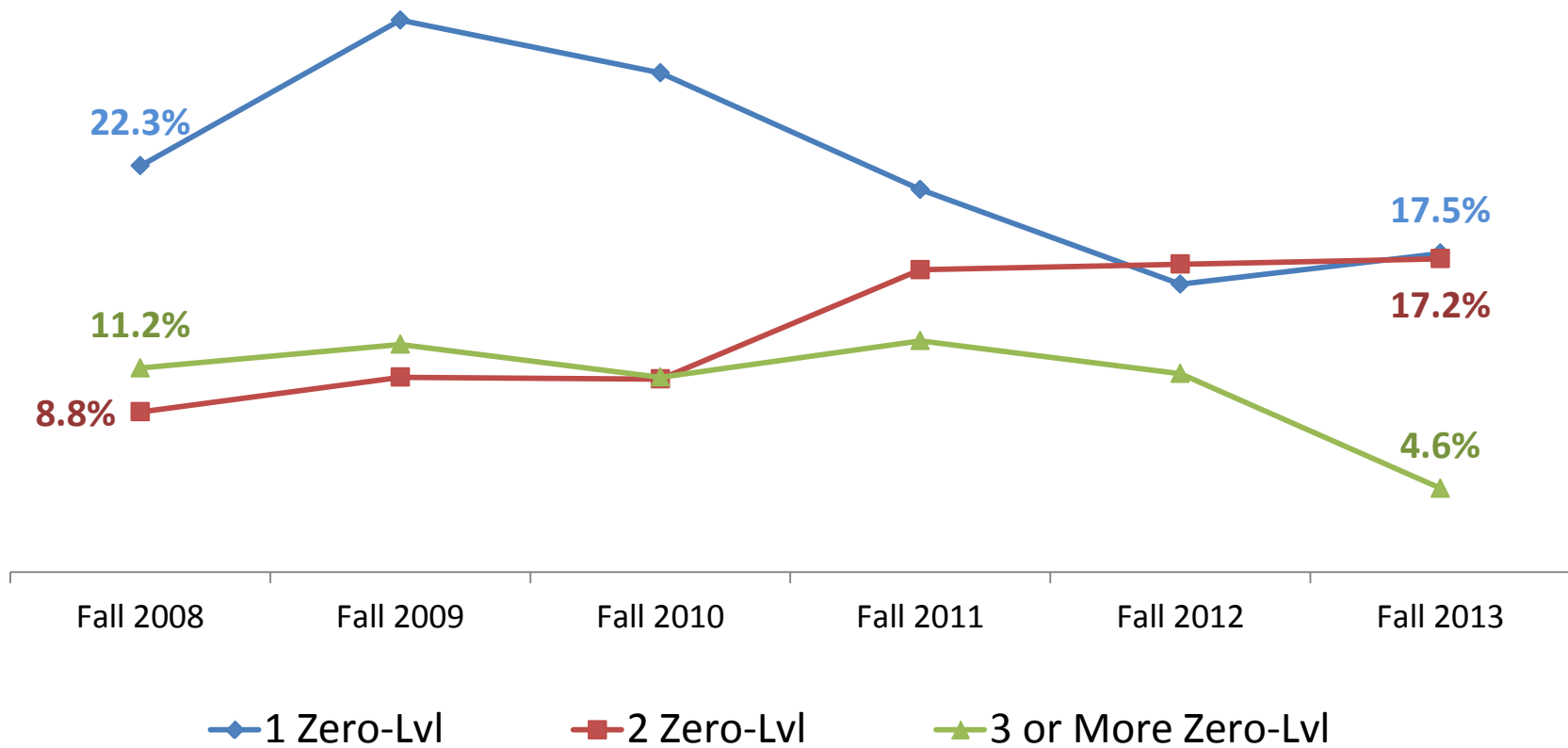
# Composition of AtD COHORTS

## Ten Year Look – Applied for Financial Aid



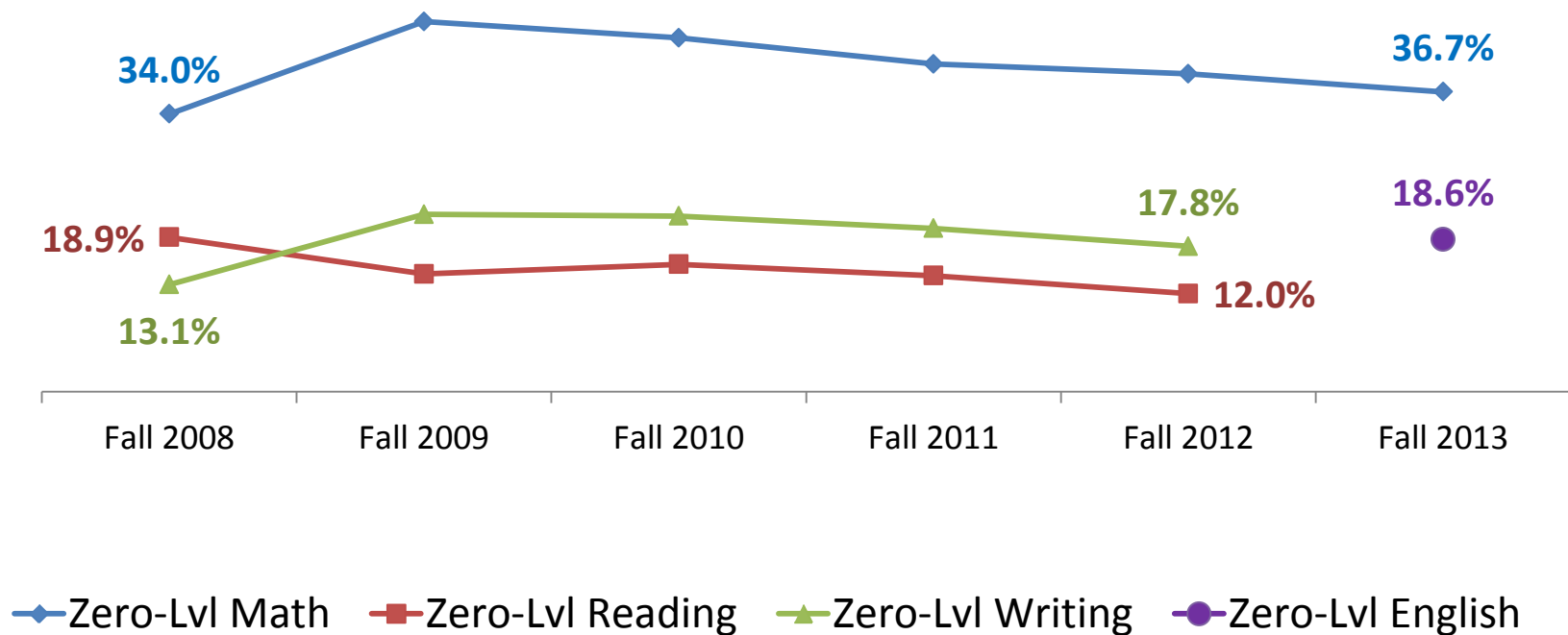
# Composition of AtD COHORTS

## Six Year Look – Enrolled in Zero-Level Course(s)



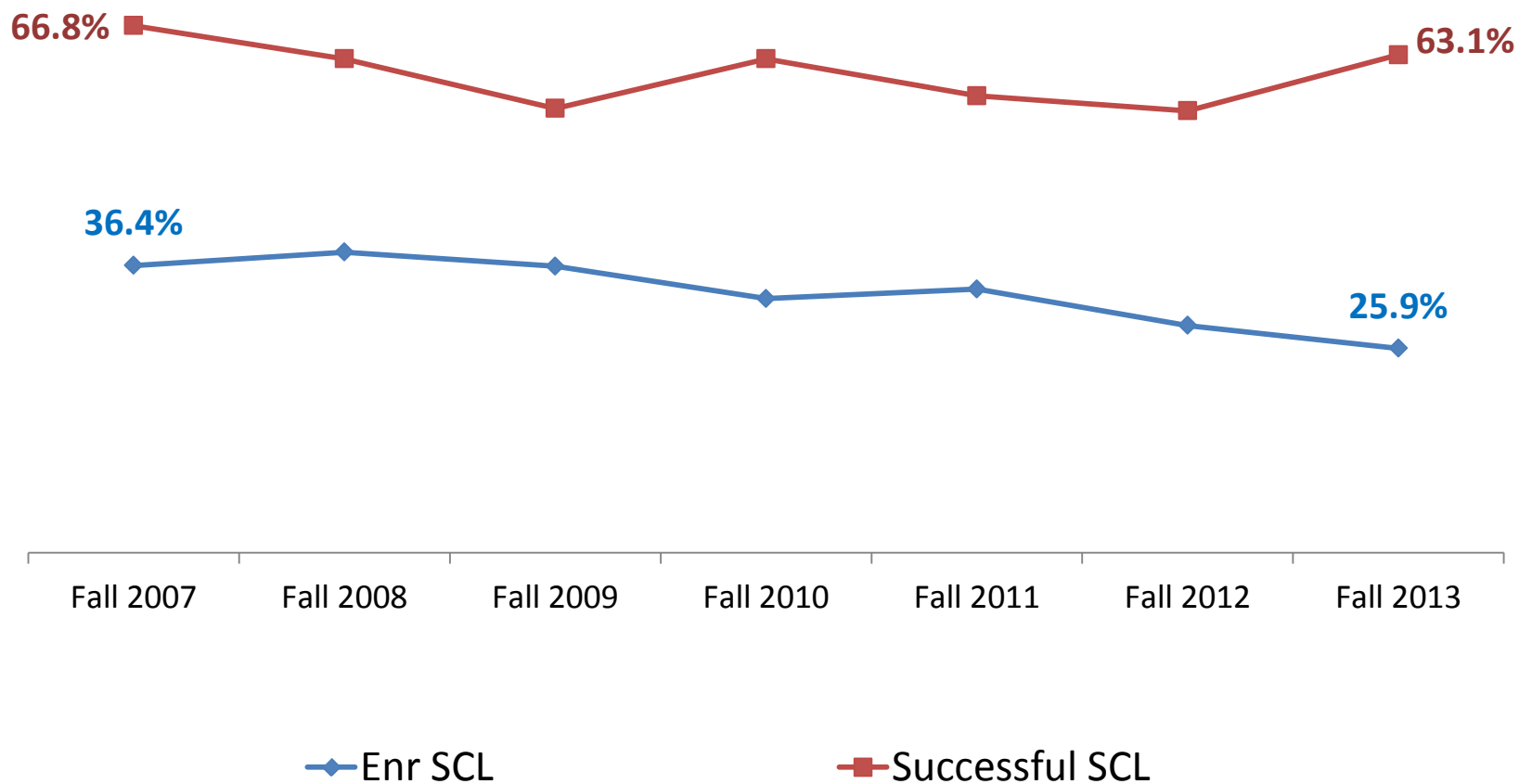
# Composition of AtD COHORTS

## Six Year Look – Enrolled in Zero-Level Course



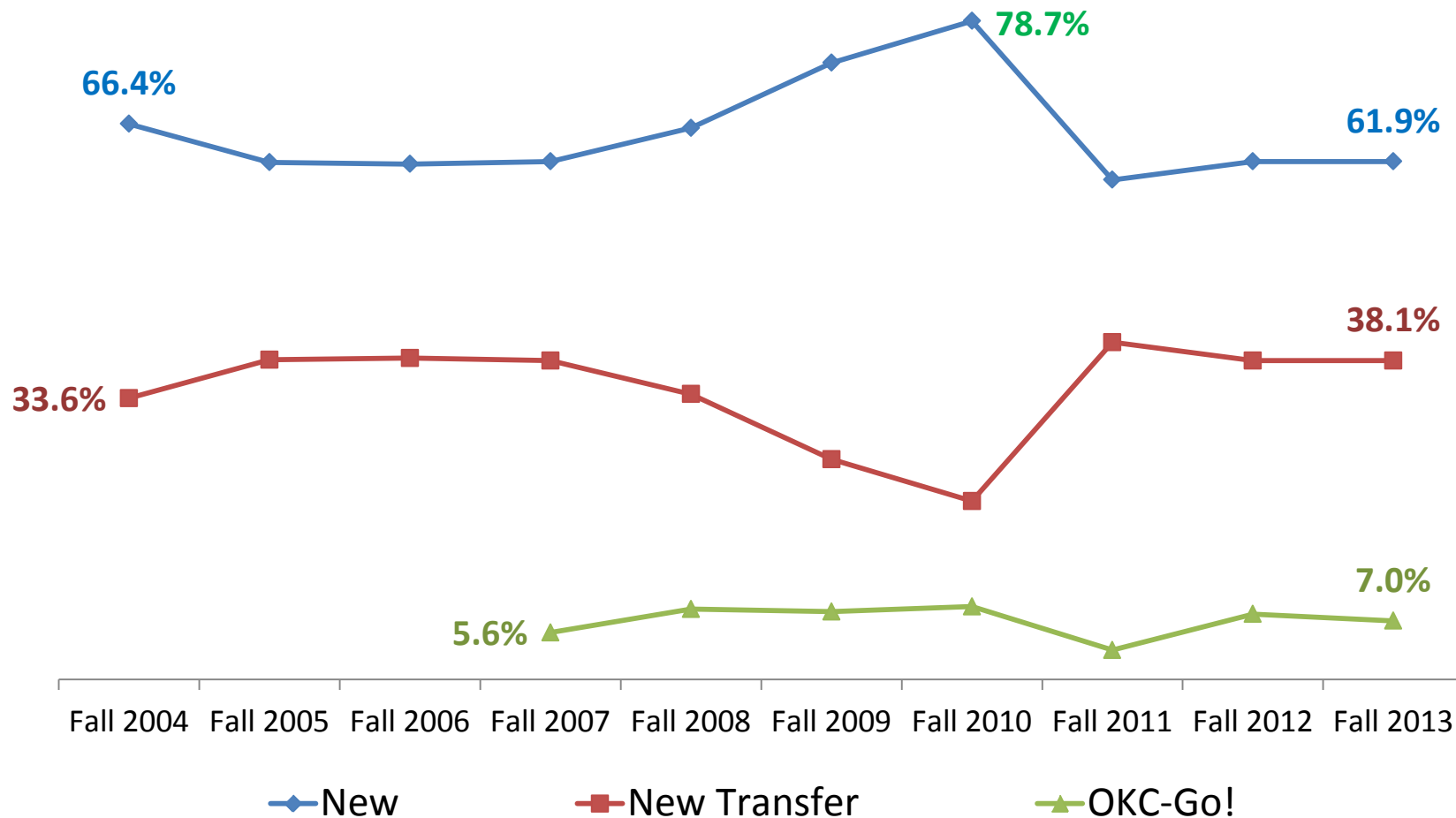
# Composition of AtD COHORTS

## Seven Year Look – Enrolled in SCL and Success

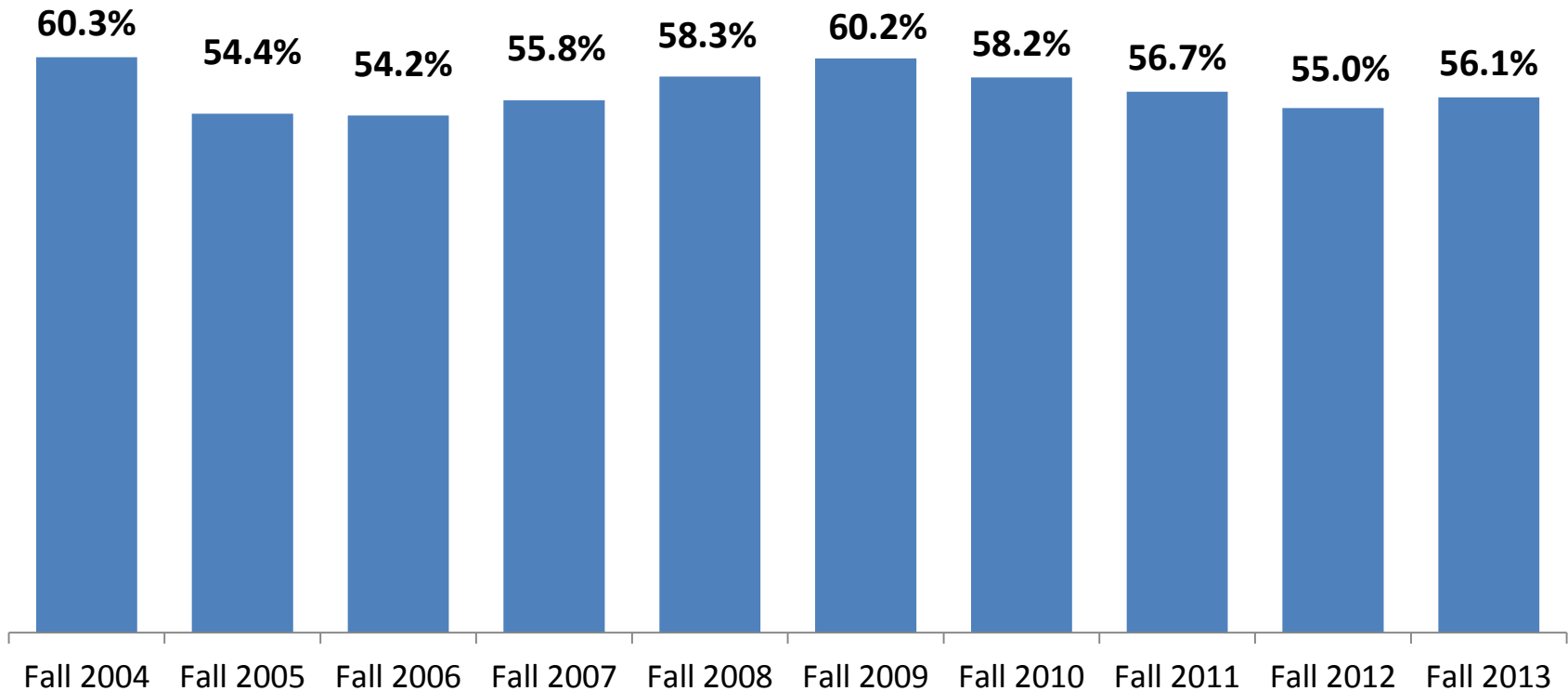


# Composition of AtD COHORTS

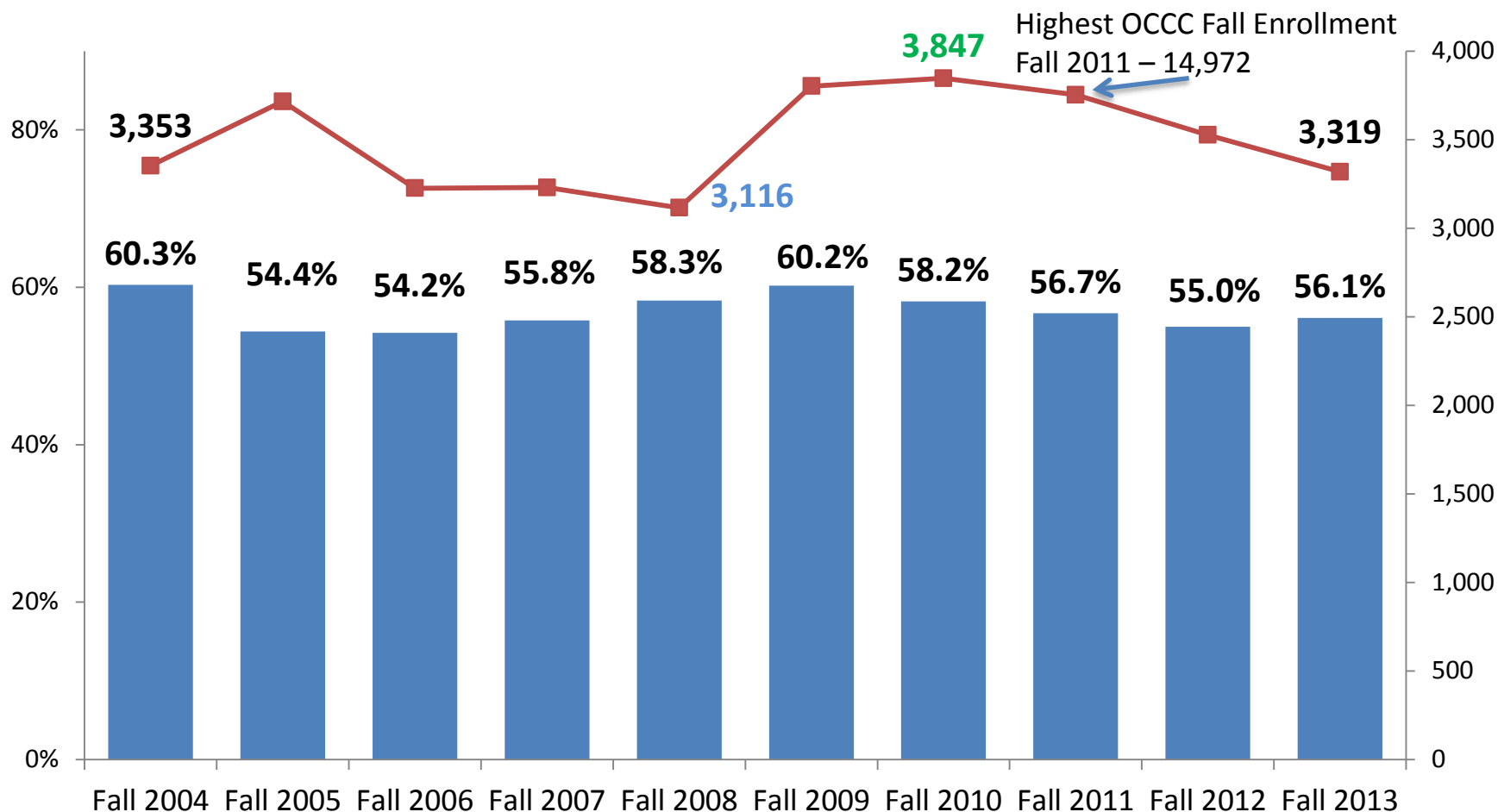
## Ten Year Look – New, New Transfer, & OKC-Go!



## PERSISTENCE of AtD COHORTS to FOLLOWING SPRING

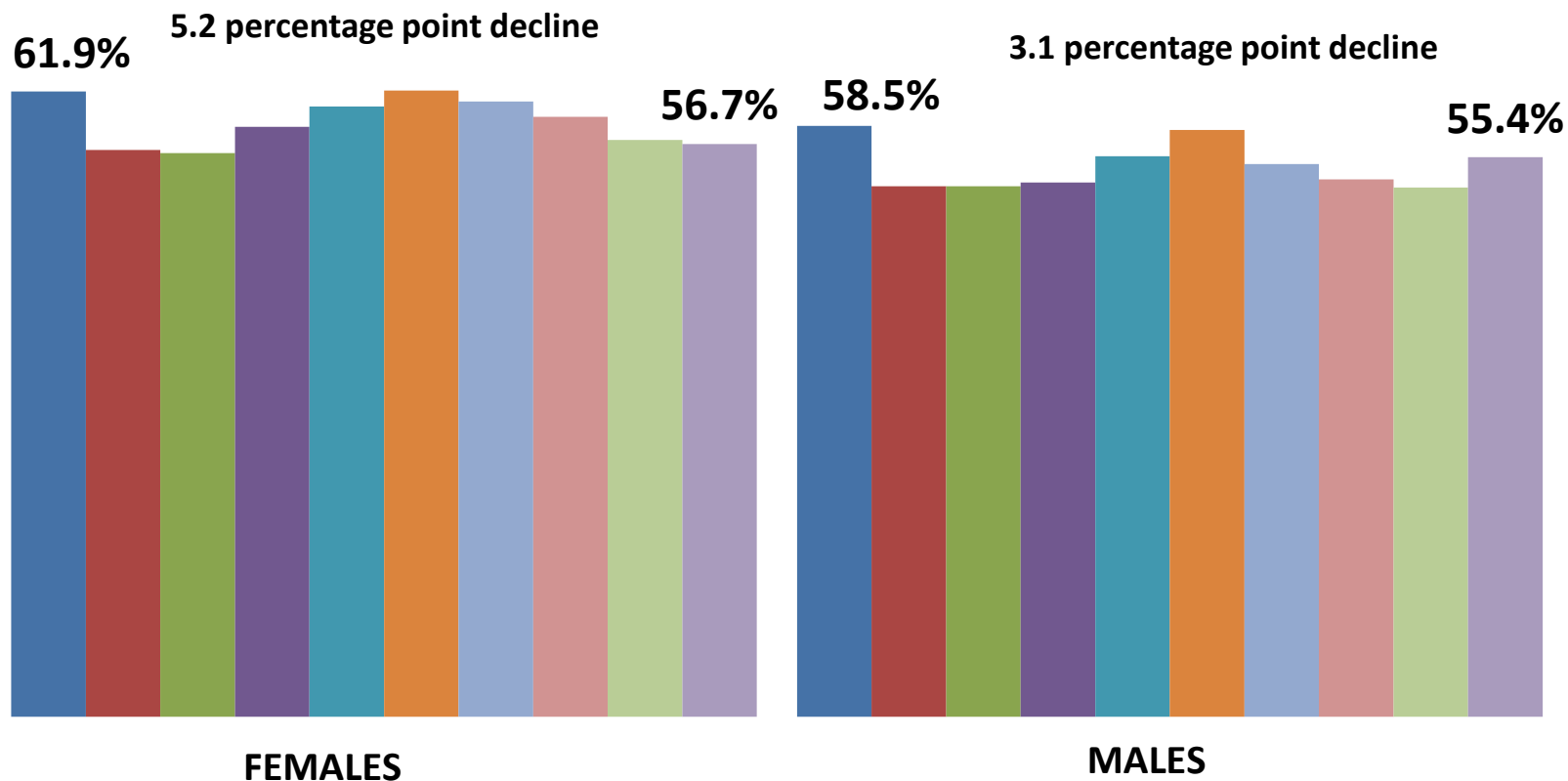


# HEADCOUNT and PERSISTENCE of AtD COHORTS to FOLLOWING SPRING



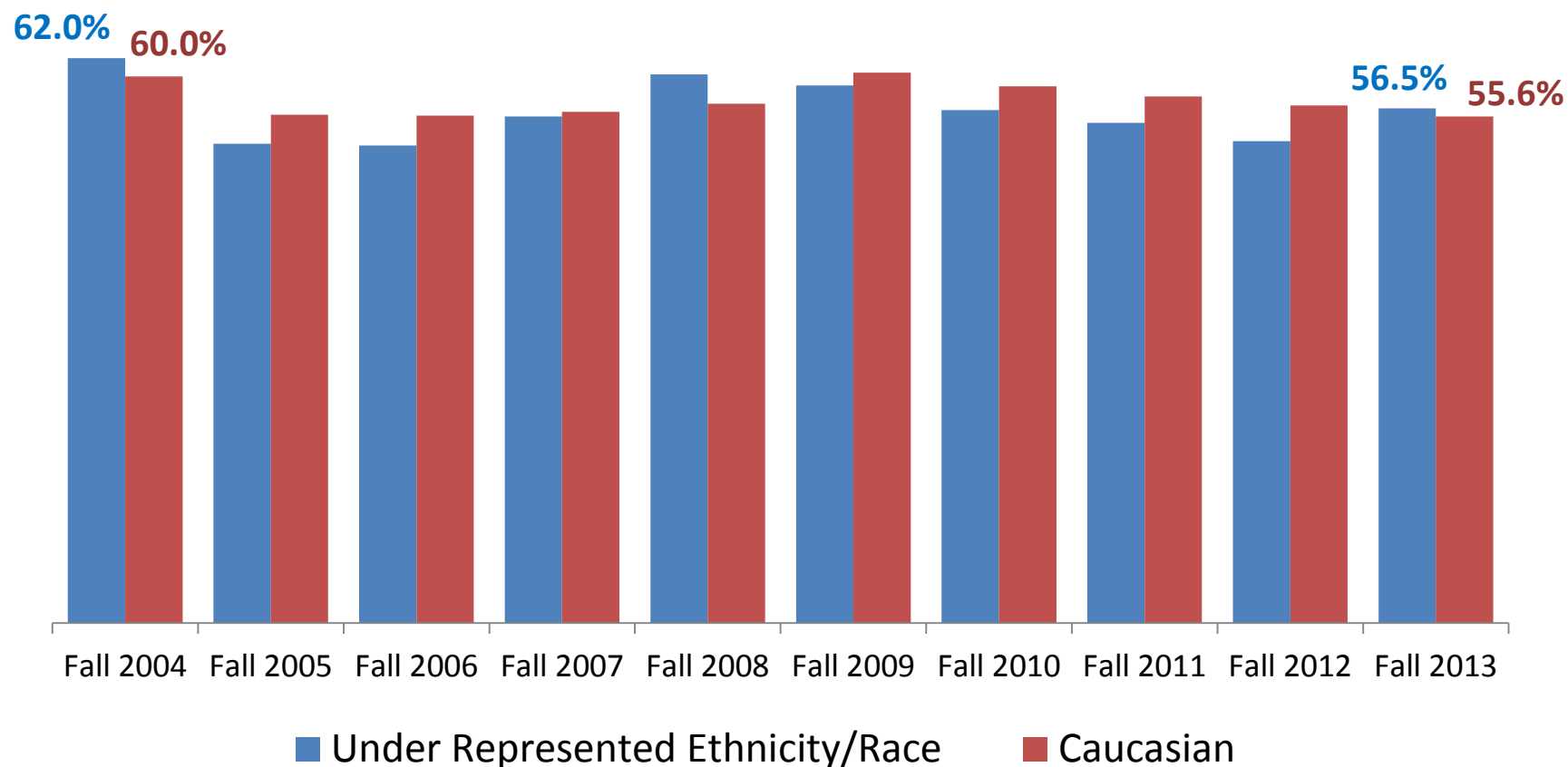
# Persistence of AtD COHORTS

## Ten Year Look - GENDER





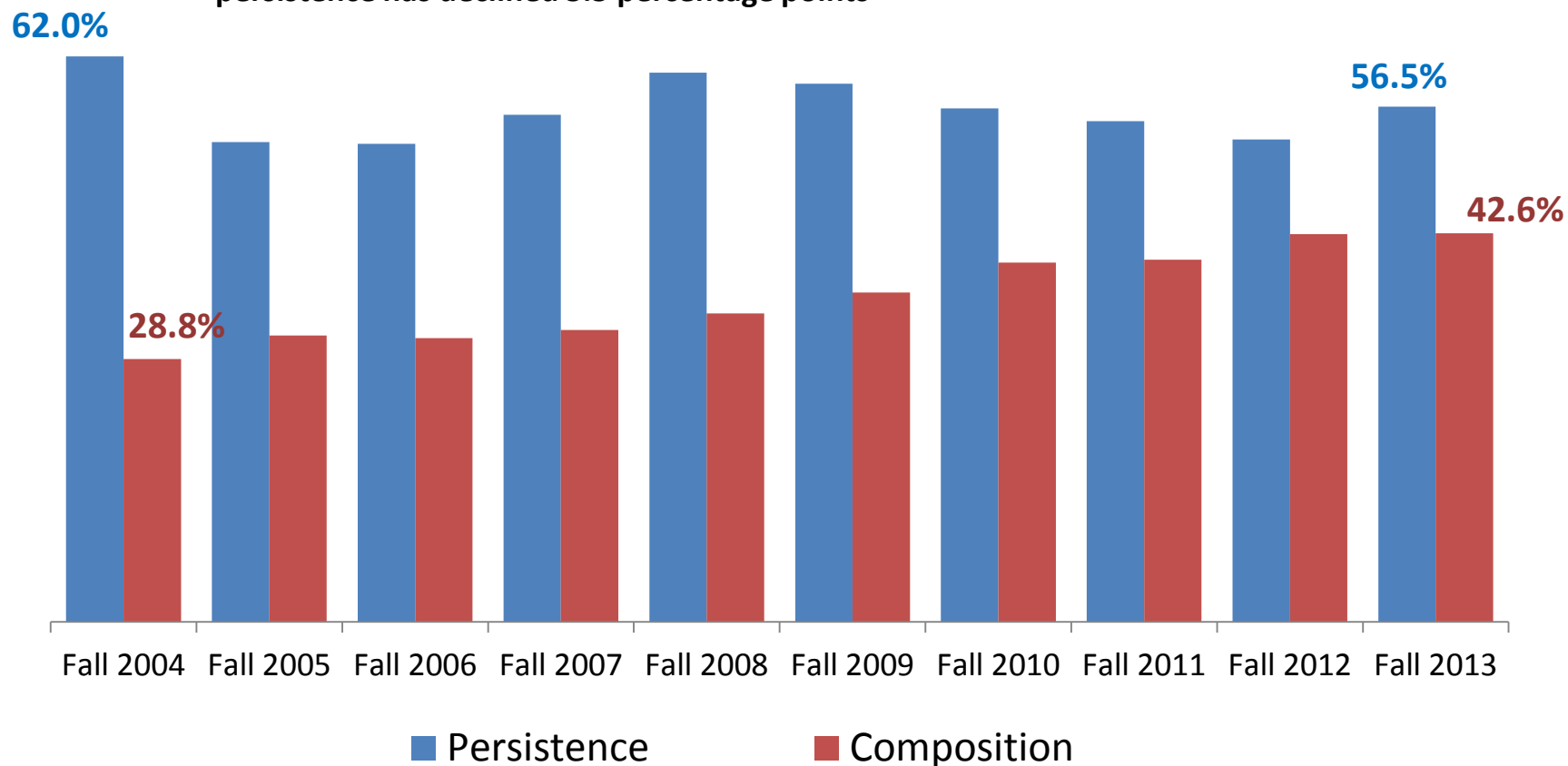
## Persistence of AtD COHORTS Ten Year Look – ETHNICITY/RACE



# Composition & Persistence of AtD COHORTS

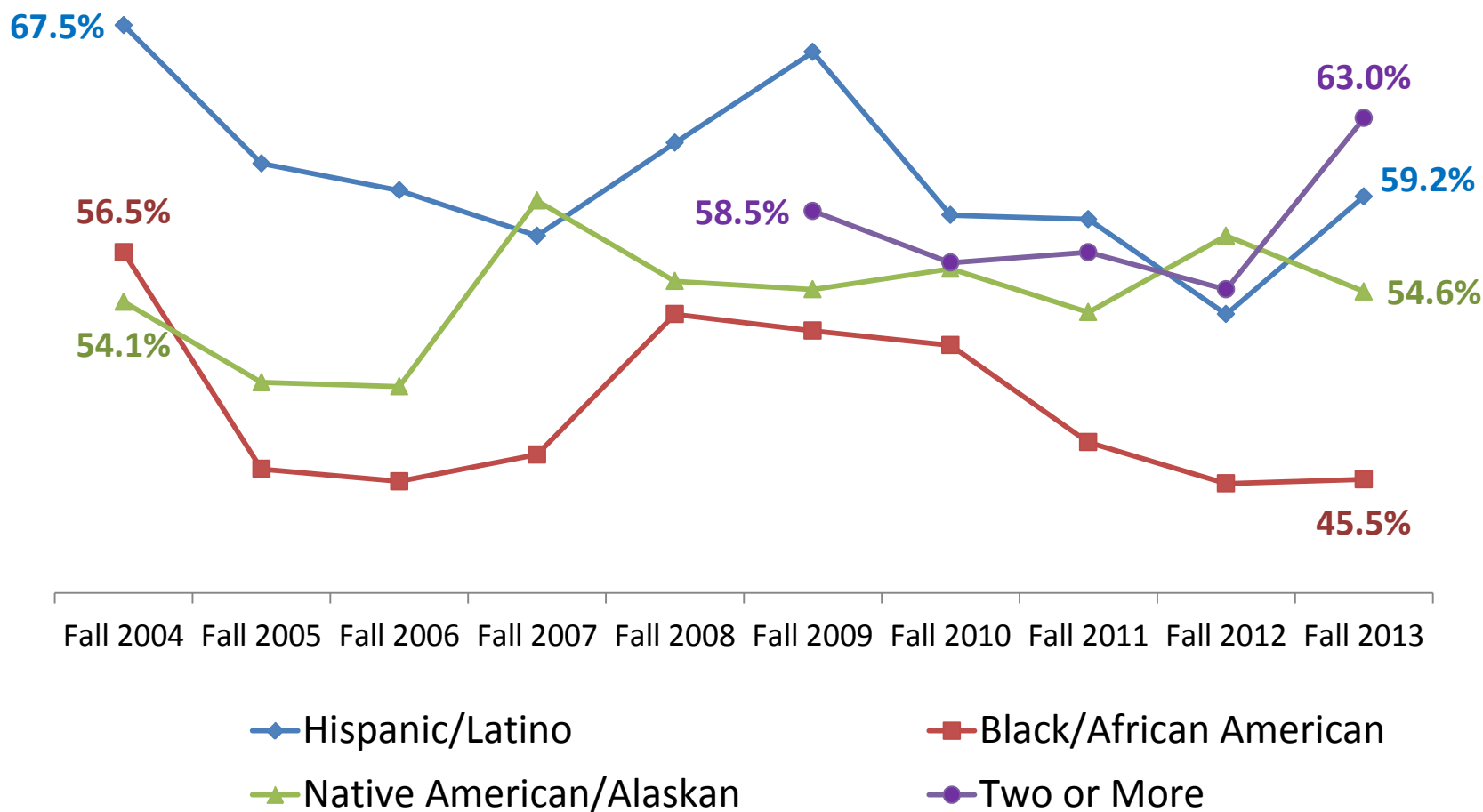
## Ten Year Look – UNDER REPRESENTED ETHNICITY/RACE

Percent of total Cohort has increased almost 14 percentage points while persistence has declined 5.5 percentage points



# Persistence of AtD COHORTS

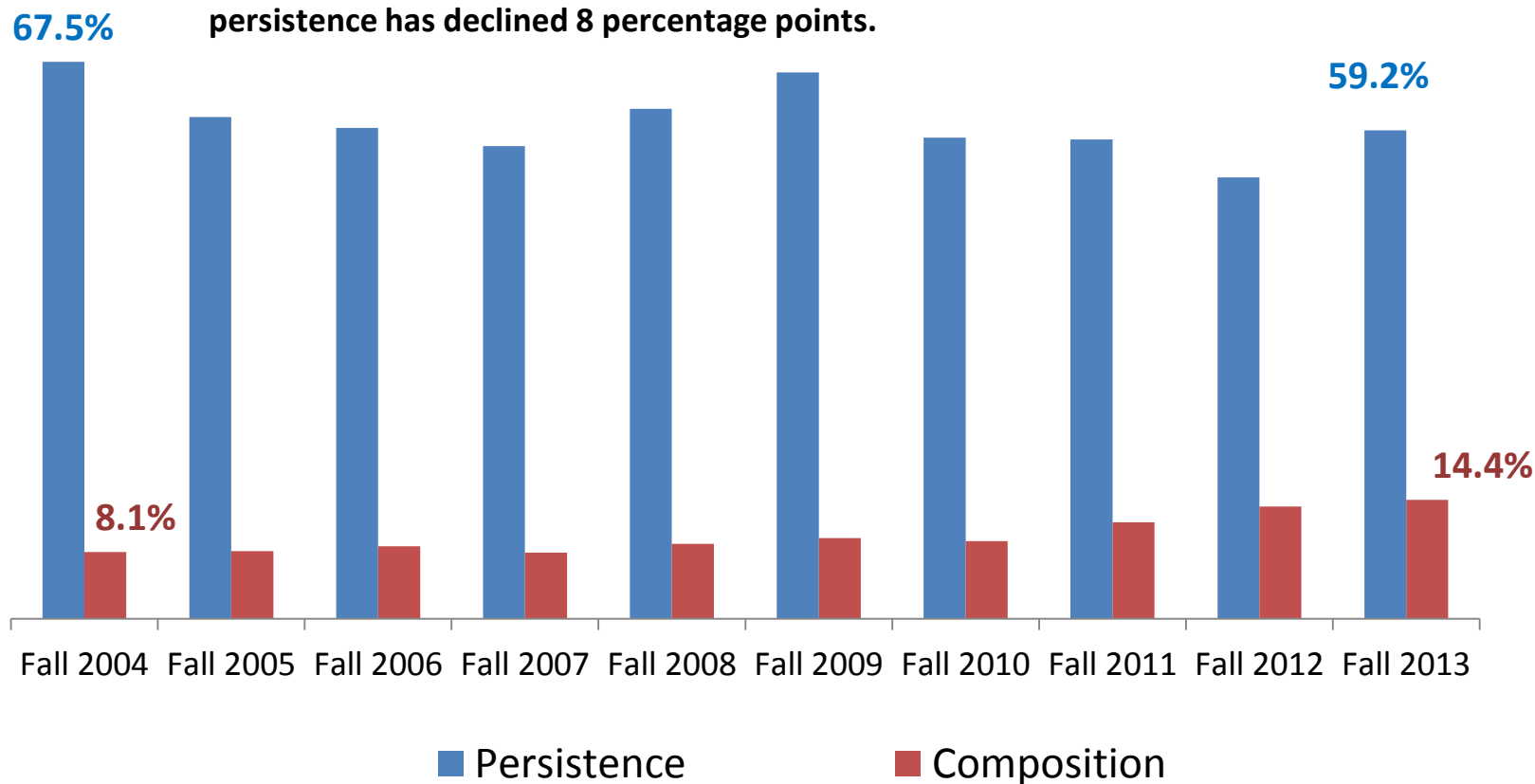
## Ten Year Look – UNDER REPRESENTED ETHNICITY/RACE



# Composition & Persistence of AtD COHORTS

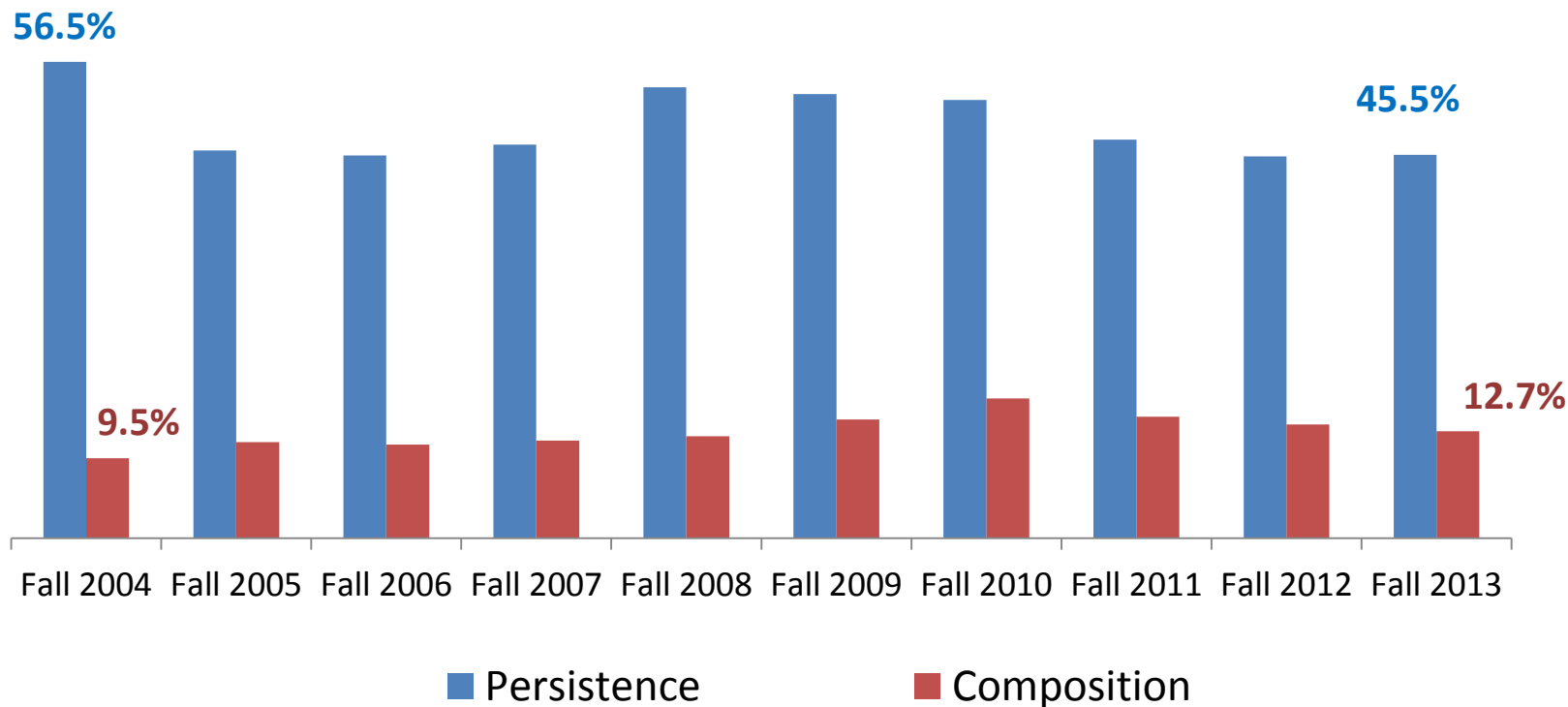
## Ten Year Look – HISPANIC/LATINO

Percent of total Cohort has increased over 6 percentage points while persistence has declined 8 percentage points.

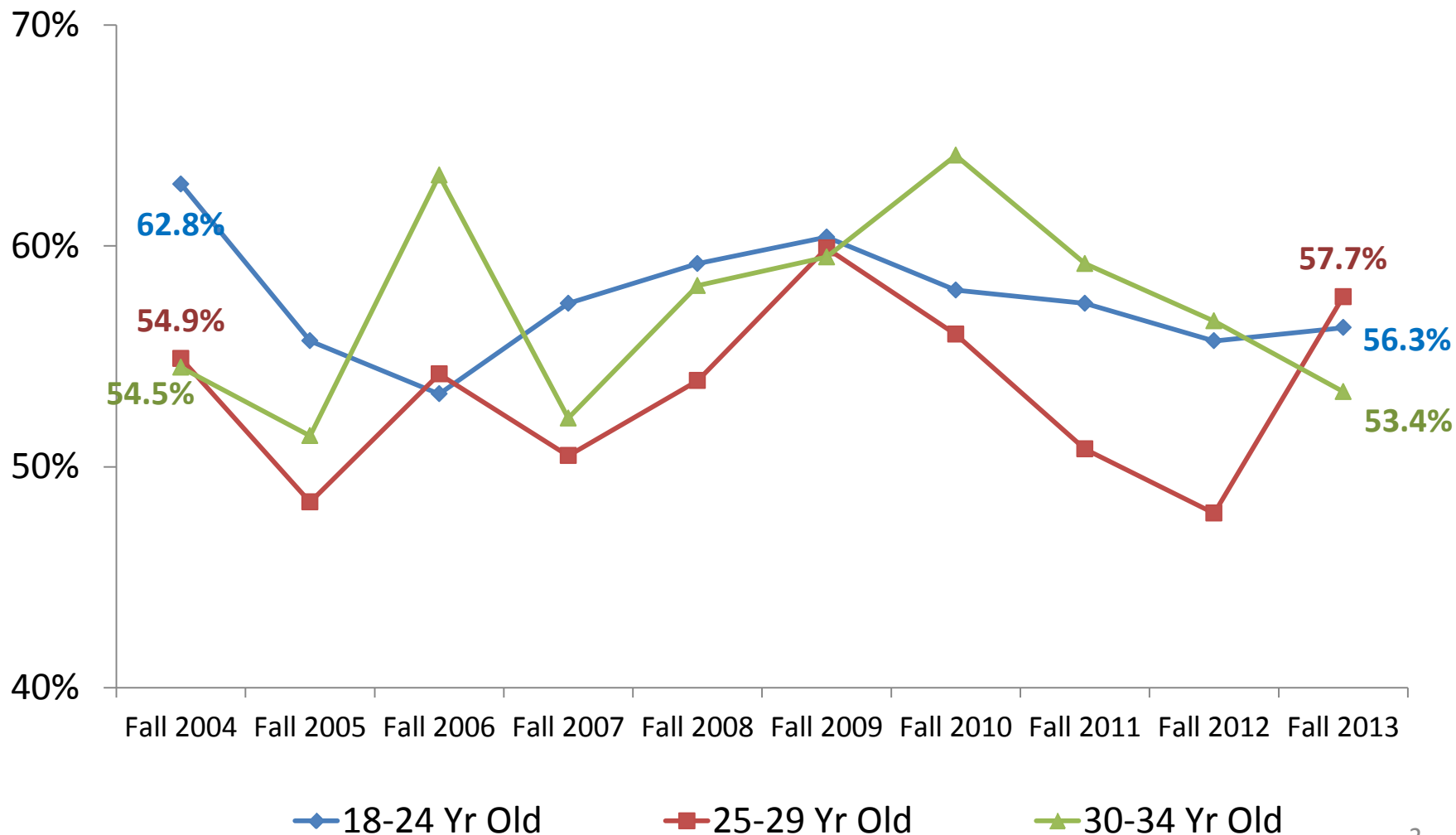


# Composition & Persistence of AtD COHORTS Ten Year Look – BLACK/AFRICAN AMERICAN

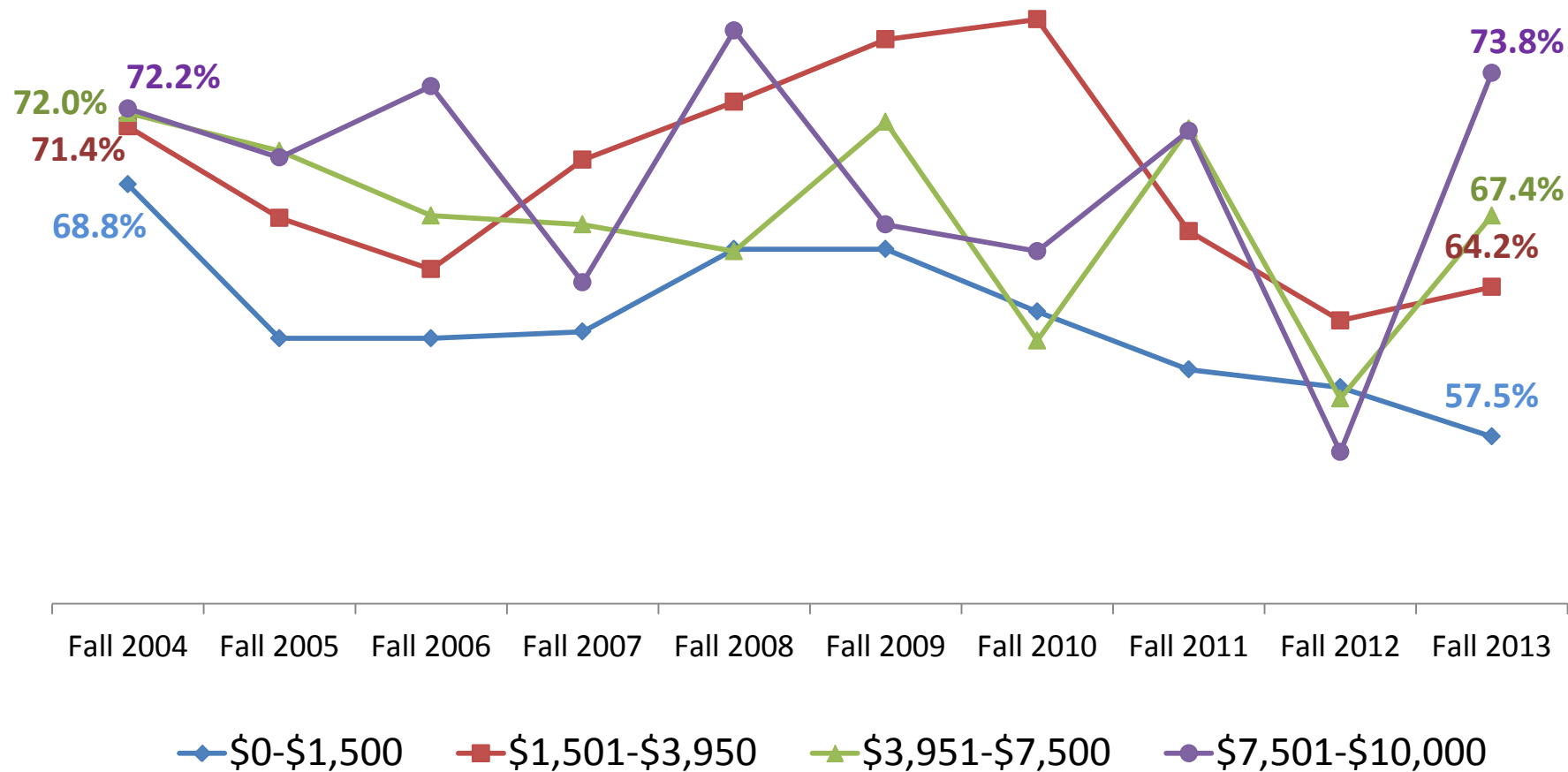
Percent of total Cohort has increased over 3 percentage points while persistence has declined 11 percentage points.



# Persistence of AtD COHORTS Ten Year Look – AGE GROUP

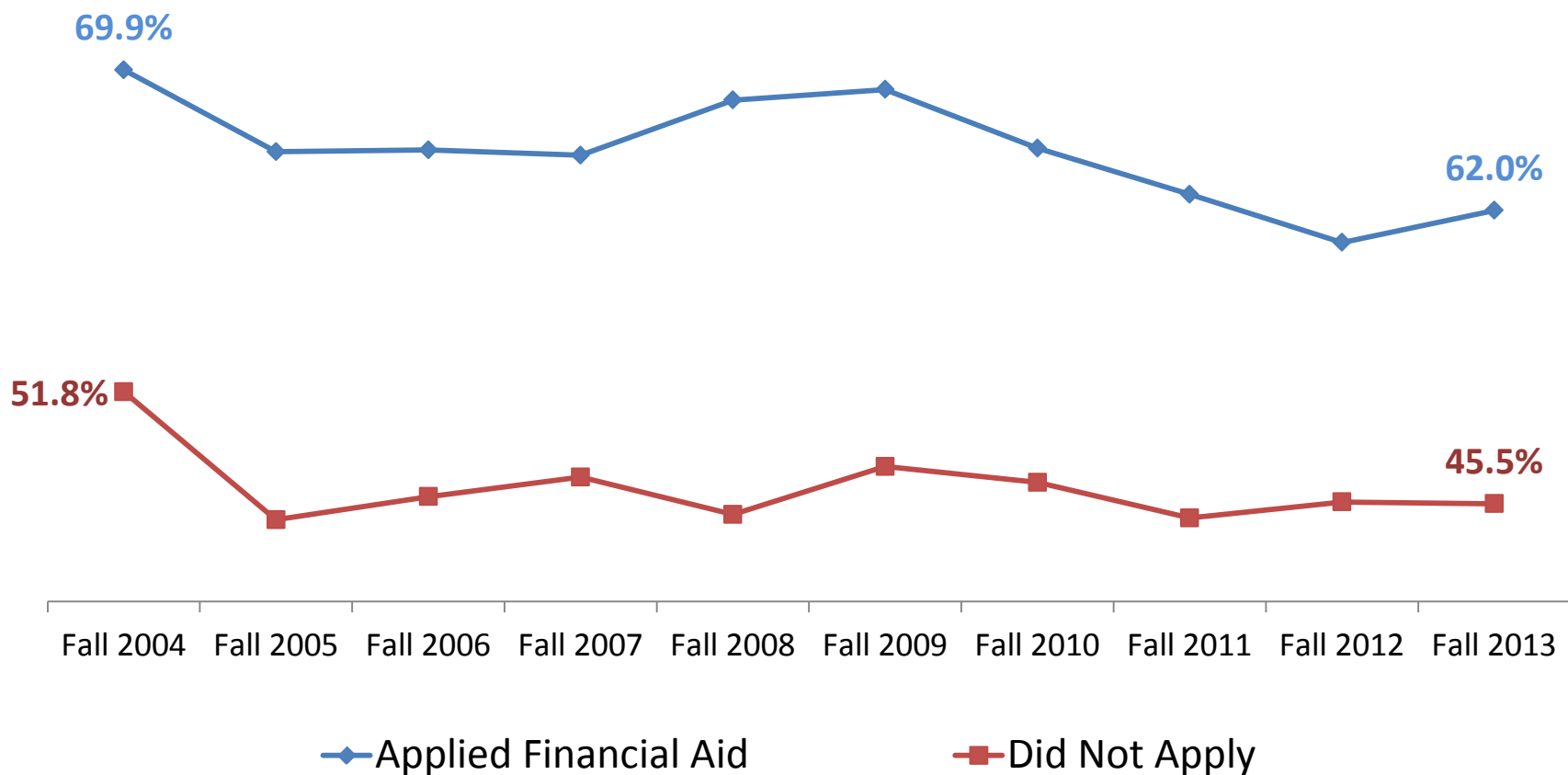


# Persistence of AtD COHORTS Ten Year Look – EFC GROUPS



# Persistence of AtD COHORTS

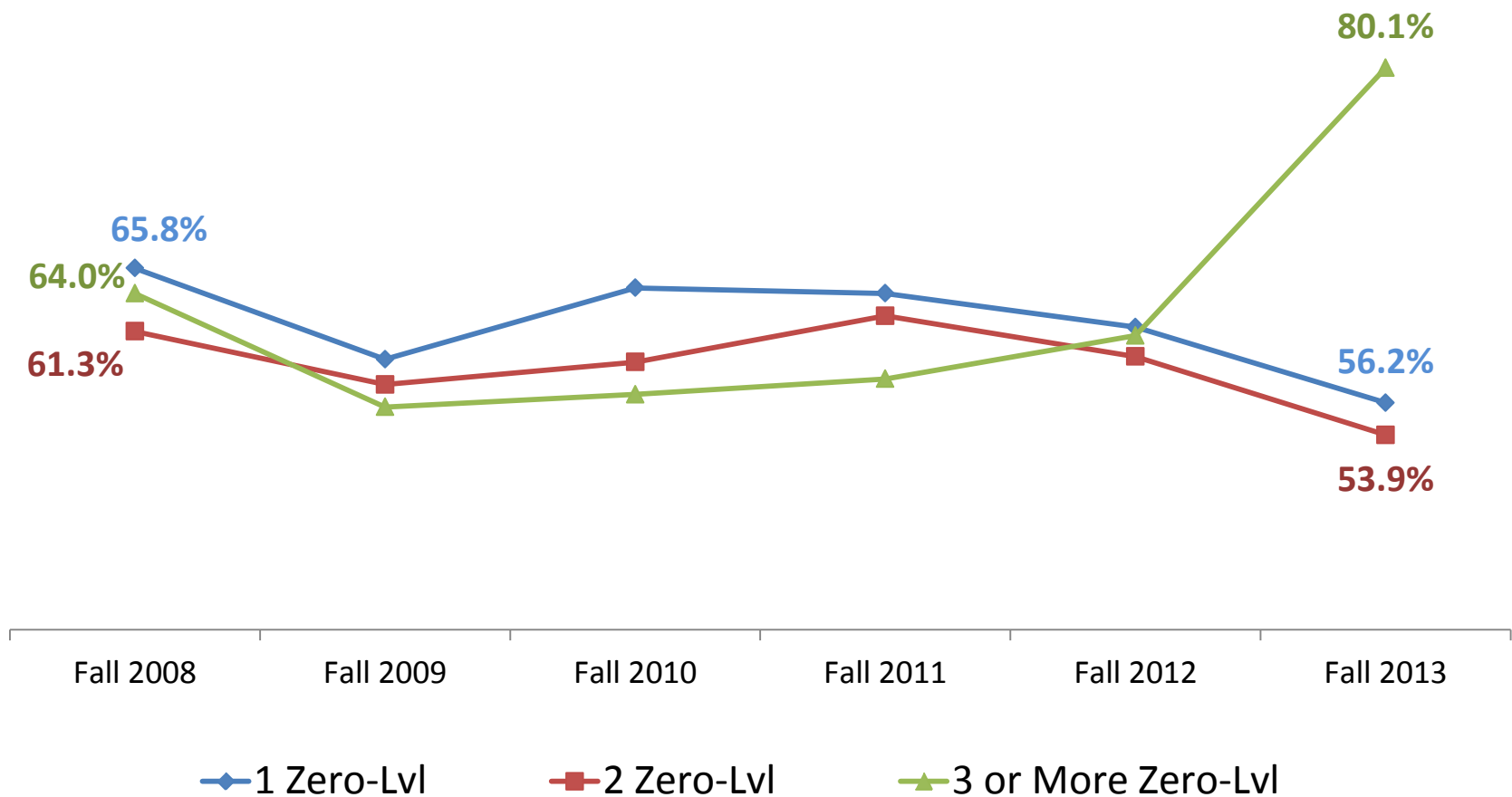
## Ten Year Look – Applied FinAid vs. Not Applied





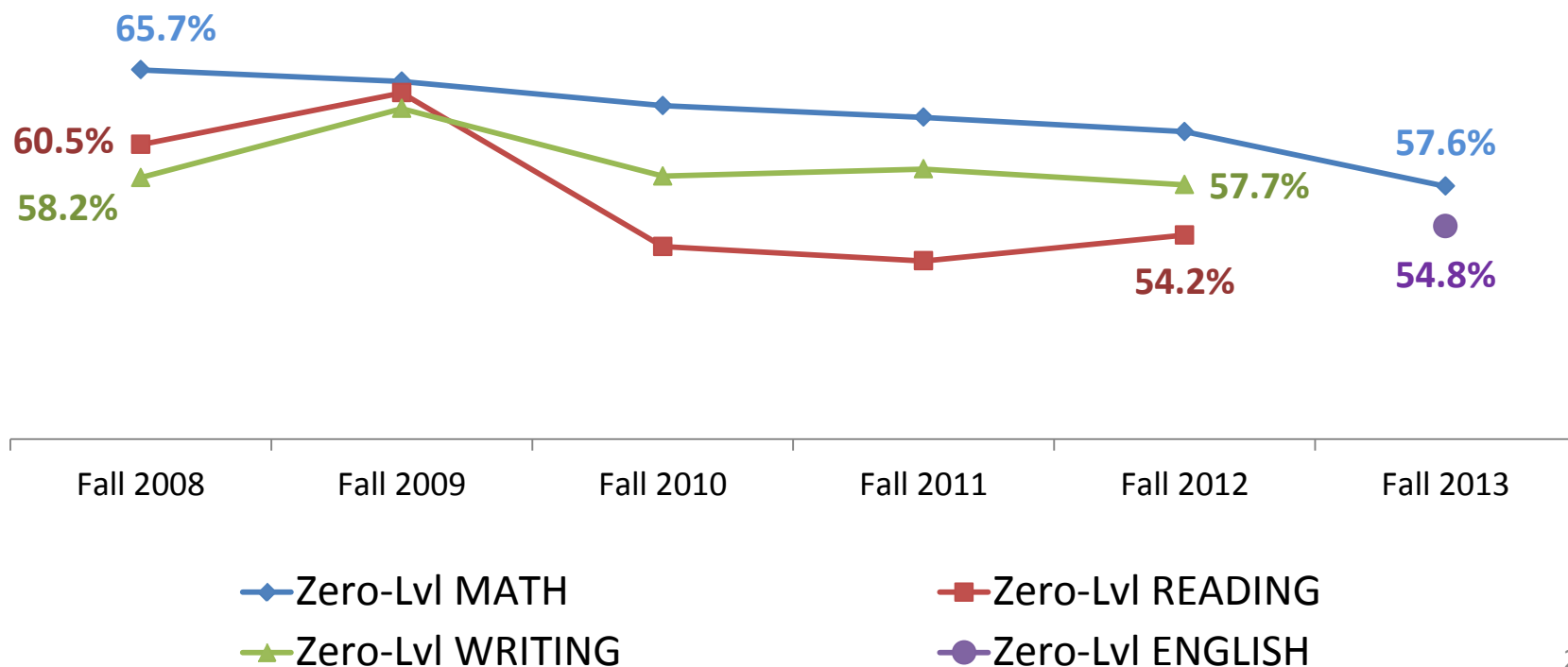
# Persistence of AtD COHORTS

## Six Year Look – Enrolled in Zero-Level Course(s)



# Persistence of AtD COHORTS

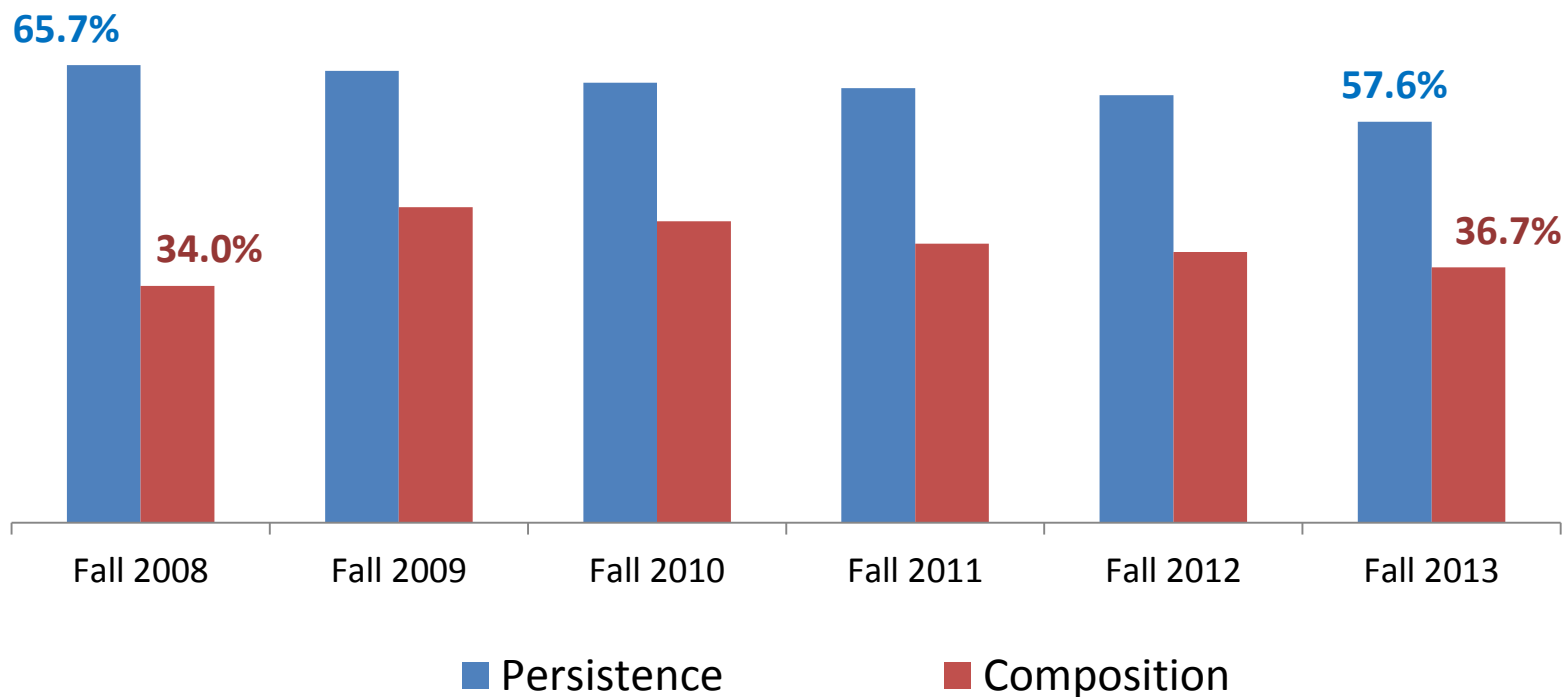
## Six Year Look – Enrolled in Zero-Level Course



# Composition & Persistence of AtD COHORTS

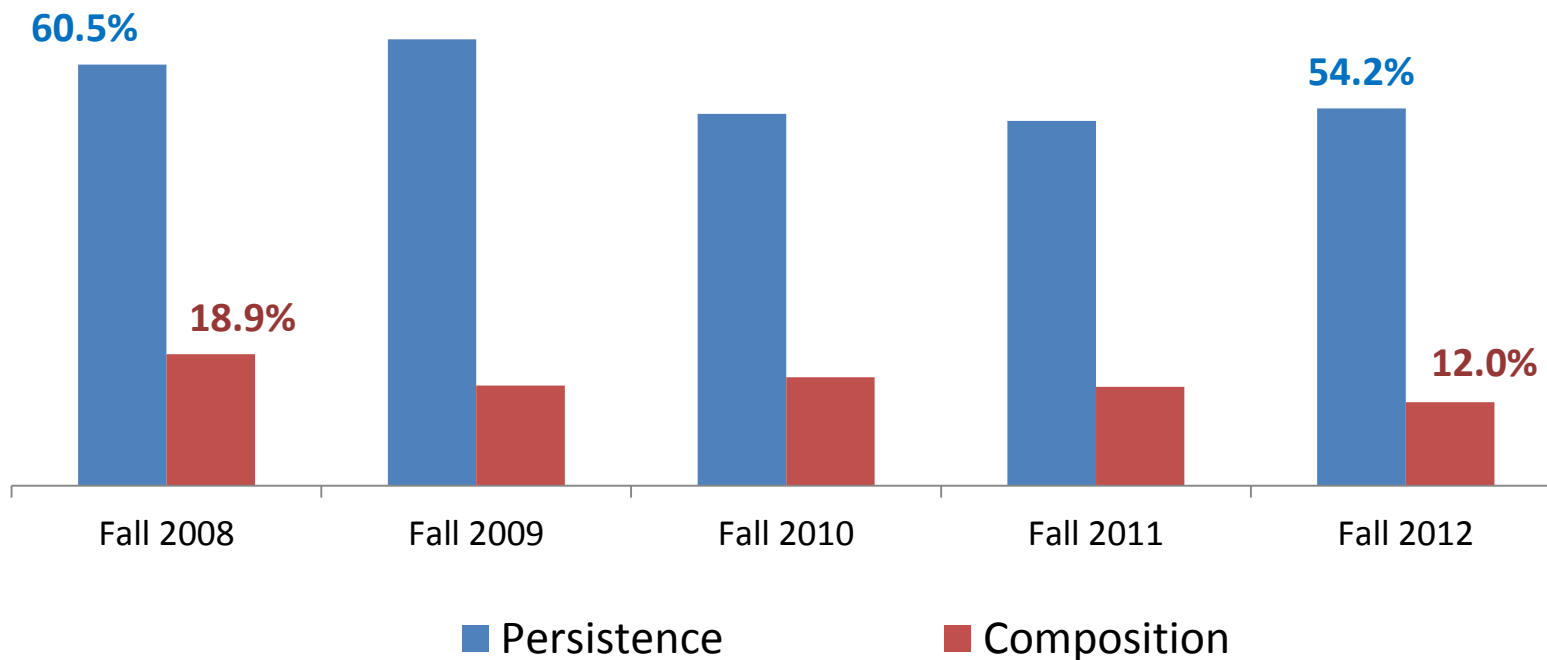
## Six Year Look – ENROLLED 0-LEVEL MATH

Percent of total Cohort has increased by almost 3 percentage points while persistence has decreased almost 8 percentage points.



# Composition & Persistence of AtD COHORTS Six Year Look – ENROLLED 0-LEVEL READING

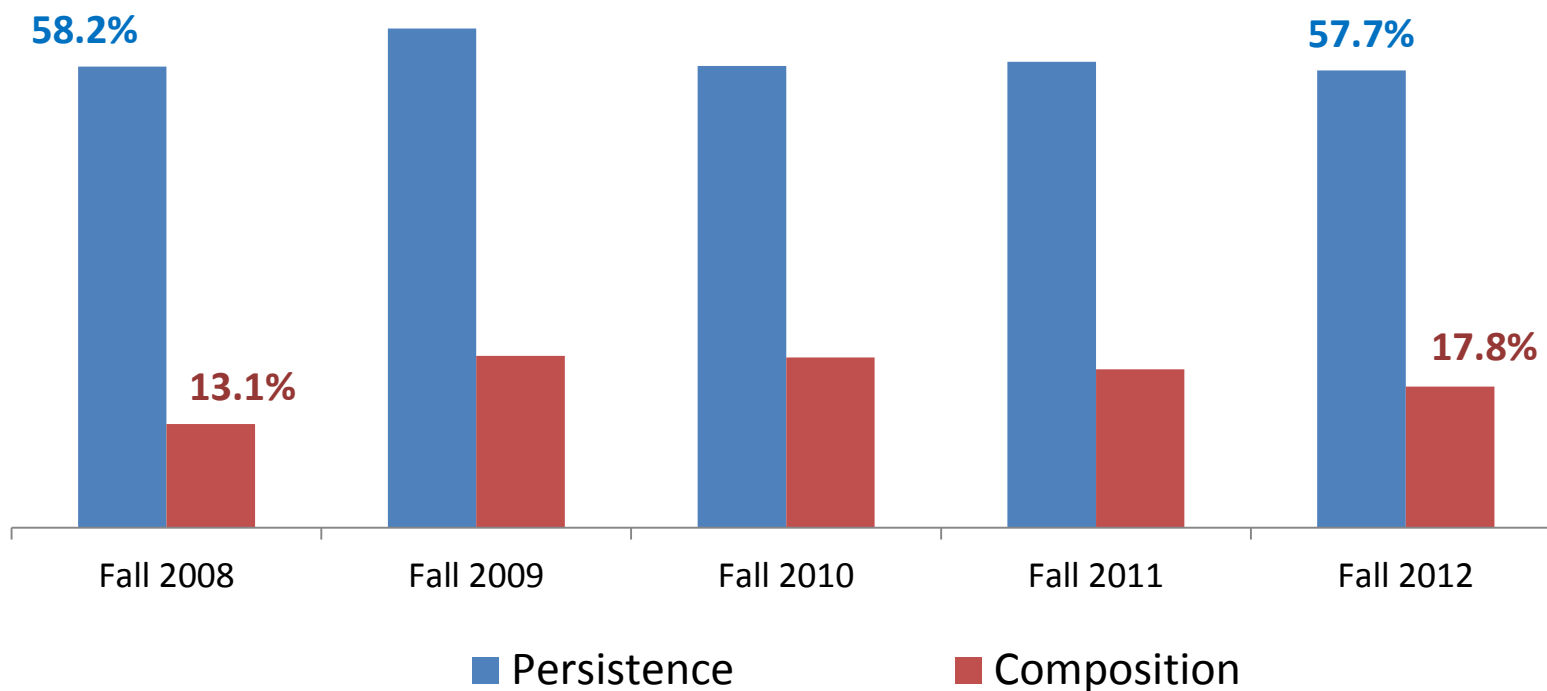
Percent of total Cohort has decreased by almost 7 percentage points and persistence has decreased 6 percentage points.



# Persistence of AtD COHORTS

## Six Year Look – ENROLLED 0-LEVEL WRITING

Percent of total Cohort has remained basically flat and persistence has increased over 4 percentage points.



# Persistence of AtD COHORTS

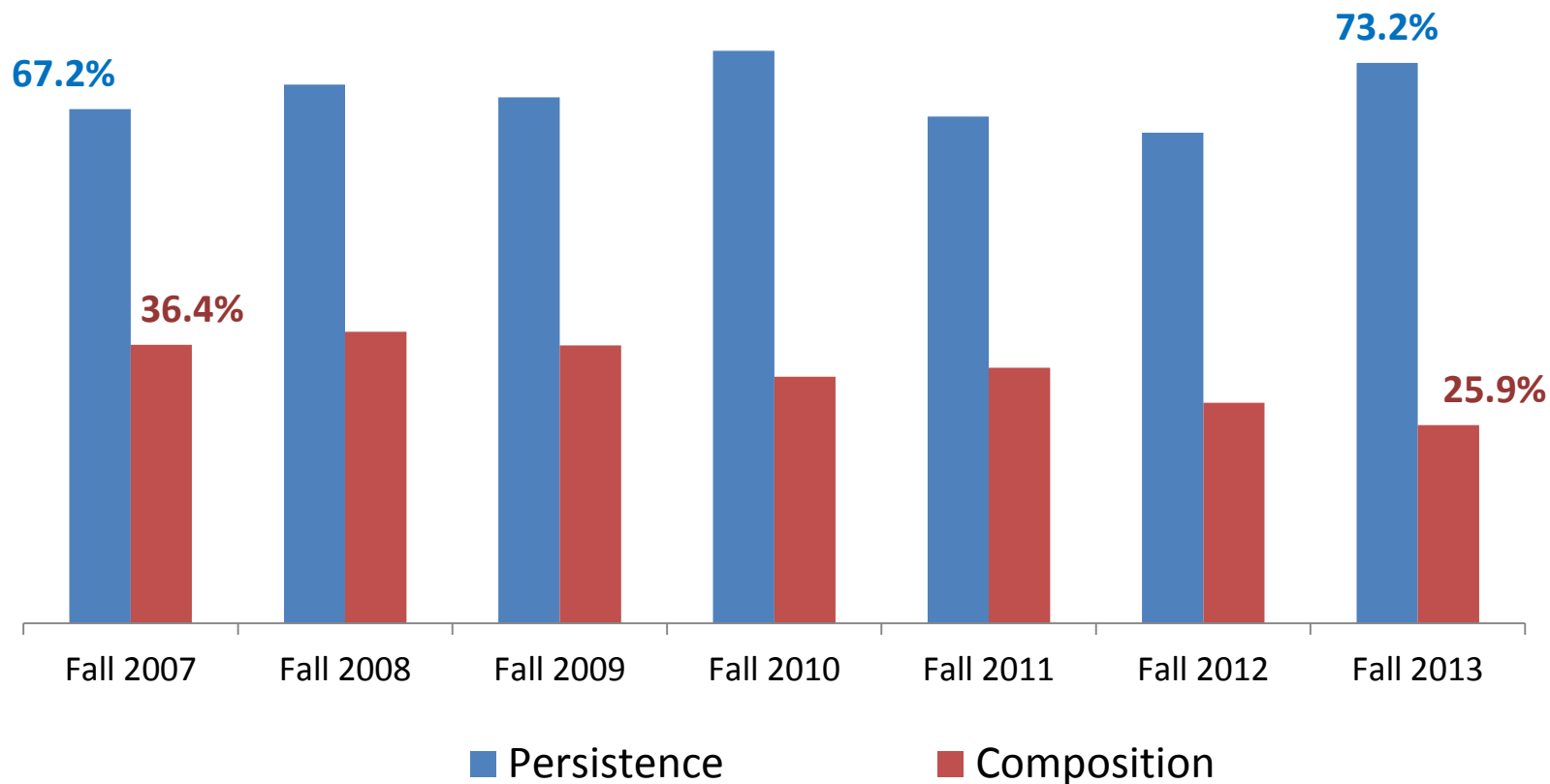
## Seven Year Look – Enrolled in SCL & Success



# Composition & Persistence of AtD COHORTS

## Seven Year Look – ENROLLED SCL

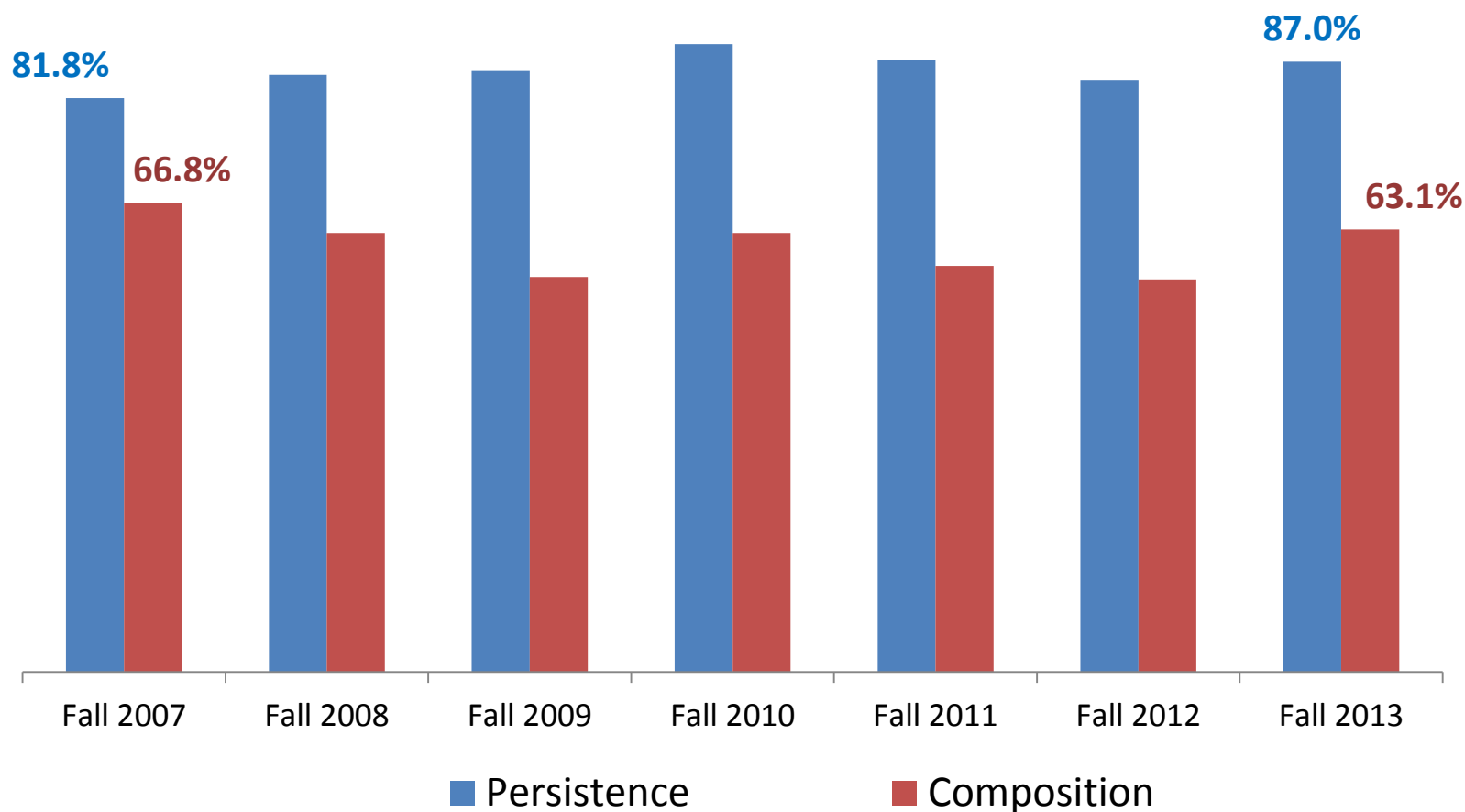
Percent of total Cohort has declined over 10 percentage points while persistence has increased 6 percentage points.



# Composition & Persistence of AtD COHORTS

## Seven Year Look – SUCCESSFUL IN SCL

Percent of Cohort enrolled in SCL who were successful has increased 5 percentage points while persistence has decreased slightly more than 3 percentage points.





## Persistence of Fall 2013 AtD Cohort

Fall 2013 Persistence Rates that increased more than 1 percentage point  
From the Overall Persistence Rate of 56.1%

25 – 29 Year Old – 57.7%	Enrolled in SCL Course – 73.2%
45 – 49 Year Old – 61.2%	Successfully completed SCL – 87.0%
Asian – 69.3%	Enrolled in 3 or More Zero Level Course – 80.1%
Hispanic/Latino – 59.2%	Enrolled in Math Zero-Level Course – 57.6%
Two or More Races – 63.0%	Started Fall in Good standing – 57.9%
Race Not Reported – 59.0%	High School Diploma – 57.6%
Full-Time – 69.9%	Unaccredited High School – 61.3%
All EFC Groups – 64.2% to 73.8%	OKC-Go! – 68.5% *
Applied for Financial Aid – 62.0%	New Students – 62.5%

Green text indicates 3 or more percentage point increase from Overall persistence

\* Indicates an increase for 2 or more consecutive years

## Persistence of Fall 2013 AtD Cohort

Fall 2013 persistence rates that declined more than 1 percentage point from the overall persistence rate of 56.1%

17 Year Old & Below – 54.7%*	GED – 49.1% *
30-34 Year Old – 53.4% *	No High School Credential – 44.3%
Black/African American – 45.5% *	Academic Standing Probation – 44.3%
Native American/Alaskan – 54.6%	Enrolled in 2 or more 0-Level – 53.9% *
Part-time – 45.6%	New Transfer – 45.8%
Did Not Apply for Financial Aid – 45.5%	

Red text indicates 3 or more percentage point decrease from Overall retention

\* Indicates a decline for 2 or more consecutive years

# WE DID IT!!! WE DID IT!!! WE DID IT!!!

Persistence is up 1.1  
percentage point!



We turned a 3 year  
trend into the  
beginning of an

trend!!