

# Complete College OCCC Data Overview Presentation II

Complete College OCCC  
Meeting Two

October 10<sup>th</sup>, 2012

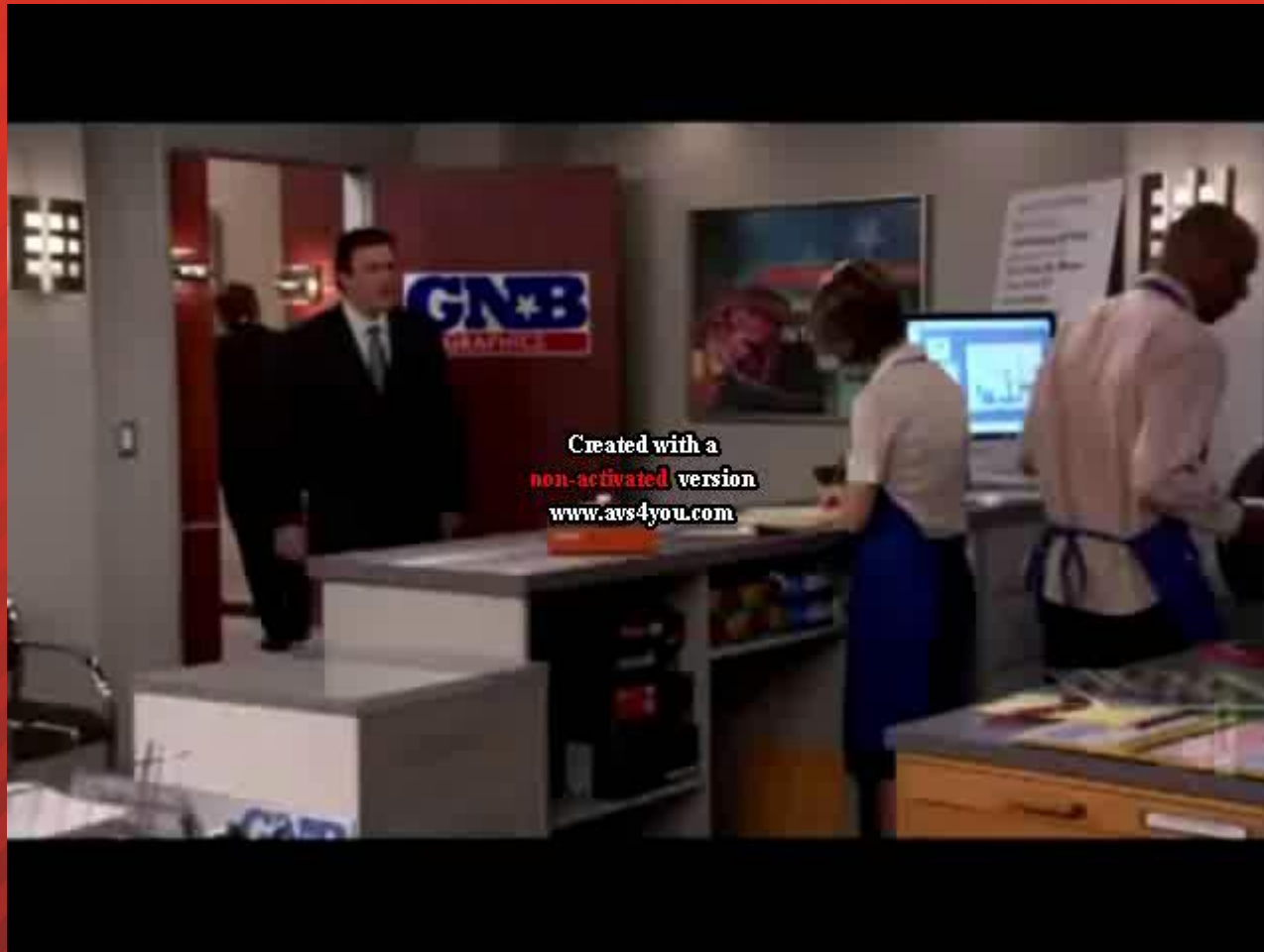
Office of Institutional Effectiveness

Email: [matthew.a.eastwood@occc.edu](mailto:matthew.a.eastwood@occc.edu)



NOW IS   
POWER

# Charts n' Graphs Video du Jour



NOW IS   
POWER



# Student Success Rates by Class Start Times

-----  
Fall 2008 thru Summer 2012 Populations

Start Time	Unsuccessful Students (D,F,U or W)	Successful Students (A,B,C or S)	Grand Total	Start Time	Unsuccessful Students (D,F,U or W)	Successful Students (A,B,C or S)
07:30AM	1,247	1,862	3,109	07:30AM	40.1%	<b>59.9%</b>
08:00AM	10,522	22,616	33,138	08:00AM	31.8%	<b>68.2%</b>
09:00AM	6,913	15,851	22,764	09:00AM	30.4%	<b>69.6%</b>
09:30AM	6,875	12,564	19,439	09:30AM	35.4%	<b>64.6%</b>
10:00AM	6,124	10,267	16,391	10:00AM	37.4%	<b>62.6%</b>
10:45AM	1,777	4,604	6,381	10:45AM	27.8%	<b>72.2%</b>
11:00AM	12,356	20,930	33,286	11:00AM	37.1%	<b>62.9%</b>
12:00PM	2,889	4,566	7,455	12:00PM	38.8%	<b>61.2%</b>
01:00PM	6,378	11,443	17,821	01:00PM	35.8%	<b>64.2%</b>
01:30PM	8,219	17,130	25,349	01:30PM	32.4%	<b>67.6%</b>
02:30PM	1,845	3,057	4,902	02:30PM	37.6%	<b>62.4%</b>
03:00PM	1,919	3,565	5,484	03:00PM	35.0%	<b>65.0%</b>
05:30PM	17,178	42,048	59,226	05:30PM	29.0%	<b>71.0%</b>
06:00PM	986	2,845	3,831	06:00PM	25.7%	<b>74.3%</b>
08:05PM	1,610	3,621	5,231	08:05PM	30.8%	<b>69.2%</b>
Grand Total	91,879	190,807	282,686	Grand Total	32.5%	<b>67.5%</b>

- ✓ Only class start times with a population greater than 3,000 have been included in the chart above.
- ✓ Data includes the sum of fiscal year enrollments from fall 2008 to summer 2012.

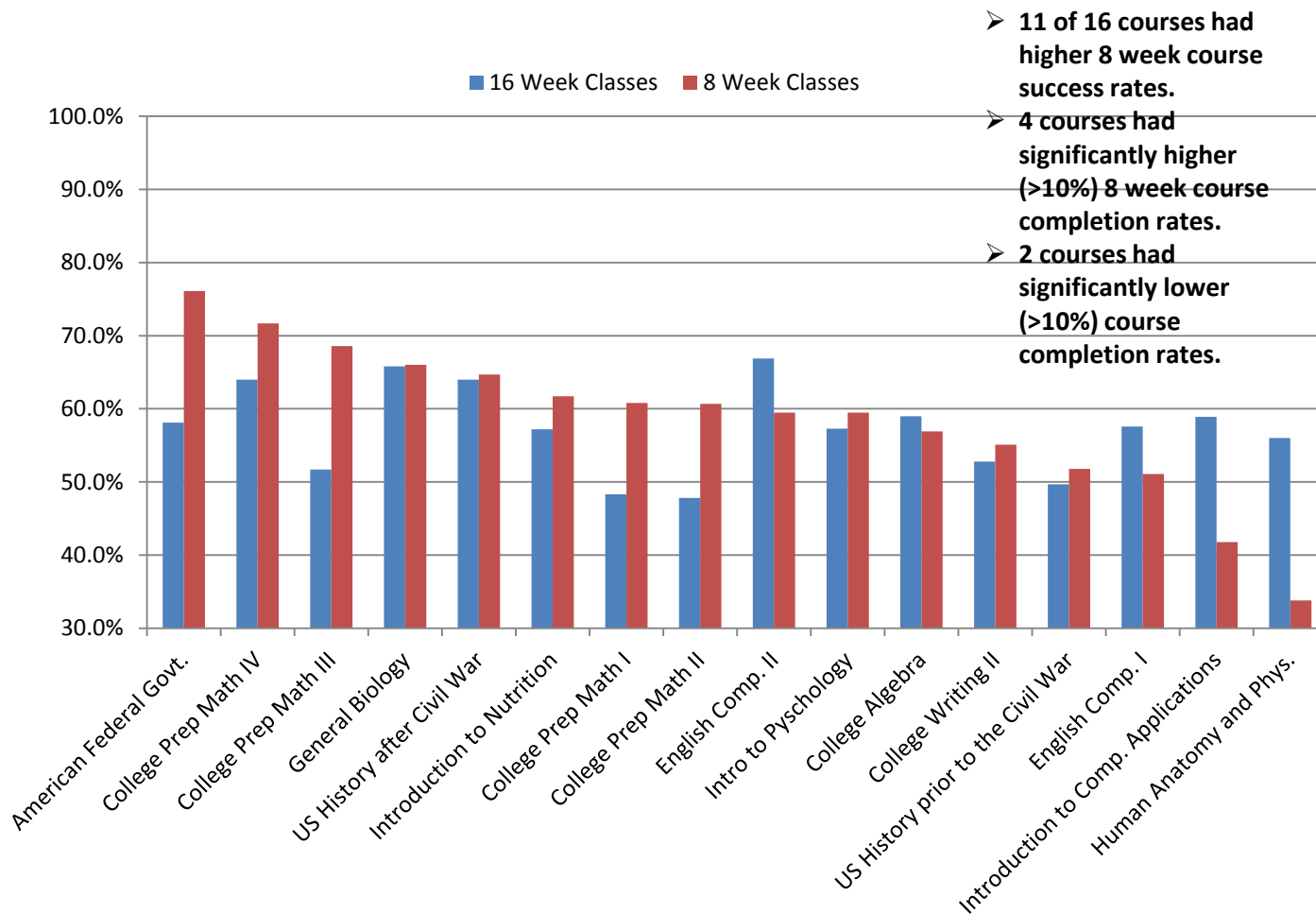


**NOW IS**   
**POWER**

# Student Success Rates – 8 Week and 16 Week Course Offerings

## Large 0 and 1000 Level Courses by the Percentage of Successful Students

(Success rates refer to those students who received a(n) A, B, C or S for a given course.)



✓ Figures represent the sum of the prior three fall and spring semesters of enrollments.

**NOW IS**   
**POWER**

# Student Success Rates – 8 & 16 Week Course Offerings

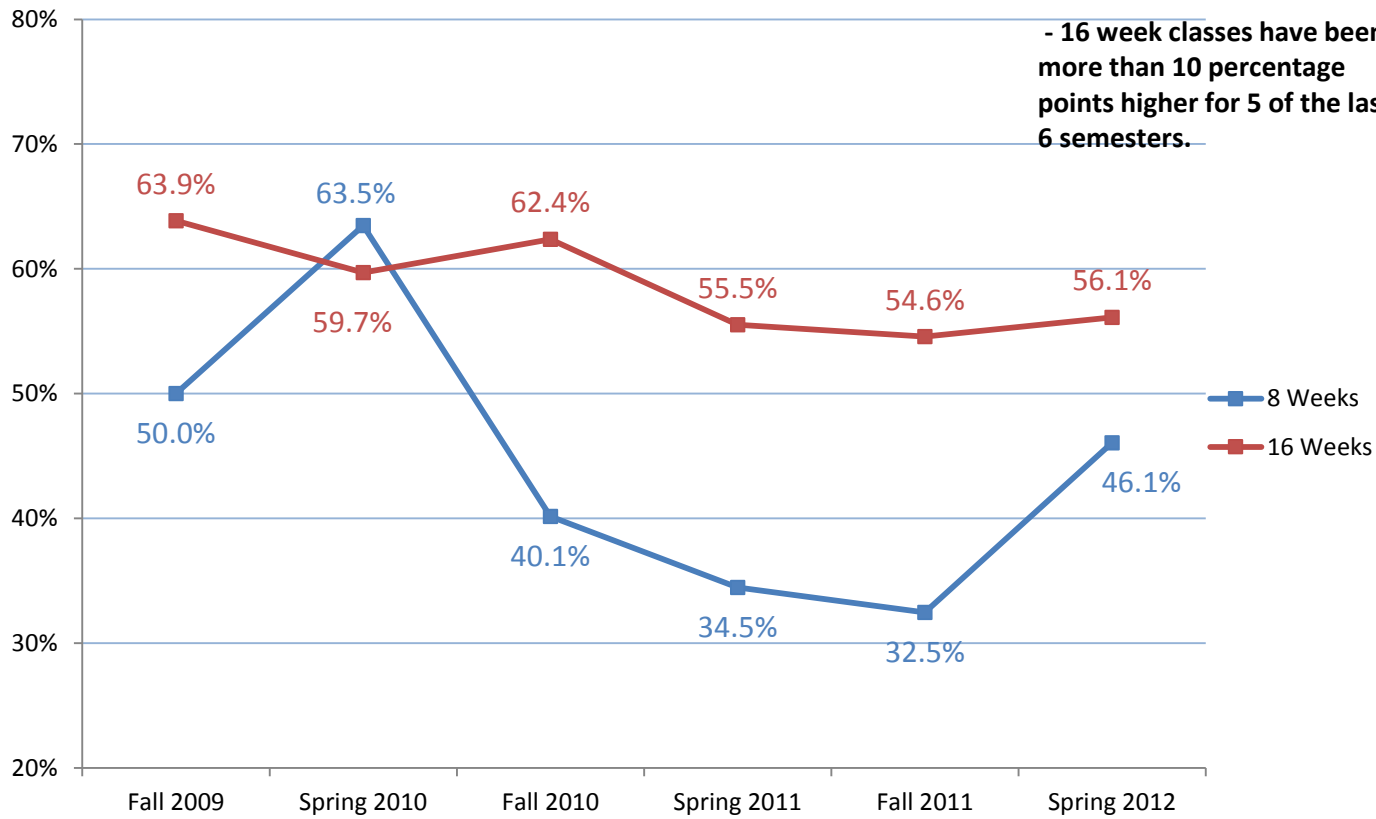
## Large 0 and 1000 Level Courses that Demonstrated Gaps in Success Outputs

(Eight week courses with populations <50 for any provided term have been removed from the analysis.)

### Introduction to Computers and Applications - CS-1103

Course Success Rates - A, B, C or S

- 16 week classes have been more than 10 percentage points higher for 5 of the last 6 semesters.



NOW IS  POWER



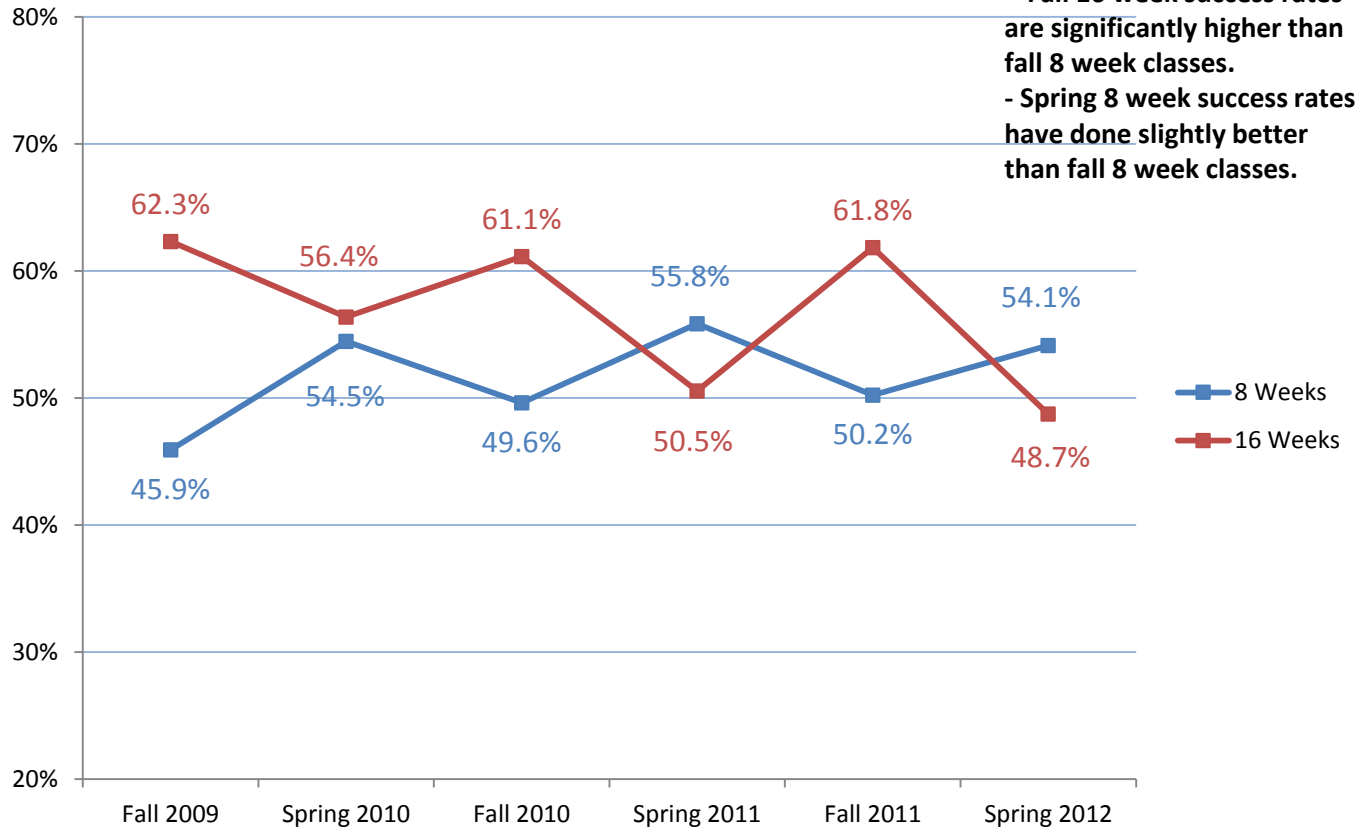
# Student Success Rates – 8 & 16 Week Course Offerings

## Large 0 and 1000 Level Courses that Demonstrated Gaps in Success Outputs

(Eight week courses with populations <50 for any provided term have been removed from the analysis.)

### English Composition I - ENGL-1113

Course Success Rates - A, B, C or S



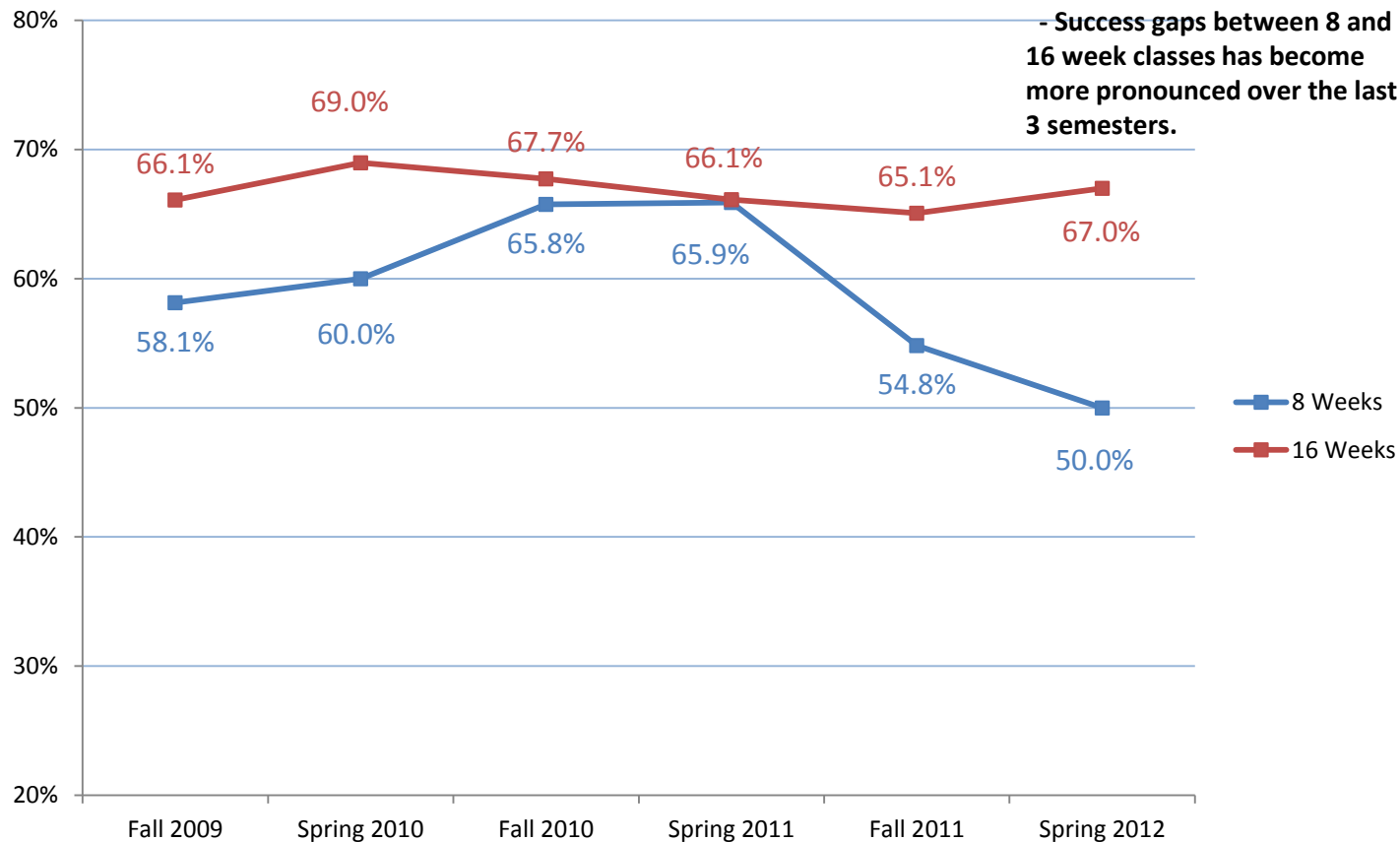
NOW IS  POWER

# Student Success Rates – 8 & 16 Week Course Offerings

## Large 0 and 1000 Level Courses that Demonstrated Gaps in Success Outputs

(Eight week courses with populations <50 for any provided term have been removed from the analysis.)

**English Composition II - ENGL-1213**  
Course Success Rates - A, B, C or S



**NOW IS**   
**POWER**

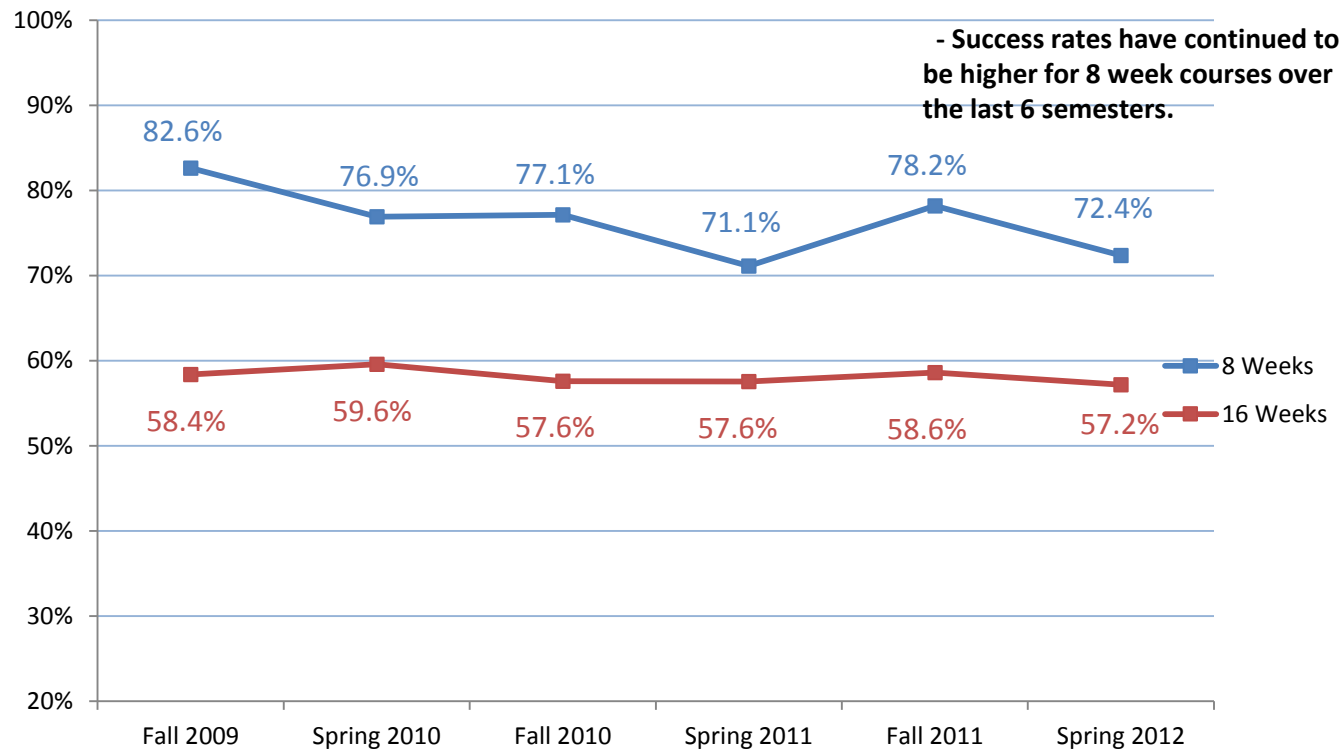
# Student Success Rates – 8 & 16 Week Course Offerings

## Large 0 and 1000 Level Courses that Demonstrated Gaps in Success Outputs

(Eight week courses with populations <50 for any provided term have been removed from the analysis.)

### American Federal Government - POLSC-1113

Course Success Rates - A, B, C or S



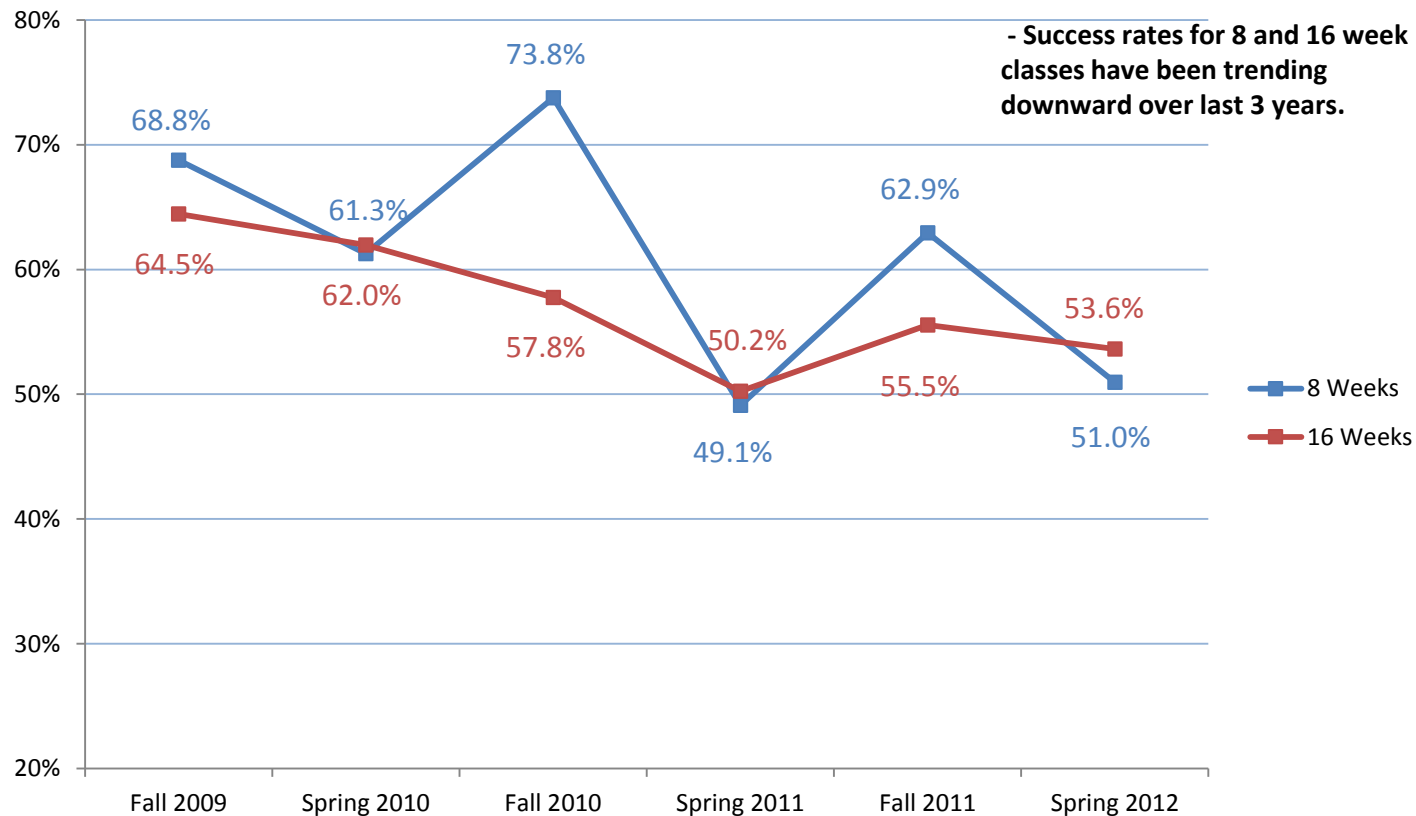


# Student Success Rates – 8 & 16 Week Course Offerings Large 0 and 1000 Level Courses that Demonstrated Gaps in Success Outputs

(Eight week courses with populations <50 for any provided term have been removed from the analysis.)

## Introduction to Psychology - PSY-1113

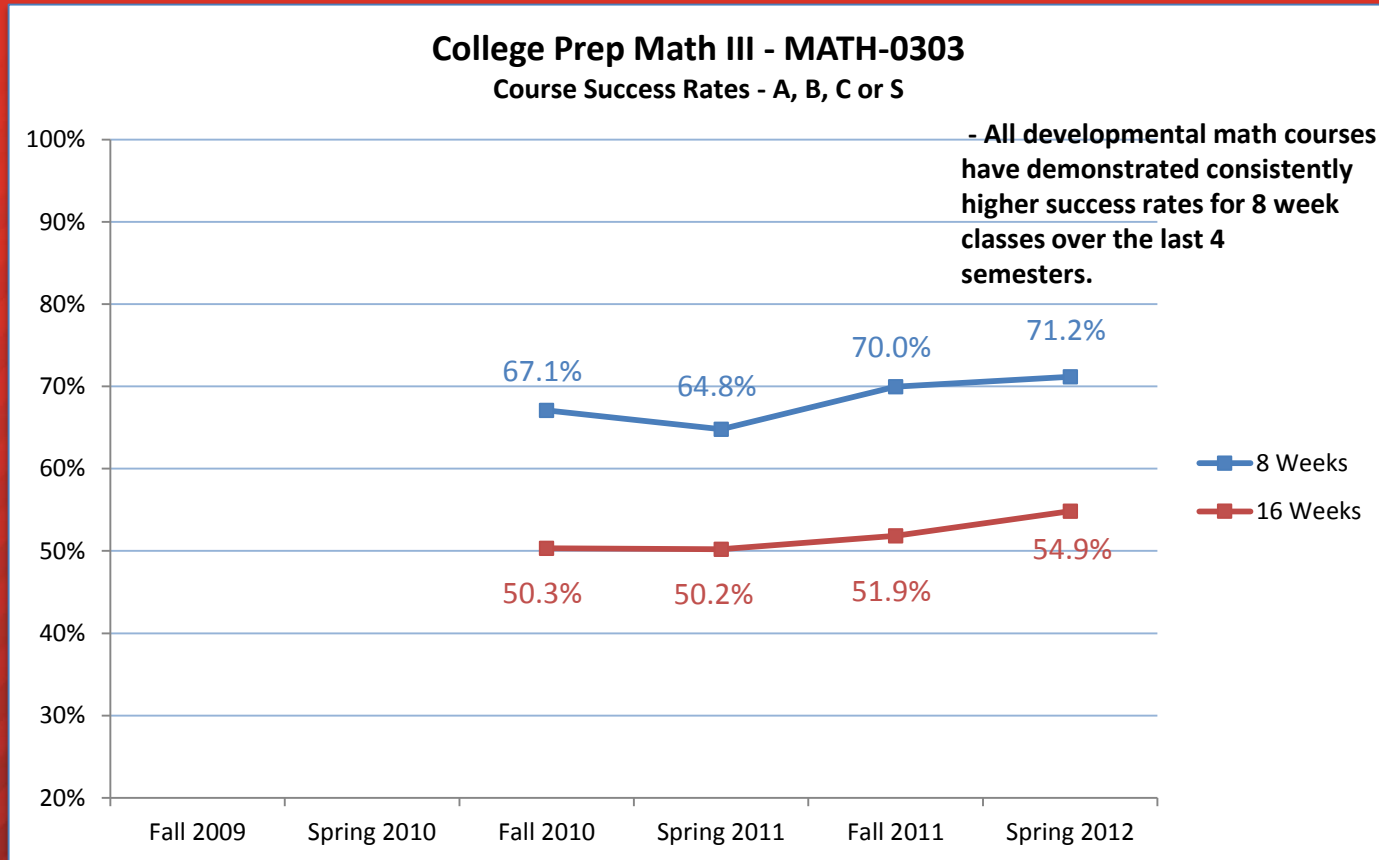
Course Success Rates - A, B, C or S



## Student Success Rates – 8 & 16 Week Course Offerings

### Large 0 and 1000 Level Courses that Demonstrated Gaps in Success Outputs

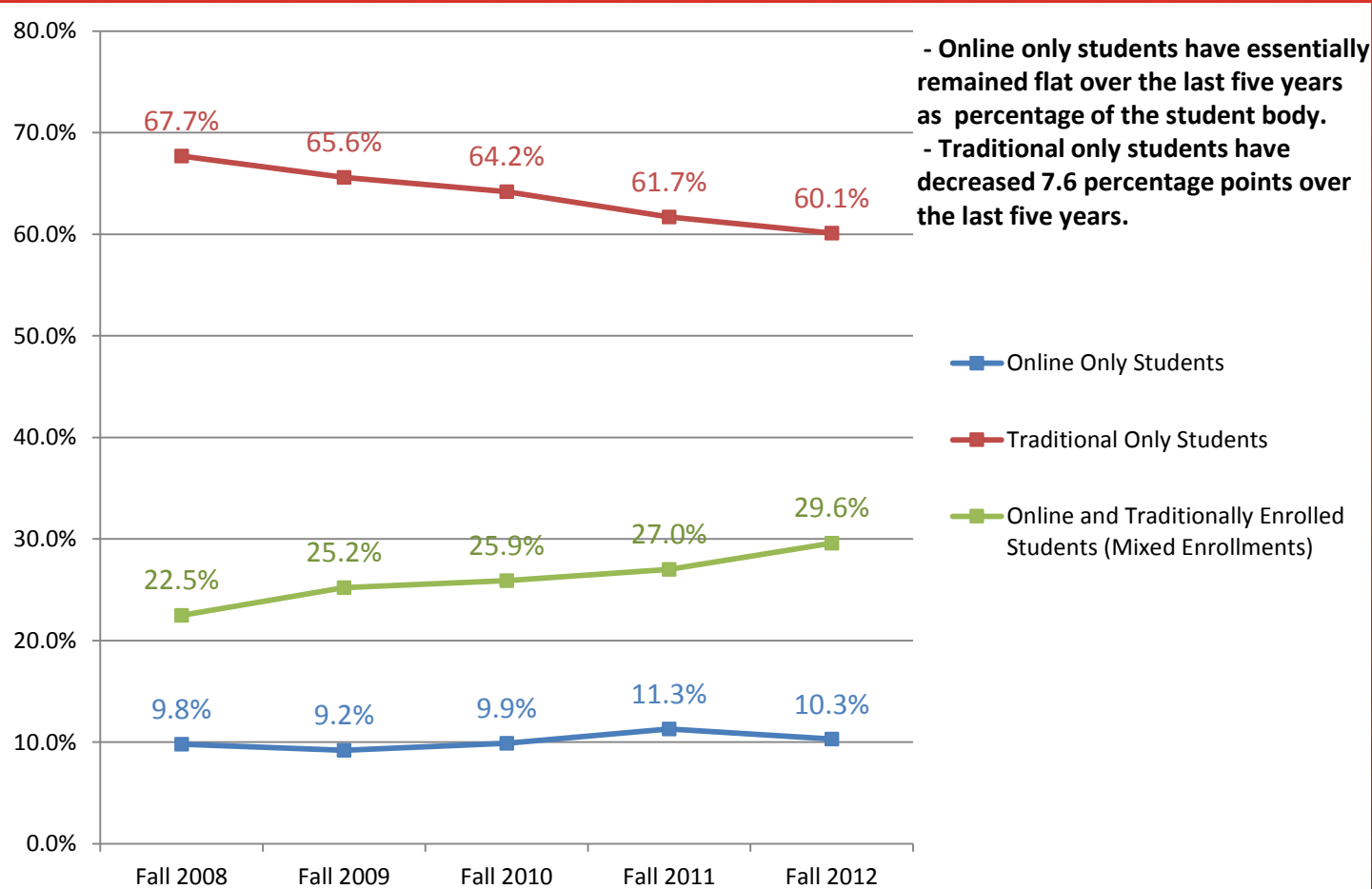
(Eight week courses with populations <50 for any provided term have been removed from the analysis.)



NOW IS  POWER

# OCCC Student Compositions - Five Year Fall Trend – Online and Traditional Student Enrollment Patterns

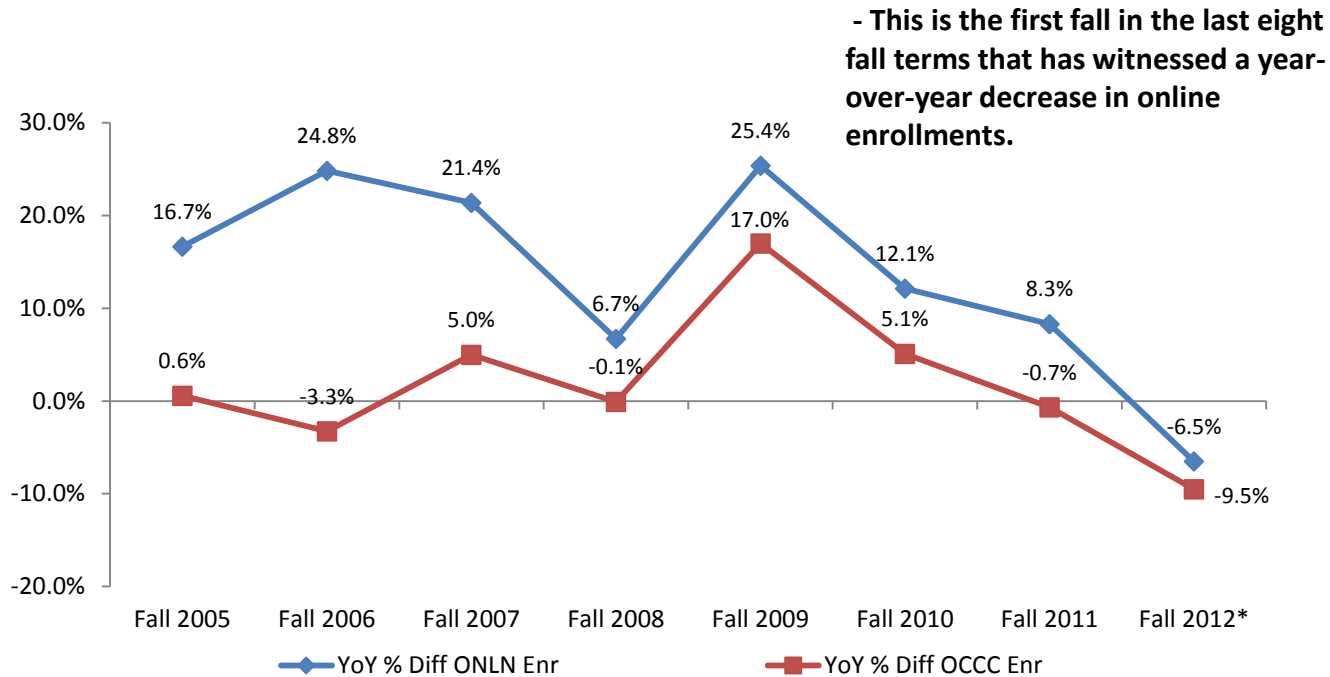
(Data was gathered from enrollment numbers for October 1<sup>st</sup>, 2012 and all corresponding dates in past fall terms.)



**NOW IS  
POWER**



## COMPARISON OF ENROLLMENTS FOR ONLINE ONLY AND TOTAL OCCC Year Over Year (YoY) Difference for 8 Fall Semesters



FY 2012 comparison is as of Aug. 21, 2012 vs. Aug 23, Aug 2011

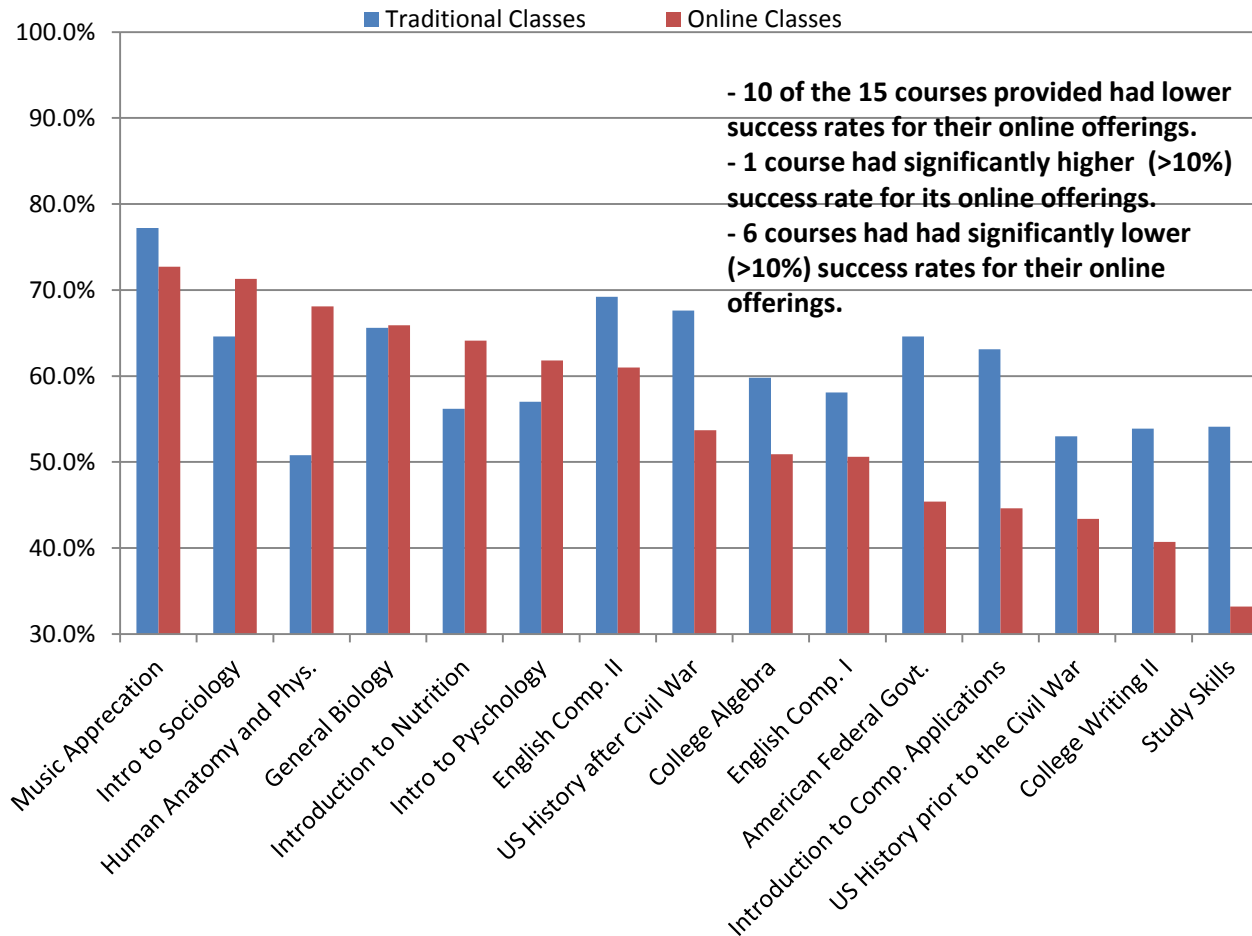


NOW IS   
POWER

# Student Success Rates – Traditional and Online Course Offerings

## Large 0 and 1000 Level Courses by the Percentage of Successful Students

(Success rates refer to those students who received a(n) A, B, C or S for a given course.)



- ✓ Figures represent the sum of the prior three fall and spring semesters of enrollments.
- ✓ Large courses without online enrollments were not included in this analysis.

**NOW IS**   
**POWER**

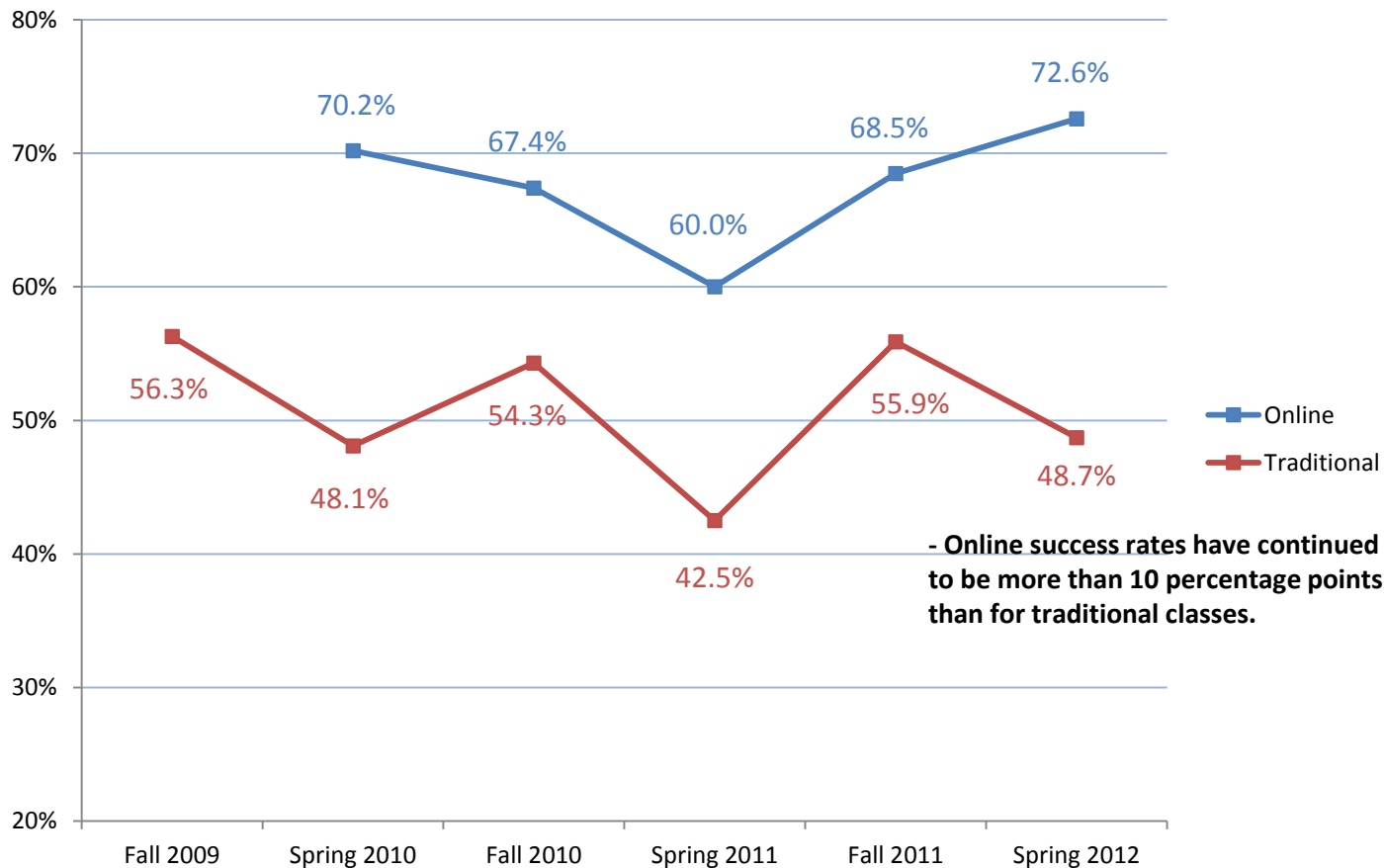
# Student Success Rates – Online and Traditional Course Offerings

## Large 0 and 1000 Level Courses that Demonstrated Gaps in Success Outputs

(Online classes with populations <50 for any provided term have been removed from the analysis.)

### Human Anatomy and Physiology I – BIO-1314

Course Success Rates - A, B, C or S



**NOW IS**   
**POWER**



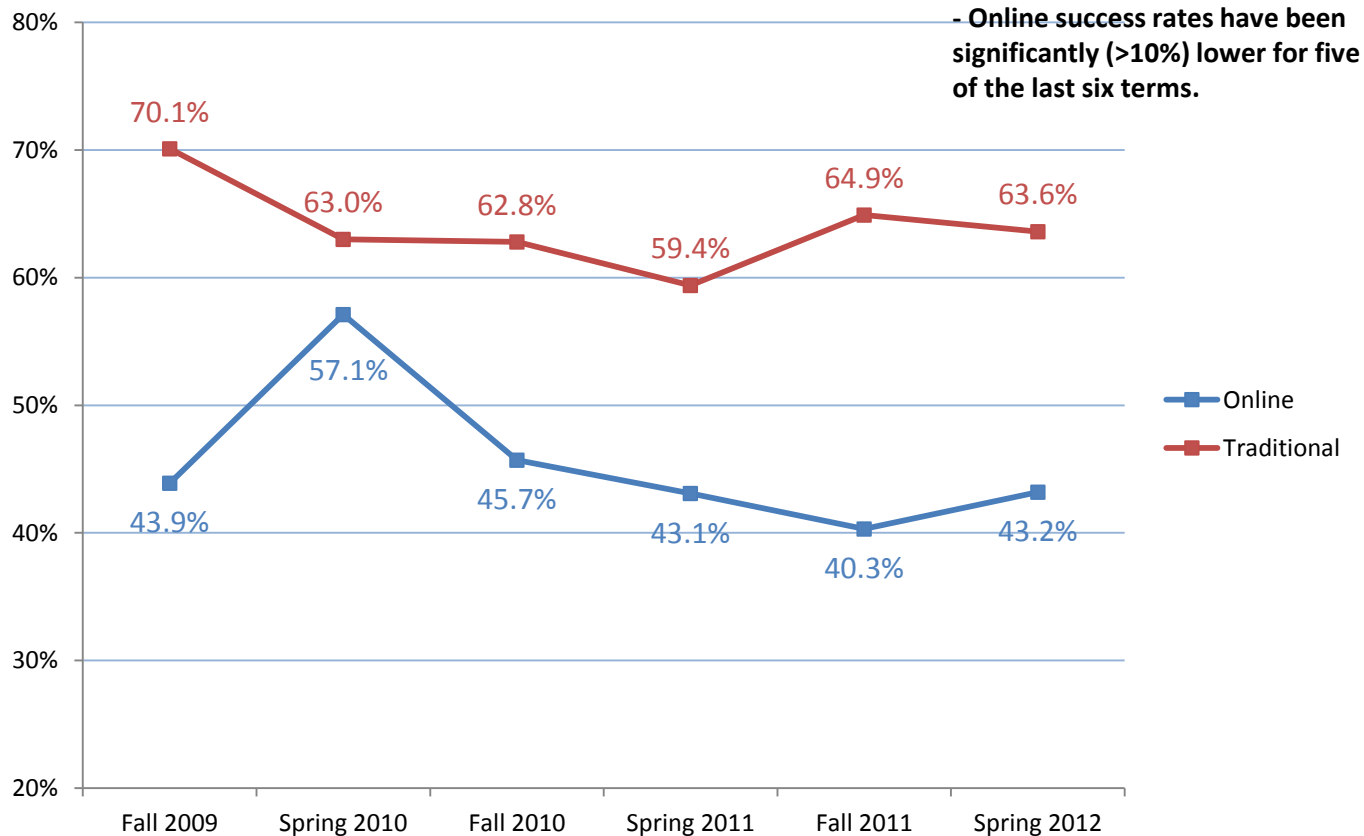
# Student Success Rates – Online and Traditional Course Offerings

## Large 0 and 1000 Level Courses that Demonstrated Gaps in Success Outputs

(Online classes with populations <50 for any provided term have been removed from the analysis.)

### Introduction to Computers and Applications - CS-1103

Course Success Rates - A, B, C or S



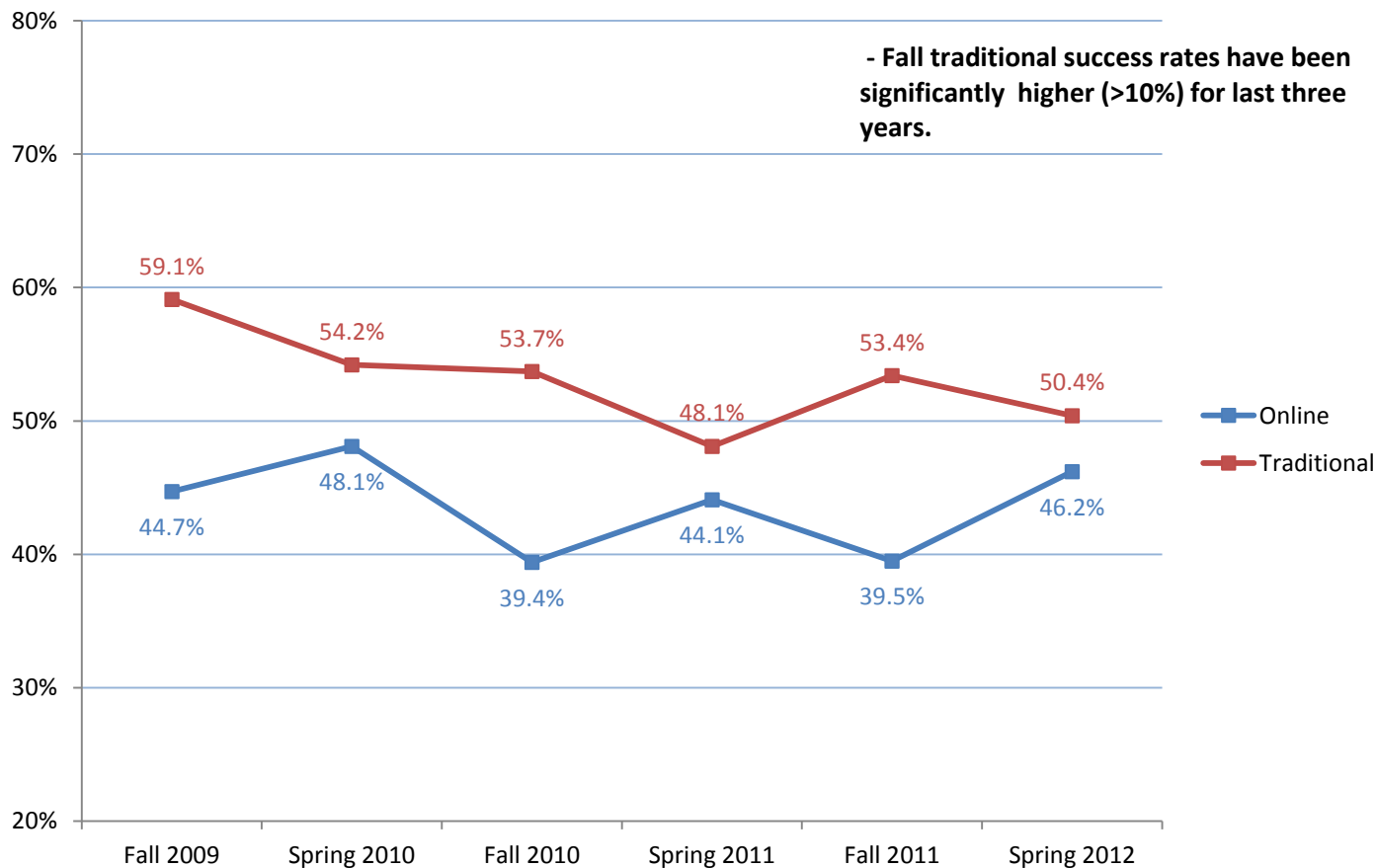
NOW IS  POWER

# Student Success Rates – Online and Traditional Course Offerings

## Large 0 and 1000 Level Courses that Demonstrated Gaps in Success Outputs

(Online classes with populations <50 for any provided term have been removed from the analysis.)

**U.S. History to the Civil War**  
Course Success Rates - A, B, C or S



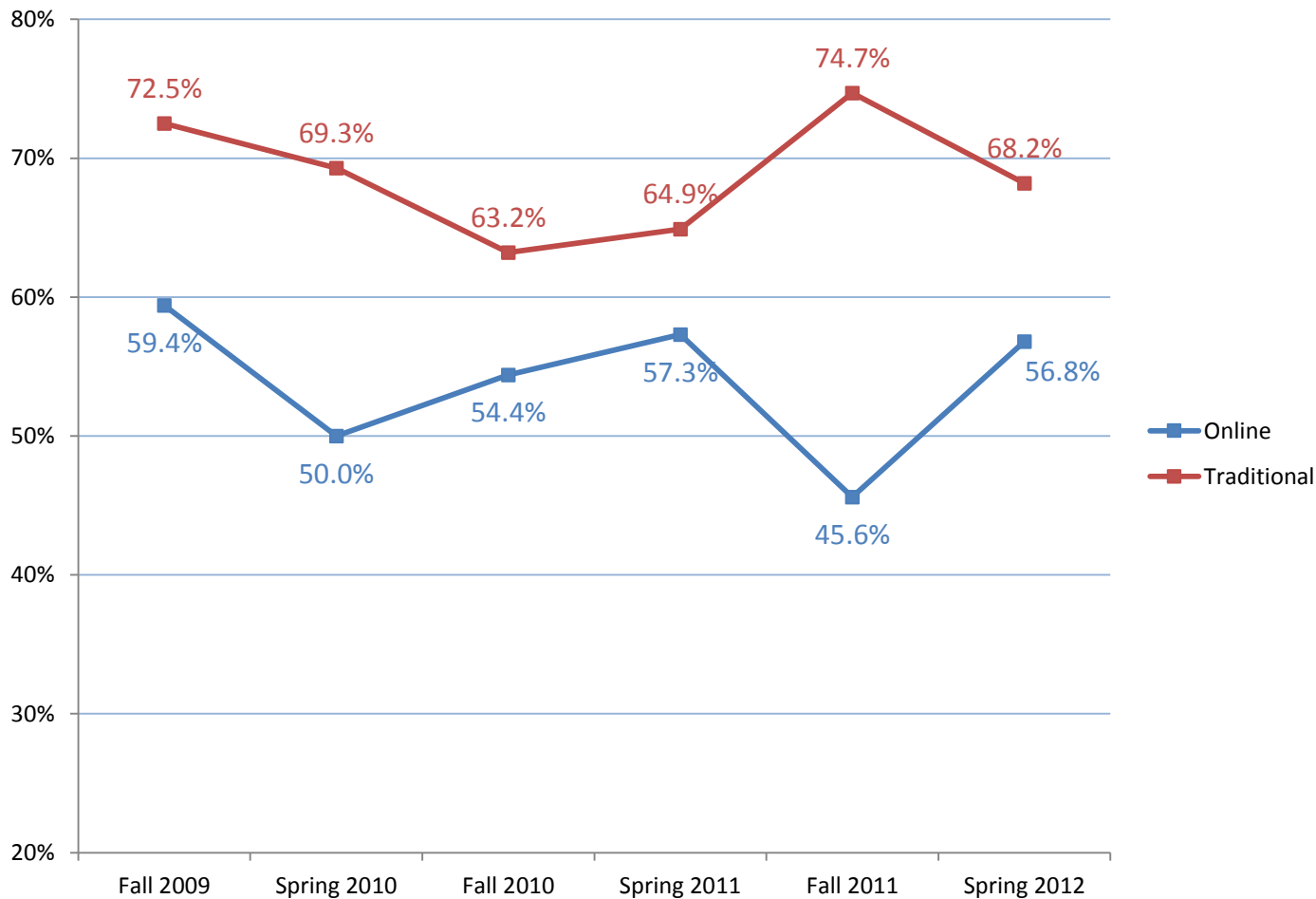
**NOW IS**   
**POWER**

# Student Success Rates – Online and Traditional Course Offerings

## Large 0 and 1000 Level Courses that Demonstrated Gaps in Success Outputs

(Online classes with populations <50 for any provided term have been removed from the analysis.)

**U.S. History since the Civil War – HIST-1493**  
Course Success Rates - A, B, C or S



**NOW IS**   
**POWER**



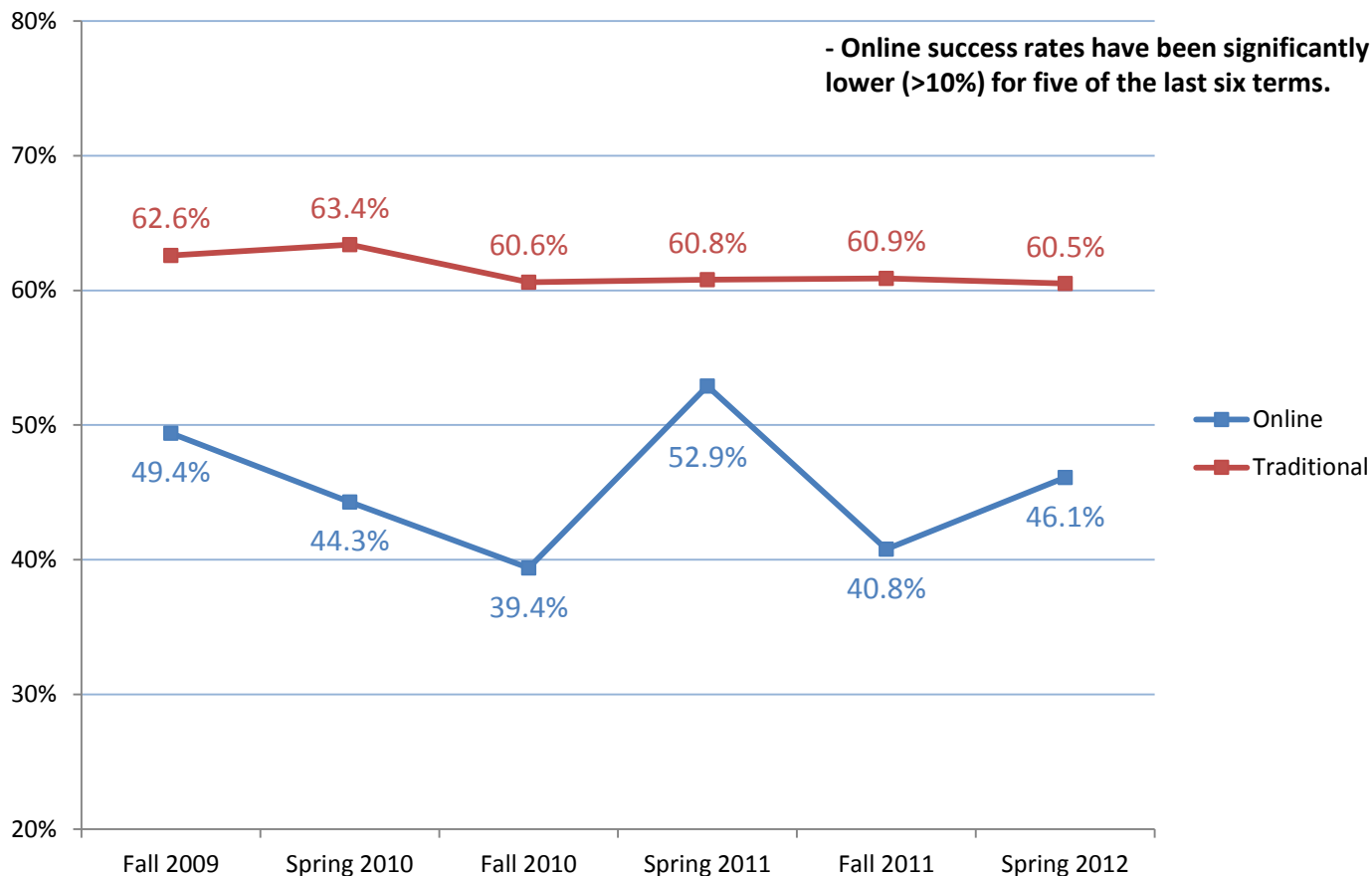
# Student Success Rates – Online and Traditional Course Offerings

## Large 0 and 1000 Level Courses that Demonstrated Gaps in Success Outputs

(Online classes with populations <50 for any provided term have been removed from the analysis.)

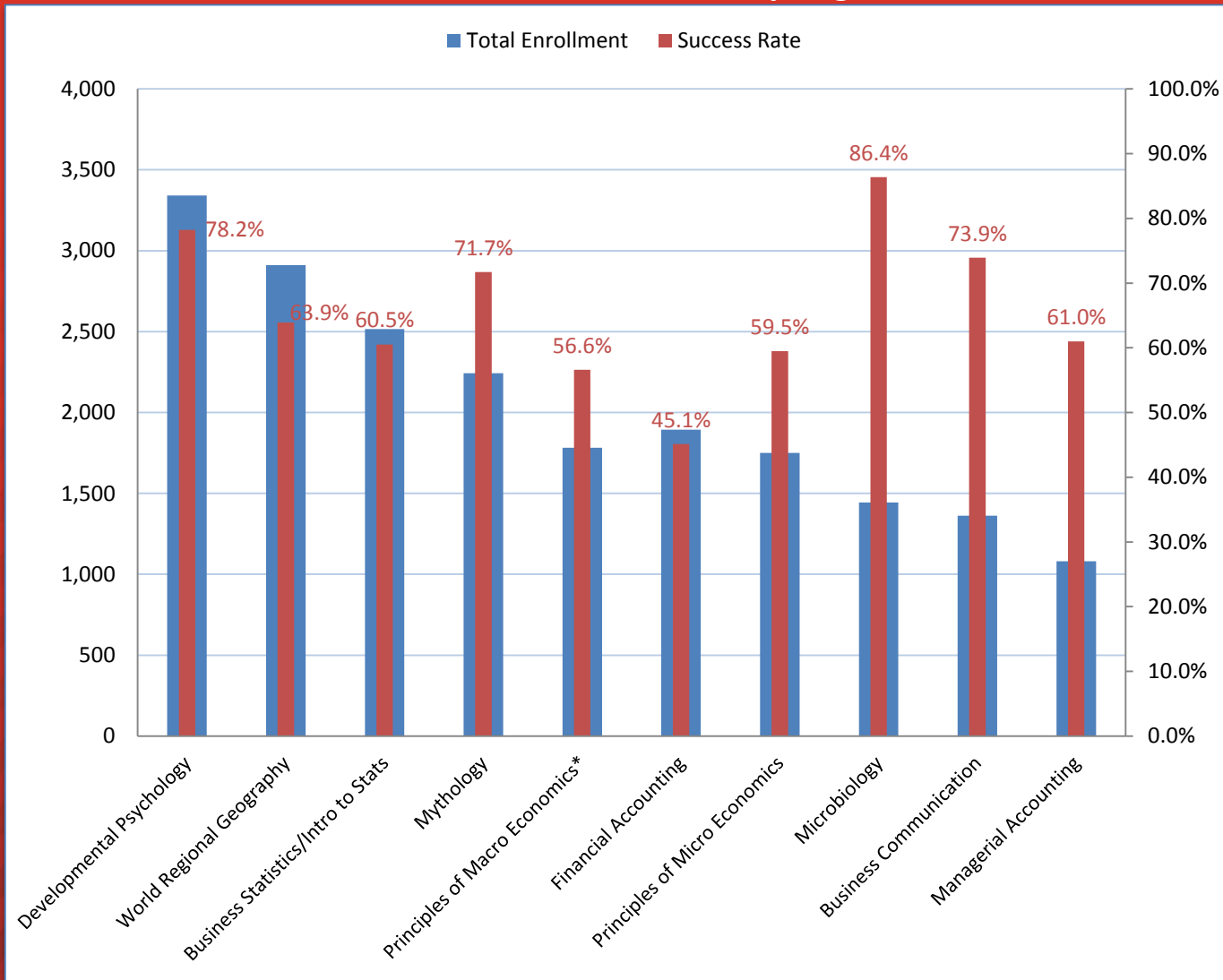
### American Federal Government – POLSC-1113

Course Success Rates - A, B, C or S



NOW IS  POWER

## 10 Largest 2000 Level Courses by Enrollments Sum of Prior 3 Fall and 3 Spring Terms



\* Includes Econ-2113 and newly revised Econ-2143 courses.

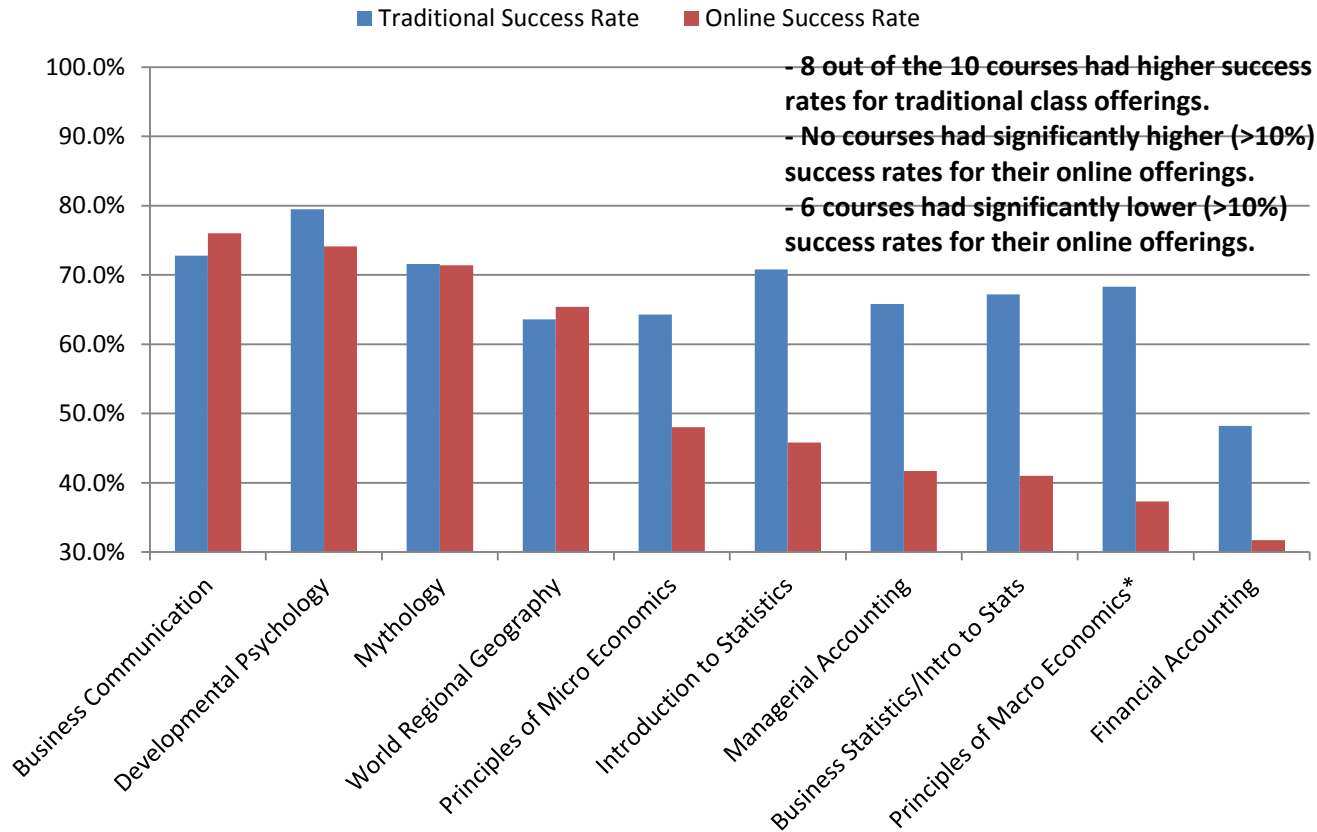


NOW IS   
POWER

# Student Success Rates – Online and Traditional Course Offerings

## Large 2000 Level Courses that Demonstrated Gaps in Success Outputs

(Success rates refer to those students who received a(n) A, B, C or S for a given course.)



- ✓ Figures represent the sum of the prior three fall and spring semesters of enrollments.
- ✓ \* Includes Econ-2113 and newly revised Econ-2143 courses.



## Seven Lowest Success Rates by Course - 2000 Level Courses

### Prerequisites Required

Course	Success Rate	Largest Negative Contributing Factor and Success Rate	Second Largest Negative Contributing Factor and Success Rate	Largest Positive Contributing Factor and Success Rate	Second Largest Positive Contributing Factor and Success Rate
General Zoology	41.9%				
Web Site Development	54.2%				
Engineering Physics I	56.0%				
Calculus and Analytical Geometry II	56.6%				
Organic Chemistry	59.5%	Morning – 54.7%		Evening – 64.1%	
Calculus and Analytical Geometry I	60.9%				
Managerial Accounting	61.0%	Online – 41.9%		Evening–67.5%	Morning–64.9%

- ✓ Only courses with a sum of enrollment greater than 200 for the prior three fall and spring terms have been included in this analysis.
- ✓ Prerequisites designation does not include any development course work requirements.



## Seven Lowest Success Rates by Course - 2000 Level Courses No Prerequisites Required

Course	Success Rate	Largest Negative Contributing Factor and Success Rate	Second Largest Negative Contributing Factor and Success Rate	Largest Positive Contributing Factor and Success Rate	Second Largest Positive Contributing Factor and Success Rate
Financial Accounting	45.1%	Online - 31.7%		Evening – 54.3%	
Intro. to Early Childhood Education	57.6%				
Principles of Info. Security	60.9%				
Principles of Management	62.4%	Morning – 46.5%		Evening – 79.0%	
World Regional Geography	63.9%				
Sociology of Religion	63.9%				
Principles of Micro Economics	64.3%	Online - 48.0%		Five Weeks – 73.9%	

- ✓ Only courses with a sum of enrollment greater than 200 for the prior three fall and spring terms have been included in this analysis.
- ✓ Prerequisites designation does not include any development course work requirements.



**NOW IS**   
**POWER**