



PRELIMINARY DESIGN PLAN
FOR THE
HEALTH PROFESSIONS CENTER
EXPANSION PROJECT

ISSUED MAY 4, 2020
UPDATED FOR JULY 20, 2020



TABLE OF CONTENTS

TAB ONE:

Project Description	Pg 3-4
Space Program	Pg 5-10
Adjacency Diagrams	Pg 11
Graphic Program	Pg 12

TAB TWO:

Existing HPC Site Plan	Pg 14
Existing HPC Floor Plans	Pg 15-16
HPC Expansion Site Plan	Pg 17
HPC Expansion Floor Plans	Pg 18-20
HPC Expansion Perspectives	Pg 21-23
HPC Expansion Elevations	Pg 24

TAB THREE:

Preliminary Cost Estimate	Pg 26
Preliminary Project Schedule	Pg 27

PROJECT CONTACT:

Cory Baitz, AIA
Senior Associate + Design Director
865 Research Parkway, Suite 100
Email: cbaitz@milesassociates.com
Phone: 405.563.6025

TAB ONE

Project Description	Pg 3-4
Space Program	Pg 5-10
Adjacency Diagrams	Pg 11
Graphic Program	Pg 12

PROJECT DESCRIPTION

INTRODUCTION

The design team, led by Miles Associates, is pleased to deliver this Building Program & Feasibility Study for the Health Professions Center (HPC) expansion at Oklahoma City Community College (OCCC). This document summarizes an 11-week programming and design effort culminating in a space program, a conceptual design, and a cost estimate for the HPC expansion. The study is the result of a collaborative programming process including contributions from OCCC administration, academic affairs, and facilities. The expansion will seamlessly augment the existing Health Professions Center, providing new, state-of-the-art facilities and increasing the center's overall capacity to provide a high-quality educational experience.

EXPANSION GOALS & PRIORITIES

One of the first efforts within the programming process is to identify the goals and priorities for the project. Doing so provides a firm foundation for the subsequent decisions to follow. Through worksessions with the design team and OCCC, the following goals and priorities for the HPC expansion have been established:

- Multi-functional, quality learning space, including large format classrooms, to expand the capacity of the existing programs offered at the Health Professions Center.
- Shared laboratory training and simulation space equipped with state-of-the-art technologies.
- New Anesthesia Technology program, including operating room simulations.
- Operational efficiency and capacity for future growth.
- Compatibility within the existing campus vernacular and a direct, uniform relationship to the existing Health Professions Center.

The OCCC Health Professions Center expansion totals approximately 47,700 GSF with an estimated construction cost of approximately \$15.5 million. The expansion is a three-story structure located on the south side of the existing Health Professions Center. Construction is anticipated to begin in the Spring of 2021 with an estimated completion in the Winter of 2022.

On the first floor, the expansion facility will include program-specific lab, simulation, and skills training space, as well as faculty office space. The building extends a corridor to the northeast and connects to the existing, original Health Professions Center building. This connection provides a continuous circulation path through the entire facility's first floor, as well as creates a defined outdoor courtyard. The second floor will be finished as 'shell space' and reserved for future growth. And lastly, the third floor will consist of shared, large-format classroom spaces. Identifying the second floor for future growth allows the greatest flexibility moving forward in providing additional lab/simulation space up from the first floor or additional classroom space down from the third floor.

PROJECT DESCRIPTION

The existing site slopes down from west to east, so much that, at the existing HPC, building access from the west occurs at the second floor and building access from the east occurs at the first floor. The new expansion will mimic the existing HPC in that the western half of the first floor will be below grade and access from the west parking lot will enter at the second floor.

The exterior of the expansion will be finished with brick, curtain wall glazing, storefront windows, seamed metal panel, and EIFS; all matching the existing exterior materials currently located on campus. The expansion will relate directly to the existing Health Professions Center creating one, uniform facility. The southwest corner of the expansion will be emphasized as a new entry point for the facility both fronting the existing parking lot to the west and potentially providing a presence to I-44 traffic.

CONCLUSION

Miles Associates, and the entire design team, are thankful for the opportunity to present this Building Program & Feasibility Study. The new Health Professions Center expansion will be a tremendous addition to an already stellar center and college. We look forward to continuing the project's development.

DESIGN TEAM



ARCHITECTURE & PROJECT MANAGEMENT
MILES ASSOCIATES



CIVIL ENGINEERING
TRIAD DESIGN GROUP



STRUCTURAL ENGINEERING
ZFI ENGINEERING



MEP ENGINEERING
ALVINE ENGINEERING



LANDSCAPE ARCHITECTURE
HOWARD-FAIRBAIRN SITE DESIGN

COST ESTIMATING
WHITE & ASSOCIATES

SPACE PROGRAM SUMMARY

(9) NURSE SIMULATIONS WITH STORAGE
(2) LAB SKILLS TRAINING WITH STORAGE
(1) ANESTHESIA SIMULATIONS CENTER
(13) FACULTY OFFICES
(1) LARGE CLASSROOM (120 PEOPLE)
(1) SHARED LAB/CLASSROOM WITH STORAGE
(1) COMPUTER LAB (50 PEOPLE)
(1) MEDIUM CLASSROOM (48 PEOPLE)
(2) HUB STUDY SPACES
RESTROOMS
LOCKER ROOMS
MECHANICAL/ELECTRICAL ROOMS
BUILDING SUPPORT/STORAGE SPACES
EXIT STAIRS/ELEVATOR
ENTRY LOBBY

SUB TOTAL: 31,800 GSF
SHELL SPACE: 15,900 GSF
TOTAL: 47,700 GSF

DEPARTMENT	EXISTING HPC ROOM		EXISTING HPC SF		ROOM WITHIN EXISTING HPC AFTER EXPANSION		SF WITHIN EXISTING HPC		NEW HPC EXPANSION	
	EXISTING HPC ROOM	EXISTING HPC SF	ROOM WITHIN EXISTING HPC AFTER EXPANSION	EXISTING HPC SF	NEW HPC ROOM	QUANTITY	SF	NEW HPC SF		
EMS	105 ADL CLASSROOM	816	105 ADL CLASSROOM	816						
EMS	119 ADL STORAGE	30	119 ADL STORAGE	30						
EMS	108 EMS CLASSROOM	1,128	108 EMS CLASSROOM	1,128						
EMS	110 EMS LAB	1,370	110 EMS LAB	1,370						
EMS	110A NURSUANCE	706	110A NURSUANCE	706						
EMS	120 ACLS LAB/STORAGE	105	120 ACLS LAB/STORAGE	105						
EMS	121 EMS STORAGE	251	121 EMS STORAGE	251						
EMS	122 EMS PEDIATRIC SIM	184	122 EMS PEDIATRIC SIM	184						
EMS	TOTAL CURRENT EMS	4,190	TOTAL PROPOSED EMS	4,190						
NURSING	146 CLASSROOM (SKILLS)	837	146 CLASSROOM (SKILLS)	837						
NURSING	147 CLASSROOM (SKILLS)	819	147 CLASSROOM (SKILLS)	819						
NURSING	167 LAB NURSING	1,213	167 LAB NURSING	1,213						
NURSING	167A LAB	402	167A LAB	402						
NURSING	167B LAB	160	167B LAB	160						
NURSING	167C W/D / SUPPLY	164	167C W/D / SUPPLY	164						
NURSING	167D LAB	268	167D LAB	268						
NURSING	167E LAB	236	167E LAB	236						
NURSING	167F LAB	227	167F LAB	227						
NURSING	167G LAB	322	167G LAB	322						
NURSING	167H LAB	54	167H LAB	54						
NURSING	167I LAB	182	167I LAB	182						
NURSING	167J LAB	177	167J LAB	177						
NURSING	167K LAB	182	167K LAB	182						
NURSING	167L LAB	281	167L LAB	281						
NURSING	167M LAB	358	167M LAB	358						
NURSING	167N LAB	398	167N LAB	398						
NURSING	SEM 1C7 LAB	1,457	111 STORAGE (FORMER HP COMP LAB)	700						
NURSING	TOTAL CURRENT NURSING	7,379	TOTAL PROPOSED NURSING	6,822						
NURSING			LAB SKILLS					2,400		
NURSING			STG @ LAB SKILLS					1,200		
NURSING			NURSE SIM					600		
NURSING			STG @ NURSE SIM					350		
NURSING								1,180		
NURSING			TOTAL PROPOSED NEW NURSING					7,930		
NURSING			TOTAL PROPOSED NURSING DEPT.					6,822		
NURSING								14,852		
NURSING								197%		
OTA	103 OTA LAB	128	103 OTA LAB	128						
OTA	104 OTA CLASSROOM	1,649	104 OTA CLASSROOM	1,649						
OTA	117 OTA KILN	205	117 OTA KILN	205						
OTA	118 OTA STG	115	118 OTA STG	115						
OTA	127 OTA WOODWORKING	354	127 OTA WOODWORKING	354						
OTA	101 PTA CLASSROOM	1,552	101 PTA CLASSROOM	1,552						
OTA	102 PTA LAB	1,427	102 PTA LAB	1,427						
OTA	124 PTA STG	272	124 PTA STG	272						
OTA	TOTAL CURRENT PTA/OTA	5,702	TOTAL PROPOSED PTA/OTA	5,702						



SPACE PROGRAM
HPC EXPANSION
JULY 20, 2020

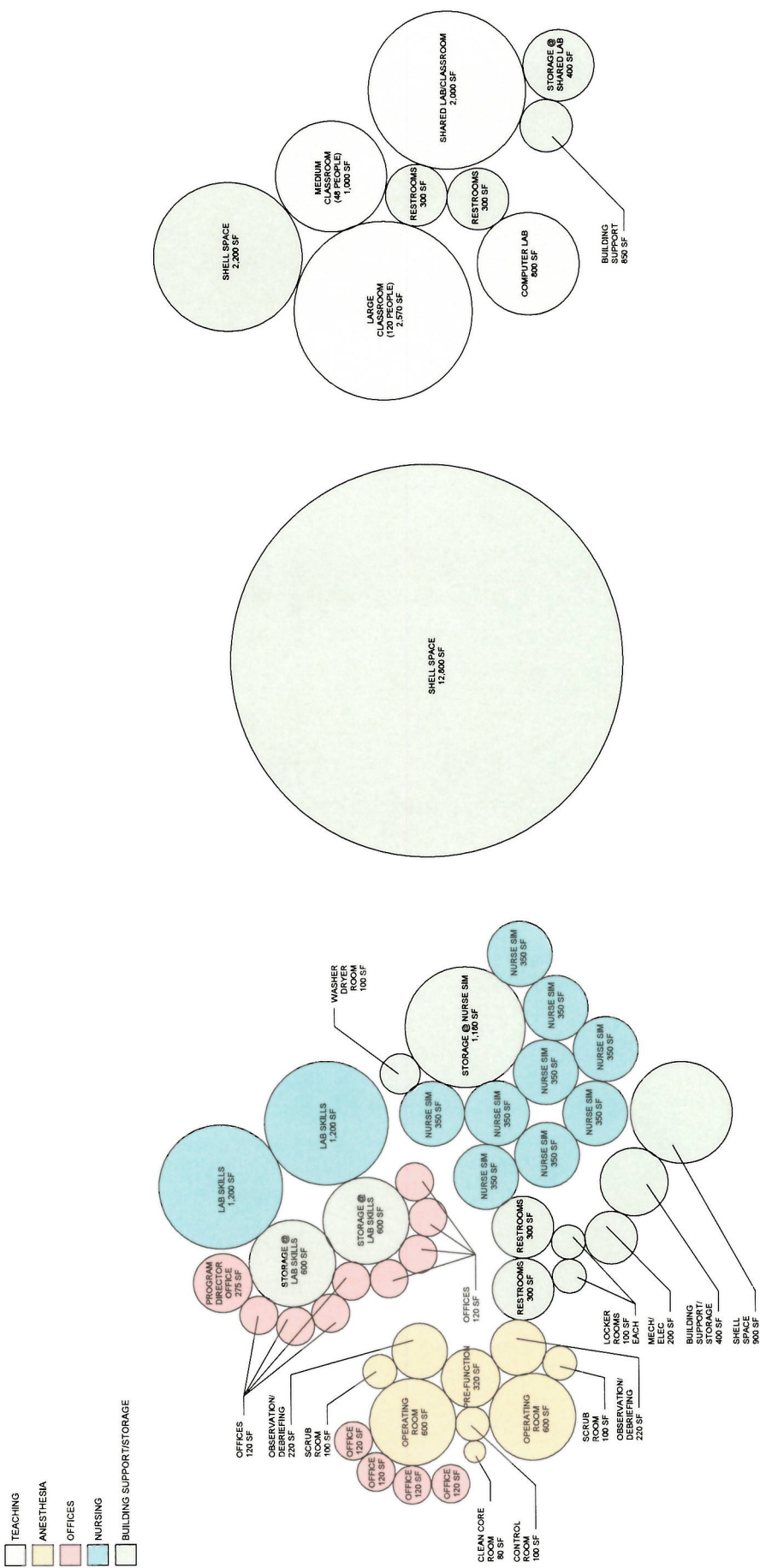


EXISTING HPC ROOM		EXISTING HPC SF	ROOM WITHIN EXISTING HPC AFTER EXPANSION	SF WITHIN EXISTING HPC	NEW HPC ROOM	QUANTITY	SF	NEW HPC SF
DEPARTMENT	EXISTING HPC ROOM	EXISTING HPC SF	ROOM WITHIN EXISTING HPC AFTER EXPANSION	SF WITHIN EXISTING HPC	NEW HPC ROOM	QUANTITY	SF	NEW HPC SF
ANESTHESIA	148A CONTROL ROOM	66		-				
ANESTHESIA	148 ANESTHESIA SIM LAB	242		-				
ANESTHESIA	TOTAL CURRENT ANESTHESIA	308		-				
ANESTHESIA					OPERATING ROOM	2	600	1,200
ANESTHESIA					CLEAN CORE ROOM	1	80	80
ANESTHESIA					CONTROL ROOM	1	100	100
ANESTHESIA					OBSERVATION/DEBRIEFING (8-10 PPL)	2	220	440
ANESTHESIA					SCRUB ROOM	2	100	200
ANESTHESIA					PRE-FUNCTION	1	320	320
ANESTHESIA					TOTAL PROPOSED NEW ANESTHESIA			2,340
TEACHING	111 HP COMPUTER LAB	779						
TEACHING	143 CLASSROOM	612	143 CLASSROOM	612				
TEACHING	144 CLASSROOM	643	144 CLASSROOM	643				
TEACHING	145 HP COMPUTER LAB	649	145 HP COMPUTER LAB	649				
TEACHING	215 CLASSROOM (120 PPL)	2,635	215 CLASSROOM (120 PPL)	2,635				
TEACHING	223 CLASSROOM (48 PPL)	862	223 CLASSROOM (48 PPL)	862				
TEACHING	224 CLASSROOM (48 PPL)	862	224 CLASSROOM (48 PPL)	862				
TEACHING	226 CLASSROOM (48 PPL)	1,002	226 CLASSROOM (48 PPL)	994				
TEACHING	SEM 1N7 CLASSROOM	1,999	226 CLASSROOM (83 PPL)	1,999				
TEACHING	SEM 1N7 CLASSROOM	1,940						
TEACHING	TOTAL CURRENT TEACHING	12,433	TOTAL PROPOSED TEACHING	8,714				
TEACHING					GENERAL CLASSROOM STORAGE	0	400	-
TEACHING					LG. NEW CLASSROOM (120PPL)	1	2,570	2,570
TEACHING					MD. NEW CLASSROOM (48PPL)	1	1,000	1,000
TEACHING					SHARED LAB/CLASSROOM SPACE	1	2,000	2,000
TEACHING					STG @ LAB SPACE	1	400	400
TEACHING					NEW COMPUTER LAB	1	800	800
TEACHING					TOTAL PROPOSED NEW TEACHING SPACE			6,770
TEACHING								8,714
TEACHING					TOTAL PROPOSED TEACHING DEPT.			15,484
TEACHING								125%

DEPARTMENT	EXISTING HPC ROOM	EXISTING HPC SF	ROOM WITHIN EXISTING HPC AFTER EXPANSION	SF WITHIN EXISTING HPC	NEW HPC EXPANSION	
					NEW HPC ROOM	NEW HPC SF
BLDG SUPPORT1107	MECH/ELEC	840	107 MECH/ELEC	840		
BLDG SUPPORT1108	TELEPHONE/DATA	80	108 TELEPHONE/DATA	80		
BLDG SUPPORT1113	WOMEN'S RESTROOM	288	113 WOMEN'S RESTROOM	288		
BLDG SUPPORT1114	MEN'S RESTROOM	286	114 MEN'S RESTROOM	286		
BLDG SUPPORT1115	ELEV. EQUIP	94	115 ELEV. EQUIP	94		
BLDG SUPPORT1116	ELEV. SHAFT	52	116 ELEV. SHAFT	52		
BLDG SUPPORT1123	WD	112	123 WD	112		
BLDG SUPPORT1128	WOMEN'S LOCKERS	105	128 WOMEN'S LOCKERS	105		
BLDG SUPPORT1128	MEN'S LOCKERS	99	128 MEN'S LOCKERS	99		
BLDG SUPPORT1128	ELECT CLOSET	26	128 ELECT CLOSET	26		
BLDG SUPPORT1137	ELECT CLOSET	16	137 ELECT CLOSET	16		
BLDG SUPPORT163A	ELEC.	67	163A ELEC.	67		
BLDG SUPPORT168	MEN'S RESTROOM	269	168 MEN'S RESTROOM	269		
BLDG SUPPORT169	WOMEN'S RESTROOM	282	169 WOMEN'S RESTROOM	282		
BLDG SUPPORT170A	ELEC.	49	170A ELEC.	49		
BLDG SUPPORT1208	CLOSET	80	208 CLOSET	80		
BLDG SUPPORT1221	FAMILY RR	53	221 FAMILY RR	53		
BLDG SUPPORT1228	CLOSET	23	228 CLOSET	23		
BLDG SUPPORT1230	ARCH. FILE STO.	424	230 ARCH. FILE STO.	424		
BLDG SUPPORT1231	WOMEN'S RESTROOM	279	231 WOMEN'S RESTROOM	279		
BLDG SUPPORT1232	ELEV. SHAFT	52	232 ELEV. SHAFT	52		
BLDG SUPPORT1233	ELECTRICAL	92	233 ELECTRICAL	92		
BLDG SUPPORT1234	MEN'S RESTROOM	292	234 MEN'S RESTROOM	292		
BLDG SUPPORT1235	WOMEN'S RESTROOM	293	235 WOMEN'S RESTROOM	293		
BLDG SUPPORT1245	CLOSET	27	245 CLOSET	27		
BLDG SUPPORT	TOTAL CURRENT BLDG SUPPORT	4,275	TOTAL PROPOSED BLDG SUPPORT	4,275		
BLDG SUPPORT	MECH/ELEC					
BLDG SUPPORT	TELEPHONE/DATA					
BLDG SUPPORT	WOMEN'S RESTROOM					
BLDG SUPPORT	MEN'S RESTROOM					
BLDG SUPPORT	ELEV. EQUIP					
BLDG SUPPORT	ELEV. SHAFT					
BLDG SUPPORT	WOMEN'S LOCKERS					
BLDG SUPPORT	MEN'S LOCKERS					
BLDG SUPPORT	CLOSET					
BLDG SUPPORT	ELECT. CLOSET					
BLDG SUPPORT	VESTIBULE					
BLDG SUPPORT	FAMILY RR					
BLDG SUPPORT	ARCH. FILE STG.					
BLDG SUPPORT	W/D ROOM					
	TOTAL PROPOSED BLDG SUPPORT					2,600



EXISTING		NEW HPC EXPANSION	
EXISTING HPC ROOM	EXISTING HPC SF	NEW HPC ROOM	NEW HPC SF
CIRCULATION	194	106 STAIRS	194
CIRCULATION	154	129 STAIRS	154
CIRCULATION	710	131 CORR.	710
CIRCULATION	94	132A CORR.	94
CIRCULATION	758	133 CORR.	758
CIRCULATION	340	134 CORR.	340
CIRCULATION	279	135 CORR.	279
CIRCULATION	126	138 VESTIBULE	126
CIRCULATION	71	140 CORR.	71
CIRCULATION	91	141 CORR.	91
CIRCULATION	1,531	166 CORR.	1,531
CIRCULATION	189	167O CORR.	189
CIRCULATION	49	167P CORR.	49
CIRCULATION	91	167Q CORR.	91
CIRCULATION	817	170 CORR.	817
CIRCULATION	319	171A CORR.	319
CIRCULATION	460	171B CORR.	460
CIRCULATION	213	220 STAIRS	213
CIRCULATION	260	229 STAIRS	260
CIRCULATION	136	237 VESTIBULE	136
CIRCULATION	392	238 VESTIBULE	392
CIRCULATION	179	239 STAIRS	179
CIRCULATION	265	242 CORR.	265
CIRCULATION	1,097	243 CORR.	1,097
CIRCULATION	400	244 CORR.	400
TOTAL CURRENT CIRCULATION	9,215	TOTAL PROPOSED CIRCULATION	9,215
CIRCULATION		CORRIDORS	
CIRCULATION		STAIRS	
TOTAL CURRENT HPC NET SF	57,428	TOTAL PROPOSED NEW CIRCULATION	5,400
		TOTAL PROPOSED HPC NET SF	26,755
		GROSSING FACTOR 15.8%	5,045
		SUBTOTAL PROPOSED HPC GROSS SF	31,800
		SHELL SPACE NET SF	15,900
		TOTAL PROPOSED HPC GROSS SF	47,700



FIRST FLOOR
13,585 NET SF
900 NET SF SHELL SPACE
19,900 GROSS SF

SECOND FLOOR
12,800 NET SF SHELL SPACE
13,900 GROSS SF

THIRD FLOOR
8,220 NET SF
2,200 NET SF SHELL SPACE
13,900 GROSS SF

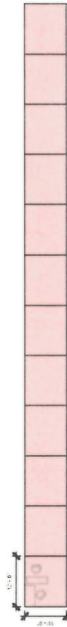


ADJACENCY DIAGRAM
HPC EXPANSION
JULY 20, 2020



OFFICES

(12) FACULTY OFFICES
120 SF EACH

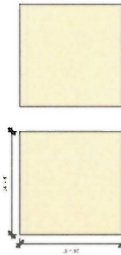


(1) PROGRAM DIRECTOR OFFICE
275 SF

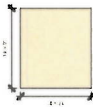


ANESTHESIA

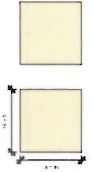
(2) OPERATING ROOMS
600 SF EACH



PRE-FUNCTION ROOMS
320 SF



(2) OBSERVATION ROOMS
220 SF EACH



(2) SCRUB ROOMS
100 SF EACH



CONTROL ROOM
100 SF

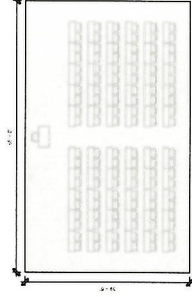


CLEAN CORE ROOM
80 SF

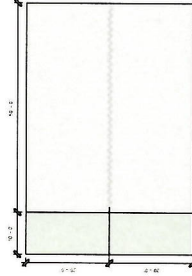


TEACHING

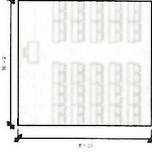
(1) LARGE CLASSROOM
(120 PEOPLE)



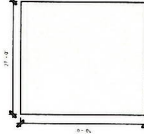
(1) SHARED LAB/CLASS WITH STORAGE - 2400 SF



(1) MEDIUM CLASSROOM
(48 PEOPLE)
1000 SF

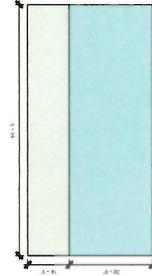


(1) COMPUTER LAB
800 SF

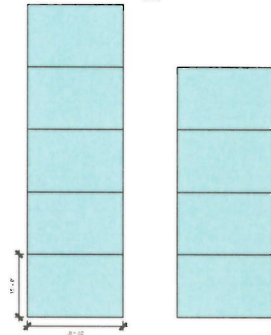


NURSING

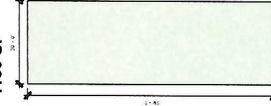
(2) SKILLS LABS WITH STORAGE - 1800 SF



(9) NURSE SIMULATIONS
350 SF EACH



(1) STORAGE @ NURSING SIMULATION
1180 SF

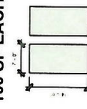


BUILDING SUPPORT

(6) RESTROOMS
2 PER FLOOR
300 SF EACH



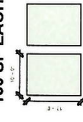
(2) LOCKER ROOMS
100 SF EACH



(2) IT CLOSETS
1 PER FLOOR
50 SF EACH



(2) MECH/ELEC
1 PER FLOOR
130 SF EACH



(1) WASHER/ DRYER ROOM
100 SF



NOTE: FURNITURE IS REPRESENTATIVE.

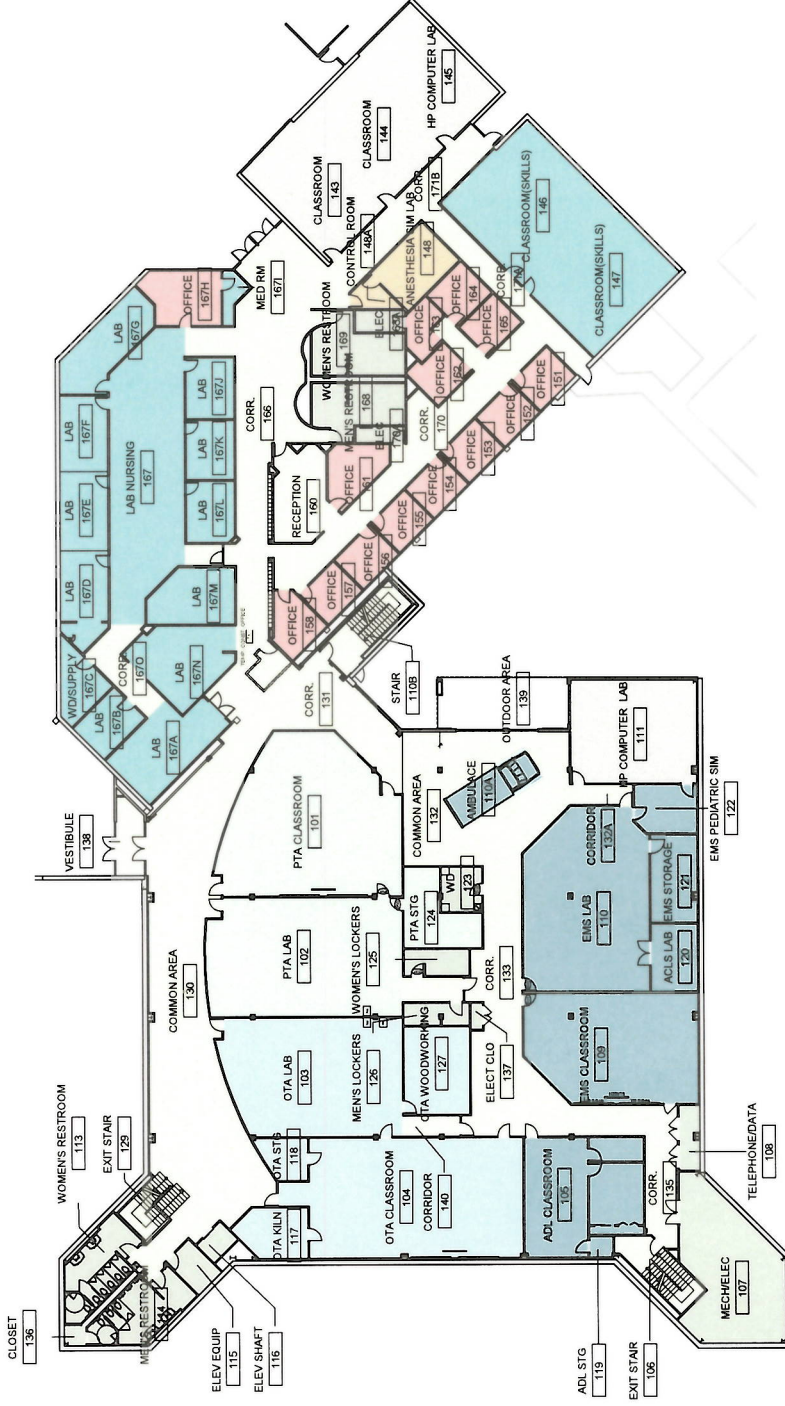


TAB TWO

Existing HPC Site Plan	Pg 14
Existing HPC Floor Plans	Pg 15-16
HPC Expansion Site Plan	Pg 17
HPC Expansion Floor Plans	Pg 18-20
HPC Expansion Perspectives	Pg 21-23
HPC Expansion Elevations	Pg 24



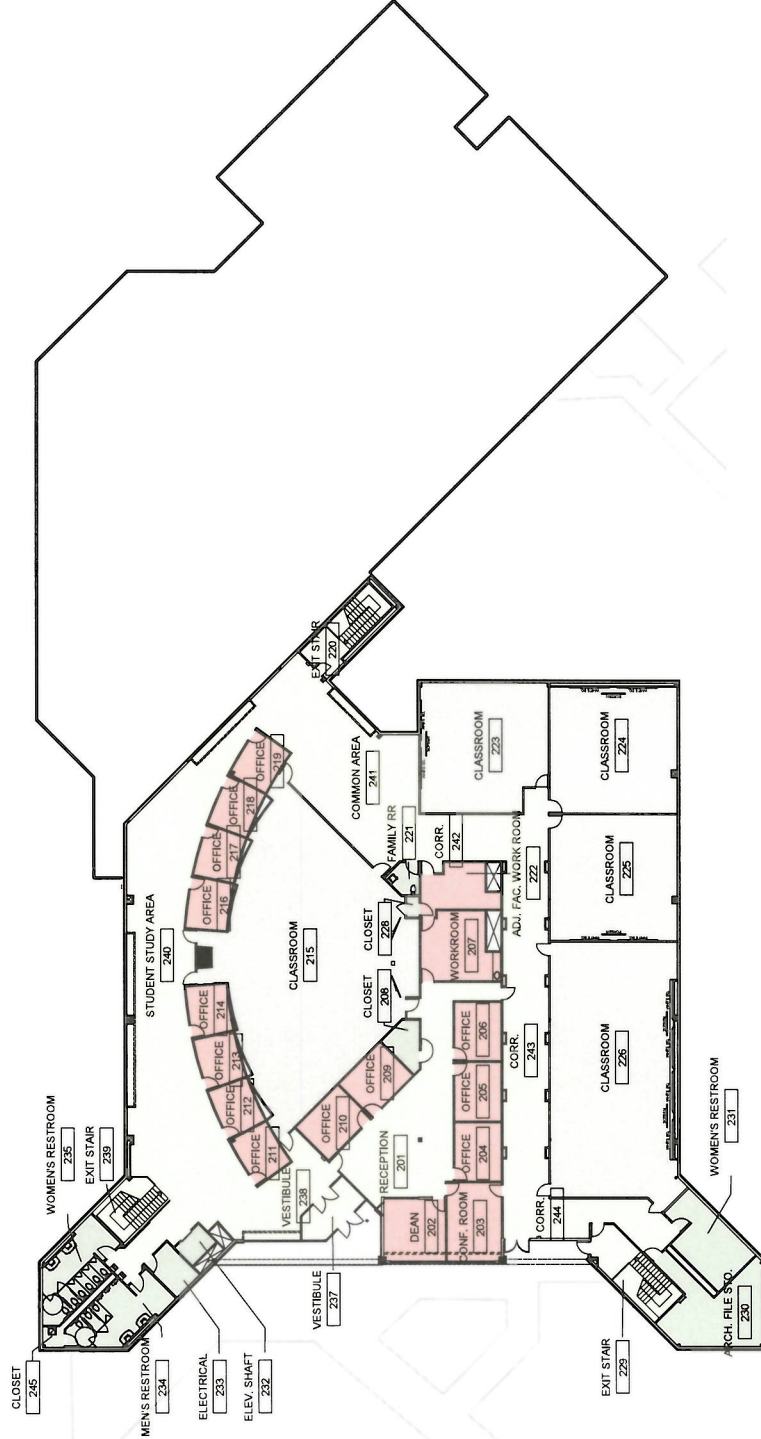
- TEACHING
- ANESTHESIA
- OFFICES
- NURSING
- BUILDING SUPPORT/STORAGE

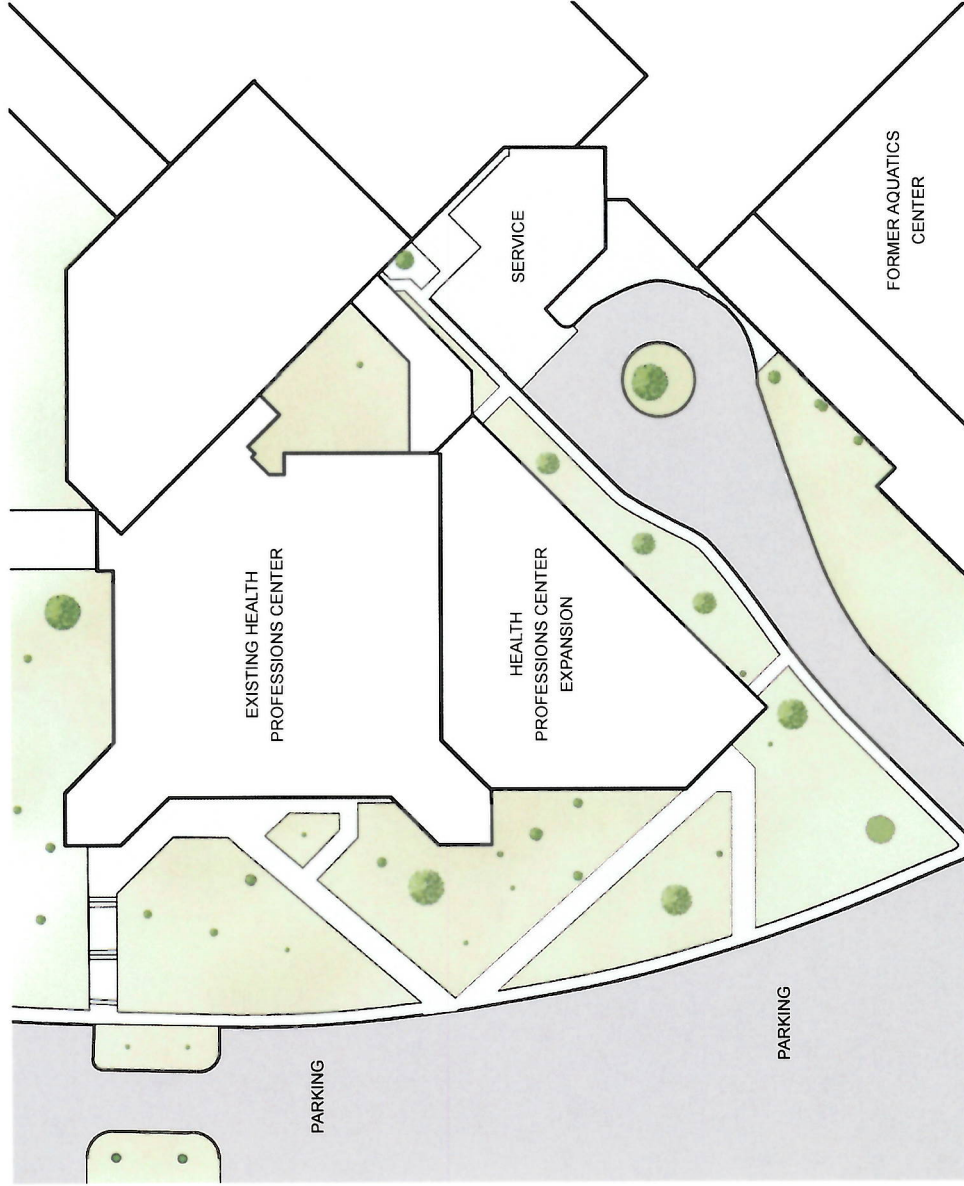


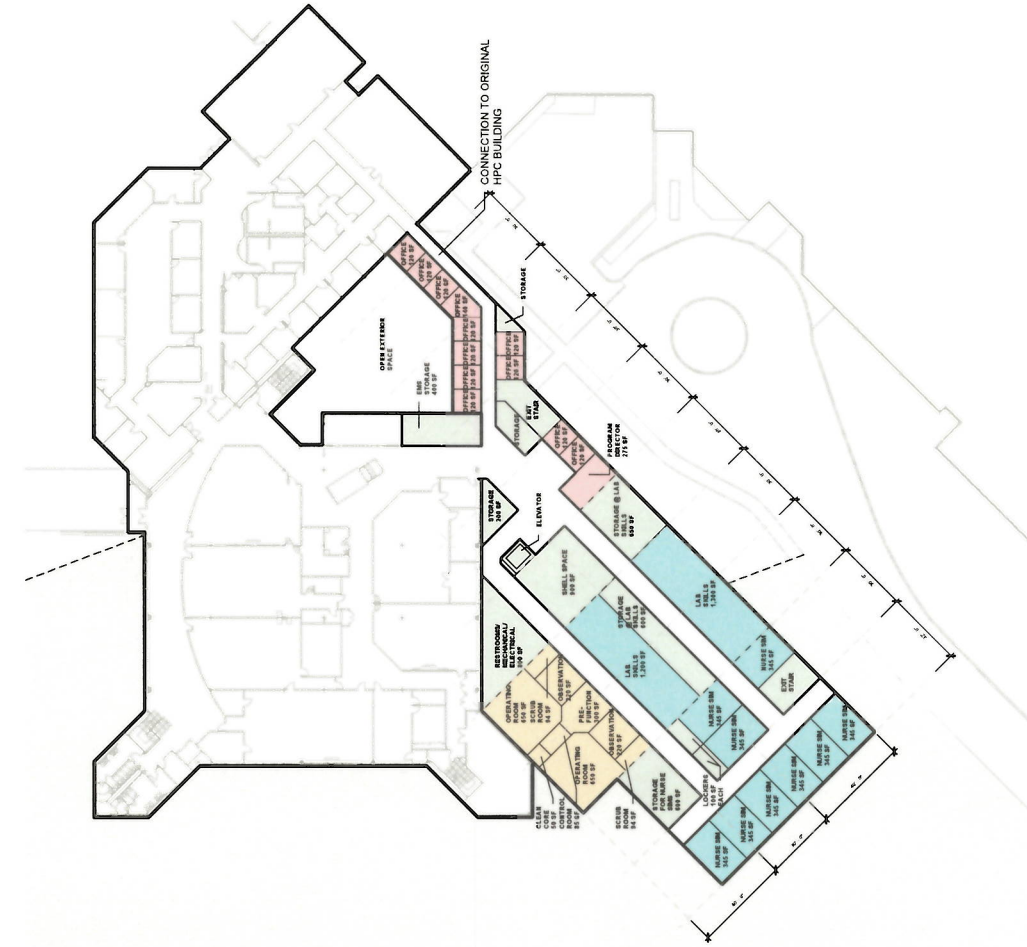
EXISTING HEALTH PROFESSIONS CENTER
FIRST FLOOR PLAN
JULY 20, 2020

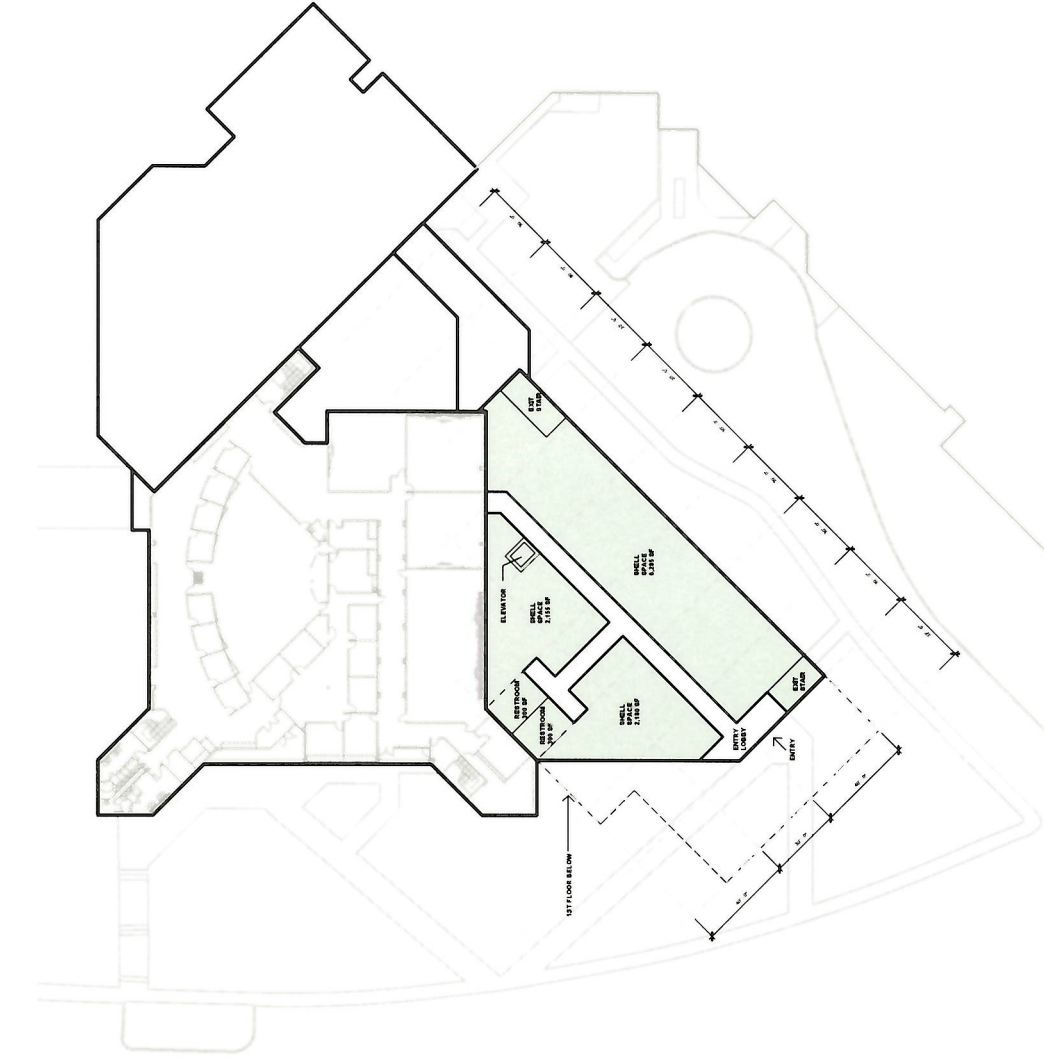


- TEACHING
- ANESTHESIA
- OFFICES
- NURSING
- BUILDING SUPPORT/STORAGE







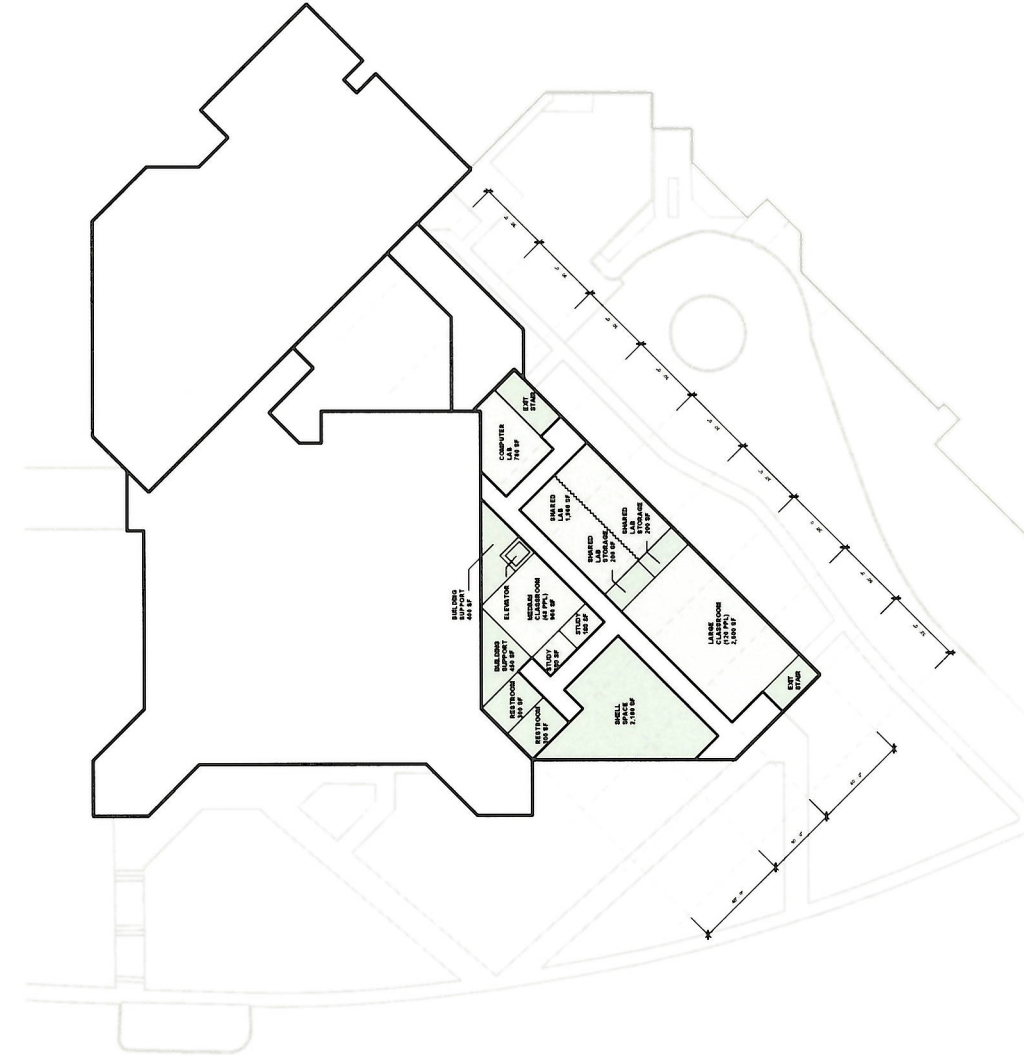


- TEACHING
- ANESTHESIA
- OFFICES
- NURSING
- BUILDING SUPPORT/STORAGE

PROPOSED FLOOR PLAN

1ST FLOOR: 19,900 GSF
 2ND FLOOR: 13,900 GSF
 3RD FLOOR: 13,900 GSF
TOTAL: 47,700 GSF (ESTIMATE)





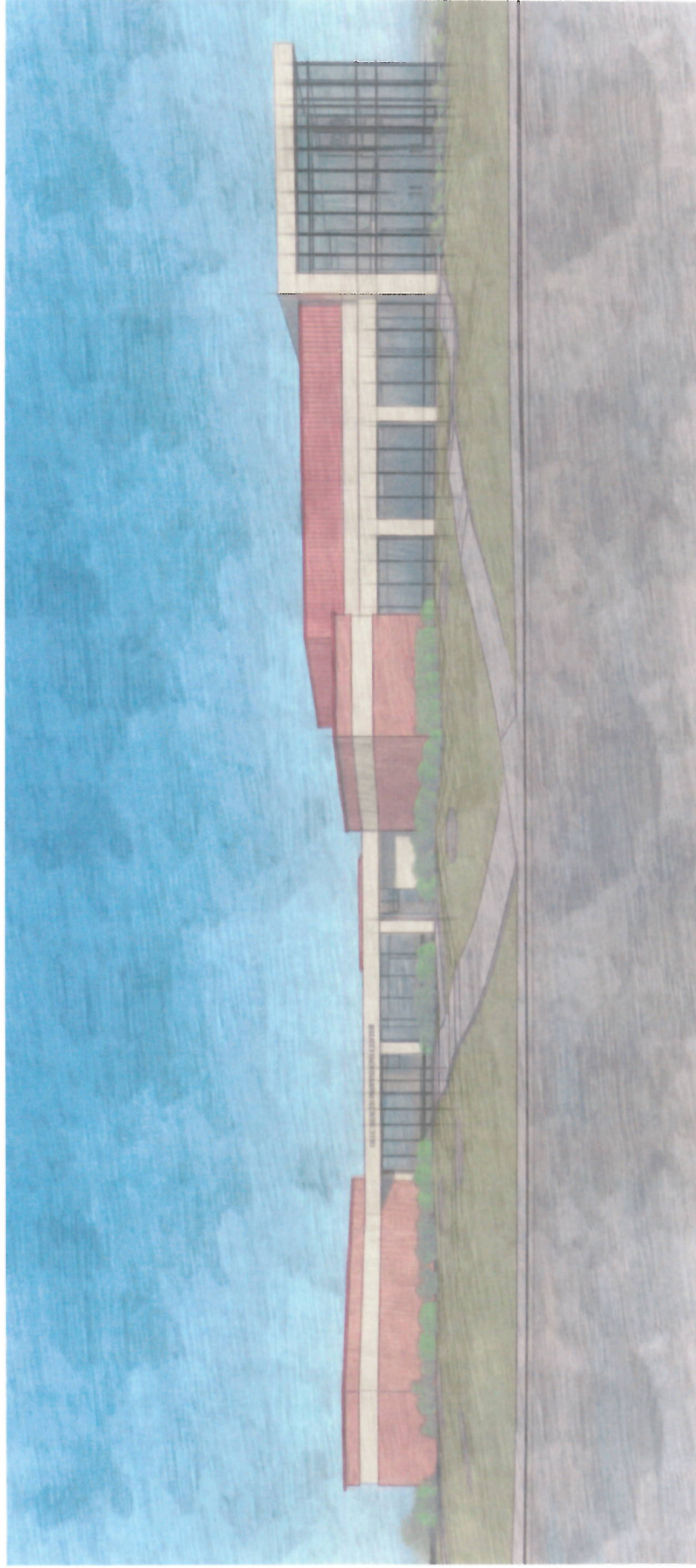
- TEACHING
- ANESTHESIA
- OFFICES
- NURSING
- BUILDING SUPPORT/STORAGE

PROPOSED FLOOR PLAN

1ST FLOOR:	19,900 GSF
2ND FLOOR:	13,900 GSF
3RD FLOOR:	13,900 GSF
TOTAL:	47,700 GSF (ESTIMATE)



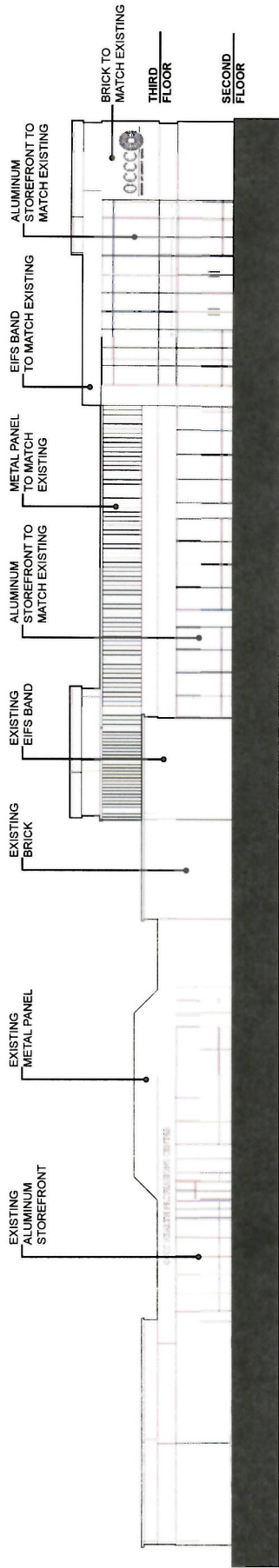




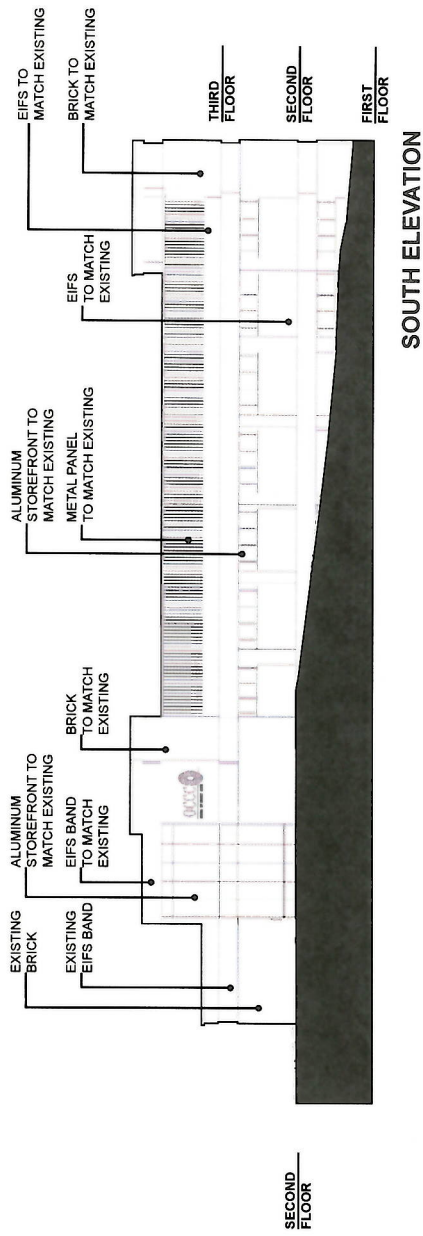


OCCC
OKLAHOMA CITY COMMUNITY COLLEGE
HEALTH PROFESSIONS CENTER

ELEVATOR	ROOM 101
RESTROOMS	ROOM 102
COUNSEL	ROOM 103
STAIRS	ROOM 104
MAIN BUILDING	ROOM 105



WEST ELEVATION



SOUTH ELEVATION

TAB THREE

Preliminary Cost Estimate
Preliminary Project Schedule

Pg 26
Pg 27

PRELIMINARY COST ESTIMATE SUMMARY

BASE BID - CORE AND SHELL

CONSTRUCTION	\$8,575,933
BONDING 1%	\$85,759
CONTRACTOR FEE 7%	\$600,315
INSURANCE 1%	\$85,759
BUILDERS RISK INSURANCE 0.3%	\$25,728
SUBTOTAL	\$9,373,495

CONSTRUCTION TESTING 0.5%	\$46,867
CONTINGENCY 10%	\$937,349
ESCALATION 1.5%	\$140,602
TOTAL BASE BID - CORE AND SHELL	\$10,498,314

ALTERNATE ONE - FIRST FLOOR BUILD-OUT

CONSTRUCTION	\$2,508,950
BONDING 1%	\$25,090
CONTRACTOR FEE 7%	\$175,627
INSURANCE 1%	\$25,090
BUILDERS RISK INSURANCE 0.3%	\$7,527
SUBTOTAL	\$2,742,282

CONSTRUCTION TESTING 0.5%	\$13,711
CONTINGENCY 10%	\$274,228
ESCALATION 1.5%	\$41,134
TOTAL ALTERNATE ONE - FIRST FLOOR BUILD-OUT	\$3,071,356

ALTERNATE TWO - THIRD FLOOR BUILD-OUT

CONSTRUCTION	\$1,576,300
BONDING 1%	\$15,763
CONTRACTOR FEE 7%	\$110,341
INSURANCE 1%	\$15,763
BUILDERS RISK INSURANCE 0.3%	\$4,729
SUBTOTAL	\$1,722,896

CONSTRUCTION TESTING 0.5%	\$8,614
CONTINGENCY 10%	\$172,289
ESCALATION 1.5%	\$25,843
TOTAL ALTERNATE TWO - THIRD FLOOR BUILD-OUT	\$1,929,643

TOTAL BUILDING CONSTRUCTION	\$15,499,314	EST. SF	EST. COST/SF
		47,700 SF	\$325



PRELIMINARY PROJECT SCHEDULE

BUILDING PROGRAM & FEASIBILITY STUDY

7/20/20 **JULY BOARD MEETING**
(PROJECT APPROVAL, AUTHORIZATION TO BEGIN DESIGN & ENGINEERING)

DESIGN DEVELOPMENT & CONSTRUCTION DOCUMENTS

8/3/20 START ARCHITECTURAL DESIGN & ENGINEERING [7 MONTHS]

2/22/21 FINAL DESIGN & COST ESTIMATE SUBMISSION FOR NEXT BOARD MEETING
ISSUE DRAWINGS & SPECIFICATIONS SUITABLE FOR BIDDING AND PERMITTING

4/19/21 **APRIL BOARD MEETING**
(DESIGN & COST ESTIMATE APPROVAL, AUTHORIZATION TO SOLICIT BIDS FOR
CONSTRUCTION)

BIDDING

4/26/21 ADVERTISE DRAWINGS & SPECIFICATIONS [2 MONTHS]
COLLECT & REVIEW BIDS
IDENTIFY LOWEST RESPONSIBLE BIDDER

6/28/21 FINAL DESIGN & LOWEST RESPONSIBLE CONSTRUCTION BID SUBMISSION FOR
NEXT BOARD MEETING

8/16/21 **AUGUST BOARD MEETING**
(FINAL DESIGN AND BID APPROVAL, AUTHORIZATION TO AWARD
CONSTRUCTION CONTRACT)

8/23/21 AWARD CONSTRUCTION CONTRACT

CONSTRUCTION

9/6/21 MOBILIZE & START CONSTRUCTION [18 MONTHS]

3/1/22 **COMPLETE CONSTRUCTION**

Special Meeting of the
SOUTH OKLAHOMA CIY AREA SCHOOL DISTRICT BOARD OF TRUSTEES
July 20, 2020

AGENDA ITEM 5:

Approval of the Preliminary Design Plan for the Health Professions Center Expansion Project

RECOMMENDATION:

It is recommended that the Board of Trustees approve the Preliminary Design Plan for the Health Professions Center Expansion Project.

ANALYSIS:

- The current Health Professions Center will be expanded to provide additional programming capacity.
- Miles Associates met with the Administration for input on the College's requirements throughout the preliminary design process.
- The Administration has reviewed the preliminary design plan renderings and construction cost estimate for the Health Professions Center Expansion Project.
- The preliminary design plan, renderings, and cost estimate for the Health Professions Center Expansion Project were reviewed by two members of the Board Facilities Committee on June 9, 2020 and by the third member on June 12, 2020.
- Trustees were provided the opportunity to tour the Health Professions facilities to assess the current and future needs of the Division of Health Professions.

RECOMMEND



RECOMMEND



CONCUR

