



SCL 1001 Demographics

Fall 2011

89 sections

- ❖ 62 on-campus sections
- ❖ 27 online sections

Instructor:

- ❖ 28% taught by full-time faculty
- ❖ 51% taught by full-time staff
- ❖ 21% taught by adjunct faculty

Spring 2012

54 sections

- ❖ 31 on campus sections
- ❖ 23 online sections

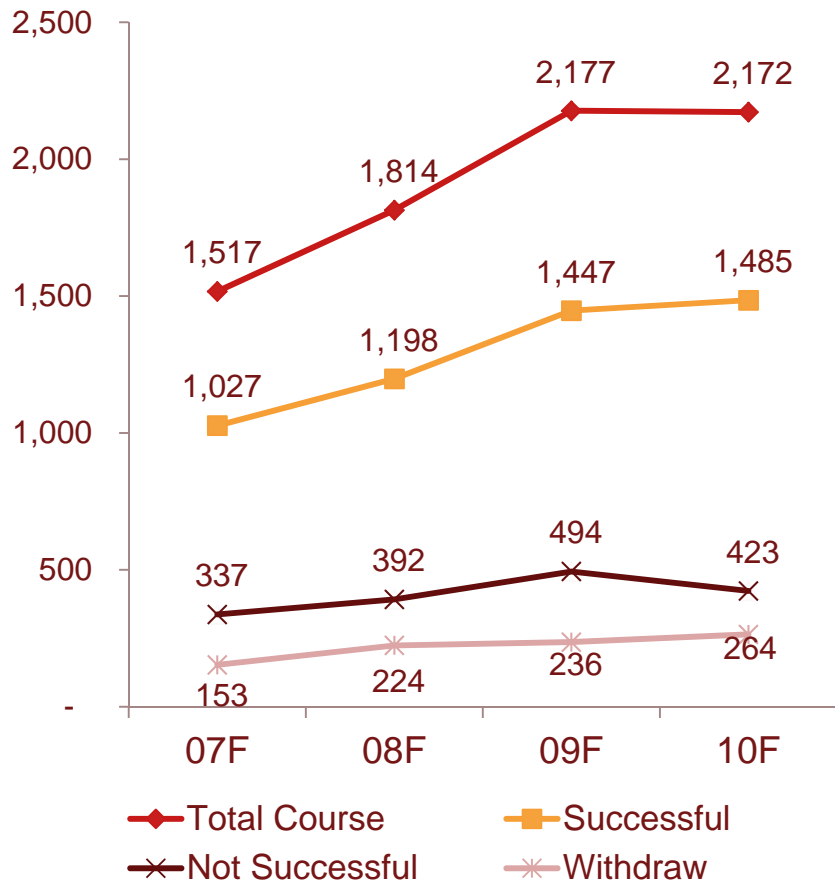
Instructor:

- ❖ 33% taught by full-time faculty
- ❖ 44% taught by full-time staff
- ❖ 23% taught by adjunct faculty

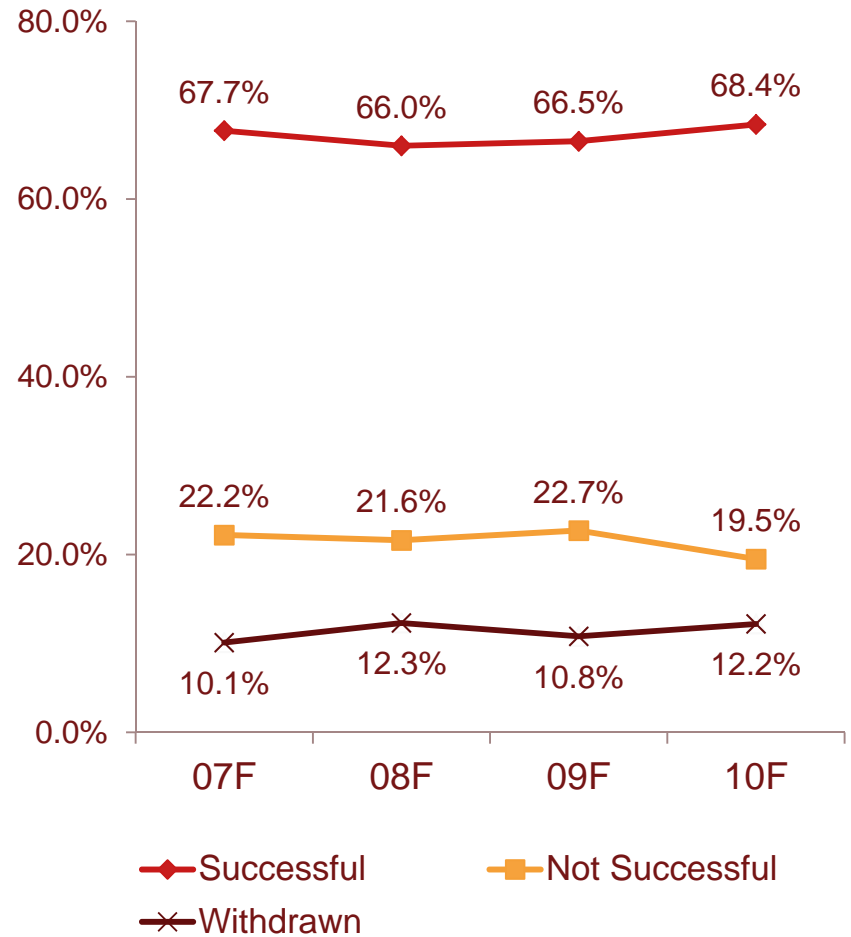


SCL 1001 ENROLLMENTS And SUCCESS RATES FALL

SCL 1001 Enrollments Fall



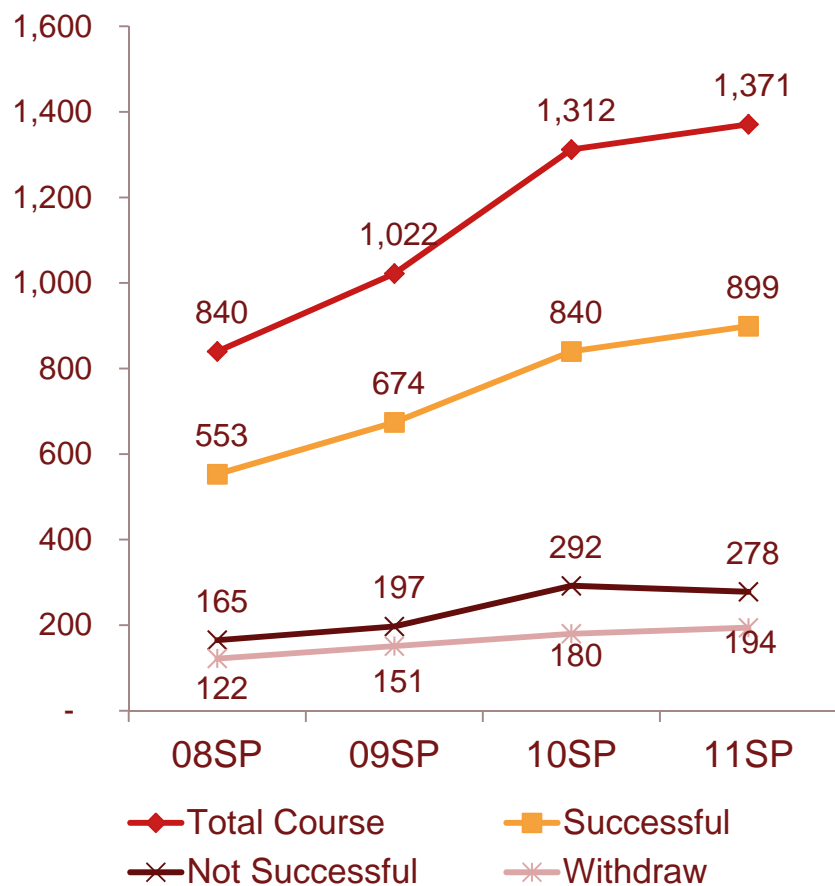
SCL 1001 Student Success Fall



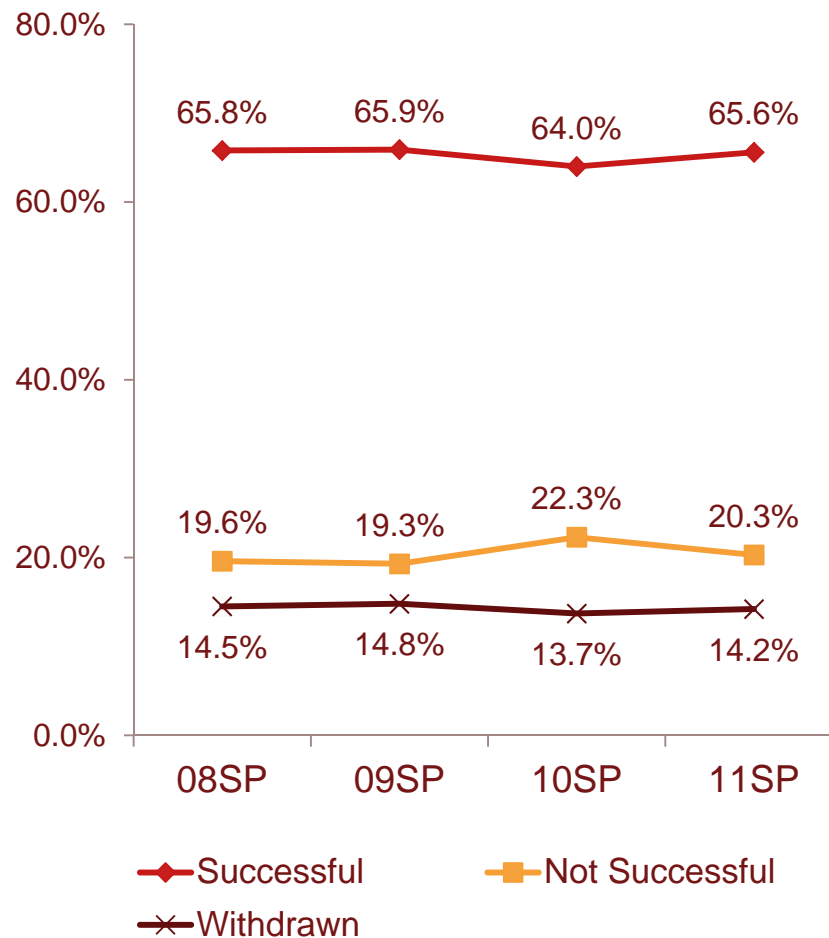


SCL 1001 ENROLLMENTS And SUCCESS RATES SPRING

SCL 1001 Enrollments Spring

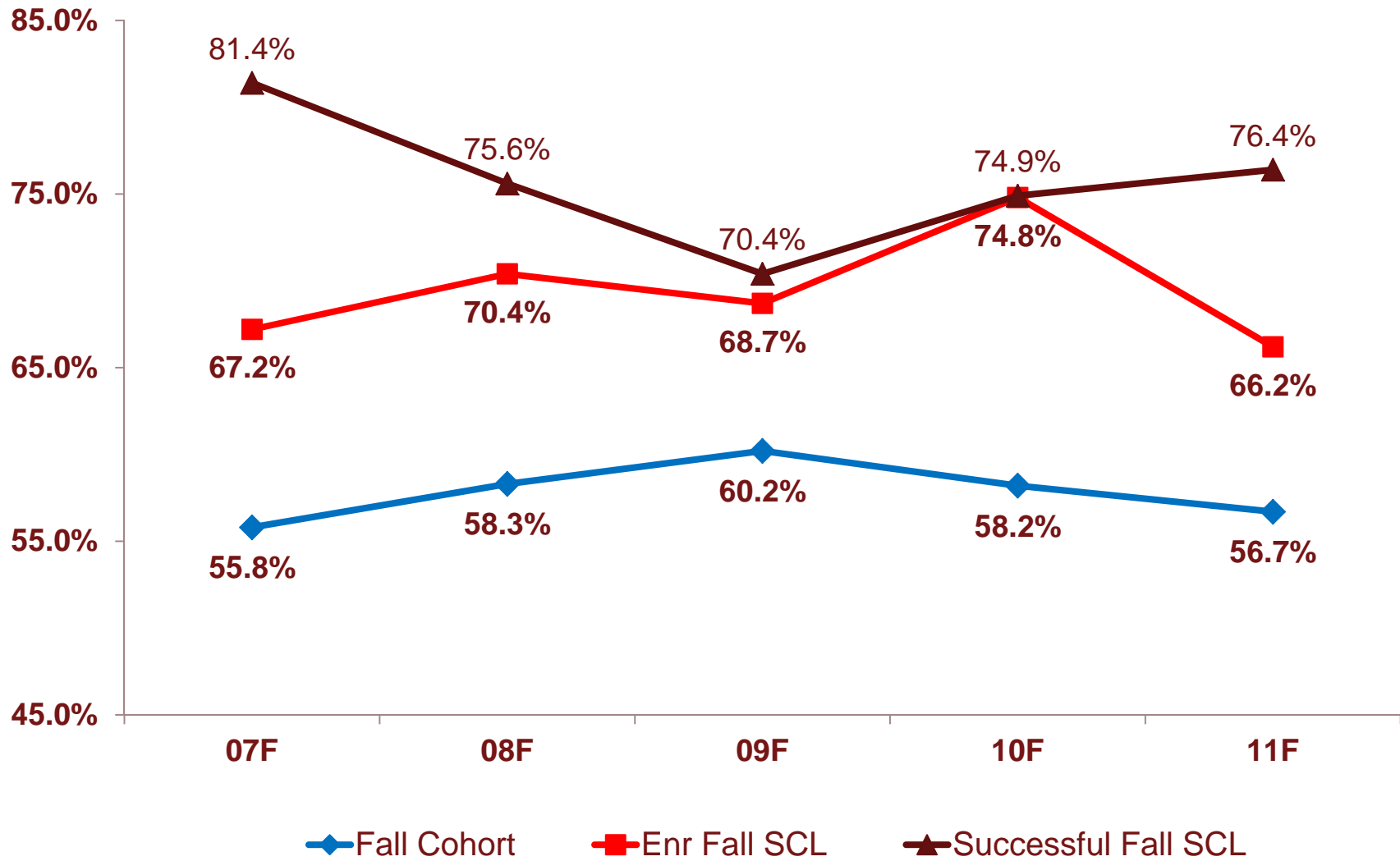


SCL 1001 Student Success Spring





AtD Fall 2011 Cohort Persistence





SCL 1003 Demographics

Fall 2011

10 sections

- ❖ All on campus

Instructor:

- ❖ 60% taught by full-time faculty
- ❖ 40% taught by adjunct faculty

Spring 2012

9 sections

- ❖ All on campus

Instructor:

- ❖ 56% taught by full-time faculty
- ❖ 44% taught by adjunct faculty

104 sections of SCL

❖ 93 sections of SCL-1001

❖ 11 sections of SCL-1003

Curriculum Review

❖ Moodle

- Model Courses for 1001 and 1003
- Instructor Resources

❖ New Textbook for SCL-1001